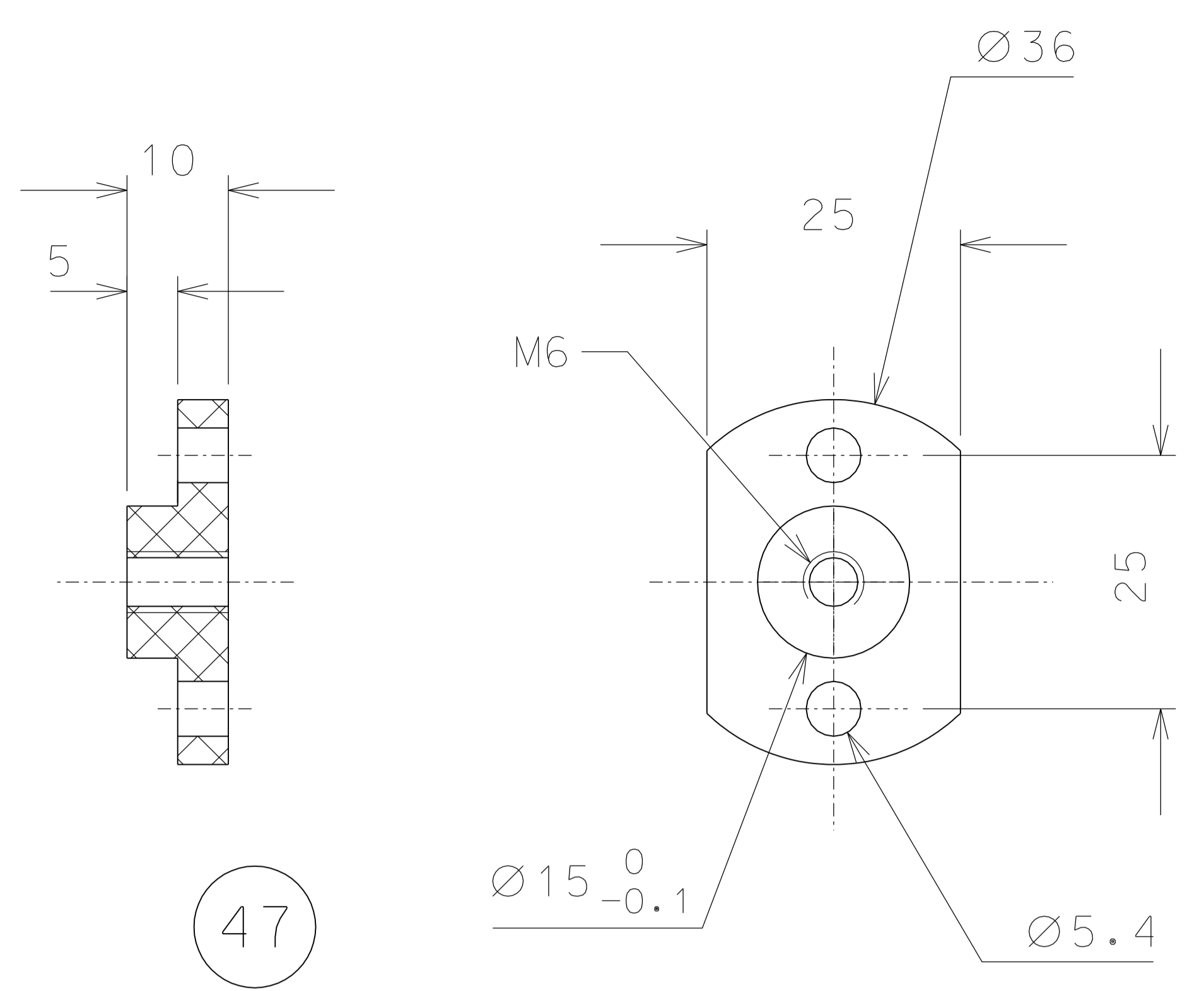
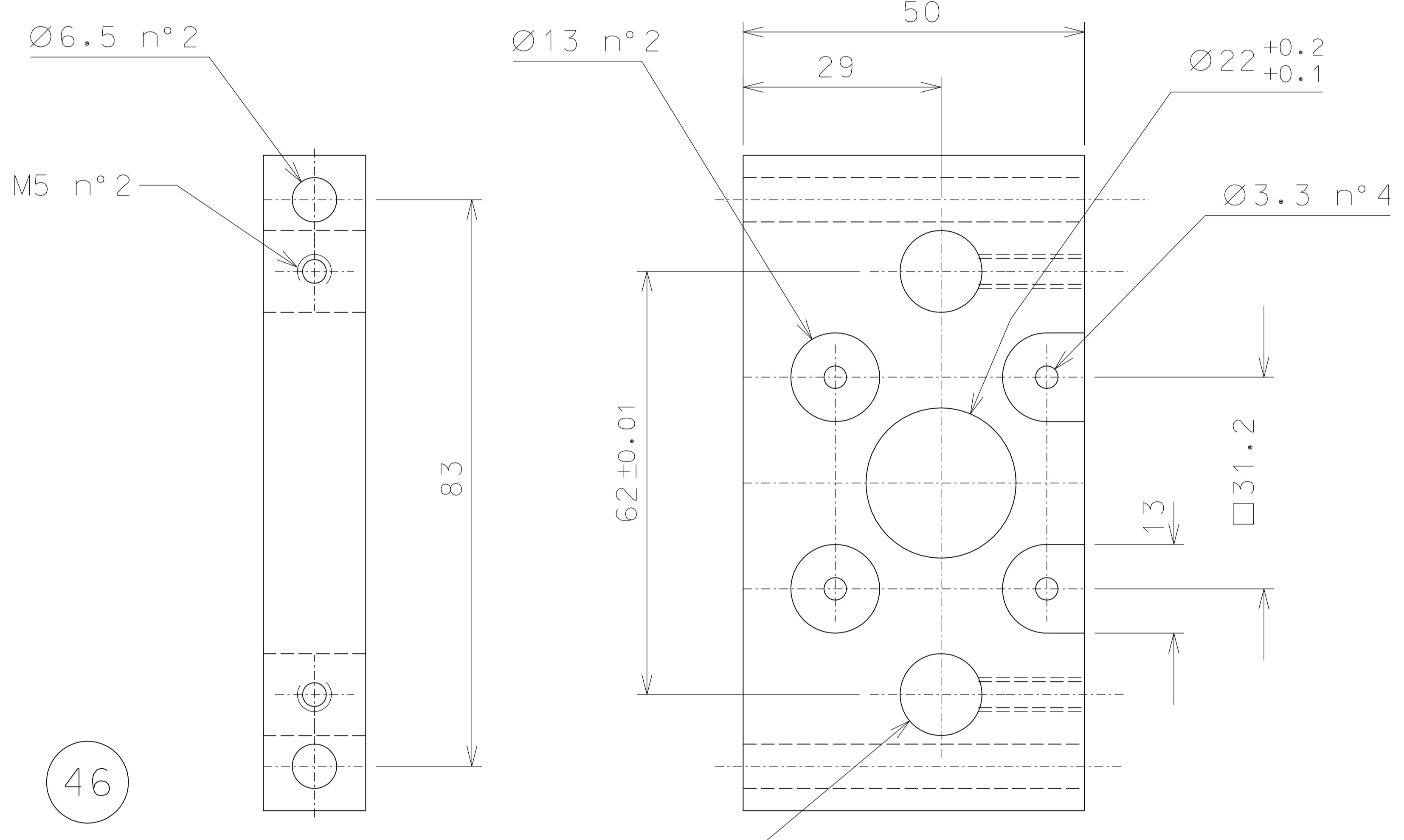


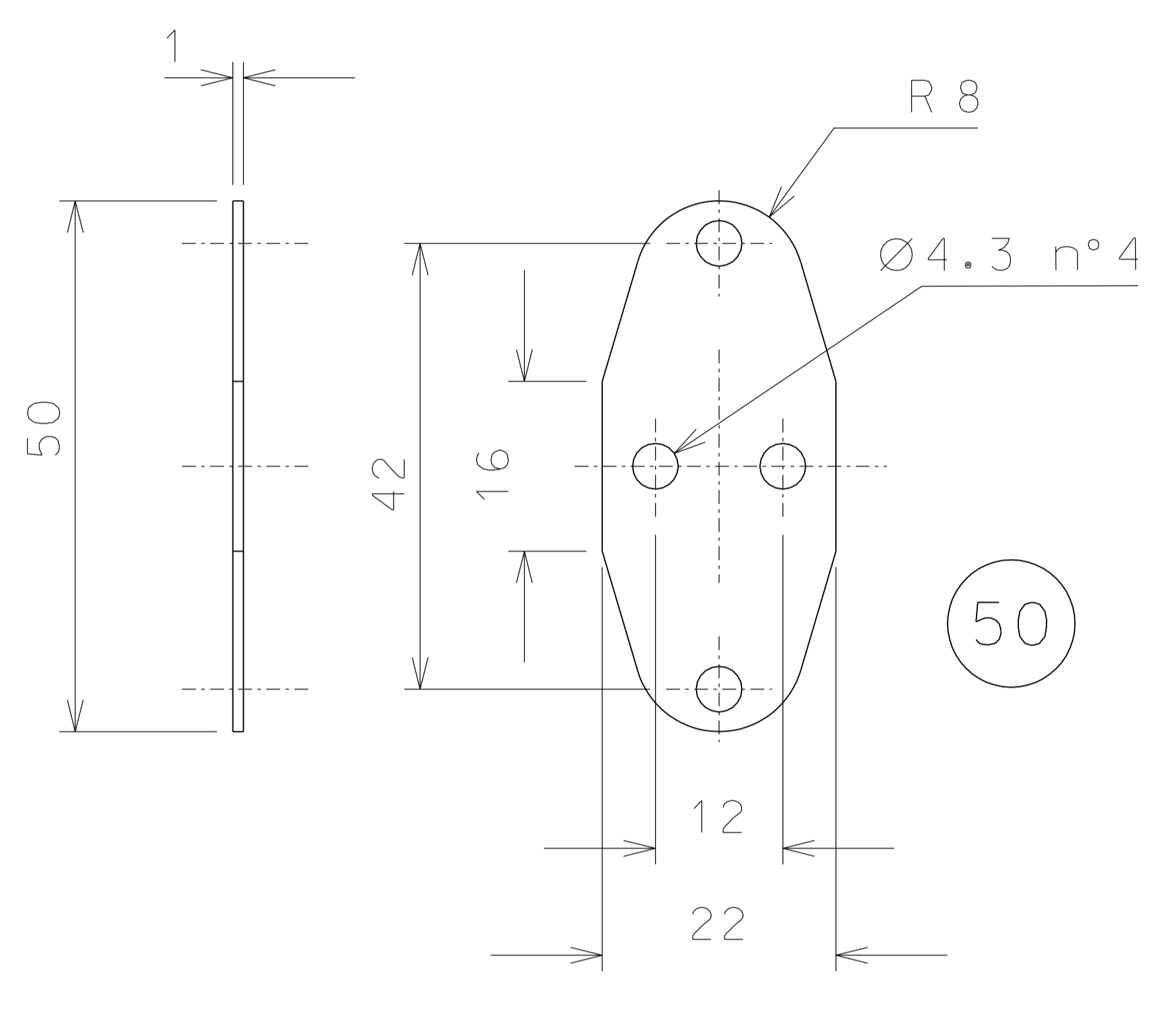
42



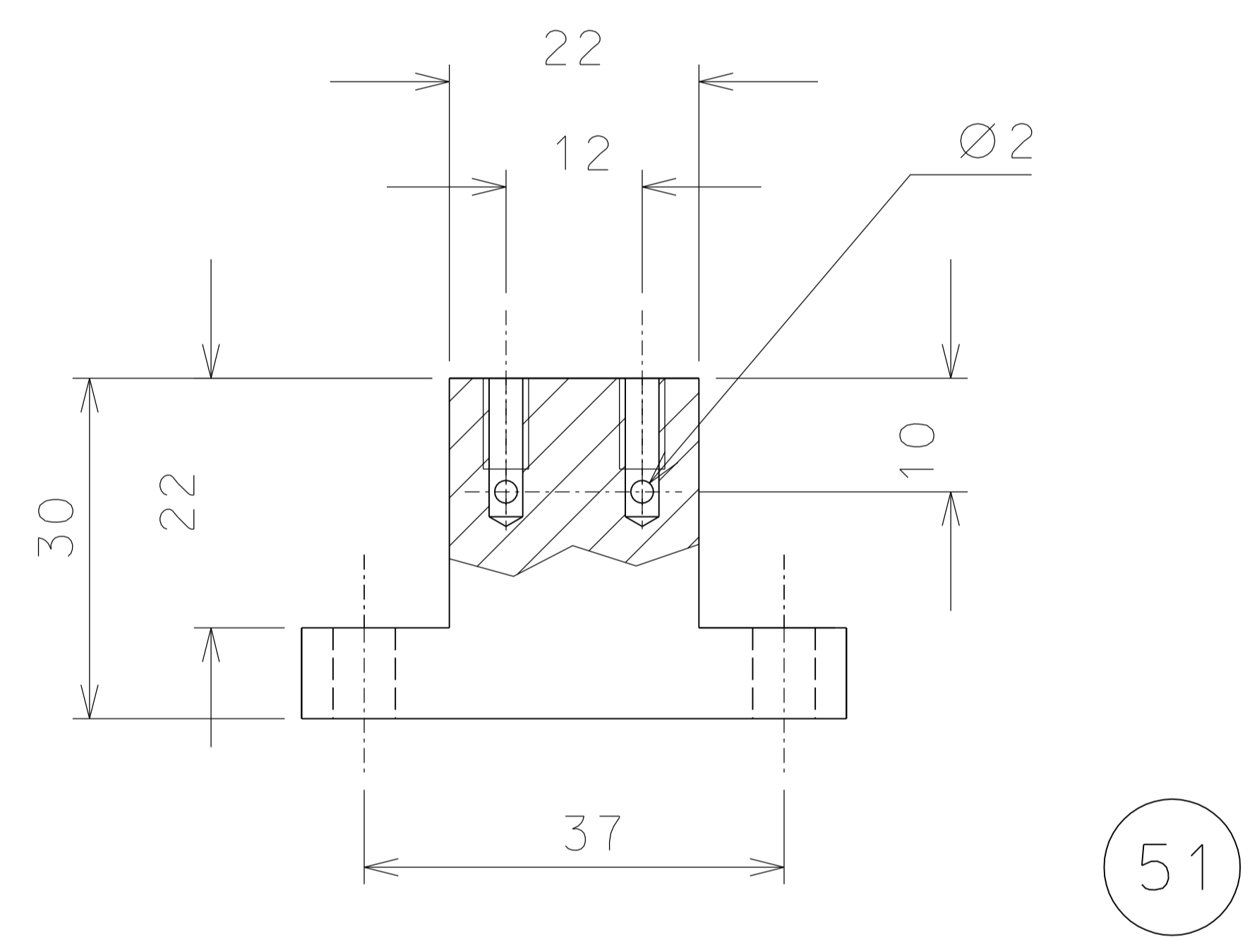
47



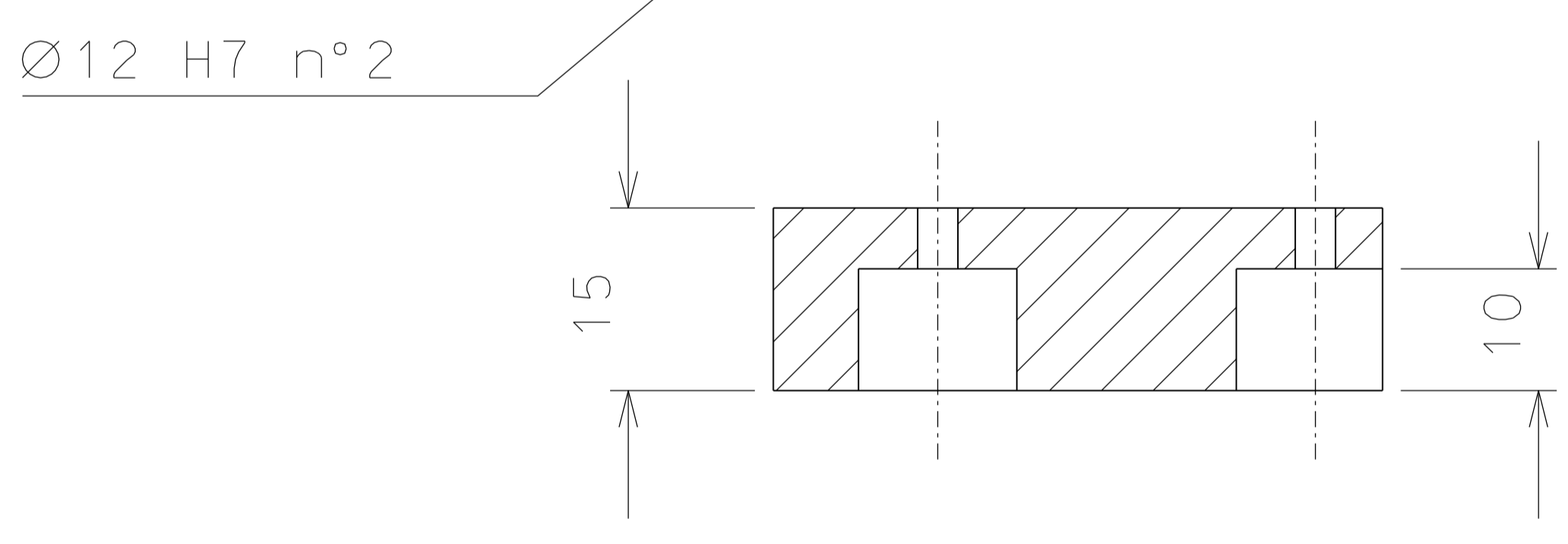
46



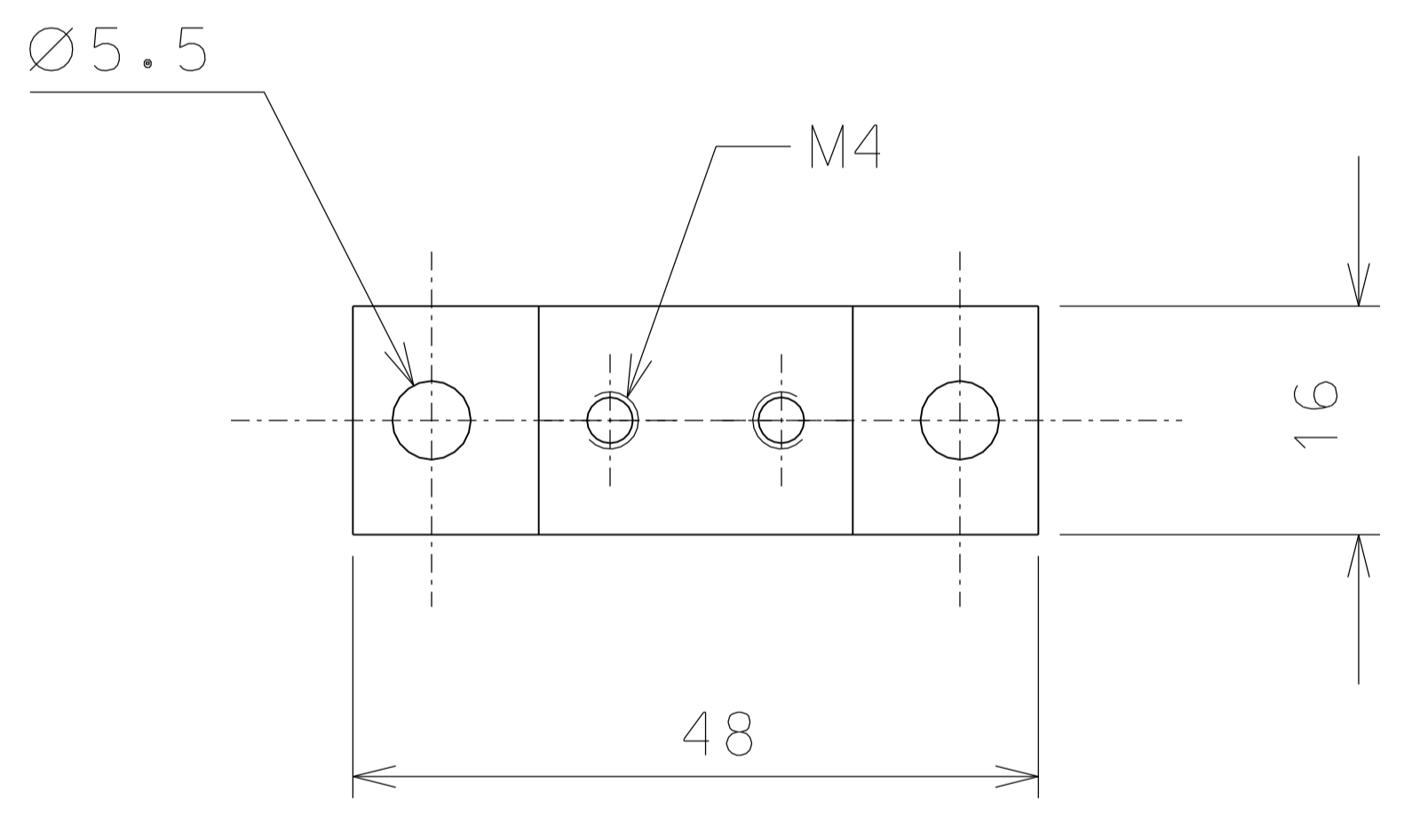
50



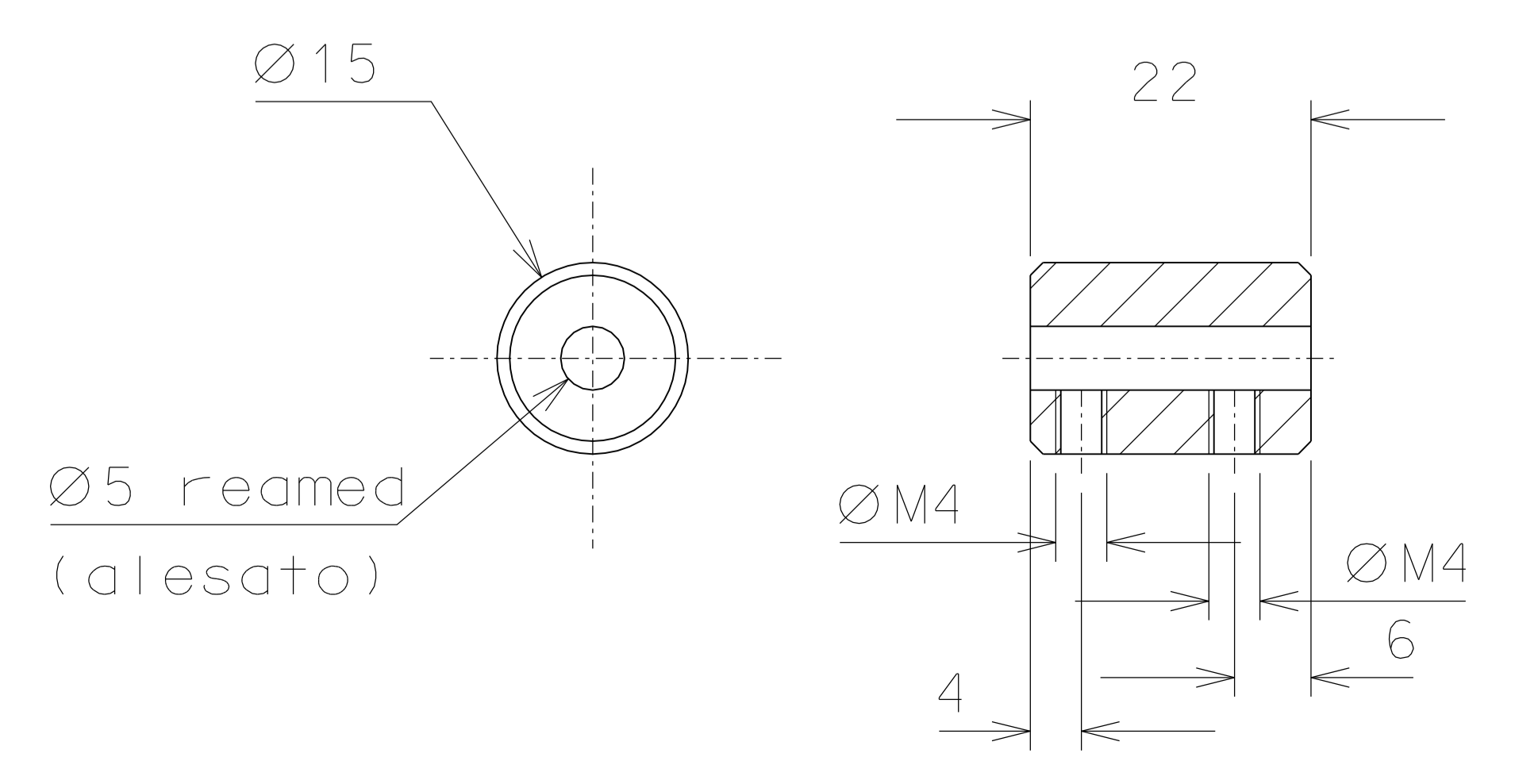
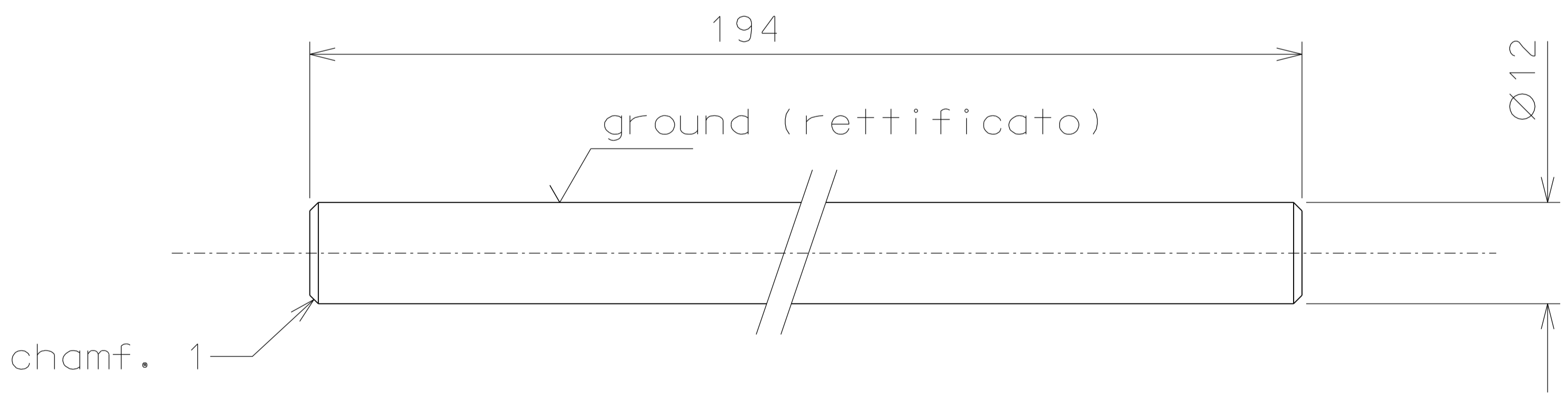
51



45



43



43.1

	added part 43.1	11-11-06	
	eliminated incorrect dimension	04-05-06	
	modified number of parts	08-04-06	
	modified holes of motor	04-02-06	
ref.	note	date	signature
modifications			
46	4	EN 6082	1/1
45	8	AISI 304	1/1
43.1	4	AISI 304	1/1
43	4	AISI 304	1/1
42	4	EN 6082	1/1
ref.	pieces	mat. and treatments	scale
51	4	AISI 304	1/1
50	4	AISI 304	1/1
47	4	peek 1000	1/1

General machining tolerances UNI 5307-63							
Dimensions	< 6	>6-30	>30-120	>120-315	>315-1000	>1000-2000	>2000-4000
linear Toll.	±0.1	±0.2	±0.3	±0.5	±0.8	±1.2	±2
angular Toll.	±1	±30'	±20'	±10' referred to the shortest side			
designed for				R.De Salvo			
draw. by				G.Gennaro-PRMEC			
date				12-01-05			
title				HAM-OPTICAL BENCH			
SLIDE				LIGO-D051143-04-D			
detail from				108		A 2	