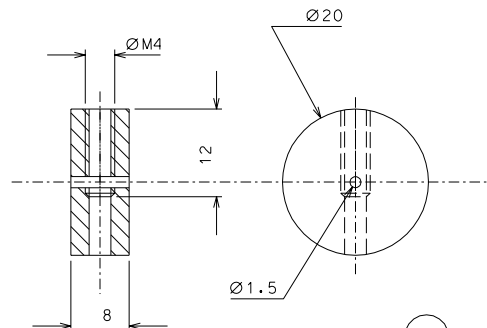
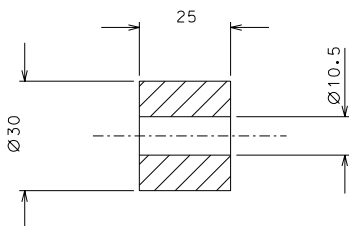


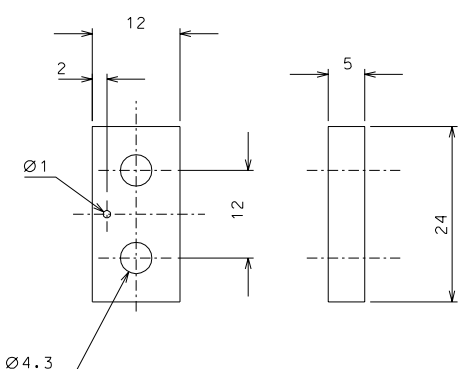
69



57



70



59

modified det. 69		5-02-06	
modified det. 57-69		15-01-06	
ref.	note	date	signature
modifications			
70	8	EN 6082	1/1
69	4	EN 6082	1/1
59	4	AISI 304	2/1
57	4	AISI 304	2/1
ref.	pieces	mat. and treatments	scale

General machining tolerances UNI 5307-63								
Dimensions	< 6	6-30	30-120	120-315	315-1000	>1000-2000	>2000-4000	> 4000
Linear Toli.	± 0.1	± 0.2	± 0.3	± 0.5	± 0.8	± 1.2	± 2	± 3
angular Toli.	± 1	± 30'	± 20'	± 10' referred to the shortest side				
designed for							R.De Salvo	
draw. by							G. Gennaro-PROMECC	
date							13-01-05	scale 1/1
title							LIGO PROJECT	
HAM-OPTICAL BENCH							LIGO-D051141-02-D	
MOTORIZED VERTICAL SPRING							detail from 109	A 2