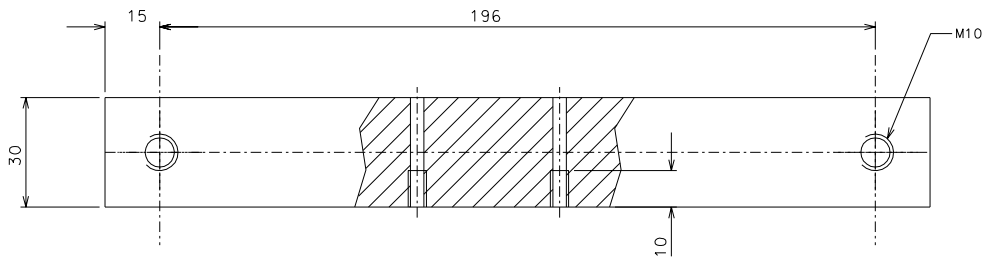
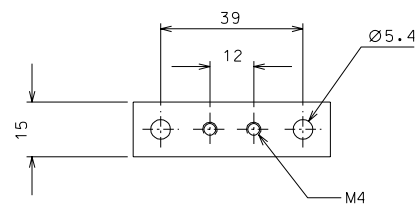
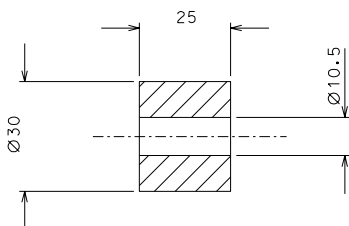


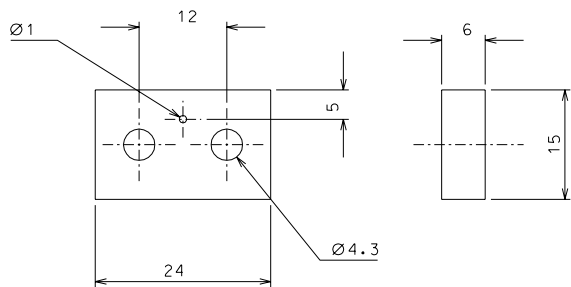
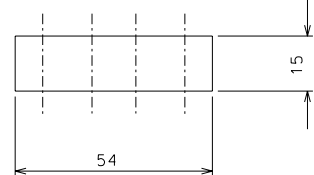
69



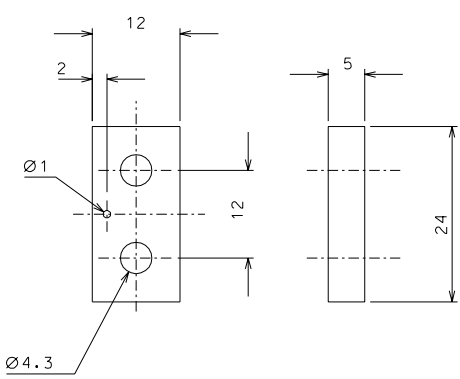
70



57



58



59

ref.	note	date	signature
modifications			
70	8 EN 6082	1/1	
69	4 EN 6082	1/1	
59	4 AISI 304	2/1	
58	4 AISI 304	2/1	
57	4 AISI 304	1/1	
ref.	pieces	mat. and treatments	scale

General machining tolerances UNI 5307-63								
Dimensions	< 6	= 6-30	> 30-120	> 120-315	> 315-1000	> 1000-2000	> 2000-4000	> 4000
Linear Toli.	± 0.1	± 0.2	± 0.3	± 0.5	± 0.8	± 1.2	± 2	± 3
angular Toli.	± 1'	± 30"	± 20"	± 10" referred to the shortest side				

designed for		R.De Salvo	
draw. by		G. Gennaro-PROMECA	
date	13-01-05	scale	1/1
title		HAM-OPTICAL BENCH	
LIGO PROJECT		LIGO-D051141-00-D	
MOTORIZED VERTICAL SPRING		sheet	109
		scale	A 2