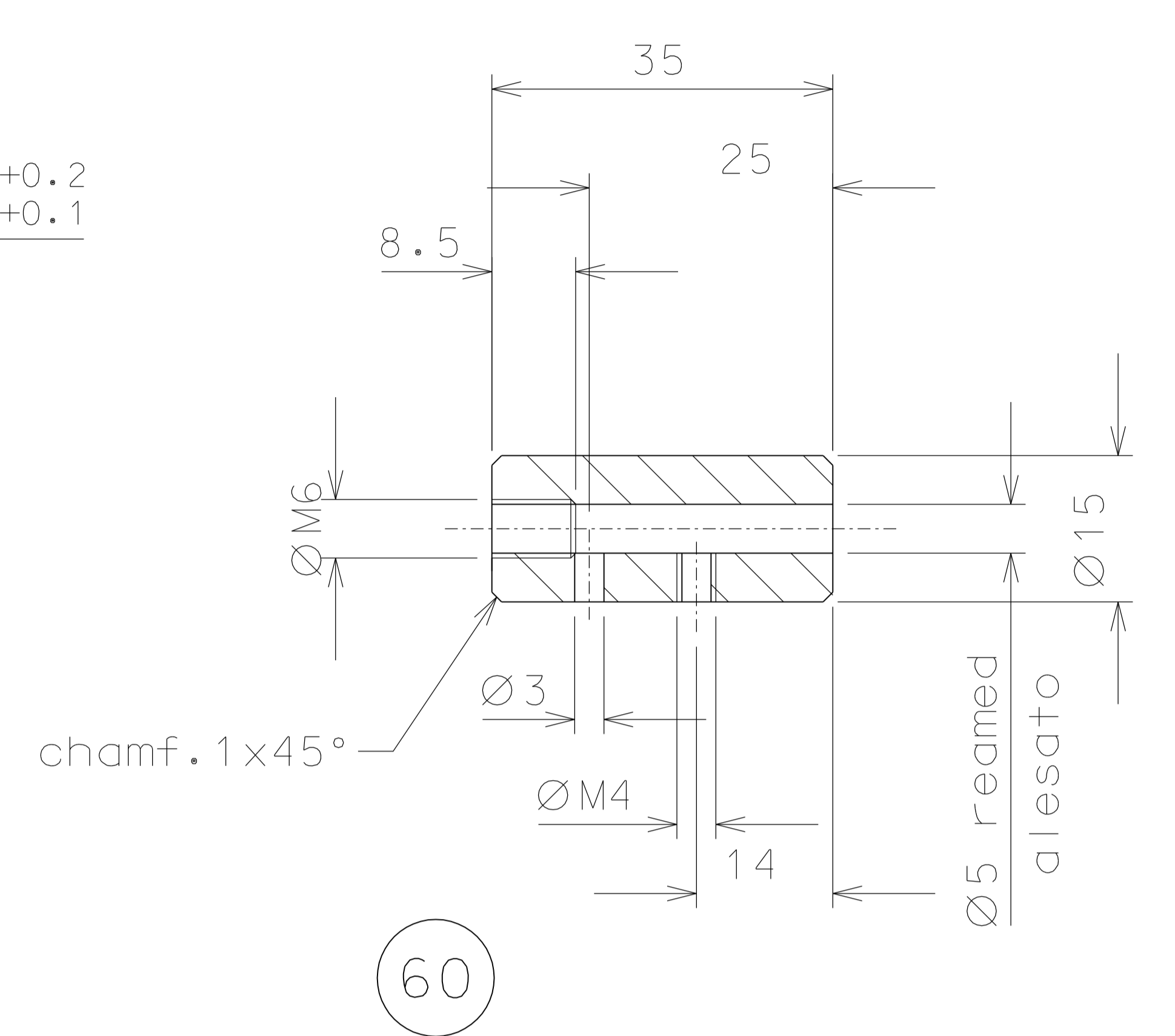
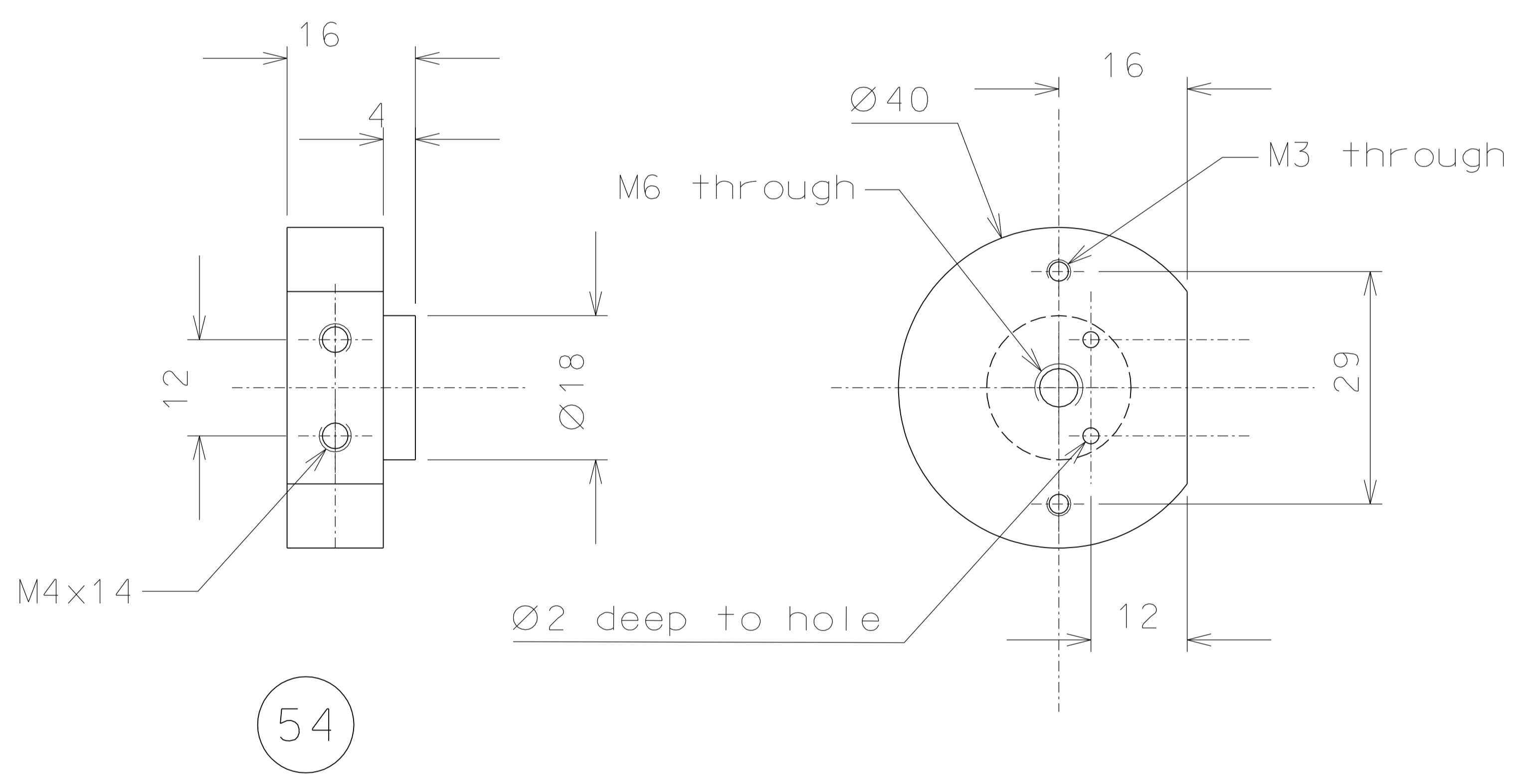


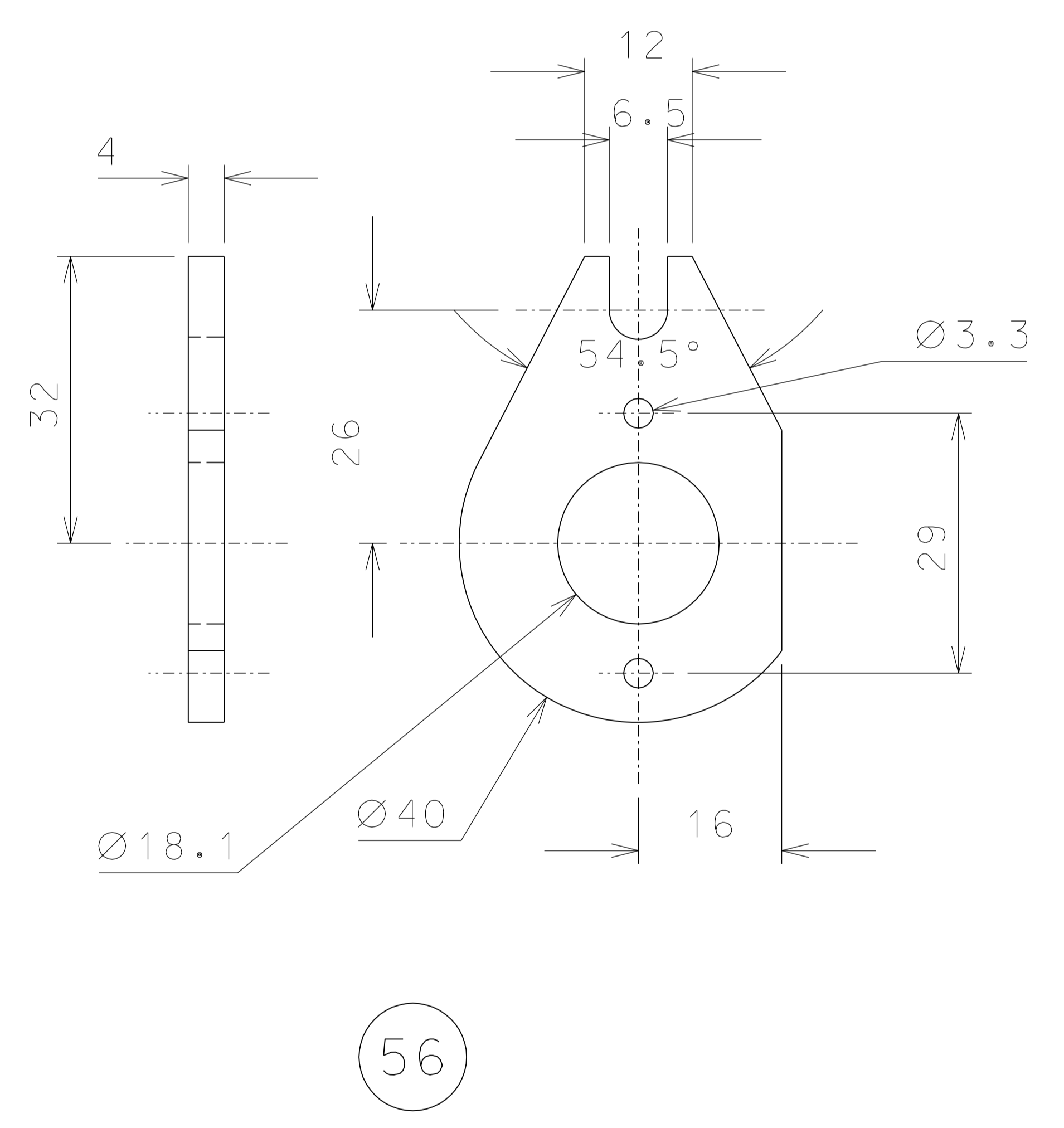
61



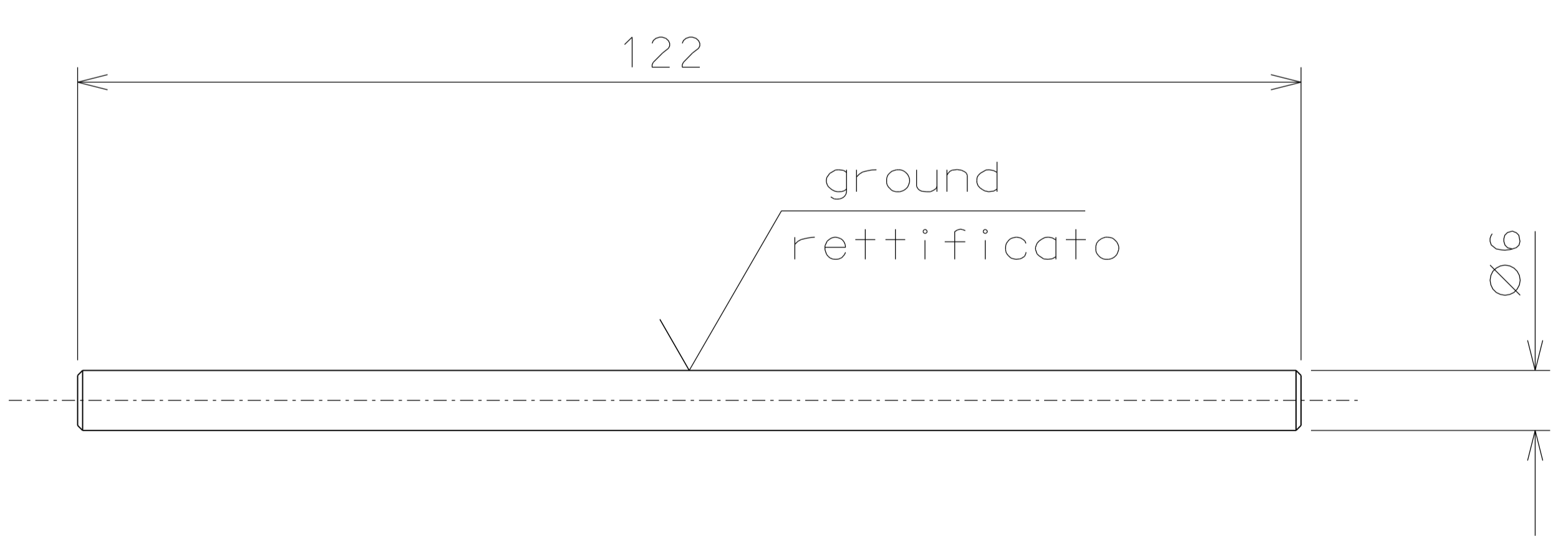
60



54



56



55



53

	modified dimension in part 56	11-11-06	
	modified part 53	30-09-06	
	modified detail 61	05-07-06	
	modified detail 60	09-04-06	
ref.	note	date	signature
modifications			
60	4	AISI 304	1/1
56	4	bronze B14	1/1
55	4	inox	1/1
54	4	peek 1000	1/1
53	4	inox	1/1
ref.	pieces	mat. and treatments	scale
61	4	EN 6082	1/1

General machining tolerances UNI 5307-63								
Dimensions	< 6	> 6-30	> 30-120	> 120-315	> 315-1000	> 1000-2000	> 2000-4000	> 4000
linear Toll.	± 0.1	± 0.2	± 0.3	± 0.5	± 0.8	± 1.2	± 2	± 3
angular Toll.	± 1	± 30'	± 20'	± 10' referred to the shortest side				
designed for				R.De Salvo				
draw. by				G.Gennaro-PROMECC				
date				13-01-05				
scale				1/1				
title				LIGO PROJECT				
HAM-OPTICAL BENCH				LIGO-D051140-05-D				
MOTORIZED VERTICAL SPRING				detail from 109 A 2				