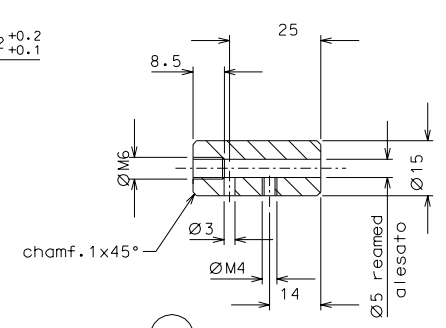
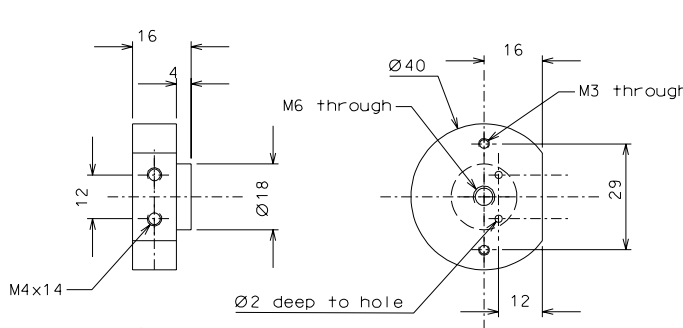


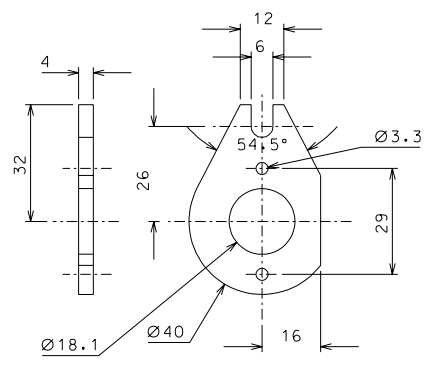
61



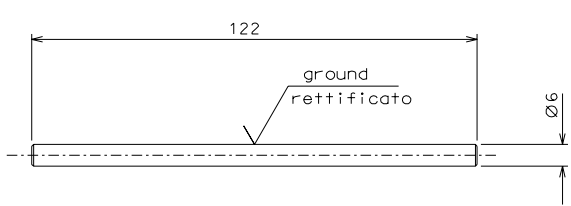
60



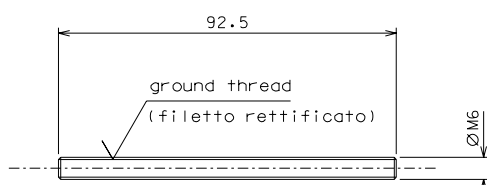
54



56



55



53

modified part 53	30-09-06		
modified detail 61	05-07-06		
modified detail 60	09-04-06		
modified holes of motor	04-02-06		
ref.	note	date	signature
modifications			
60	4	AISI 304	1/1
56	4	bronze B14	1/1
55	4	inox	1/1
54	4	peek 1000	1/1
53	4	inox	1/1
ref.	pieces	mat. and treatments	scale
61	4	EN 6082	1/1

General machining tolerances UNI 5307-63						
Dimensions	< 6	= 6-30	> 30-120	> 120-315	> 315-1000	> 1000-2000
Linear Toli.	± 0.1	± 0.2	± 0.3	± 0.5	± 0.8	± 1.2
angular Toli.	± 1'	± 30'	± 20'	± 10'		
referred to the shortest side						
designed for						
R.De Salvo						
draw. by						
G. Gennaro-PROMEC						
date						
13-01-05						
scale						
1/1						
title						
HAM-OPTICAL BENCH						
MOTORIZED VERTICAL SPRING						
LIGO PROJECT						
LIGO-D051140-04-D						
detail from						
109						
scale						
A 2						