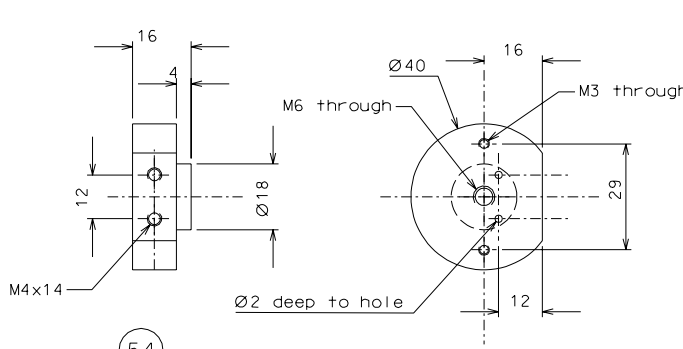
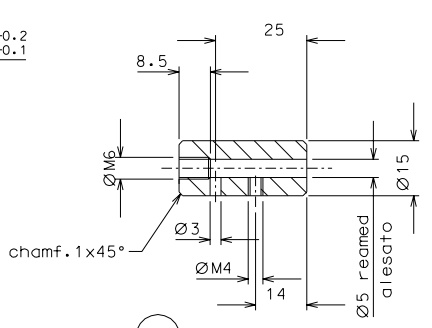
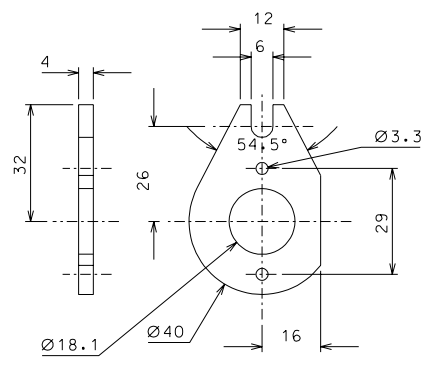


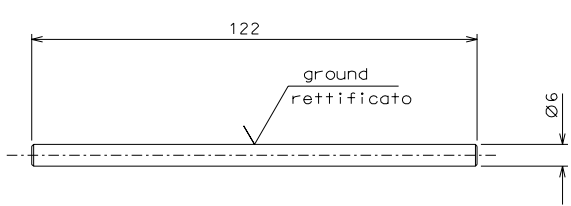
60



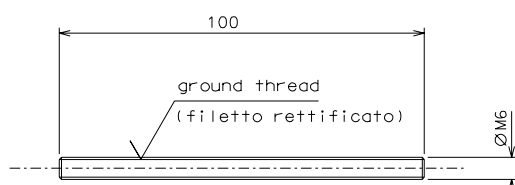
54



56



55



53

modified detail 60		09-04-06	
modified holes of motor		04-02-06	
ref.	note	date	signature
modifications			
60	4	AISI 304	1/1
56	4	bronze B14	1/1
55	4	inox	1/1
54	4	peek 1000	1/1
53	4	inox	1/1
ref.	pieces	mat. and treatments	scale
61	4	EN 6082	1/1

General machining tolerances UNI 5307-63								
Dimensions	< 6	6-30	30-120	120-315	315-1000	>1000-2000	>2000-4000	> 4000
Linear Toli.	± 0.1	± 0.2	± 0.3	± 0.5	± 0.8	± 1.2	± 2	± 3
angular Toli.	± 1'	± 30'	± 20'	± 10'				
referred to the shortest side								
designed for							R.De Salvo	
draw. by							G. Gennaro-PROMEC	
date							13-01-05	
title							scale	
HAM-OPTICAL BENCH							1/1	
MOTORIZED VERTICAL SPRING							LIGO-D051140-02-D	
ref. from							109	
							A 2	