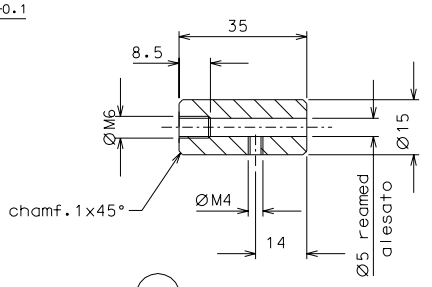
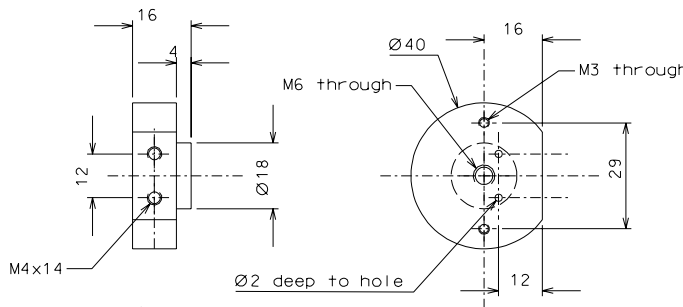


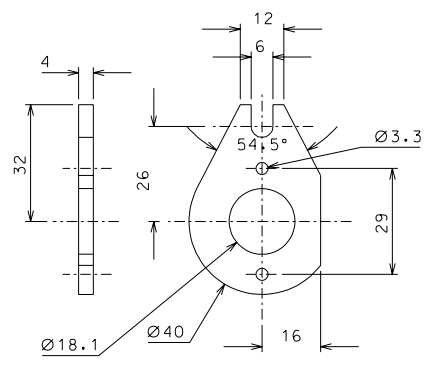
60



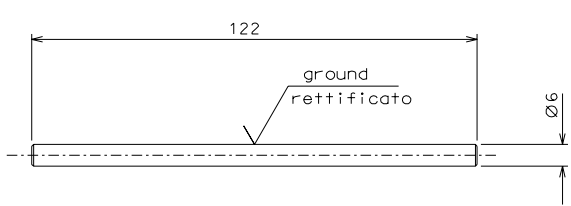
61



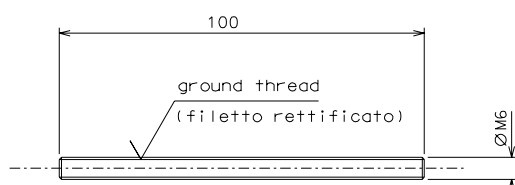
54



56



55



53

modified holes of motor				4-02-06	
ref.	note	date	signature		
modifications					
60	4	AISI 304	1/1		
56	4	bronze B14	1/1		
55	4	inox	1/1		
54	4	peek 1000	1/1		
53	4	inox	1/1	61	4 EN 6082 1/1
ref.	pieces	mat. and treatments	scale	ref.	pieces mat. and treatments scale

General machining tolerances UNI 5307-63						
Dimensions	< 6	6-30	30-120	120-315	315-1000	>1000-2000 >2000-4000 >4000
Linear Toli.	± 0.1	± 0.2	± 0.3	± 0.5	± 0.8	± 1.2 ± 2 ± 3
angular Toli.	± 1'	± 30'	± 20'	± 10' referred to the shortest side		
designed for			R.De Salvo			
draw. by			G. Gennaro-PROMEC			
date			13-01-05		scale 1/1	
title			HAM-OPTICAL BENCH			LIGO-D051140-01-D
			MOTORIZED VERTICAL SPRING			detail from 109 A 2