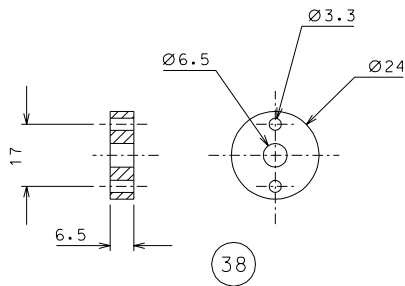
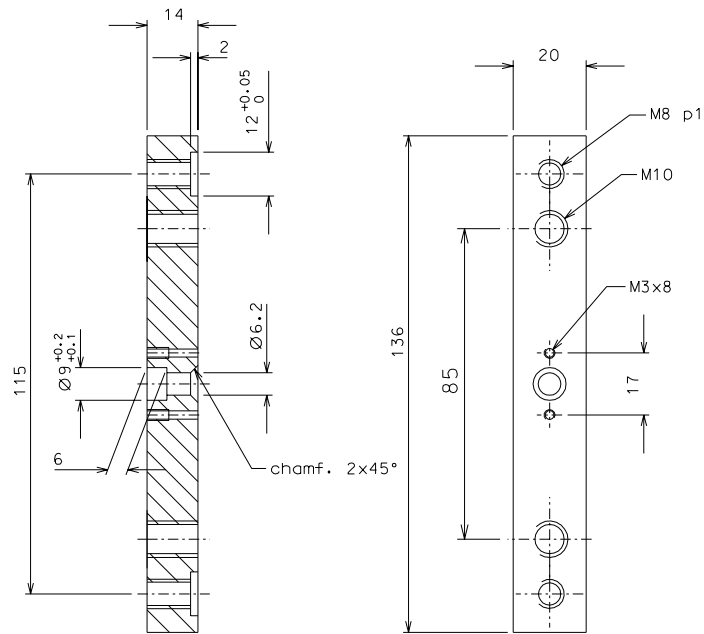


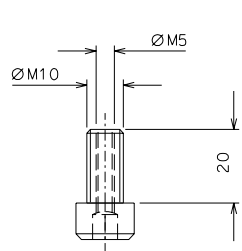
37



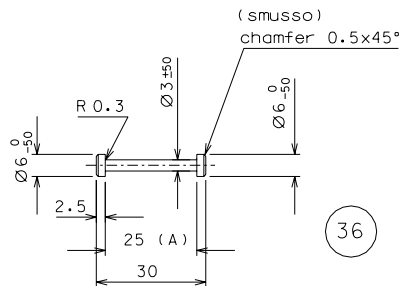
38



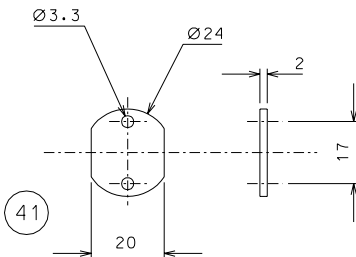
39 LASTI prototype only
nickel flashing
(nichelato leggero)



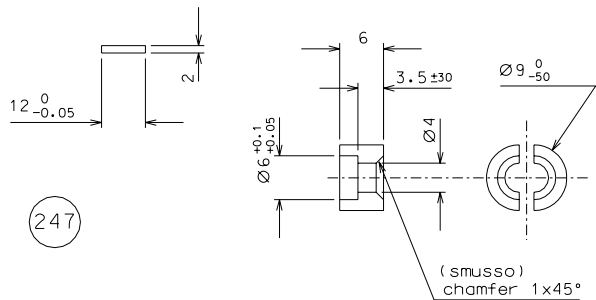
248 LASTI prototype only



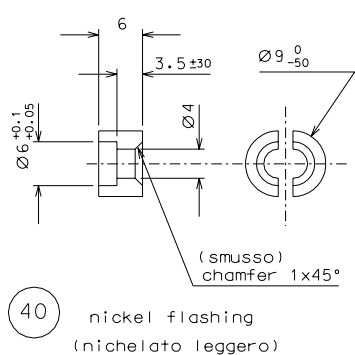
36



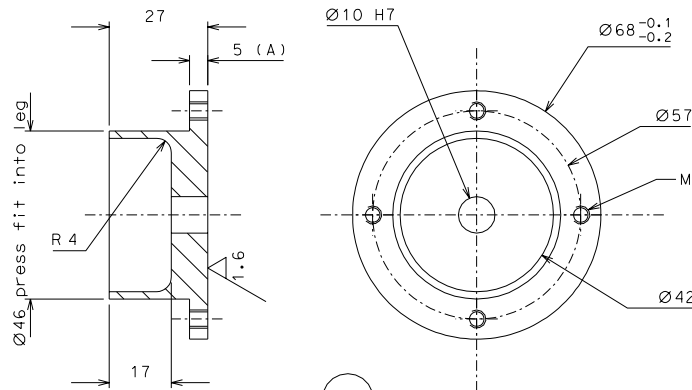
41



247



40 nickel flashing
(nichelato leggero)



34

NOTE: the quotes marked with (A) in parts
34, 36, 37 must be equal to 0.01

modified parts 39, added 247, 248		17-08-06	
modified parts 39-41		29-04-06	
ref.	note	date	signature
modifications			
39	4	C 40	1/1
38	4	AISI 304	1/1
37	4	AISI 304	1/1
36	4	maraging	1/1
34	4	AISI 304	1/1
ref.	pieces	mat. and treatments	scale
248	8	AISI 316	1/1
247	8	brass	1/1
41	4	AISI 304	1/1
40	8	C 40	1/1
ref.	pieces	mat. and treatments	scale

General machining tolerances UNI 5307-63								
Dimensions	< 6	> 6-30	> 30-120	> 120-315	> 315-1000	> 1000-2000	> 2000-4000	> 4000
Linear Toli.	± 0.1	± 0.2	± 0.3	± 0.5	± 0.8	± 1.2	± 2	± 3
Angular Toli.	± 1'	± 30'	± 20'	± 10' referred to the shortest side				
designed for				R.De Salvo				
draw. by				G. Gennaro-PROMEC				
date				9-01-05		scale 1/1		
title				HAM-OPTICAL BENCH				
ref. from				LIGO-D051137-02-D				
sheet				107		A 2		