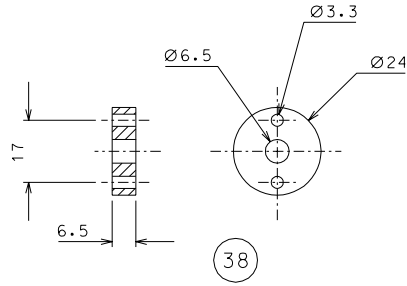
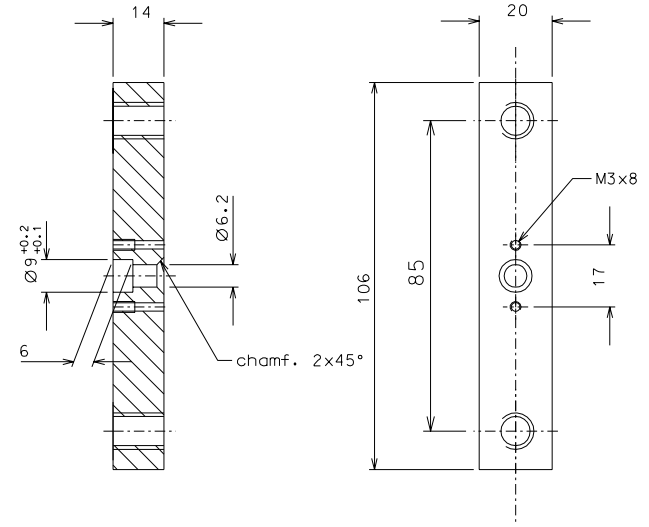


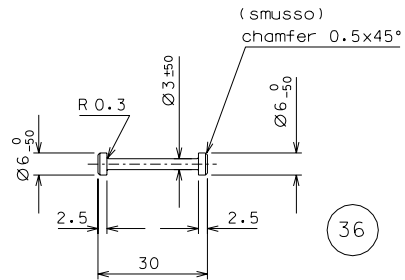
37



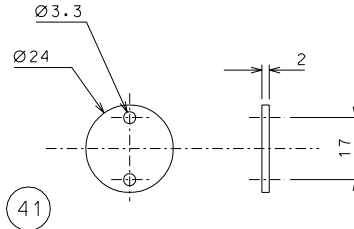
38



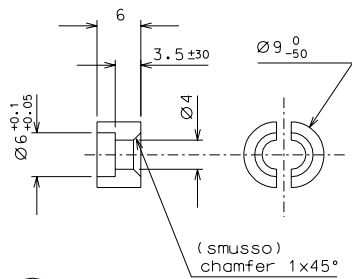
39 nickel flashing  
(nichelato leggero)



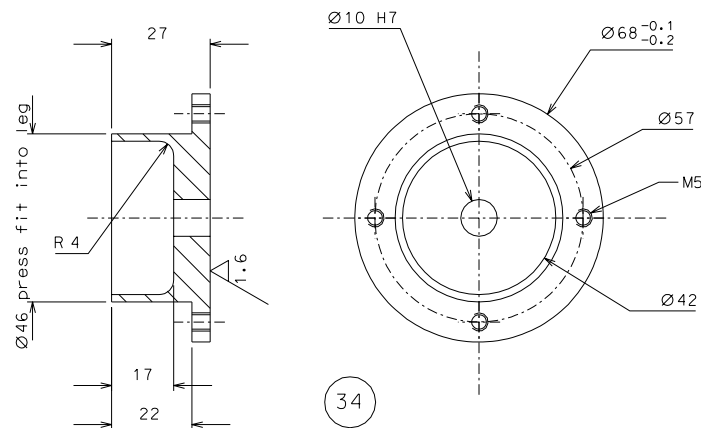
36



41



40 nickel flashing  
(nichelato leggero)



34

ref.	note	date	signature
modifications			
39	4 C 40	1/1	
38	4 AISI 304	1/1	
37	4 AISI 304	1/1	
36	4 maraging	1/1	41 4 AISI 304 1/1
34	4 AISI 304	1/1	40 8 C 40 1/1
ref.	pieces	mat. and treatments	scale
ref.	pieces	mat. and treatments	scale

General machining tolerances UNI 5307-63						
Dimensions	< 6	> 6-30	> 30-120	> 120-315	> 315-1000	> 1000-4000
Linear Toli.	± 0.1	± 0.2	± 0.3	± 0.5	± 0.8	± 1.2
angular Toli.	± 1'	± 30'	± 20'	± 10' referred to the shortest side		
designed for <b>R.De Salvo</b>						
draw. by <b>G. Gennaro-PROMEC</b>				date 9-01-05		
title <b>HAM-OPTICAL BENCH</b>				scale 1/1		
INVERTED PENDULUM				data <sup>1</sup> from 107		
						A 2