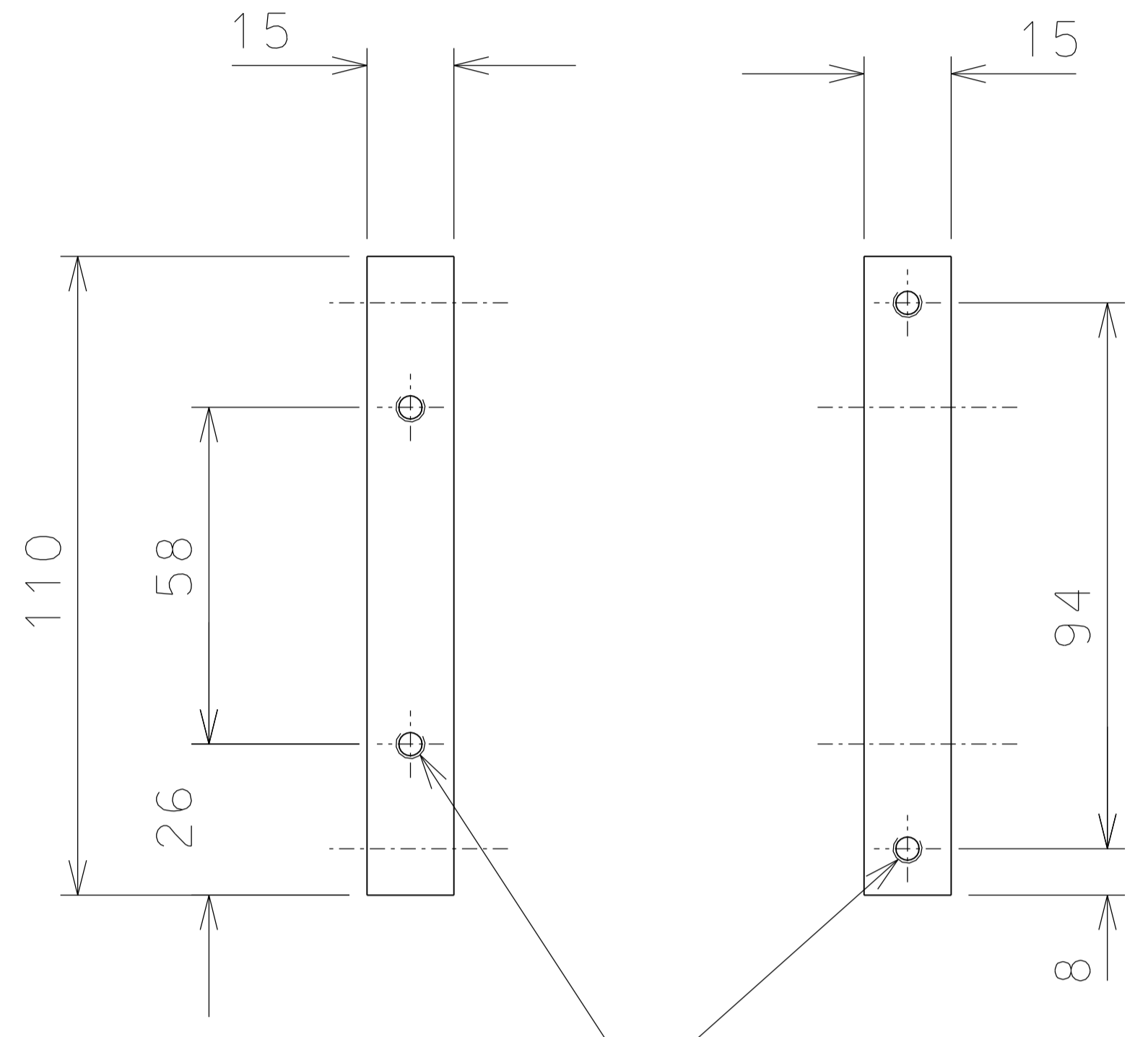
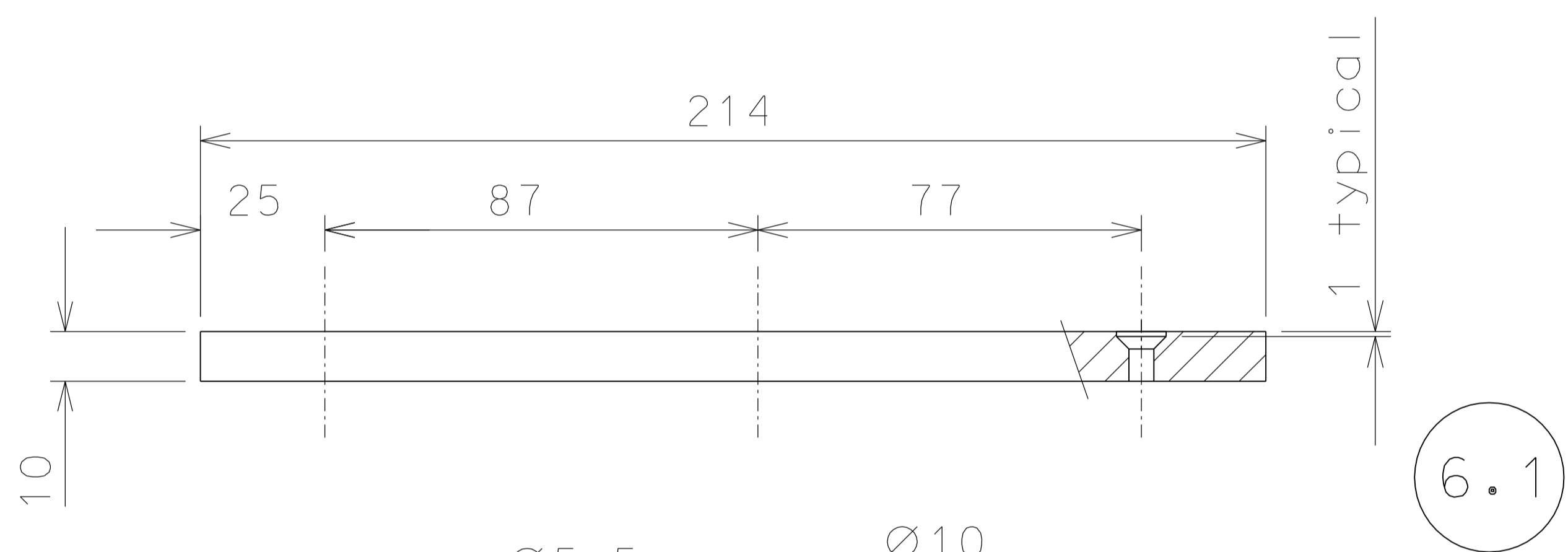


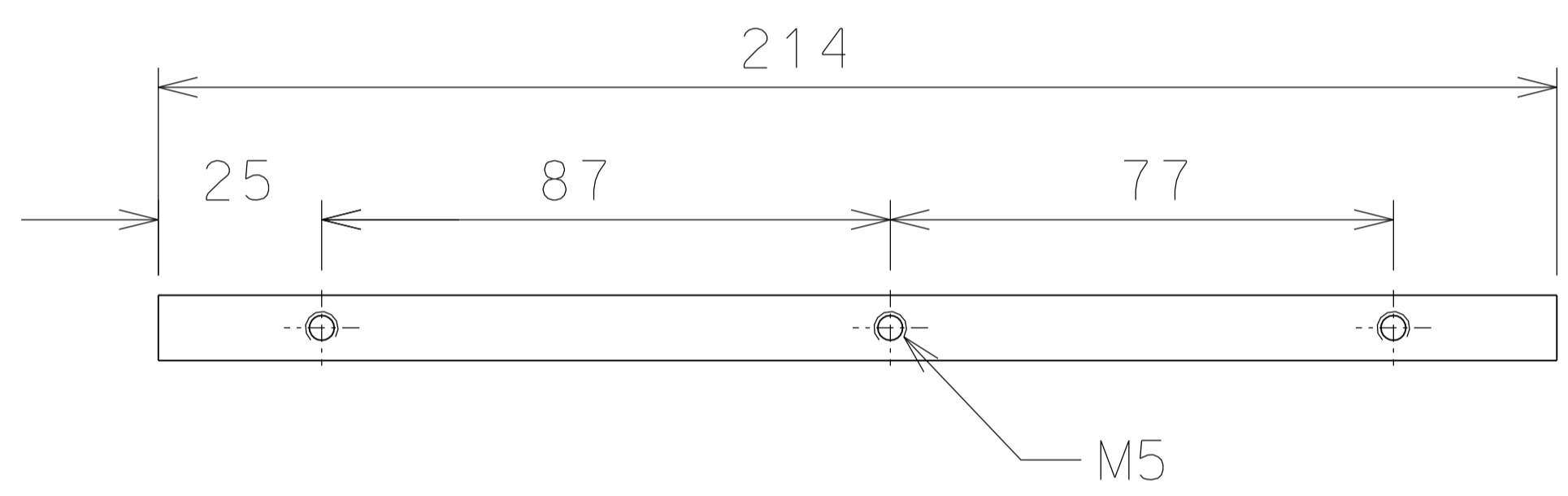
5



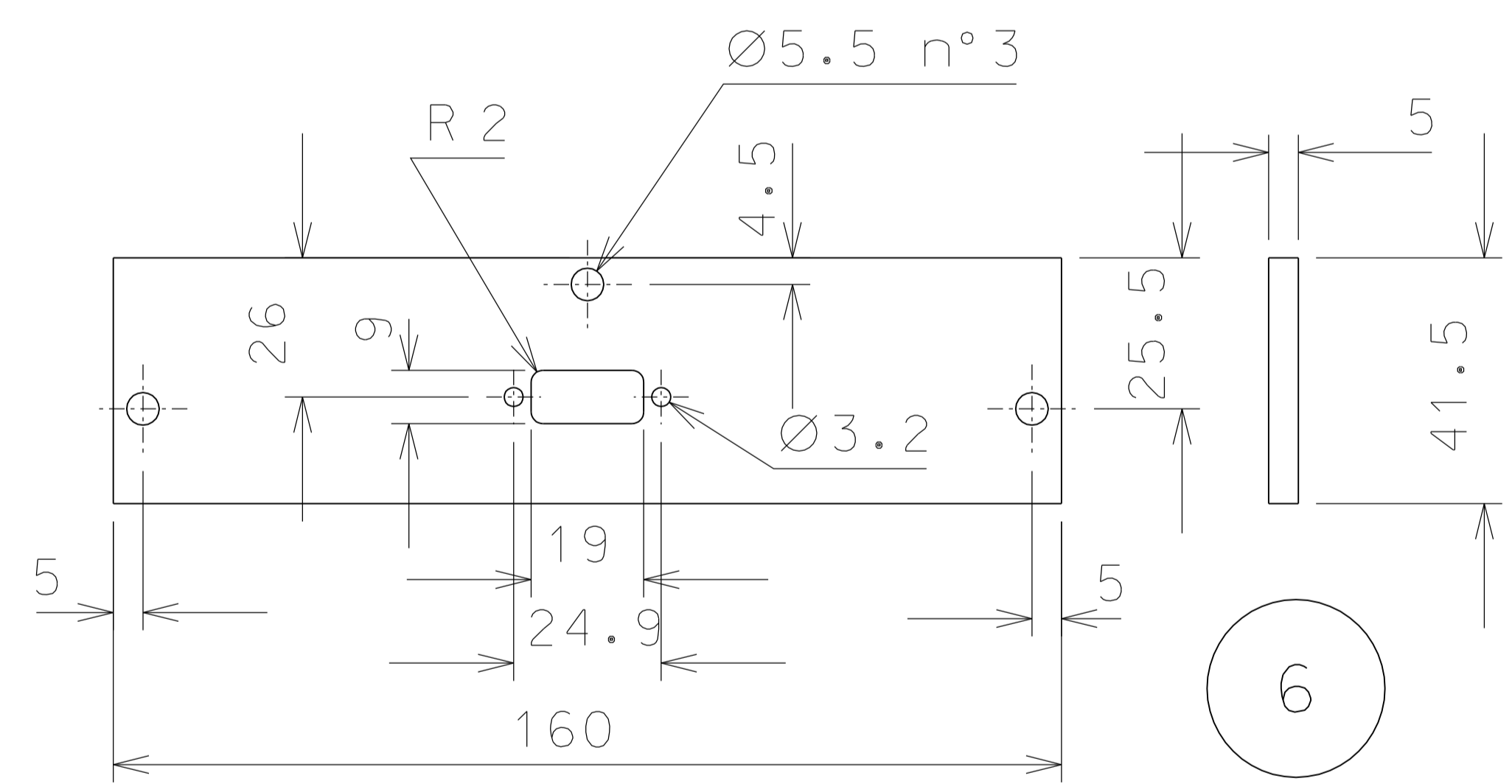
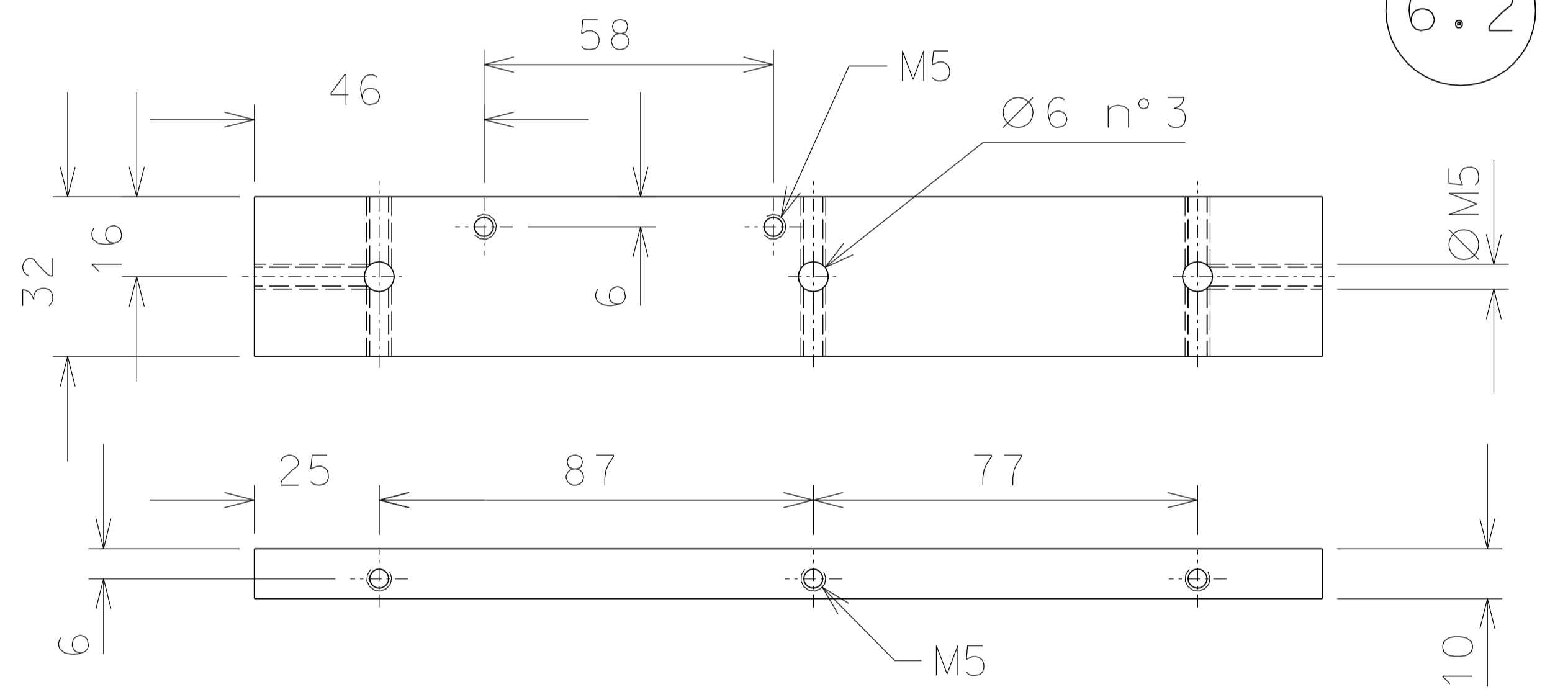
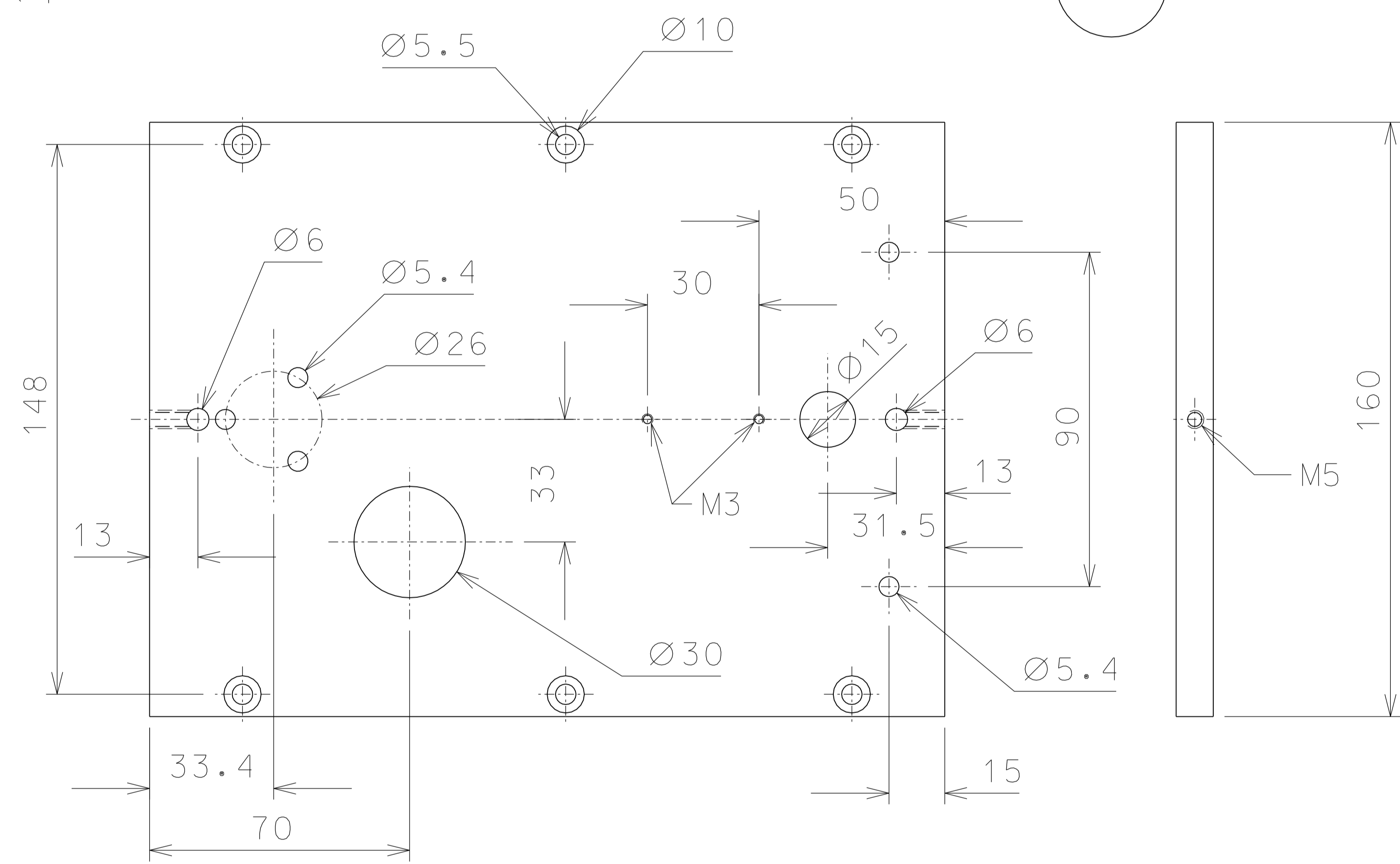
5.1



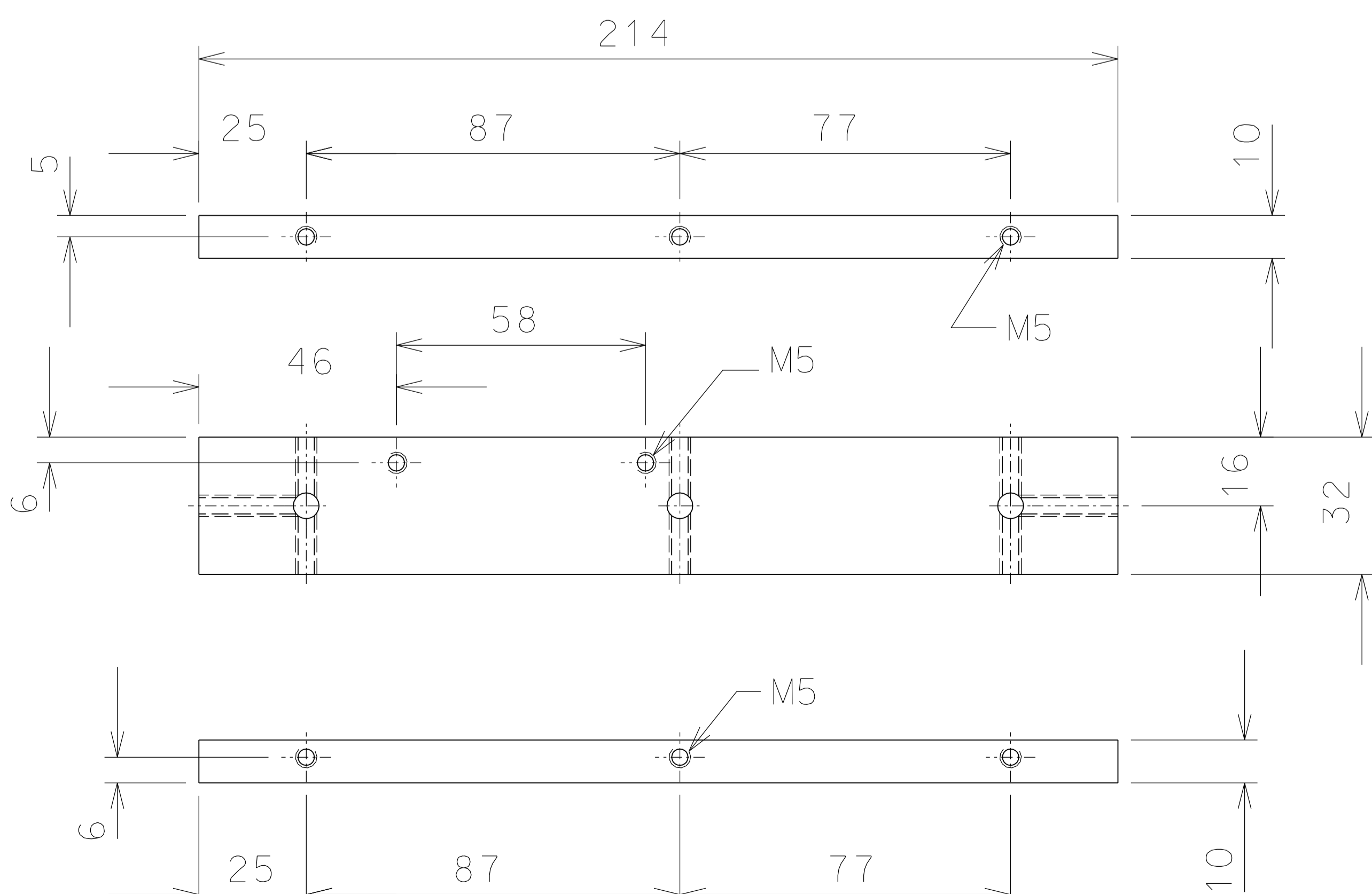
6.1



6.2



6



6.3

	modified parts 5-6-6.1	05-11-06	
	modified dimension parts 6-6.2-6.3	08-09-06	
	modified holes part 5	06-09-06	
	added holes for connection	19-06-06	
ref.	note	data	firm
modifiche			
6.2	4 EN 6082	1/2	
6.1	4 EN 6082	1/2	
6	8 EN 6082	1/2	
5.1	8 AISI 304	1/2	
5	4 AISI 304	1/2	
6.3	4 EN 6082	1/2	
ref.	pieces	mat. and treatments	scale

General machining tolerances UNI 5307-63								
Dimensions	< 6	> 6-30	> 30-120	> 120-315	> 315-1000	> 1000-2000	> 2000-4000	> 4000
Linear Toll.	± 0.1	± 0.2	± 0.3	± 0.5	± 0.8	± 1.2	± 2	± 3
angular Toll.	± 1	± 30'	± 20'	± 10' referred to the shortest side				
designed for				R.De Salvo				
draw. by				G.Gennaro-PROMECC				
date				04-09-06				
scale				1/2				
title				HAM-OPTICAL BENCH				
DETAILS LVDT ACTUATOR				LIGO-D051130-05-D				
detail from				105		A 2		