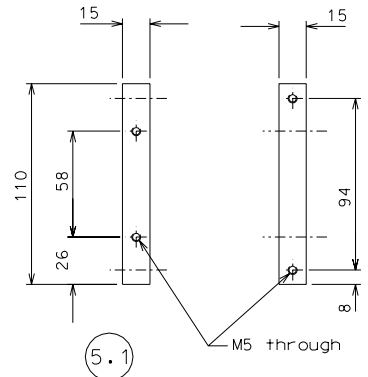
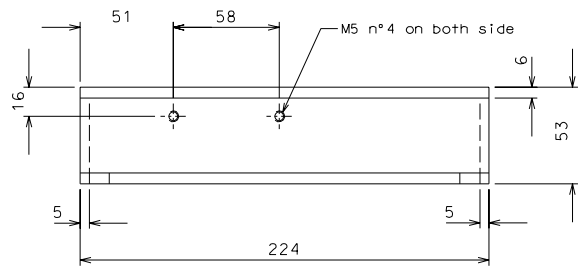
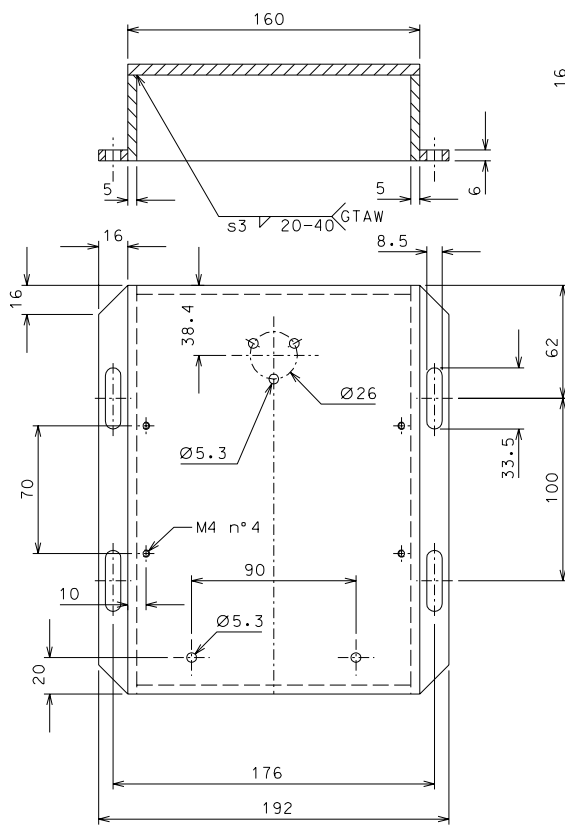


5



5.1



6

replaced the holes on the base				30-03-06
ref.	note	date	signature	
modifications				
6	4	AISI 304 L	1/2	
5.1	8	AISI 304 L	1/2	
5	4	AISI 304 L	1/2	
ref.	pieces	mat. and treatments	scale	
ref.	pieces	mat. and treatments	scale	

General machining tolerances UNI 5307-63

Dimensions	< 6	6-30	30-120	120-315	315-1000	1000-2000	2000-4000	> 4000
Linear Toli.	± 0.1	± 0.2	± 0.3	± 0.5	± 0.8	± 1.2	± 2	± 3
angular Toli.	± 1'	± 30'	± 20'	± 10' referred to the shortest side				

designed for: **R.De Salvo**

draw. by: **G. Gennaro-PROMEC**

date: 5-01-05 scale: 1/2

title: **HAM-OPTICAL BENCH**
DETAILS LVDT ACTUATOR

ref. from: 105 A 2