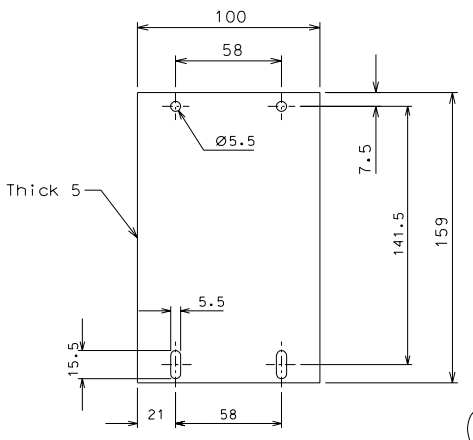
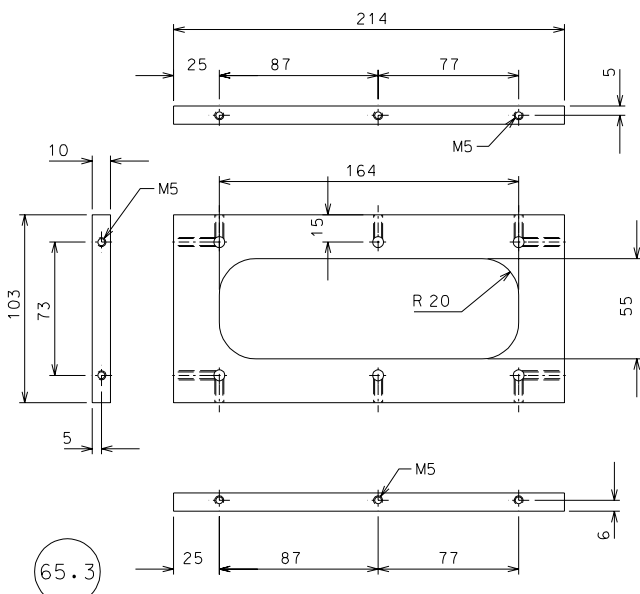


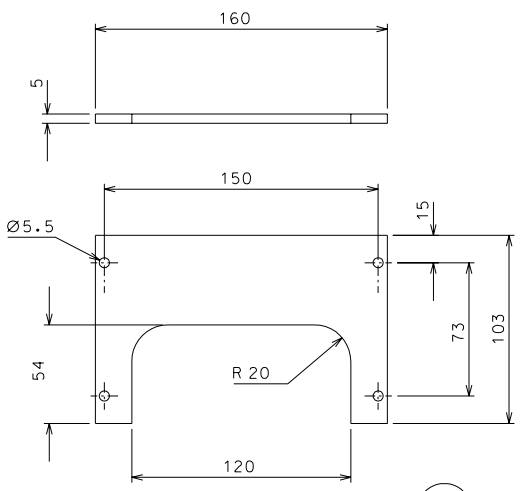
65.2



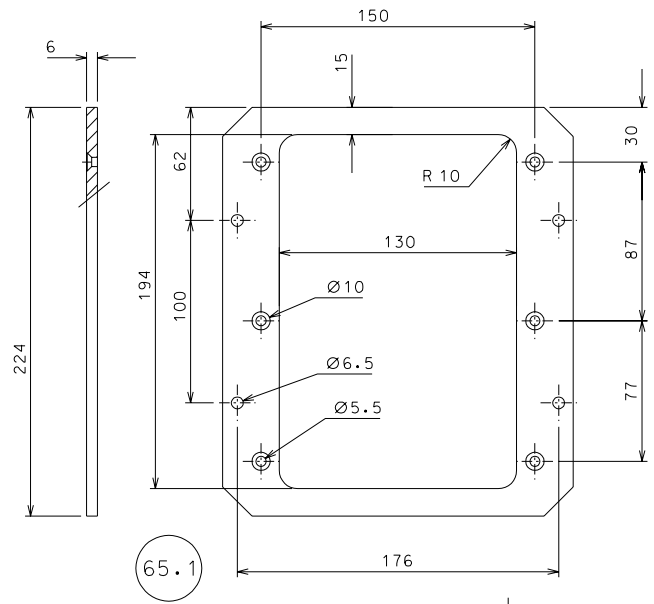
68



65.3



65



65.1

replaced the holes on the base				30-03-06	
ref.	note			date	firm
modifiche					
68	8	AISI 304	1/2		
65.3	4	EN 6082	1/2		
65.2	4	EN 6082	1/2		
65.1	12	EN 6082	1/2		
65	8	EN 6082	1/2		
ref.	pieces	mat. and treatments	scale	ref.	pieces

General machining tolerances UNI 5307-63						
Dimensions	< 6	6-30	>30-120	>120-315	>315-1000	>1000-2000
Linear Toli.	± 0.1	± 0.2	± 0.3	± 0.5	± 0.8	± 1.2
angular Toli.	± 1	± 30'	± 20'	± 10'		
referred to the shortest side						
designed for			R.De Salvo			
draw. by			G. Gennaro-PROMECC			
date			04-09-06		scale 1/2	
title			HAM-OPTICAL BENCH			
DETAILS LVDT ACTUATOR			LIGO-D051129-02-D		sheet 105 of 120	