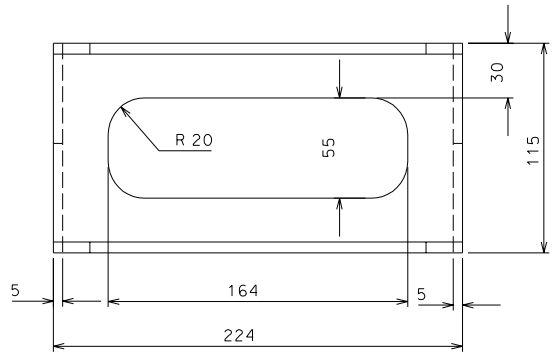
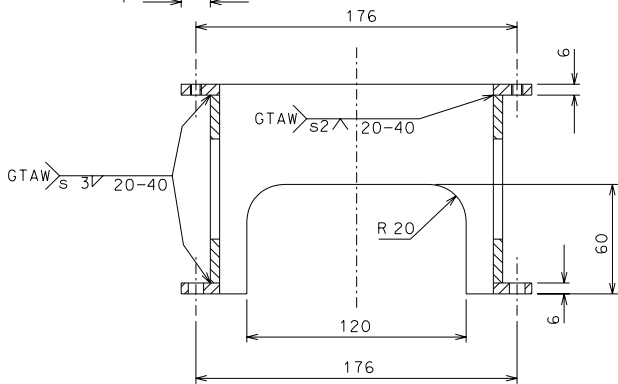
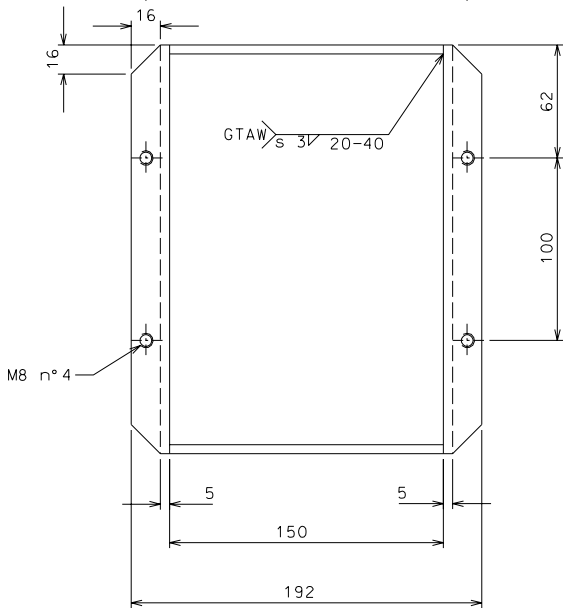


68



65



ref.	note	date	signature
modifications			
68	8	AISI 304 L	1/2
65	4	AISI 304 L	1/2
ref.	pieces	mat. and treatments	scale

General machining tolerances UNI 5307-63								
Dimensions	< 6	6-30	30-120	120-315	315-1000	>1000-2000	>2000-4000	> 4000
Linear Toli.	± 0.1	± 0.2	± 0.3	± 0.5	± 0.8	± 1.2	± 2	± 3
angular Toli.	± 1'	± 30'	± 20'	± 10' referred to the shortest side				
designed for				R.De Salvo				
draw. by				G. Gennaro-PROMECA				
date				5-01-05				
title				scale				
HAM-OPTICAL BENCH				1/2				
DETAILS LVDT ACTUATOR				LIGO-D051129-00-D				
detail from				105		A 2		