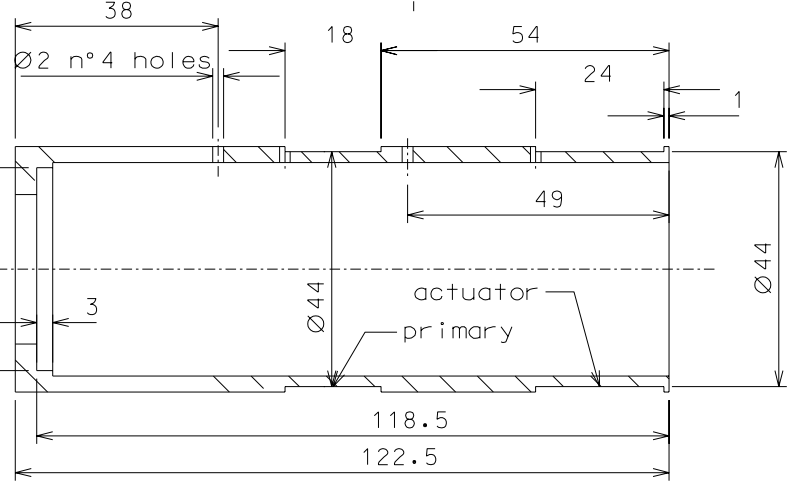
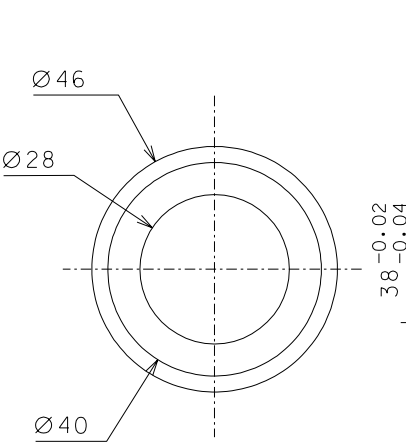


16



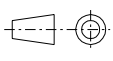
17

primary coil: wire  
41-AWG size 250 turns

actuator coil: wire  
43-AWG size 720 turns (six layers)

Use only kapton insulated wires approved by LIGO, all other kinds of enamel are forbidden.

		modified part 17		19-06-06			
		modified detail 16		27-10-05			
ref.		note		date	signature		
modifications							
17	4	peek 1000	1/1				
16	4	ARMCO steel	1/1				
ref.	pieces	mat. and treatments	scale	ref.	pieces	mat. and treatments	scale

General machining tolerances UNI 5307-63								
Dimensions	< 6	> 6-30	> 30-120	> 120-315	> 315-1000	> 1000-2000	> 2000-4000	> 4000
linear Toll.	± 0.1	± 0.2	± 0.3	± 0.5	± 0.8	± 1.2	± 2	± 3
angular Toll.	± 1	± 30'	± 20'	± 10' referred to the shortest side				
 <b>LIGO PROJECT</b>				designed for <b>R.De Salvo</b>				
				draw. by <b>G. Gennaro-PROMECC</b>				
				date 2-01-05		scale 1/1		
				LIGO-D051126-01-D				
title <b>HAM-OPTICAL BENCH</b> DETAILS FILTER				detail from 106		A 3		