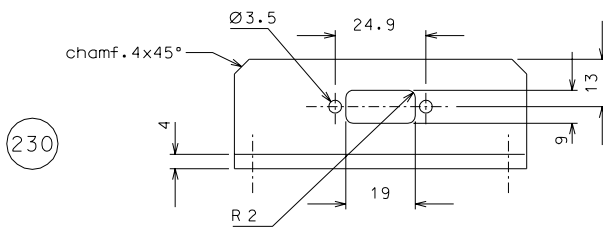
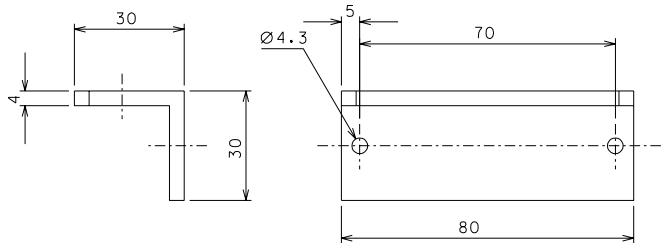


11 silver plated

Note for 19: Forced with light press fit into detail 17 after cleaning and before coiling



230



modified part 12	02-10-06		
modified part 11	01-10-06		
modified part 11	12-09-06		
added holes (encapsuled)	31-08-06		
ref.	note	date	signature
modifications			
230	4	AISI 304	1/1
20	64	EN 6082	1/1
19	4	AISI 304	1/1
12	4	EN 6082	1/1
11	4	AISI 316	1/1
ref.	pieces	mat. and treatments	scale
ref.	pieces	mat. and treatments	scale

General machining tolerances UNI 5307-63								
Dimensions	< 6	> 6-30	> 30-120	> 120-315	> 315-1000	> 1000-2000	> 2000-4000	> 4000
linear Toli.	± 0.1	± 0.2	± 0.3	± 0.5	± 0.8	± 1.2	± 2	± 3
angular Toli.	± 1'	± 30'	± 20'	± 10' referred to the shortest side				

designed for		R.De Salvo	
draw. by		G. Gennaro-PROMECC	
date	2-01-05	scale	1/1
title		HAM-OPTICAL BENCH	
DETAILS FILTER		detail	106
		sheet	A 2