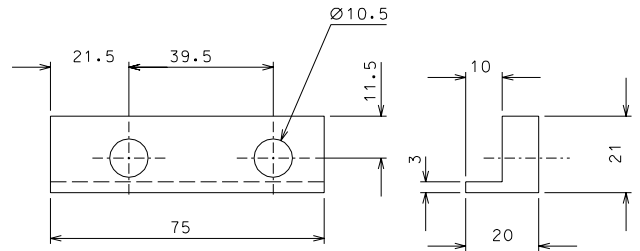
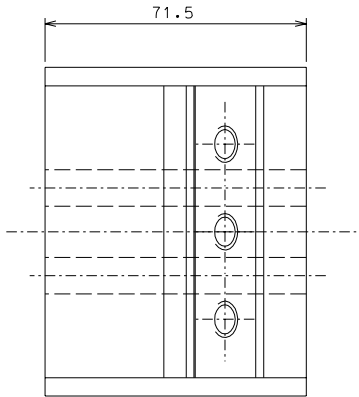
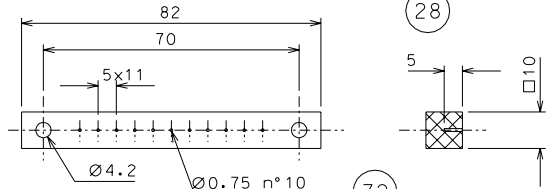
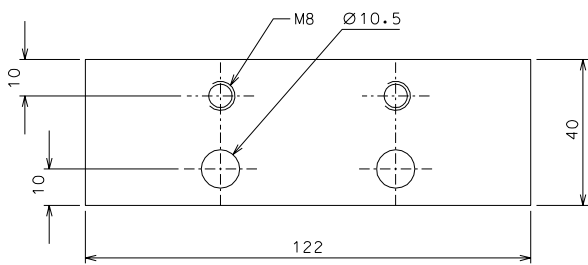
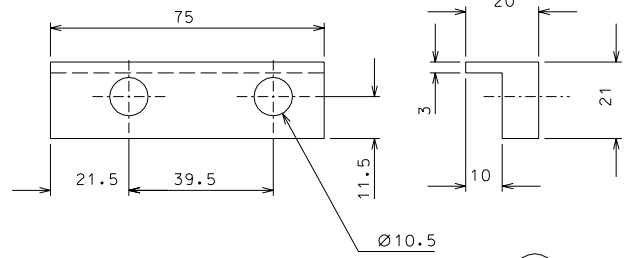
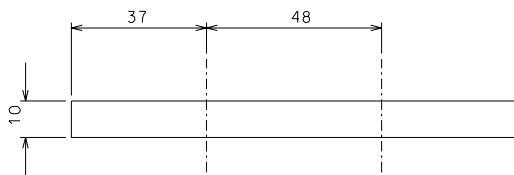


26



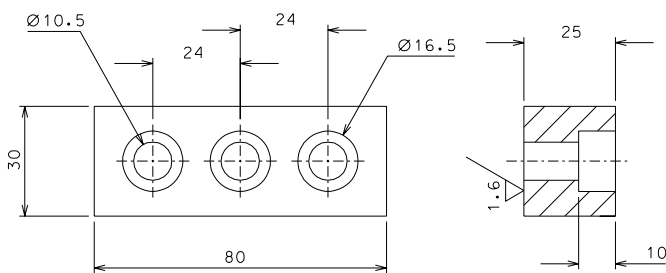
27



28

24 nickel flashing

72



21

modified detail 26				09-04-06	
modified n° parts of detail 28				10-02-06	
ref.	note	date	signature		
modifications					
28	32	AISI 304	1/1		
27	32	AISI 304	1/1		
26	32	AISI 304	1/1		
24	32	Fe 360	1/1		
21	32	AISI 304	1/1	72	8 peek 1000 1/1
ref.	pieces	mat. and treatments	scale	ref.	pieces mat. and treatments scale

General machining tolerances UNI 5307-63								
Dimensions	< 6	6-30	>30-120	>120-315	>315-1000	>1000-2000	>2000-4000	>4000
Linear Toli.	± 0.1	± 0.2	± 0.3	± 0.5	± 0.8	± 1.2	± 2	± 3
angular Toli.	± 1'		± 30'	± 20'	± 10'			
referred to the shortest side								
designed for								
R.De Salvo								
draw. by								
G. Gennaro-PROMECC								
date								
30-12-04								
scale								
1/1								
title								
HAM-OPTICAL BENCH								
DETAILS FILTER								
detail								
from 105-106								
A 2								