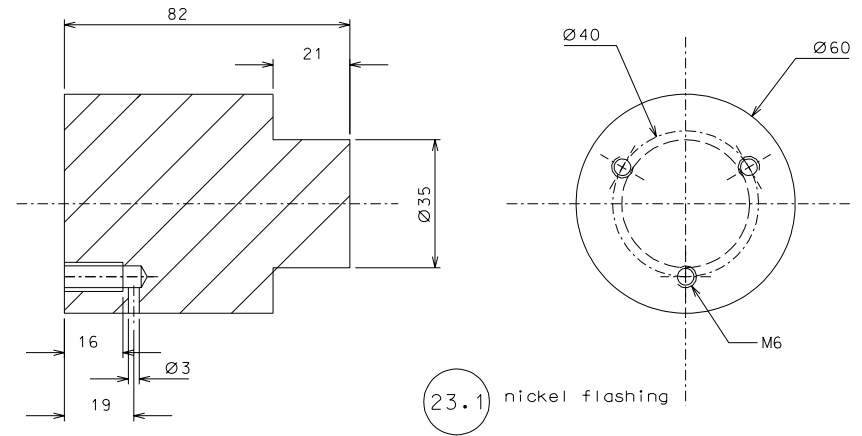
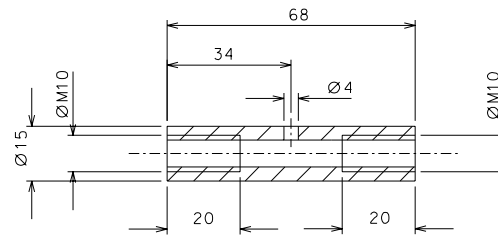


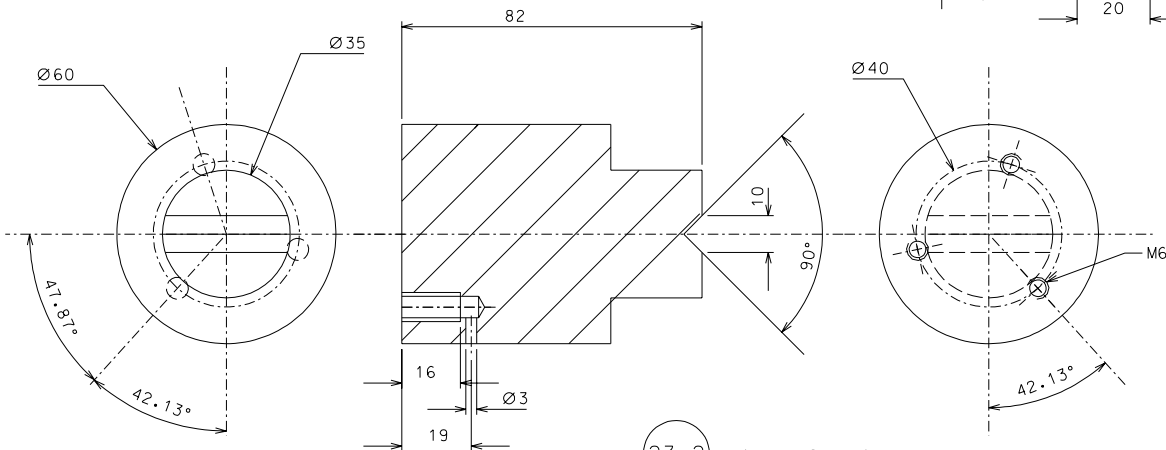
23.1 nickel flashing



23.1 nickel flashing



13



23.2 nickel flashing

taken off det. 22				5-02-06			
ref.	note			date	signature		
modifications							
23.2	1	C 40 hardened	1/1				
23.1	2	C 40 hardened	1/1				
23	1	C 40 hardened	1/1				
13	16	AISI 304	1/1				
ref.	pieces	mat. and treatments	scale	ref.	pieces	mat. and treatments	scale

General machining tolerances UNI 5307-63								
Dimensions	< 6	> 6-30	> 30-120	> 120-315	> 315-1000	> 1000-2000	> 2000-4000	> 4000
linear Toli.	± 0,1	± 0,2	± 0,3	± 0,5	± 0,8	± 1,2	± 2	± 3
angular Toli.	± 1' ± 30'			± 20'				
referred to the shortest side								
designed for				R.De Salvo				
draw. by				G. Gennaro-PROMECC				
date				2-01-05		scale 1/1		
title				HAM-OPTICAL BENCH				
DETAILS FILTER				LIGO-D051122-01-D				
data ¹ from				106		A 2		