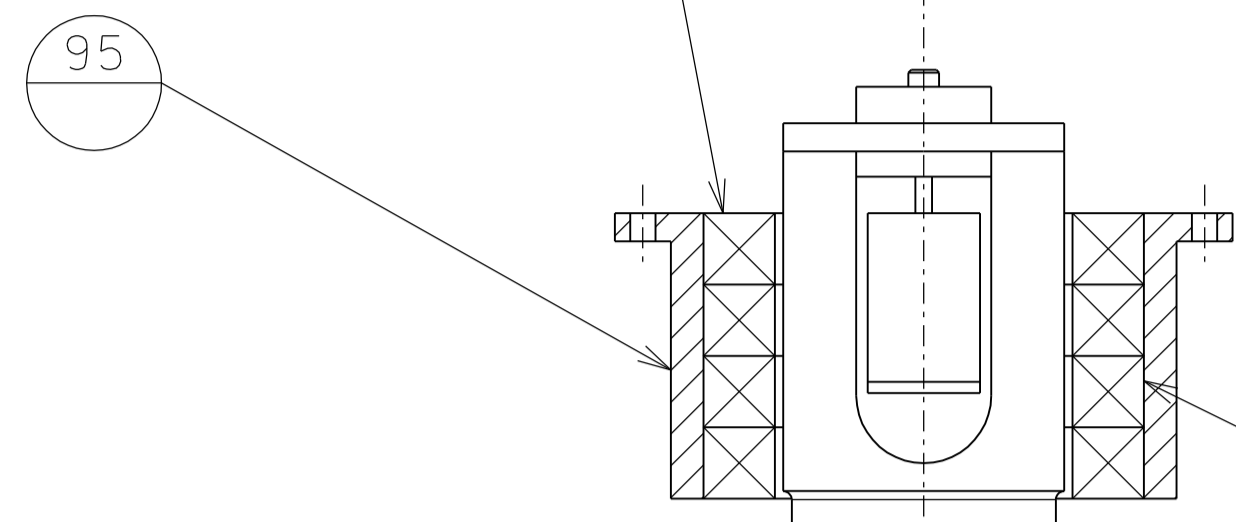
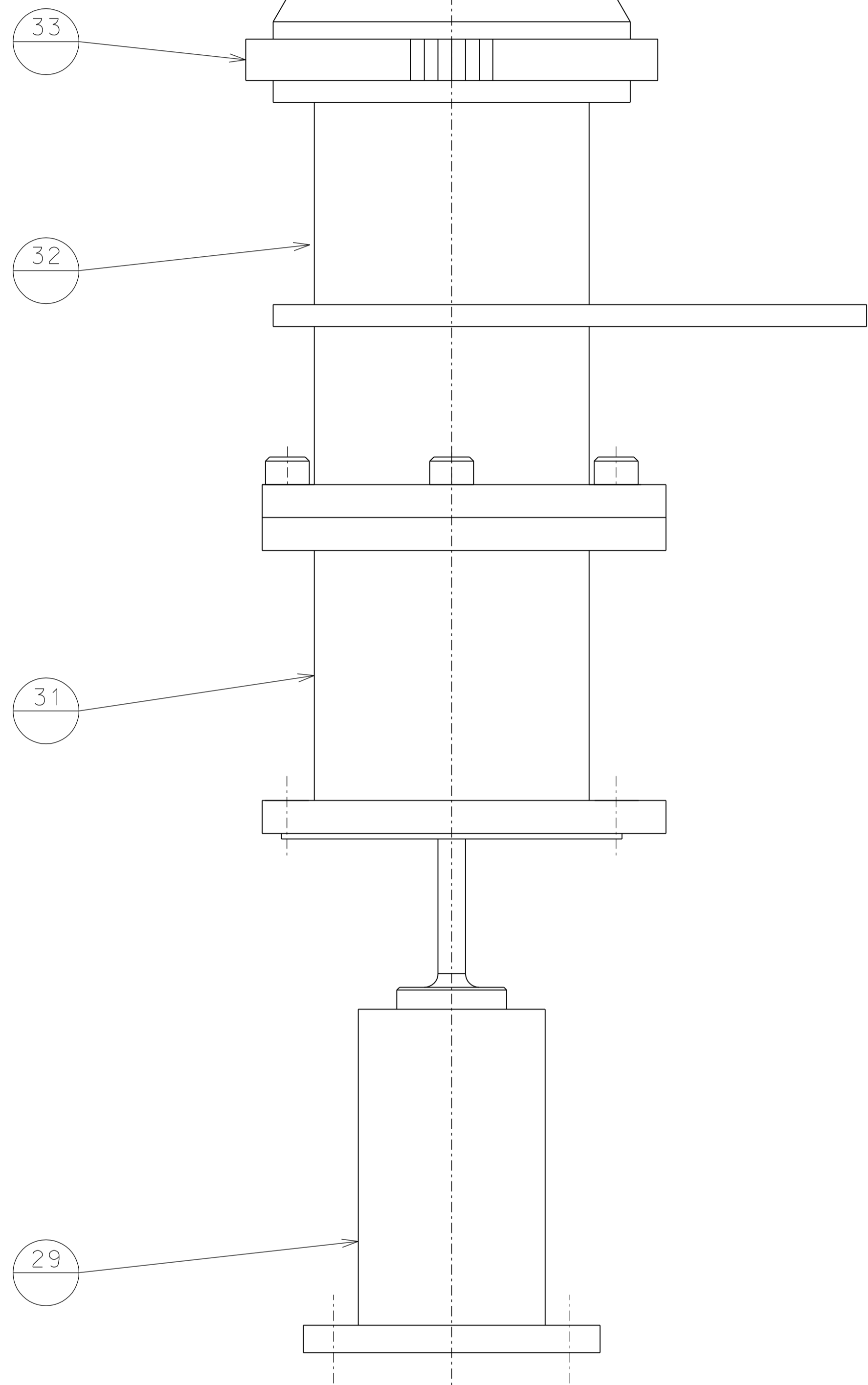


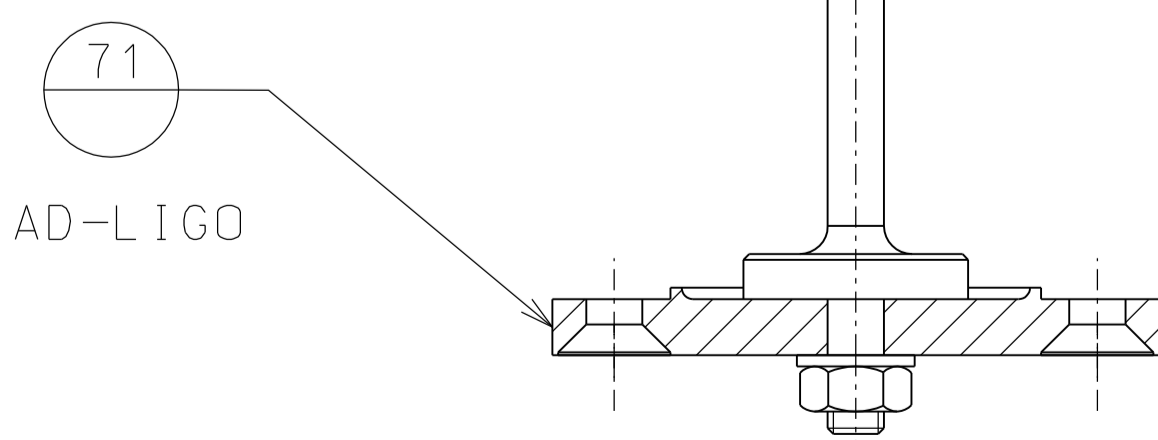
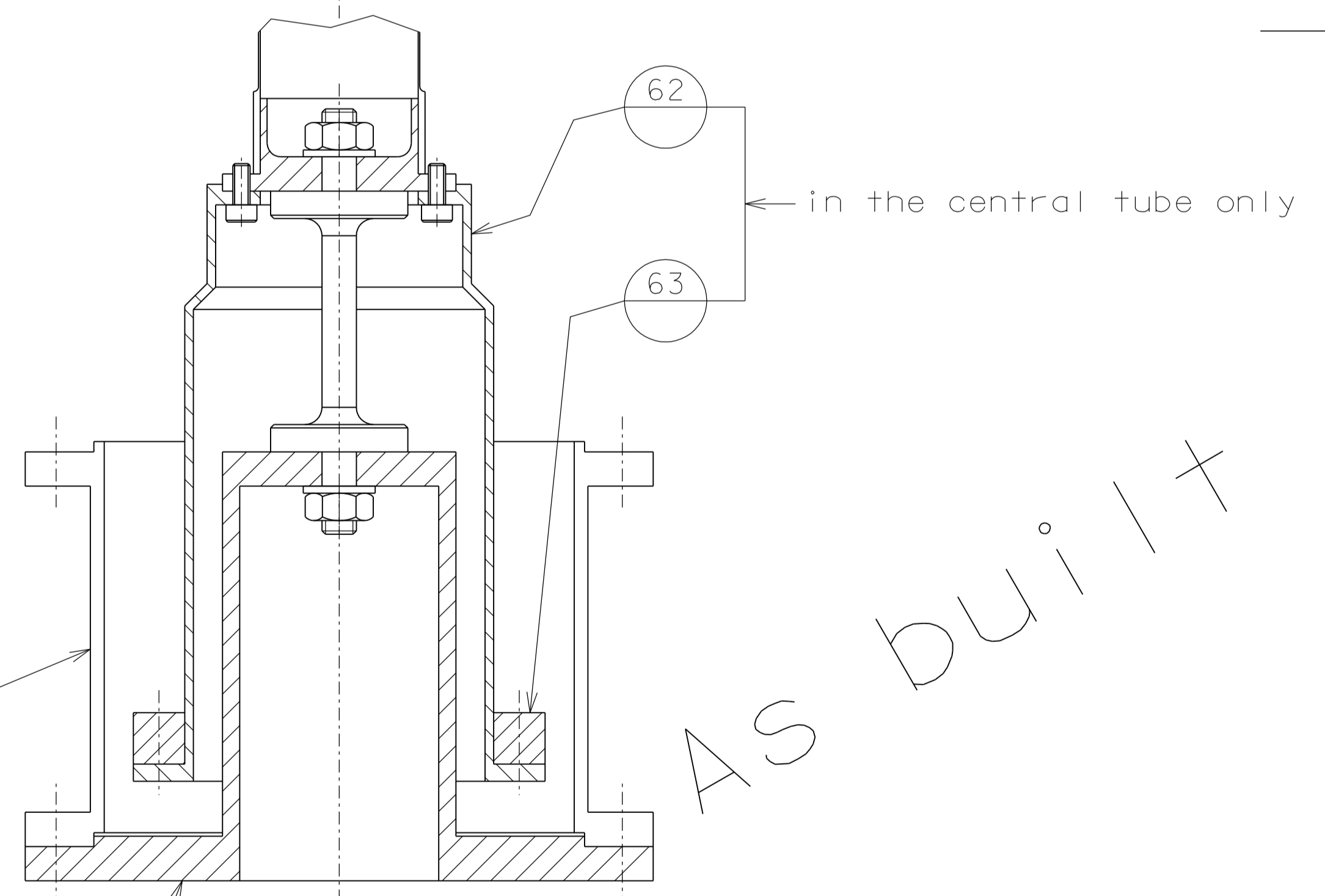
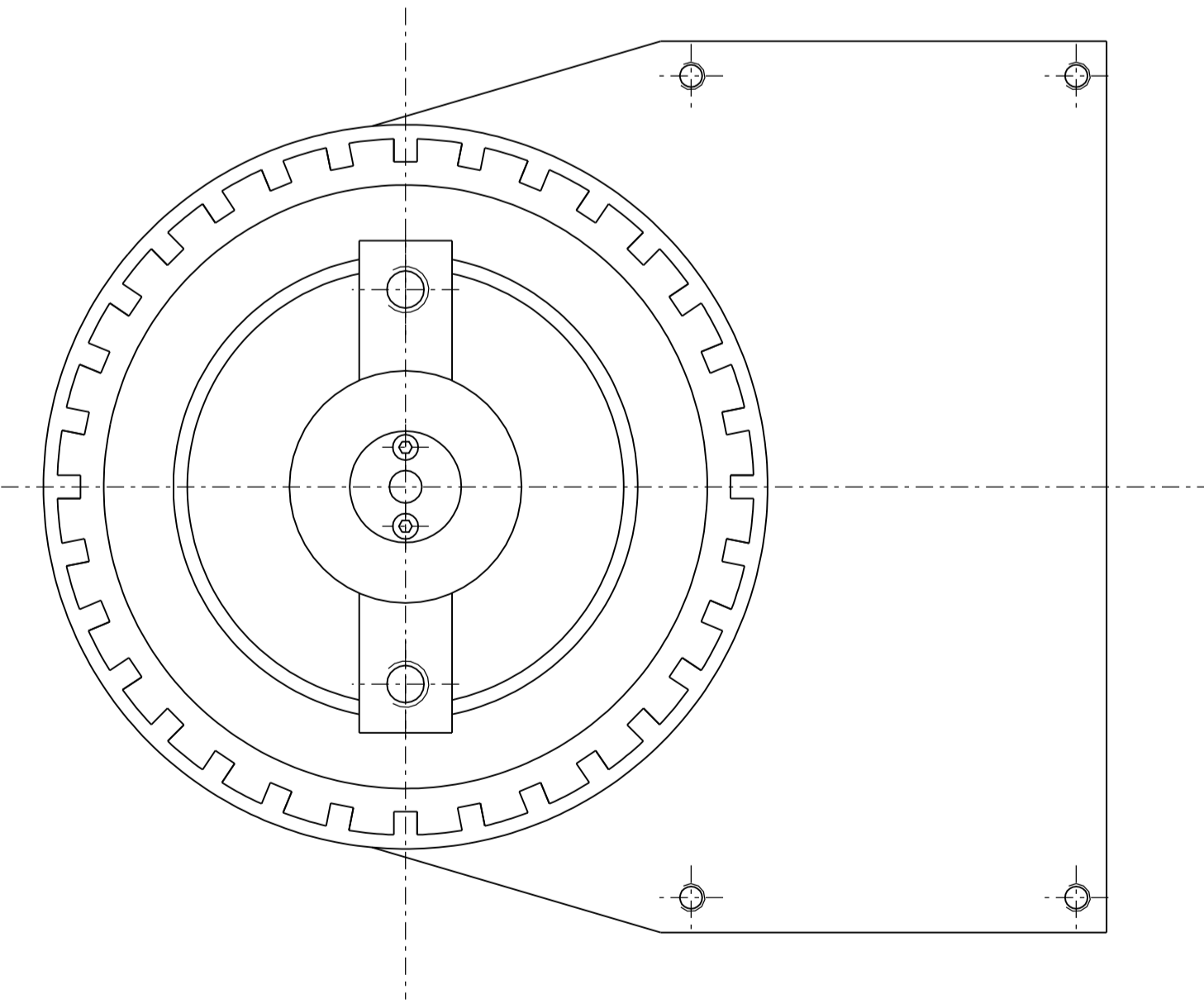
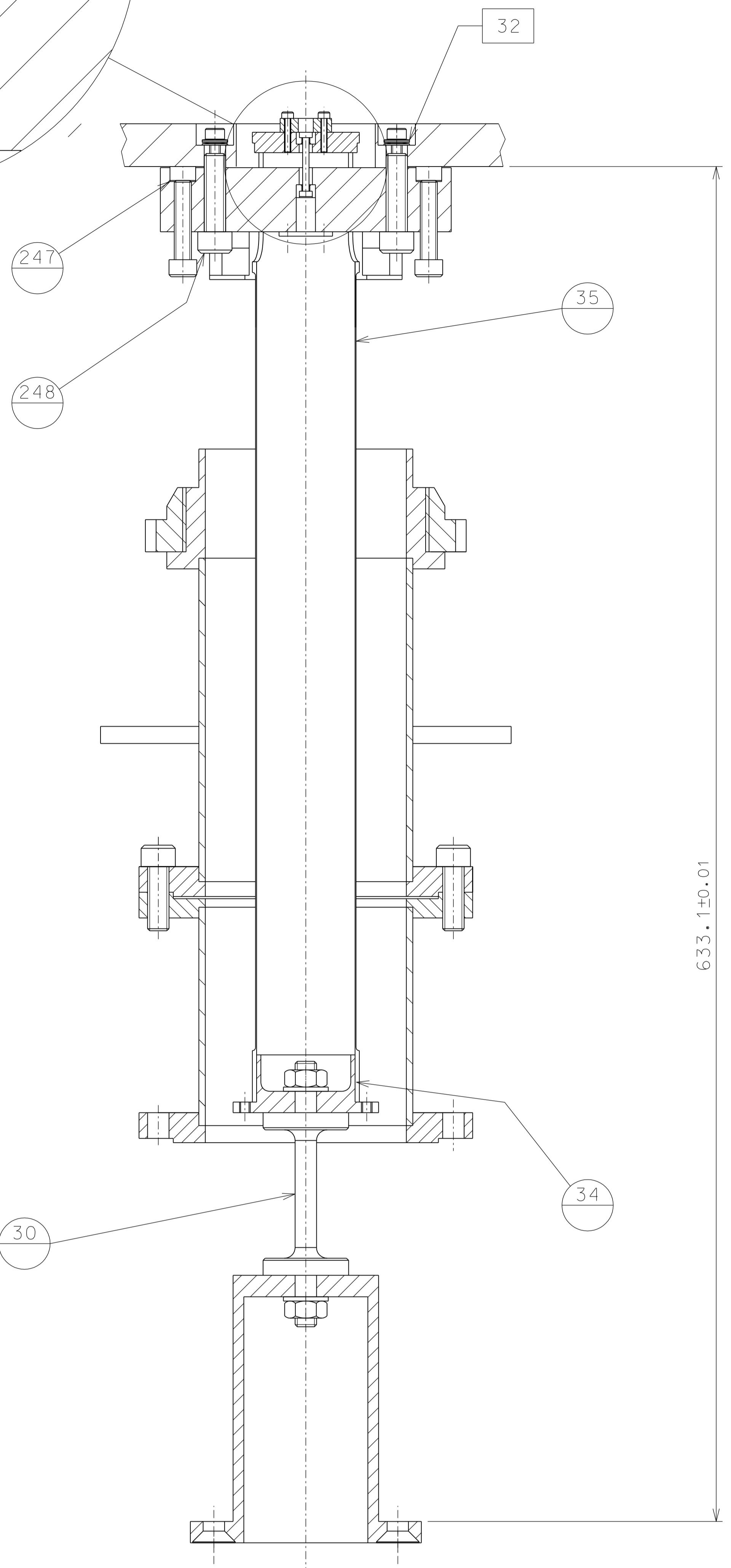
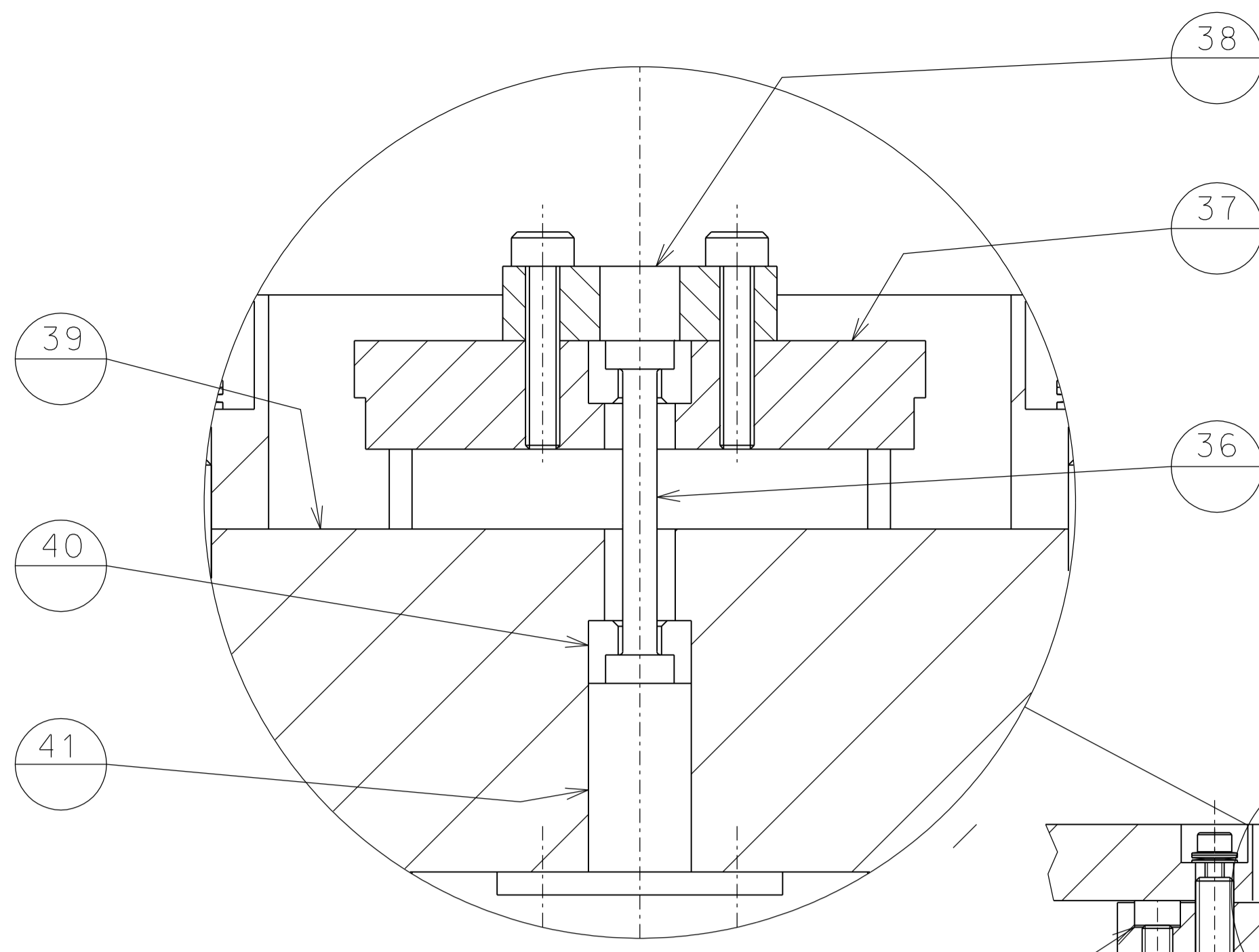
magnets ID 1/2"x1/2" n°32



bunting magnetics N35P500500-SH  
32 magnets per damper  
maximum baking temperature 145°C



LIGO-I



ref.	draw.	type	n°piec.
39-2		tommy head M10x35	8
38-37		tommy head M3x12 (S)	8
39-41		tommy head M4x12	8
31-32		tommy head M10x25 (S)	16
1-31		tommy head M10x30	16
1-29		tommy head M10x30	16
detail		type	n°piec.
Screw's table			

NOTE-1: The details 93 and 30 must be aligned and slip fit with the details 71, 67, 29  
The mass of individual parts must be weighted and recorded.

The length of this assembly must be checked, and if necessary adjusted, to make legs of equal length within 0.1 mm.

NOTE-2: As built modification in the LASTI prototype only

ref.	note	date	signature
	changed name of magnets	27-11-06	
	modified thickness part 39	10-09-06	
	modified part 39	17-08-06	
	fitted head screw in the bottom	03-07-06	
modifications			
39	137 small flex joint base pl.	248	137 drilled screw
38	137 1/2 cup retainer	247	137 guided disc
37	137 top leg disk	95	154 magnets support
36	137 small flex joint	94	154 magnets separator
35	136 IP leg	71	138 Adv.LIGO flex joint base
34	137 flex joint connector	67	135 flex joint base
33	138 maint.locking screw	66	135 Adv-LIGO ext. spool
32	138 safety tube	63	136 C. weight
31	136 LIGO-I safety tube ext.	62	136 c. weight bell
30	135 main flex joint	41	137 disk
29	135 LIGO-I flex joint base	40	137 1/2 cups
ref.	draw.	added legend	ref. draw. added legend

<b>LIGO PROJECT</b>		designed for <b>R.De Salvo</b>
draw. by <b>C.Gennaro-PRMEC</b>		date 26-12-04
title <b>HAM-OPTICAL TABLE</b>		LIGO-D051107-06-D
INVERTED PENDULUM GR.2		scale 1/2 A 1