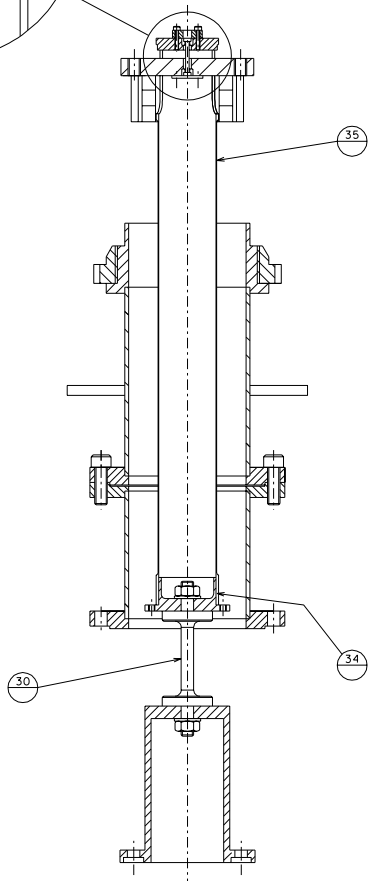
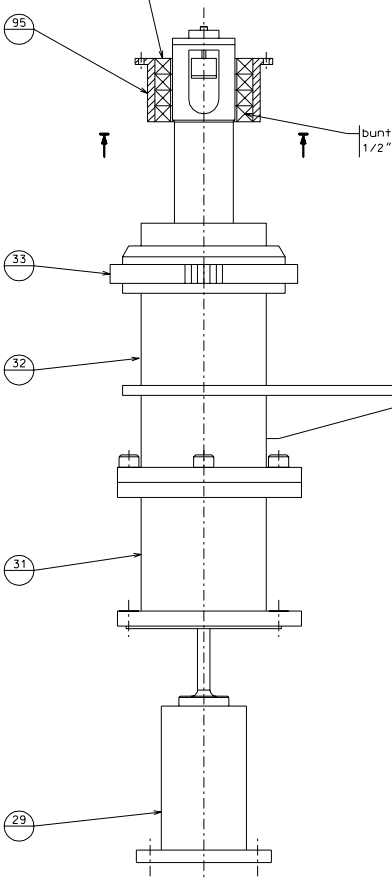
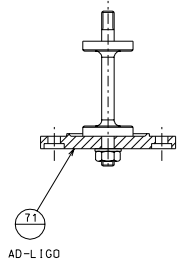
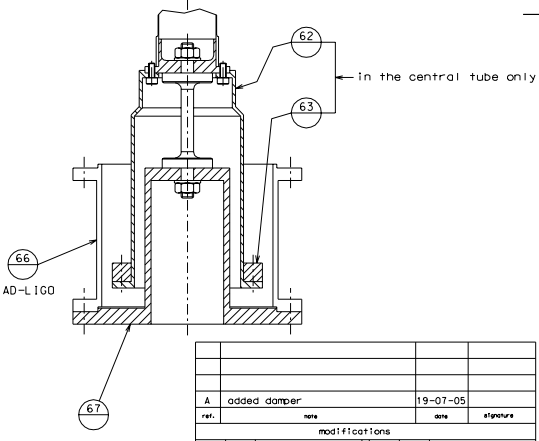
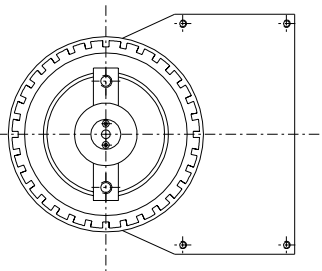


magnets ID 1/2"x1/2" n°32

bunting magnets NEP 3054 NP
1/2" diameter, 1/2" height



LIGO-I



AD-L160

part no.	description	quantity
39-2	tommy head M10x35	8
38-37	tommy head M5x12 (S)	8
39-41	tommy head M4x12	8
31-32	tommy head M10x25 (S)	16
1-31	tommy head M10x30	16
1-29	tommy head M10x30	16
detail	type	n°piec.

Screw's table

ref.	date	signature
A	19-07-05	
modifications		
39	137	small flex joint base pl.
38	137	1/2 cup retainer
37	137	top leg disk
36	137	small flex joint
35	136	IP leg
34	137	flex joint connector
33	138	main locking screw
32	138	safety tube
31	136	L160-1 safety tube ext.
30	135	main flex joint
29	135	L160-1 flex joint base
95	154	magnets support
94	154	magnets separator
71	138	Adv-L100 flex joint base
67	135	flex joint base
66	135	Adv-L160 ext. spool
63	136	C. weight
62	136	C. weight bell
41	137	disk
40	137	1/2 cups
ref.	draw.	added remark
ref.	draw.	added remark

NOTE: The details 93 and 30 must be aligned and slip fit with the details 71, 67, 29

LIGO PROJECT
 designed by: R.De Salvo
 drawn by: G.Gennaro-PROMECC
 date: 26-12-04
 HAM-OPTICAL TABLE
 INVERTED PENDULUM GR.2
 LIGO-0051107-00-D
 scale: 1/2
 A 1