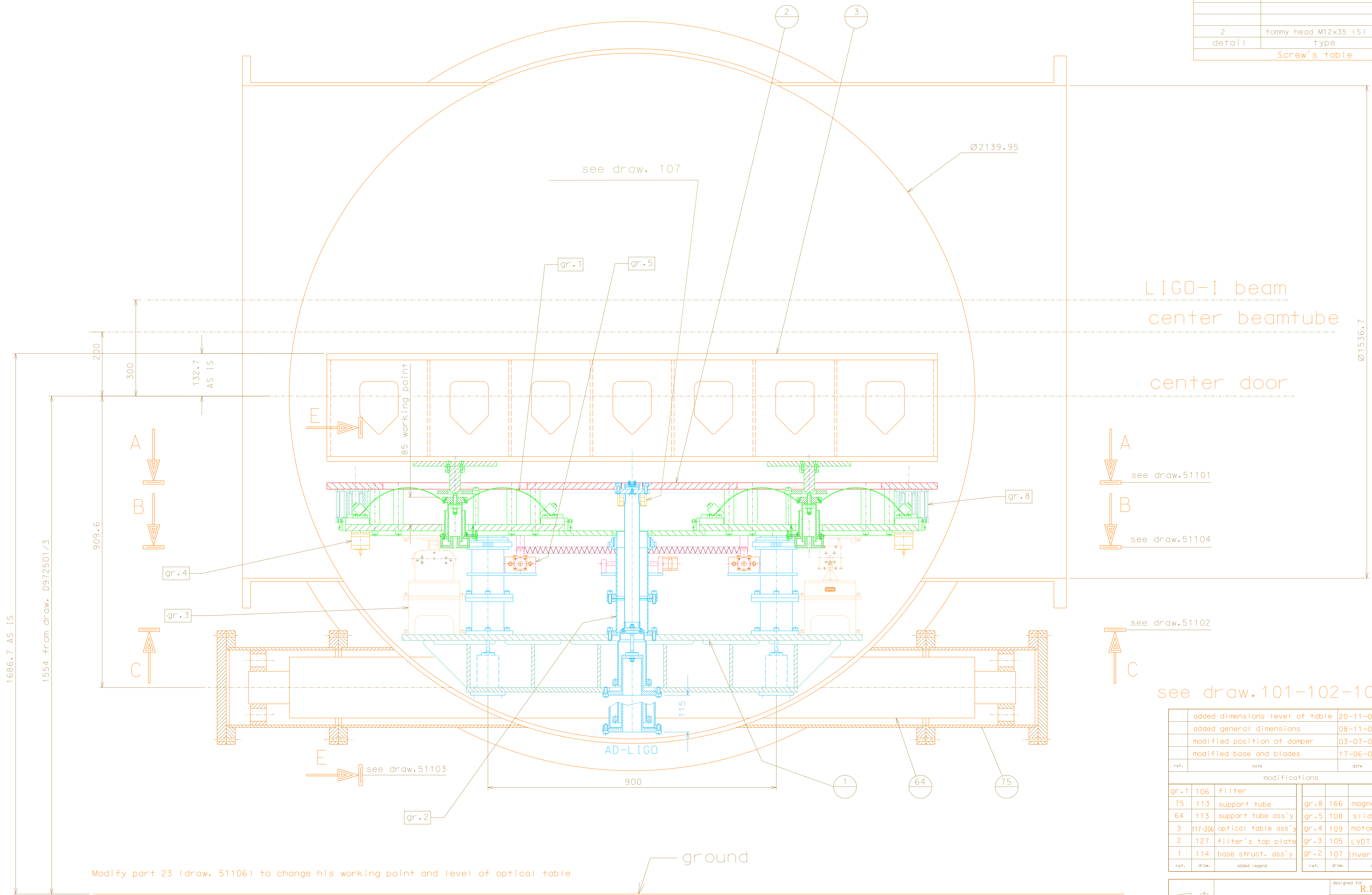


2	tommy head M12x35 (S)	64
detail	type	n°piec.
Screw's table		



LIGO-I beam  
center beamtube

center door

A  
see draw.51101  
B  
see draw.51104

see draw.51102

C

see draw.101-102-103-104

added dimensions level of table	20-11-06
added general dimensions	08-11-06
modified position of damper	03-07-06
modified base and blades	17-06-06

ref.	note	date	signature
modifications			
gr.1	106	filter	
75	113	support tube	gr.8 166 magnetic damper
64	113	support tube ass'y	gr.5 108 slide
3	117-206	optical table ass'y	gr.4 109 motorized spring
2	127	filter's top plate	gr.3 105 LVDT-actuator
1	114	base struct. ass'y	gr.2 107 Inverted Pendulum
ref.	draw.	added legend	ref. draw. added legend

	<b>LIGO PROJECT</b>		designed for <b>R.De Salvo</b>
			draw. by <b>G. Gennaro-PROMEC</b>
		date <b>26-12-04</b>	LIGO-D051100-06-D
title <b>HAM-OPTICAL BENCH</b>		scale <b>1/6</b>	
SECTION D-D			A 1

Modify part 23 (draw. 51106) to change his working point and level of optical table

ground