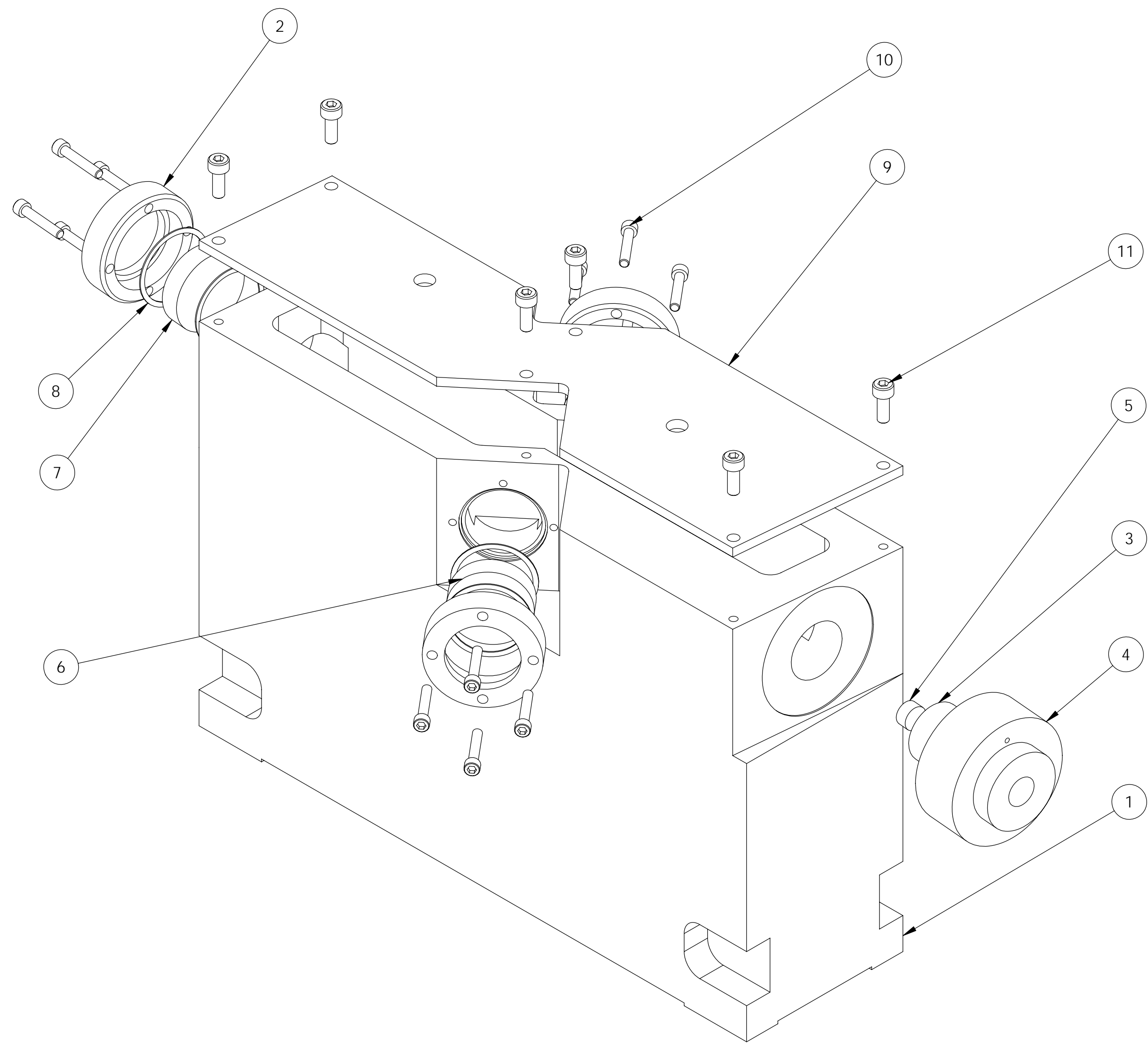


REV.	DATE	DCN #	DRAWING TREE #
A	10/18/05	E050270-00	
B	12/9/05	E050334-00	
C	12/13/05	E050336-00	



ITEM NO	REQ.	SPARE	TOT.	PART NUMBER	DESCRIPTION	MATERIAL
11	6	0	6	92196A145	6-32 X 0.313 SHCS	18-8 SS
10	12	0	12	92196A112	4-40 x 0.625 SHCS	18-8 SS
9	1	0	1	D050370	COVER OMC	copper
8	6	0	6	D050367	AG WASHER OMC	Sterling silver
7	1	1	2	D050378	1in HRmirror	fused silica
6	2	1	3	D050377	1in COUPLING-MIRROR	fused silica
5	1	1	2	D050376	7.7MM_MIRROR	fused silica
4	1	0	1	D050371	PZT END CAP OMC	copper
3	1	0	1	D050375	PZT	PZT
2	3	0	3	D050366	BEZEL OMC	copper
1	1	0	1	D050369	BODY OMC	copper

NOTES: (UNLESS OTHERWISE SPECIFIED)

- DO NOT SCALE FROM DRAWING.
- REMOVE ALL SHARP EDGES.
R0.2 MIN.
- ALL MACHINING FLUIDS SHALL BE WATER SOLUBLE AND FREE OF SULFUR, CHLORINE AND SILICONE, SUCH AS CINCINNATI MILACRON'S CIMTECH 410 (STAINLESS STEEL)
- SCRIBE, ENGRAVE OR STAMP DRAWING PART NUMBER, REVISION ON NOTED SURFACE OF PART AND THEN A THREE DIGIT SERIAL NUMBER. SERIAL NUMBERS START AT 001 FOR THE FIRST PART AND PROCEED CONSECUTIVELY. USE .07" HIGH CHARACTERS. A VIBRATORY TOOL MAY BE USED. EXAMPLE: D020188-00 SN 001

DIMENSIONS ARE IN INCHES
TOLERANCES:
.XX ± 0.01
.XXX ± 0.005
ANGULAR ± 0.5 °

FINISH
-- μ inch

NAME	DATE
M. R. Smith	10/18/05

DRAWN
CHECKED
APPROVED

SCALE: 1:4 **PROJECTION:** **SHEET 1 OF 1**

**CALIFORNIA INSTITUTE OF TECHNOLOGY
MASSACHUSETTS INSTITUTE OF TECHNOLOGY**

SYSTEM 40METER
SUB-SYSTEM OMC
NEXT ASSY

PART NAME
OUTPUT MODECLEANER ASSY

SIZE C **DWG. NO.** D050379-C **REV.** C