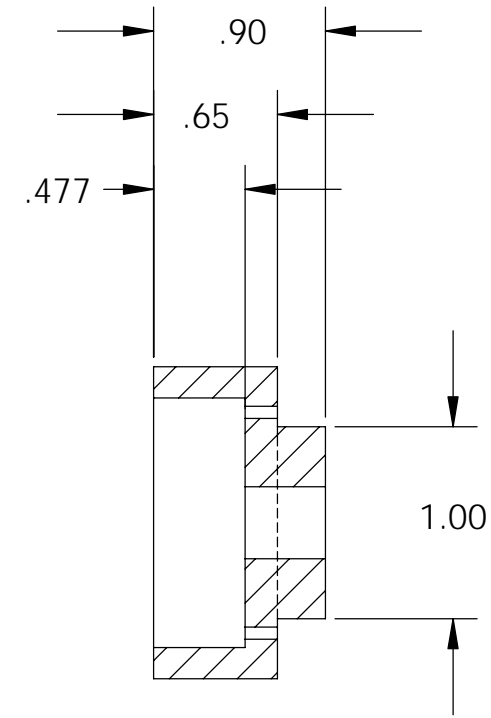
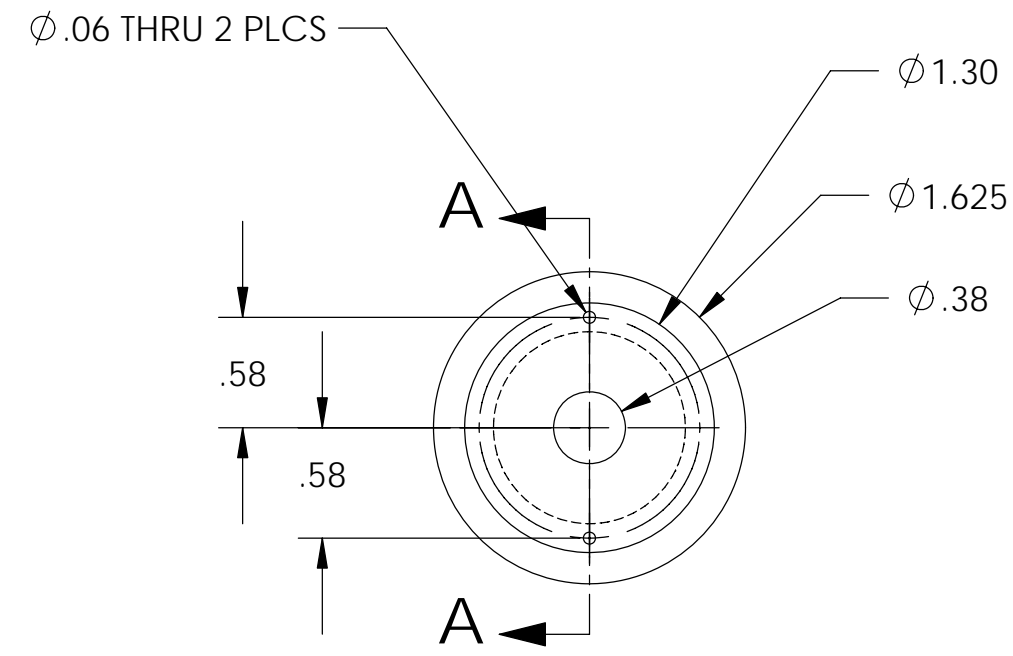
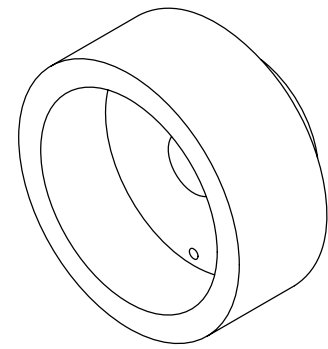


REV.	DATE	DCN #	DRAWING TREE #
A	10/18/05	E050270-00	



SECTION A-A

PARTS LIST			
NOTES: (UNLESS OTHERWISE SPECIFIED) 1. DO NOT SCALE FROM DRAWING. 2. REMOVE ALL SHARP EDGES, R.02 MIN. 3. ALL MACHINING FLUIDS SHALL BE WATER SOLUBLE AND FREE OF SULFUR, CHLORINE AND SILICONE, SUCH AS CINCINNATI MILACRON'S CIMTECH 410 (STAINLESS STEEL)		DIMENSIONS ARE IN INCHES TOLERANCES: .XX ± 0.01 .XXX ± 0.005 ANGULAR ± 0.5 °	
④ SCRIBE, ENGRAVE OR STAMP DRAWING PART NUMBER, REVISION ON NOTED SURFACE OF PART AND THEN A THREE DIGIT SERIAL NUMBER. SERIAL NUMBERS START AT 001 FOR THE FIRST PART AND PROCEED CONSECUTIVELY. USE .07" HIGH CHARACTERS. A VIBRATORY TOOL MAY BE USED. EXAMPLE: D020188-00 SN 001		MATERIAL copper	
		FINISH 64 μ inch	
		SYSTEM 40 METER	
		SUB-SYSTEM OMC	
		NEXT ASSY	
		PART NAME PZT END CAP OMC	
DRAWN M. R. Smith 10/12/05		SIZE B DWG. NO. D050371-A	
CHECKED APPROVED		REV. A	
SCALE: 1:1		PROJECTION: SHEET 1 OF 1	