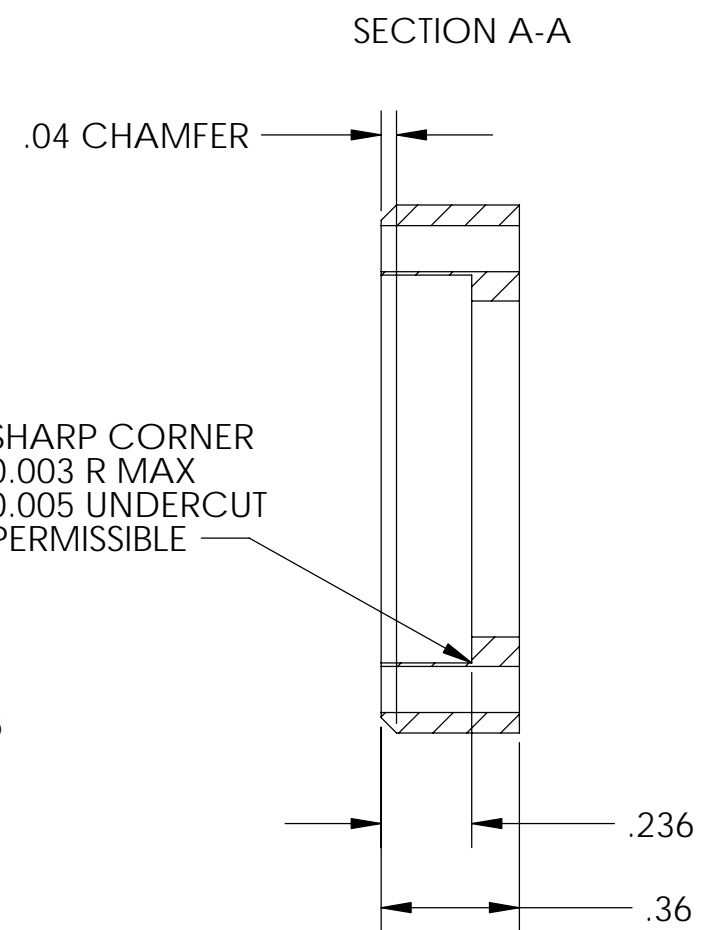
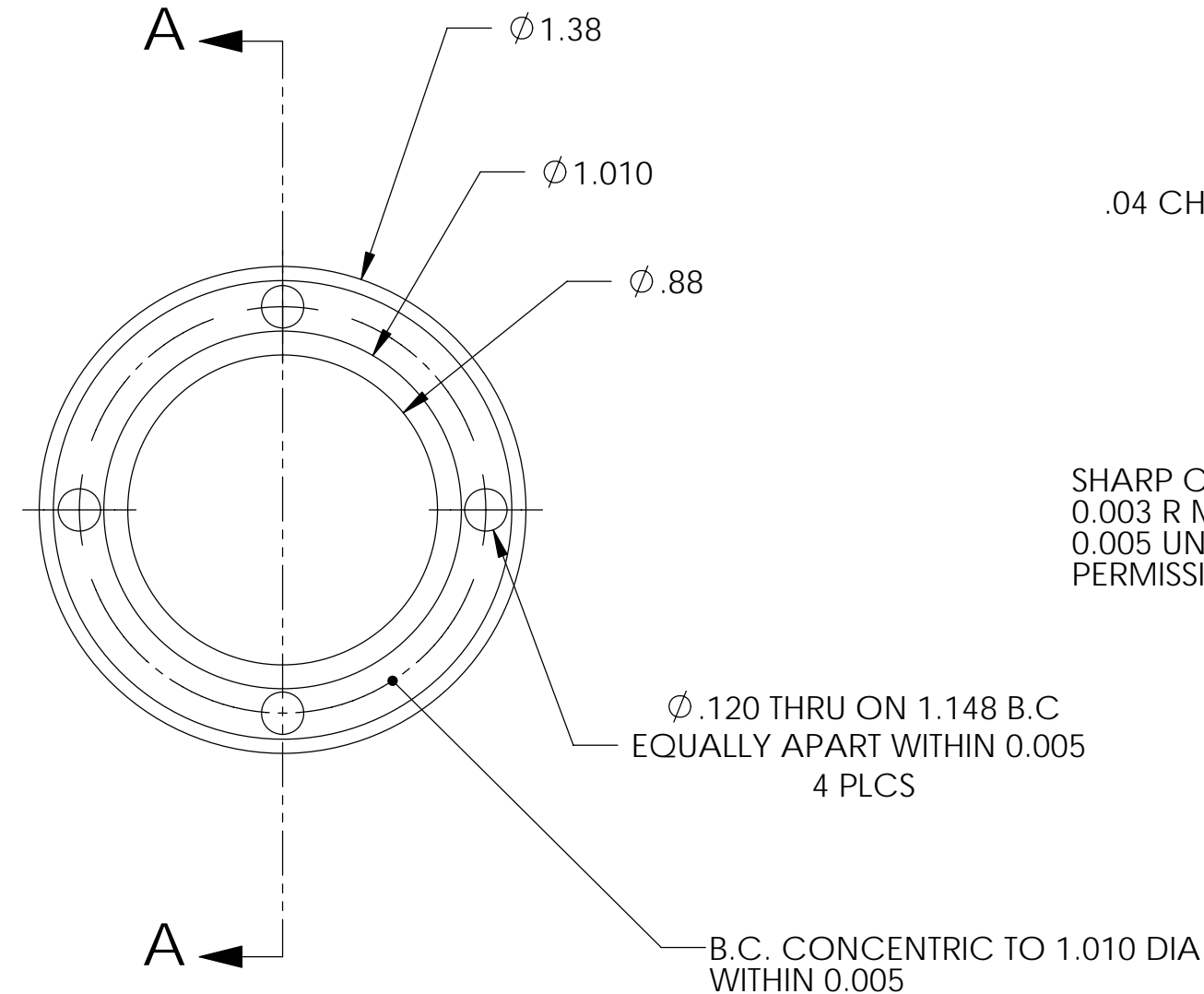
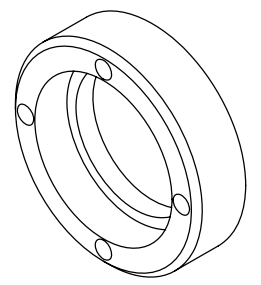


REV.	DATE	DCN #	DRAWING TREE #
A	10/18/05	E050270-00	
B	12/13/05	E050336-00	



PARTS LIST			
NOTES: (UNLESS OTHERWISE SPECIFIED) 1. DO NOT SCALE FROM DRAWING. 2. REMOVE ALL SHARP EDGES, R.02 MIN. 3. ALL MACHINING FLUIDS SHALL BE WATER SOLUBLE AND FREE OF SULFUR, CHLORINE AND SILICONE, SUCH AS CINCINNATI MILACRON'S CIMTECH 410 (STAINLESS STEEL)		DIMENSIONS ARE IN INCHES TOLERANCES: .XX ± 0.01 .XXX ± 0.005 ANGULAR ± 0.5 °	
		CALIFORNIA INSTITUTE OF TECHNOLOGY MASSACHUSETTS INSTITUTE OF TECHNOLOGY IGR, GLASGOW UNIVERSITY GEO 600 GROUP	
MATERIAL copper		SYSTEM 40 METER	
FINISH 64 µ inch		SUB-SYSTEM OMC	
DRAWN M. R. Smith 10-11-05 CHECKED APPROVED		NEXT ASSY PART NAME BEZEL OMC	
SIZE B		DWG. NO. D050366	
SCALE: 1:1		PROJECTION: SHEET 1 OF 1	

8 7 6 5 4 3 2 1

D
C
B
A

D
C
B
A

8 7 6 5 4 3 2 1