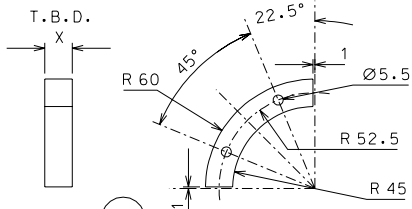
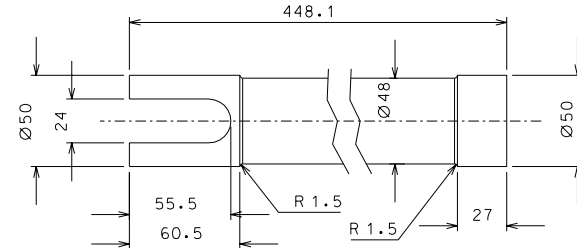
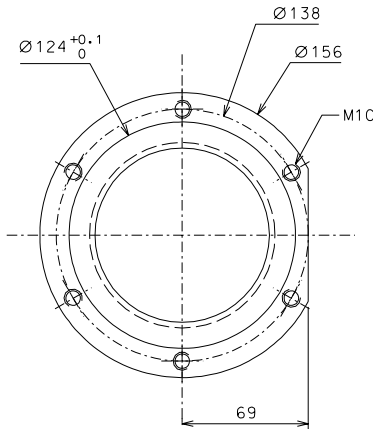
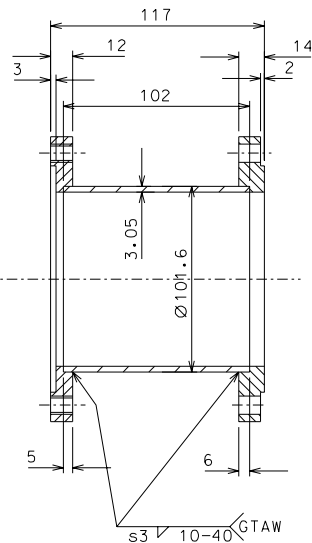
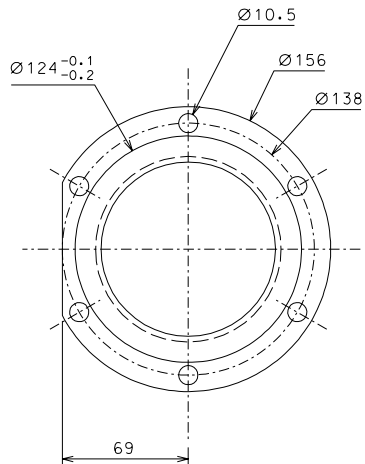


35



63



31

ref.	note	date	signature
modifications			
63	8	AISI 304	1/2
62	2	AISI 304	1/2
35	4	EN 6082	1/2
31	4	AISI 304	1/2
ref.	pieces	mat. and treatments	scale

General machining tolerances UNI 5307-63								
Dimensions	< 6	> 6-30	> 30-120	> 120-315	> 315-1000	> 1000-2000	> 2000-4000	> 4000
Linear Toli.	± 0.1	± 0.2	± 0.3	± 0.5	± 0.8	± 1.2	± 2	± 3
angular Toli.	± 1'	± 30'	± 20'	± 10' referred to the shortest side				

designed for		R.De Salvo	
draw. by		G. Gennaro-PROMECC	
date	9-01-05	scale	1/2
title		HAM-OPTICAL BENCH	
INVERTED PENDULUM		LIGO-D050136-01-D	
data ¹ from	107	A	2