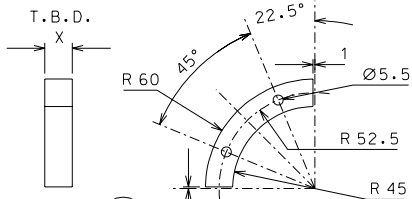
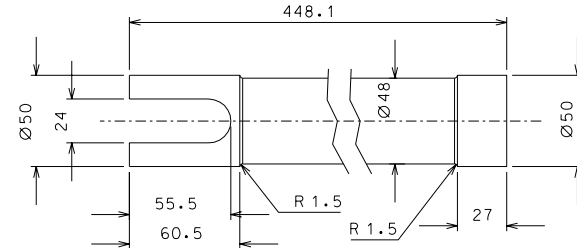
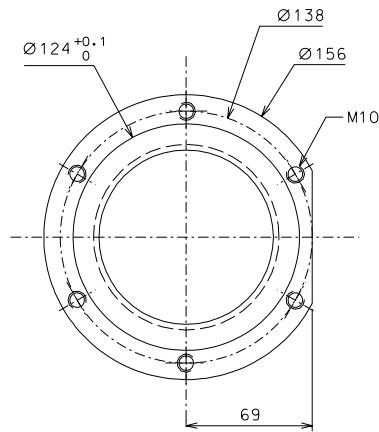
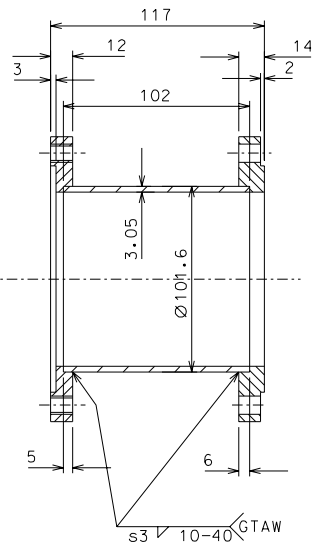
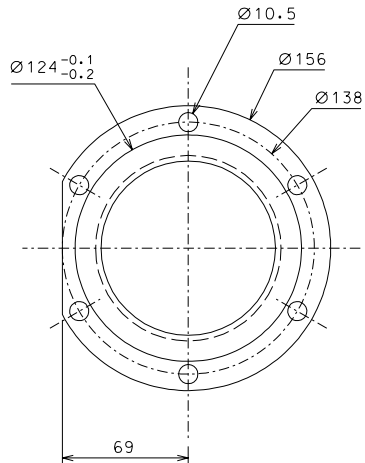


35



63



31

ref.	note	date	signature

modifications				ref. pieces mat. and treatments scale			
63	8	AISI 304	1/2				
62	2	AISI 304	1/2				
35	4	EN 6082	1/2				
31	4	AISI 304	1/2				

General machining tolerances UNI 5307-63								
Dimensions	< 6	> 6-30	> 30-120	> 120-315	> 315-1000	> 1000-2000	> 2000-4000	> 4000
Linear Toli.	± 0.1	± 0.2	± 0.3	± 0.5	± 0.8	± 1.2	± 2	± 3
angular Toli.	± 1'	± 30'	± 20'	± 10' referred to the shortest side				

designed for	R.De Salvo		
draw. by	G. Gennaro-PROMECC		
date	9-01-05	scale	1/2
title	HAM-OPTICAL BENCH		
data ¹ from	107	scale	A 2
INVERTED PENDULUM			