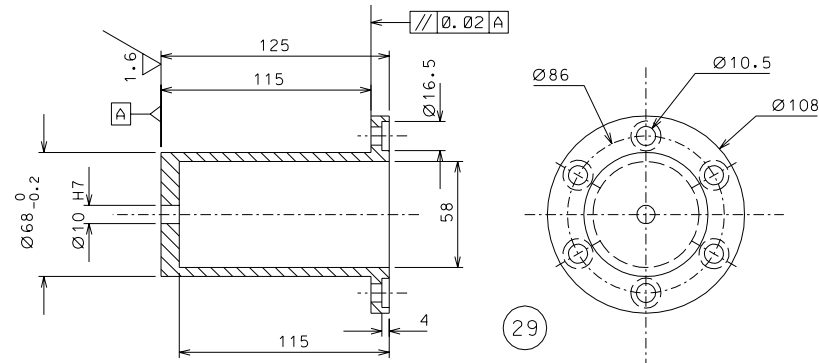
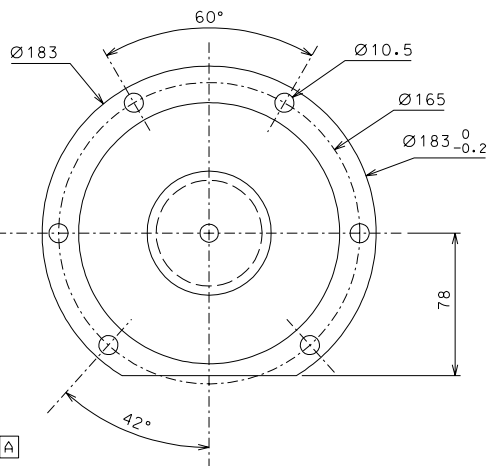
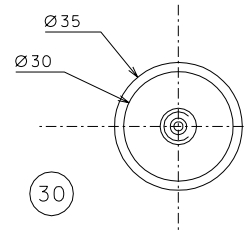


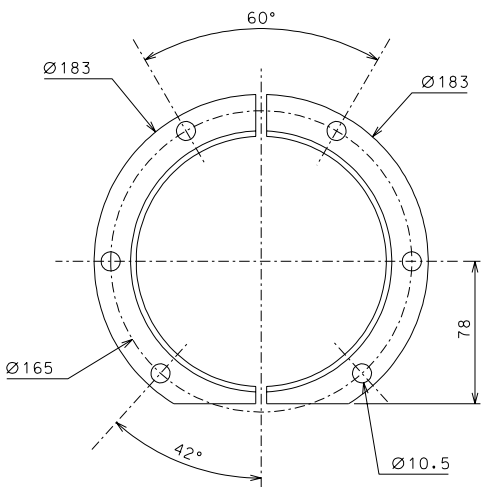
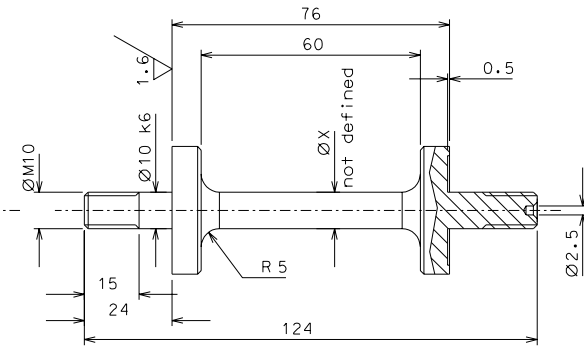
67



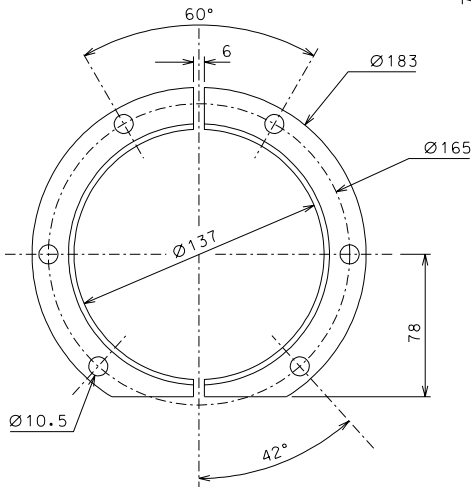
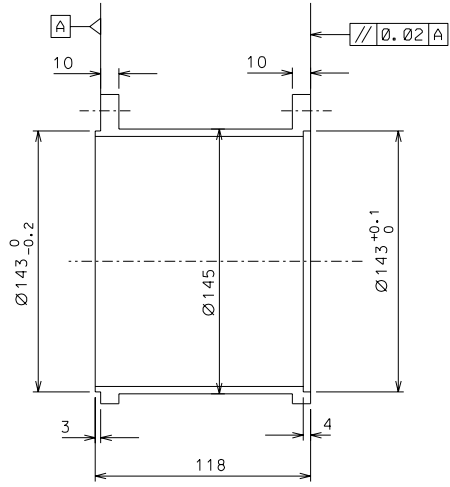
29



30



66



ref.	note	date	signature
modifications			
67	2	AISI 304	1/2
66	2	AISI 304	1/2
30	4	maraging	1/1
29	2	AISI 304	1/2
ref.	pieces	mat. and treatments	scale

General machining tolerances UNI 5307-63				
Dimensions	< 6	> 6-30	> 30-120	> 120-315
Linear Toli.	± 0.1	± 0.2	± 0.3	± 0.5
angular Toli.	± 1'	± 30'	± 20'	± 10'

referred to the shortest side

designed for	R.De Salvo		
draw. by	G. Gennaro-PROMECC		
date	8-01-05	scale	1/2
title	HAM-OPTICAL BENCH		
	INVERTED PENDULUM		
date <sup>1</sup> from	107	A	2