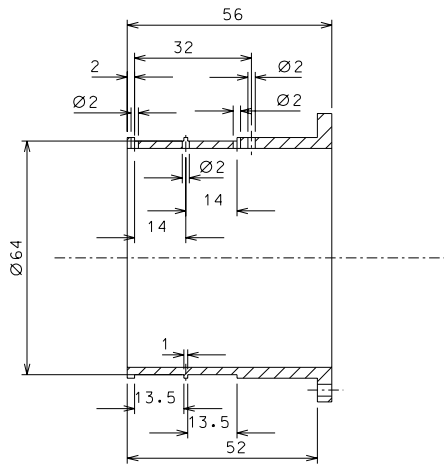
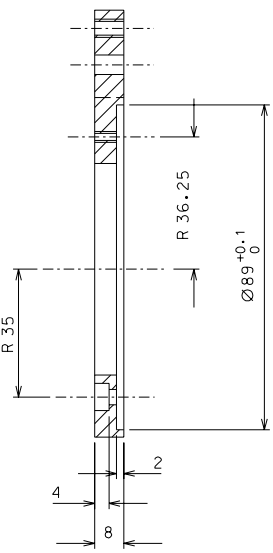
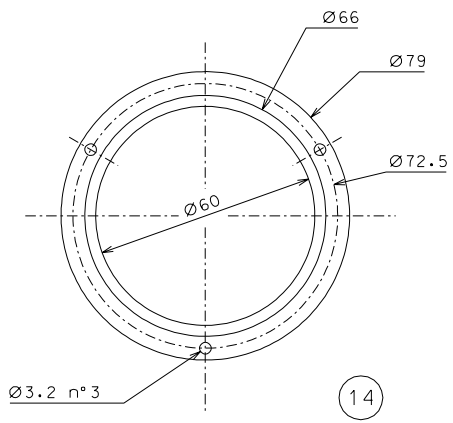
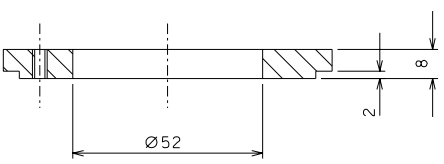
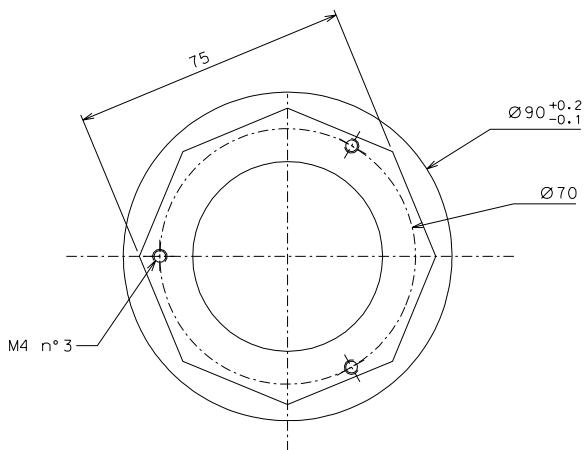


18



15



14

secondary coil: wire 41-AWG size 100 turns for coil.

Use only kapton insulated wires approved by LIGO, all other kinds of enamel are forbidden.

ref.	note	date	signature
modifications			
18	4	AISI 304	1/1
15	4	ARMCO steel	1/1
14	4	peek 1000	1/1
ref.	pieces	mat. and treatments	scale

General machining tolerances UNI 5307-63						
Dimensions	< 6	6-30	30-120	120-315	315-1000	>1000-2000
Linear Toli.	± 0.1	± 0.2	± 0.3	± 0.5	± 0.8	± 1.2
angular Toli.	± 1'	± 30'	± 20'	± 10'		

designed for		R.De Salvo	
draw. by		G. Gennaro-PROMECC	
date	2-01-05	scale	1/1
title		HAM-OPTICAL BENCH	
DETAILS FILTER		LIGO-D050125-01-D	
detail from	106	A 2	