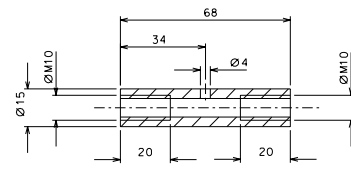
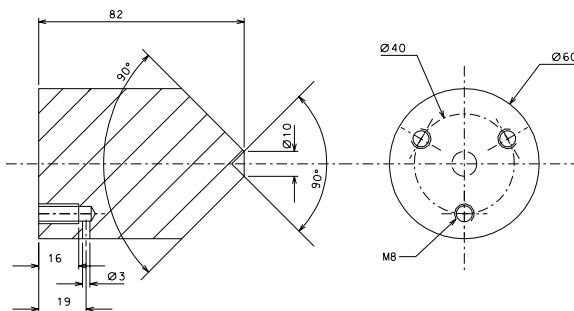


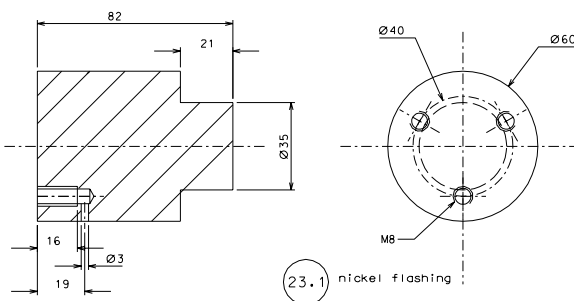
22

23
nickel flashing

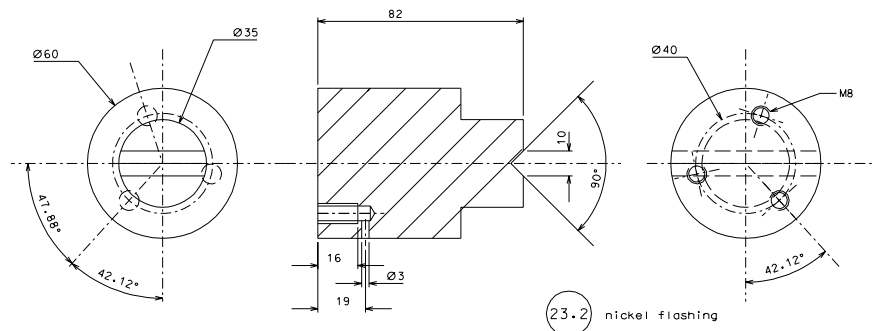


13

23.1 nickel flashing



23.2 nickel flashing



rev.	date	signature	
modifications			
23.2	1	C 40 hardened	1/1
23.1	2	C 40 hardened	1/1
23	1	C 40 hardened	1/1
22	4	EN 5083 H111	1/1
13	16	AISI 304	1/1

ref.	plac.	rev.	and	treatment	date

General machining tolerances UNI 5307-63

Dimensione	< 6	6-10	10-120	120-315	315-1000	1000-2000	2000-4000	> 4000
linear form.	±0.1	±0.2	±0.3	±0.5	±0.8	±1.2	±2	±3
angular form.	±1'	±30'	±20'	±10'	refered to the nearest side			

designed by **R.De Salvo**
 G. Gennaro-PROMECH
 date: 2-01-05 scale: 1/1

title: **HAM-OPTICAL BENCH**
 LIGO-0050122-01-D
 sheet: 106 of 1