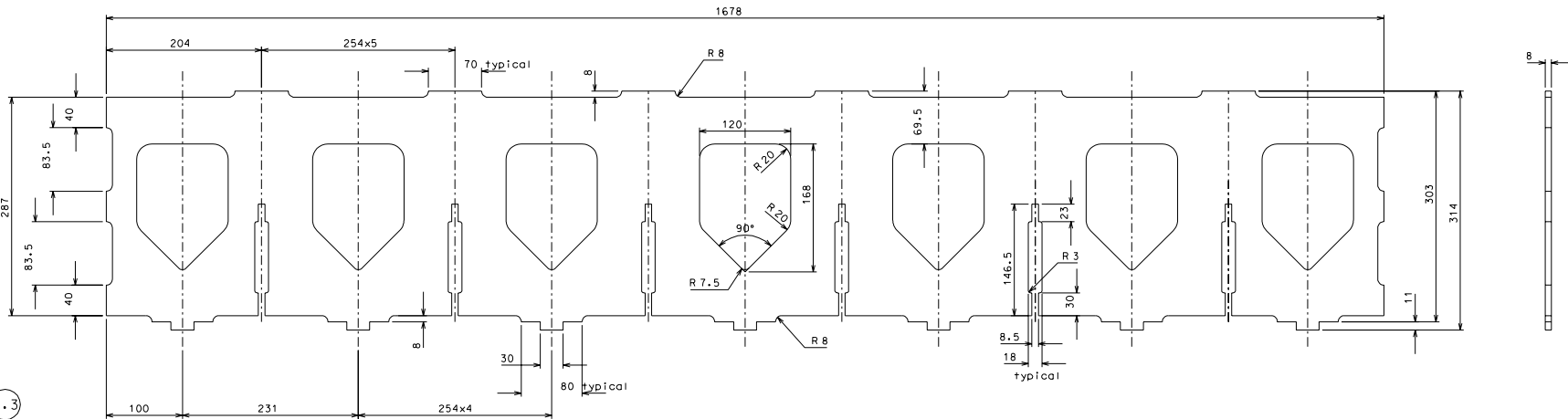


3.4

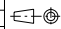


3.3

3.4	6	EN 5083 H111	1/3		
3.3	6	EN 5083 H111	1/3		
ref.	piece	mat. and treatments	serie	ref.	piece

General machining tolerances UNI 5817-85					
dimensions	< 4	4-30	30-120	> 120-315	> 315-1000
linear tol.	± 0.1	± 0.2	± 0.3	± 0.5	± 0.7
angular tol.	± 1'	± 30'	± 20'	± 10'	related to the shortest side

ref.	date	signature
modifications		


**LIGO PROJECT**  
 designed by: **R. De Salvo**  
 drawn by: **G. Gemmaro-PROMECH**  
 date: **28-12-04** scale: **1/3**  
**HAM-OPTICAL BENCH**  
 LIGO-D050119-00-D  
 sheet: **117** of **A 1**