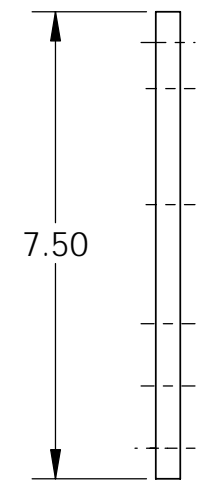
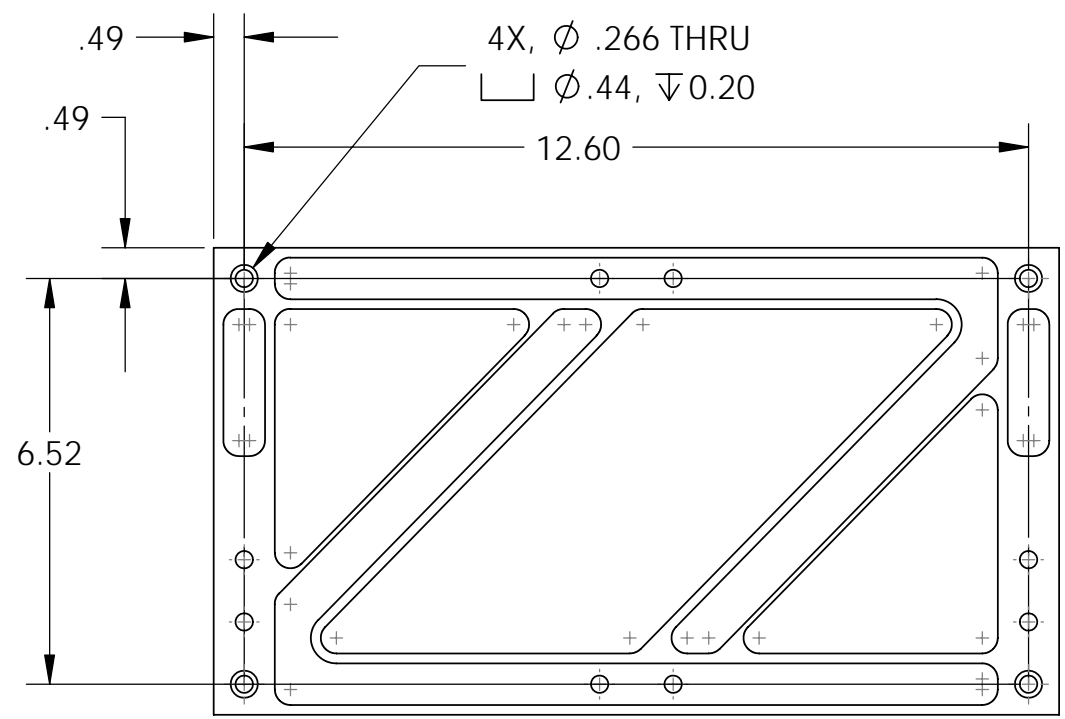
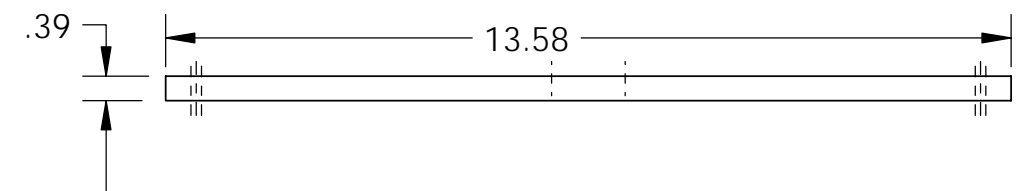
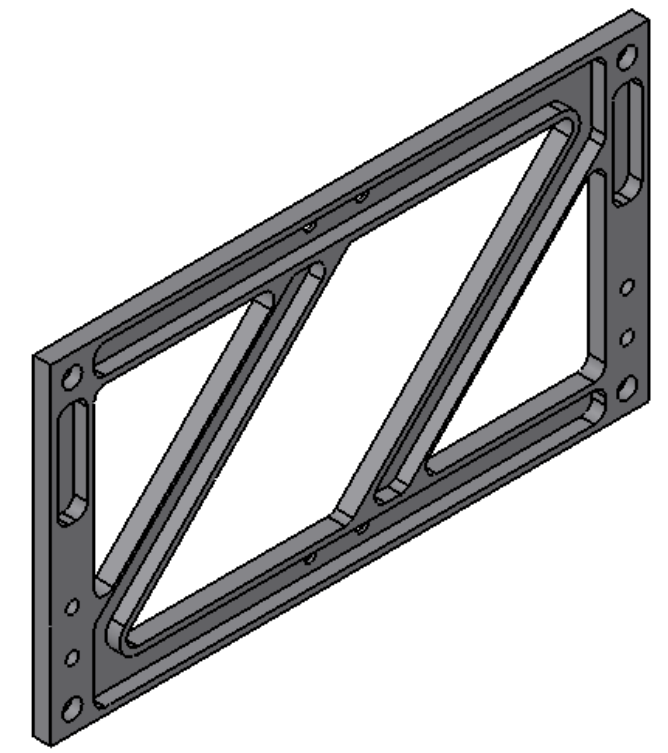
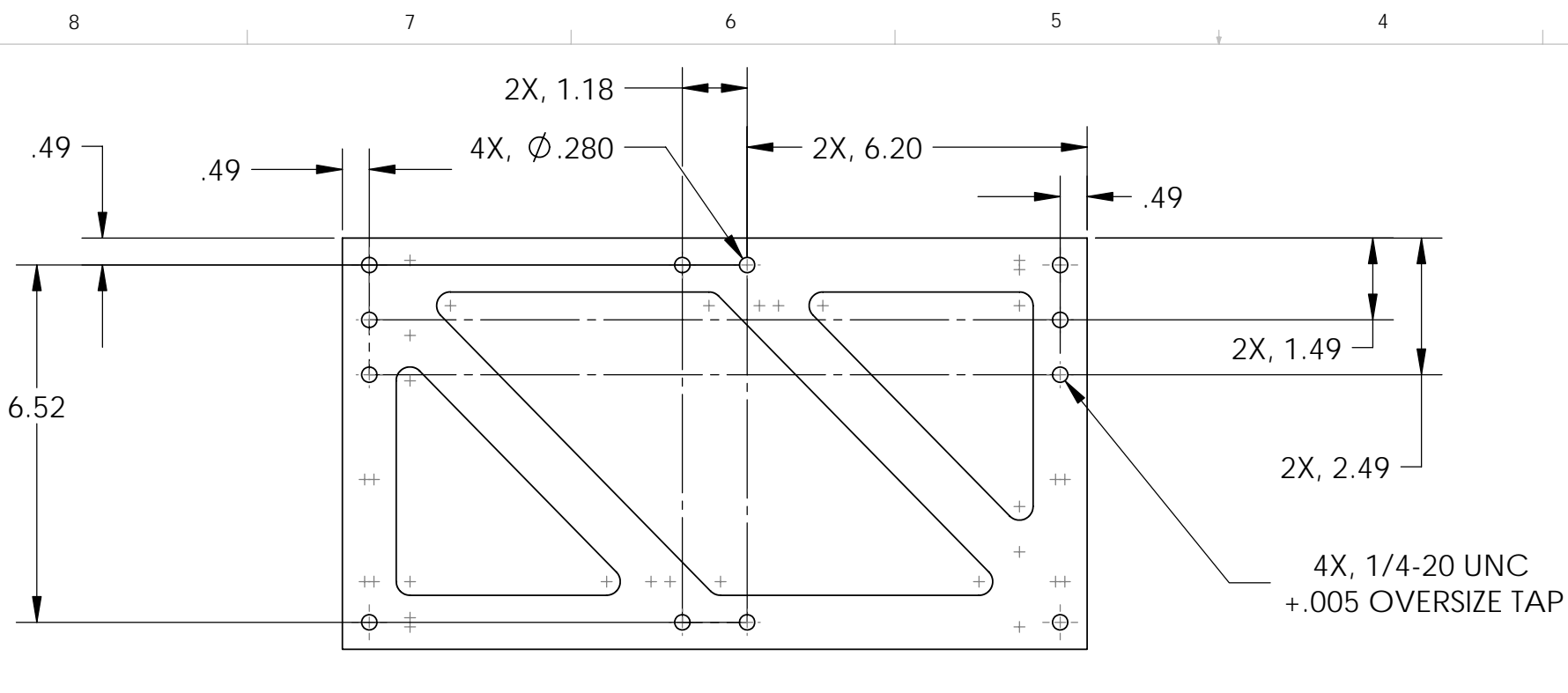


REV.	DATE	DCN #	DRAWING TREE #
A	28 MAR 2006	E060057-00	E060059-A



NOTES: (UNLESS OTHERWISE SPECIFIED)			PARTS LIST		
1. DO NOT SCALE FROM DRAWING. 2. REMOVE ALL SHARP EDGES, R.02 MIN. 3. ALL MACHINING FLUIDS SHALL BE WATER SOLUBLE AND FREE OF SULFUR, CHLORINE AND SILICONE.  ④ SCRIBE, ENGRAVE OR MECHANICALLY STAMP DRAWING (NO INKS OR DYES) PART NUMBER, REVISION ON NOTED SURFACE OF PART FOLLOWED ON THE NEXT LINE WITH A THREE DIGIT SERIAL NUMBER. SERIAL NUMBERS START AT 001 FOR THE FIRST ARTICLE AND PROCEED CONSECUTIVELY. USE .12" HIGH CHARACTERS, UNLESS THE SIZE OF THE PART DICTATES SMALL CHARACTERS. A VIBRATORY TOOL MAY BE USED. EXAMPLE: D050042-A S/N 001	DIMENSIONS ARE IN INCHES		CALIFORNIA INSTITUTE OF TECHNOLOGY MASSACHUSETTS INSTITUTE OF TECHNOLOGY IGR, GLASGOW UNIVERSITY GEO 600 GROUP		
	TOLERANCES: .XX ± 0.01 .XXX ± 0.005		SYSTEM	ADVANCED LIGO	
	ANGULAR ± 0.5°		SUB-SYSTEM	SUS	
	MATERIAL 6061-T6-AI		NEXT ASSY	LOWER STR ASSEMBLY	
FINISH 32 µ inch		PART NAME LOWER STR LONG ZED STRAPS			
DRAWN	C TORRIE	9th MAY 2005	SIZE	DWG. NO.	
DESIGNED	R JONES	9th MAY 2005	B	D050042	
CHECKED			SCALE: 1:4	PROJECTION:	
APPROVED				SHEET 1 OF 1	