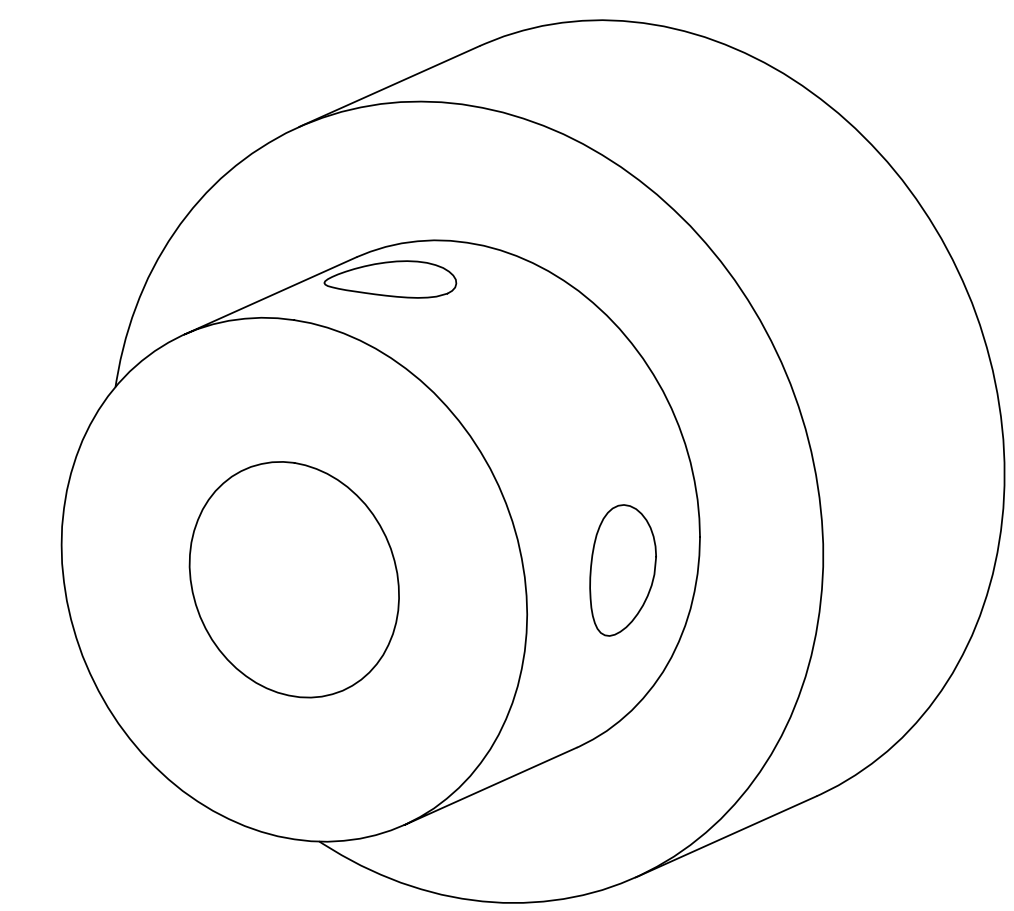
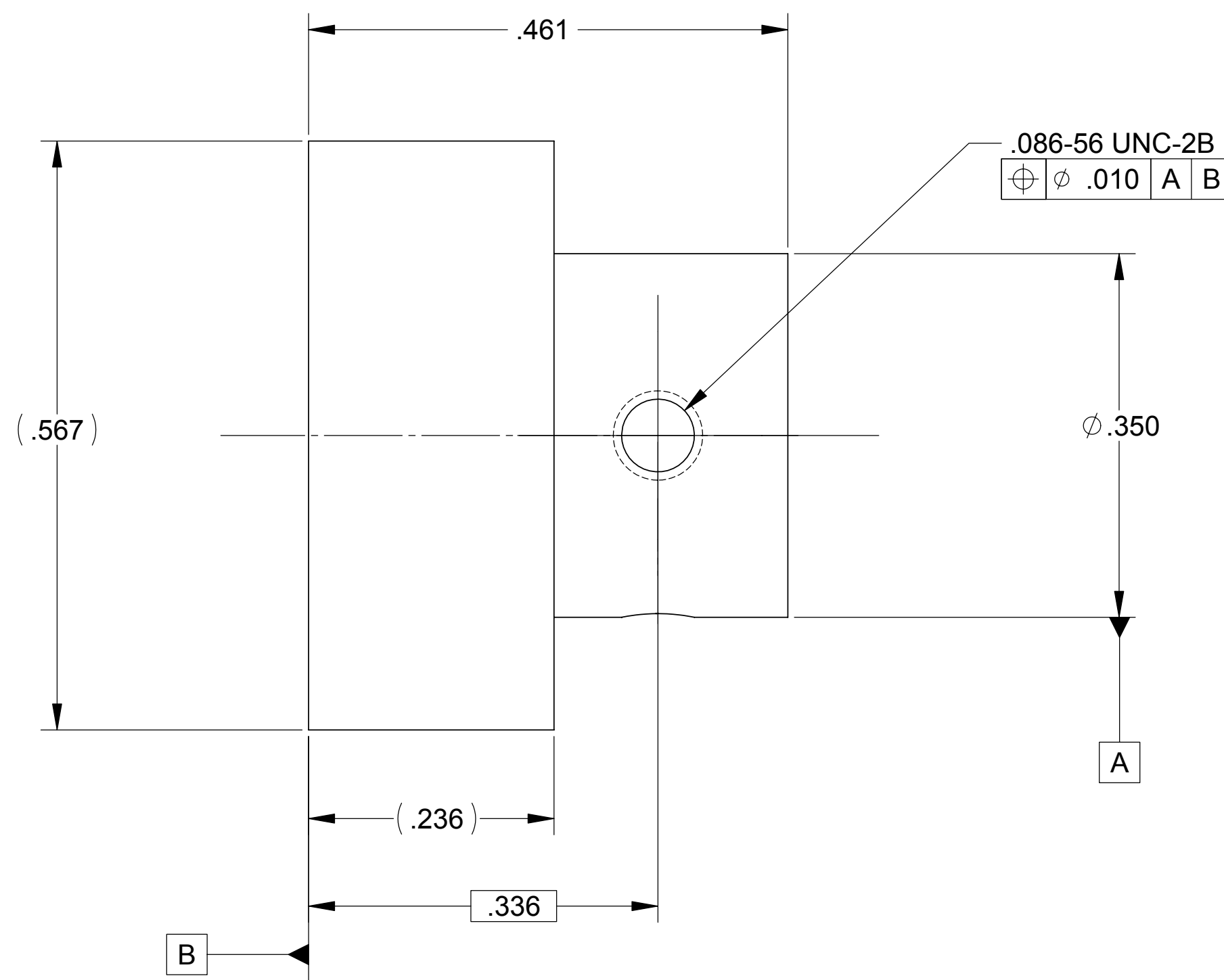
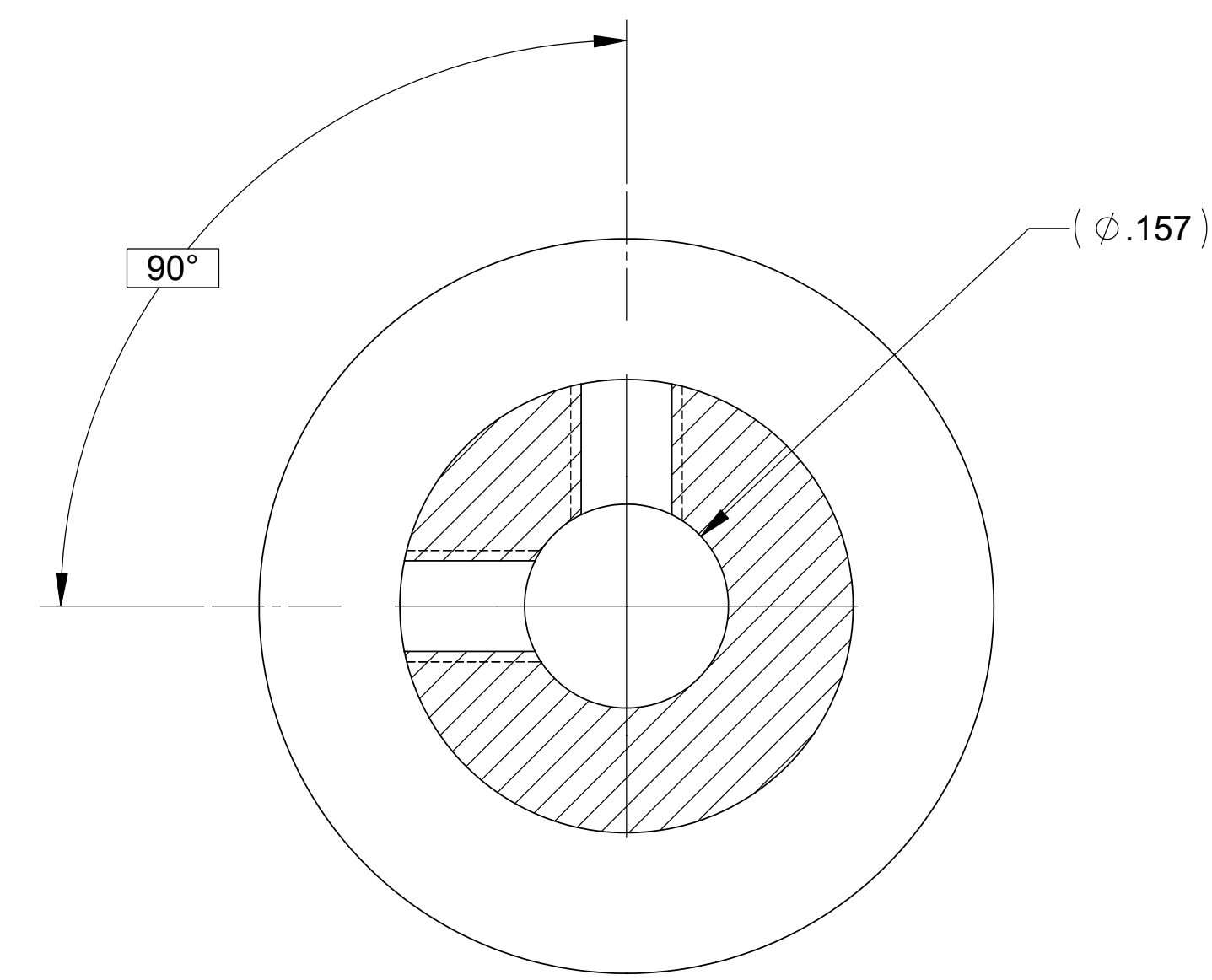
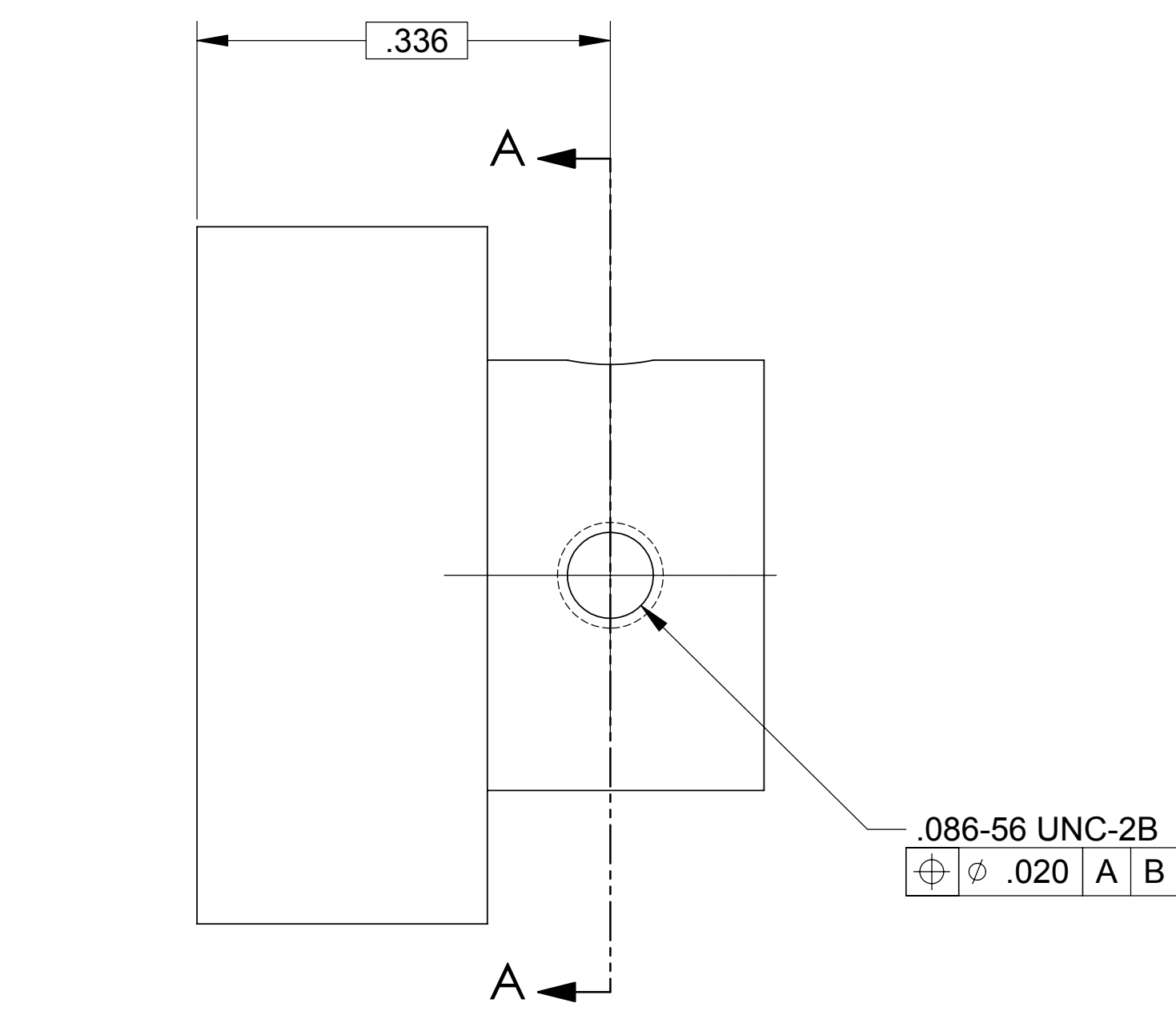


		REVISIONS																		
LTR	ZONE	DESCRIPTION								DWN	CHK	ENGR	STRESS	MATL	THRM	ME	PROJ	QA	RELEASE DATE	
A		INITIAL RELEASE																		



ISOMETRIC VIEW FOR REFERENCE ONLY



SECTION A-A

- 4. IDENTIFY WITH PART NUMBER AND S/N. BAG AND TAG.
 - 3 MAKE FROM STOCK DRIVE PART NUMBER A1Y2MY08016, 416 CRES.
 - 2. MACHINE FILLET RADII .005 - .010.
 - 1. REMOVE ALL BURRS AND SHARP EDGES .005 - .010.
- NOTES: UNLESS OTHERWISE SPECIFIED

THIS DOCUMENT MAY CONTAIN ITAR CONTROLLED INFORMATION AND/OR COMMERCE CONTROLLED INFORMATION EXPORT RESTRICTIONS MAY APPLY

FILE ATTACHMENTS
gears_sd_metric.x_t

20008591-1		PART OR IDENTIFYING NO		NOMENCLATURE OR DESCRIPTION		SPECIFICATION		MATERIAL OR NOTE		ZONE	
QTY REQD	ITEM NO	REF DES	CAGE NO	PARTS LIST							
CONTRACT NO		UNLESS OTHERWISE SPECIFIED		RELEASED 5/19/2004				ALLIANCE SPACESYSTEMS, INC. 1250 Lincoln Ave., Suite 100 Pasadena, CA 91103			
		TOLERANCES		DECIMALS .XX ±.03 .XXX ±.010 ANGLES ±1/2° MACHINE FINISH 63		DWN J. LARAMEE 04/28/04 ENGR STRS		PINION, GS-13 LOCK			
		DO NOT SCALE DRAWING INTERPRET DWG PER ASME Y14.5M		CHK NA THRM NA ME NA		MATL NA PROJ NA QA NA		SIZE D CAGE CODE 1KNU9		REV A SCALE 8:1	
20008593		1422		MATERIAL 3		20008591		SHEET 1 OF 1			
NEXT ASSEMBLY		PROJECT CODE		APPLICATION							