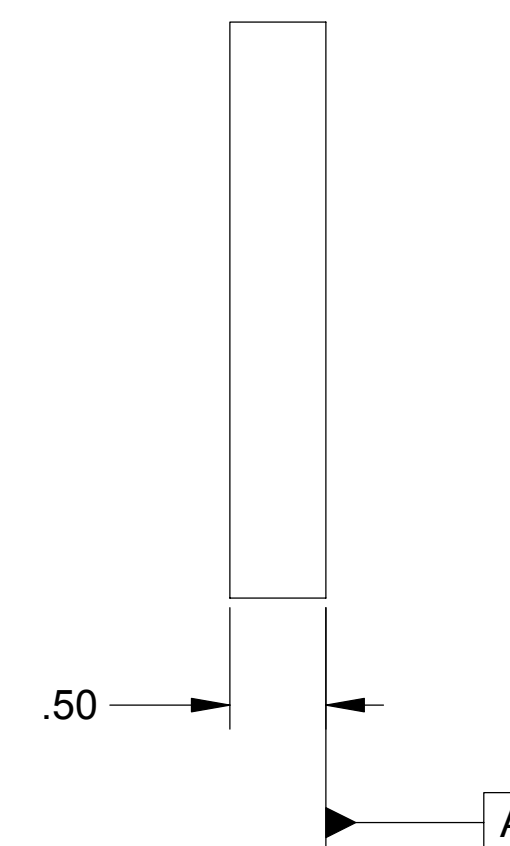
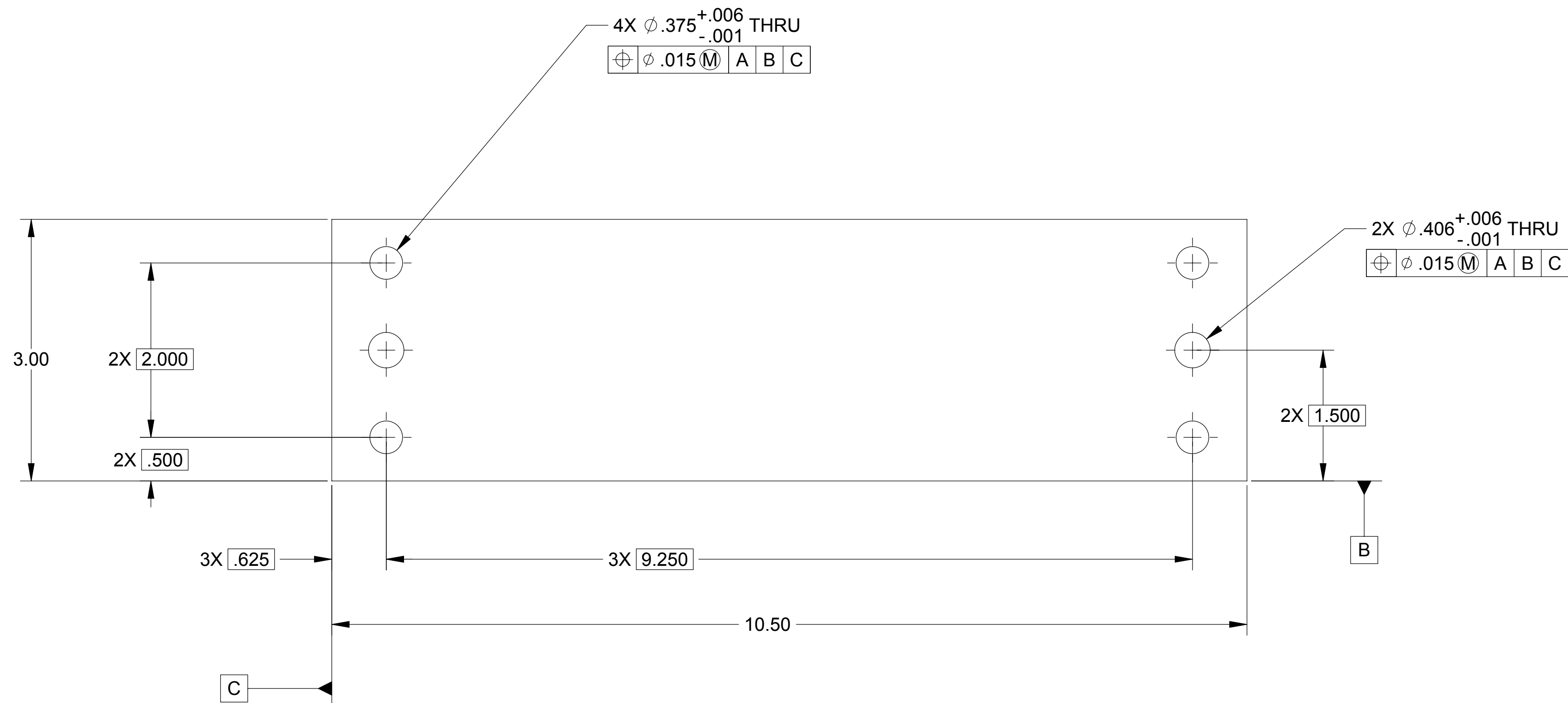


		REVISIONS																			
LTR	ZONE	DESCRIPTION									DWN	CHK	ENGR	STRESS	MATL	THRM	ME	PROJ	QA	RELEASE DATE	
A		INITIAL RELEASE																			



- NOTES: UNLESS OTHERWISE SPECIFIED.
- REMOVE ALL BURRS AND SHARP EDGES .005-.015.
 - MACHINE FILLET RADII .003-.015.

THIS DOCUMENT MAY CONTAIN ITAR CONTROLLED INFORMATION AND/OR COMMERCE CONTROLLED INFORMATION EXPORT RESTRICTIONS MAY APPLY

QTY REQD		ITEM NO	REF DES	CAGE NO	20008076-1	PART OR IDENTIFYING NO	NOMENCLATURE OR DESCRIPTION	SPECIFICATION	MATERIAL OR NOTE	ZONE
PARTS LIST										
CONTRACT NO		UNLESS OTHERWISE SPECIFIED DIMENSIONS ARE IN INCHES TOLERANCES DECIMALS .XX ±.03 .XXX ±.010 ANGLES ± 1/2° MACHINE FINISH 63 DO NOT SCALE DRAWING INTERPRET DWG PER ASME Y14.5M-1994			<div style="color: red; font-weight: bold; font-size: 1.2em;">RELEASED</div> <div style="color: red; font-weight: bold; font-size: 1.2em;">8/31/2004</div>		ALLIANCE SPACESYSTEMS, INC. 1250 Lincoln Ave., Suite 100 Pasadena, CA 91103		TIE BAR, CROSS - PIVOT BLOCK SPRING TEST FIXTURE LIGO-D048076-A	
20008050		1388			AL 6061-T6 AMS-QQ-A-250/11		DWN KEVIN J SPINK 08/16/04 PROJ ENGR STRS CHK MATL CONFIG PROJ ME QA		SIZE D CAGE CODE 1KNU9 <div style="font-size: 1.5em; font-weight: bold;">20008076</div> SCALE 1:2 UNCLASSIFIED SHEET 1 OF 1	
NEXT ASSEMBLY		PROJECT CODE			APPLICATION		REV A		REV 7/04	

