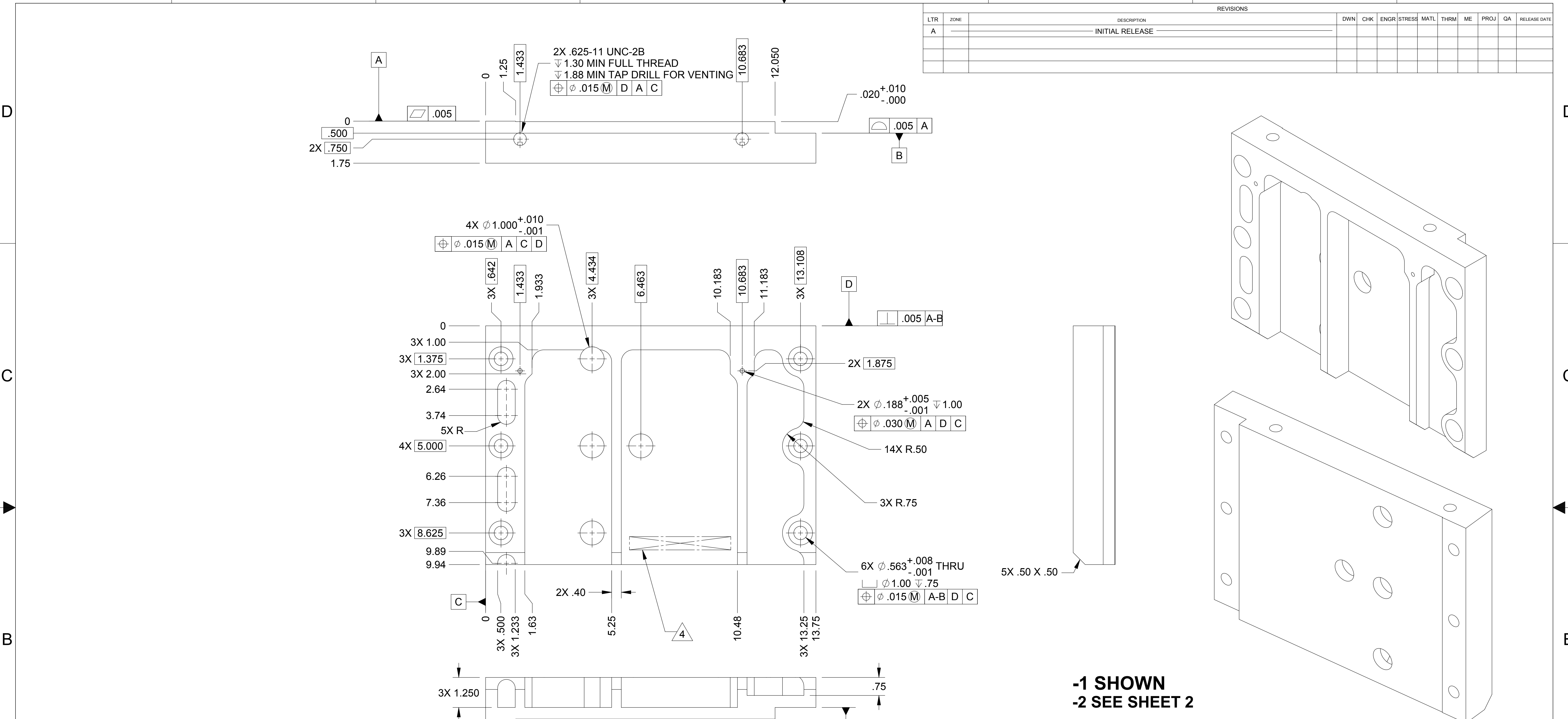
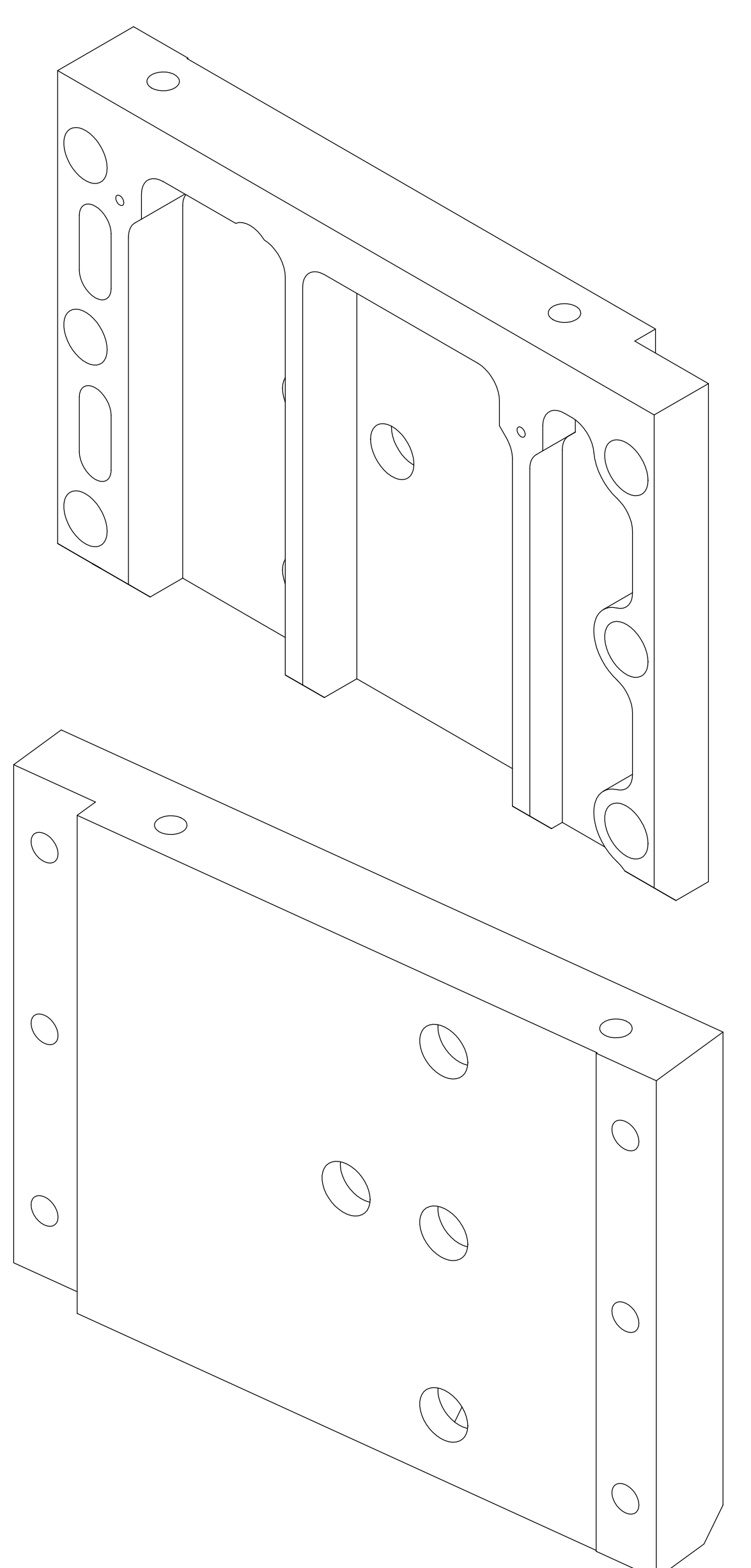


		REVISIONS																				
LTR	ZONE	DESCRIPTION										DWN	CHK	ENGR	STRESS	MATL	THRM	ME	PROJ	QA	RELEASE DATE	
A		INITIAL RELEASE																				



- NOTES: UNLESS OTHERWISE SPECIFIED.
- ALL PARTS SHALL BE MANUFACTURED IN ACCORDANCE WITH ASI SPECIFICATION 20008225 (LIGO E048225).
 - REMOVE ALL BURRS AND SHARP EDGES .005-.015.
 - MACHINE FILLET RADII .003-.015.
 - MARK PART AND SERIAL NUMBER IN LOCATION APPROXIMATELY AS SHOWN USING 0.13-INCH HIGH CHARACTERS IN ACCORDANCE WITH 20006686, TYPE I, CLASSES 4, 5, OR 6. SERIAL NUMBERS START AT 001 FOR FIRST PART AND PROCEED CONSECUTIVELY. PARTS TOO SMALL TO MARK SHALL BE IDENTIFIED IN ACCORDANCE WITH 20006686, TYPE II.
 - THREADED HOLES NOT REQUIRING INSERTS SHALL BE TAPPED .004-.006 OVERSIZE.
 - COUNTERSINK 82° ALL TAPPED HOLES TO MAJOR DIAMETER +.015/-0.000.
 - COUNTERSINK 82° ALL DRILLED HOLES .015-.030 DEEP BOTH SIDES.
 - RECORD WEIGHT TO NEAREST 0.1 LB ON INSPECTION REPORT AFTER FINAL MACHINING. ESTIMATED WEIGHT PER DASH NUMBER IS: 20007955-1=11.0 LBS, 20007955-2=11.7 LBS.
 - THIS PART IS TO BE PRODUCED USING THE CAD MODEL. IF THERE ARE DISCREPANCIES BETWEEN THIS DRAWING AND THE MODEL DATABASE THE MODEL DATABASE WILL TAKE PRECEDENCE.

**-1 SHOWN
-2 SEE SHEET 2**



THIS DOCUMENT MAY CONTAIN ITAR CONTROLLED INFORMATION AND/OR COMMERCE CONTROLLED INFORMATION EXPORT RESTRICTIONS MAY APPLY

QTY REQD	ITEM NO	REF DES	CAGE NO	PART OR IDENTIFYING NO	NOMENCLATURE OR DESCRIPTION	SPECIFICATION	MATERIAL OR NOTE	ZONE
				20007955-2	BLADE POST GUSSET, TYPE 2			
				20007955-1	BLADE POST GUSSET, TYPE 1			

CONTRACT NO		UNLESS OTHERWISE SPECIFIED DIMENSIONS ARE IN INCHES TOLERANCES		PARTS LIST		ALLIANCE SPACESYSTEMS, INC.	
		DECIMALS	ANGLES	CONTRACT NO		1250 Lincoln Ave., Suite 100	
.XX ±.03	.XXX ±.010	± 1/2°				Pasadena, CA 91103	
MACHINE FINISH		125		DWN	KEVIN J SPINK	07/15/04	
DO NOT SCALE DRAWING INTERPRET DWG PER ASME Y14.5M-1994				PROJ ENGR			
MATERIAL		AL ALY 7075-T651 PER AMS-QQ-A-250/12		CHK			
20007950	1388			MATL			
NEXT ASSEMBLY	PROJECT CODE			CONFIG	PROJ		
				ME	QA		

SIZE	CAGE CODE	REV
D	1KNU9	A

SCALE	CLASSIFICATION	SHEET	TOTAL SHEETS
1:2	UNCLASSIFIED	1 OF 2	2

RELEASED
9/13/2004



ALLIANCE SPACESYSTEMS, INC.
1250 Lincoln Ave., Suite 100
Pasadena, CA 91103

**BLADE POST GUSSET
STAGE 0
LIGO D047955-A**

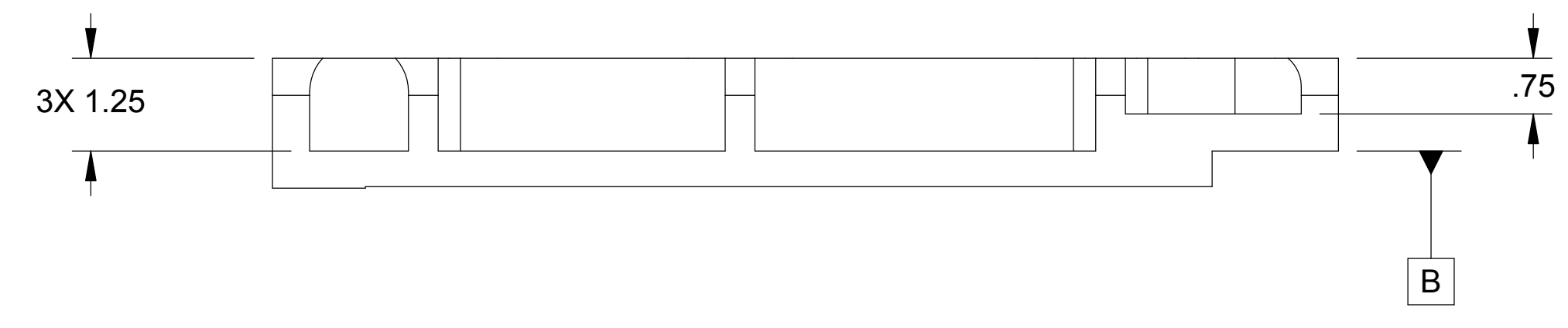
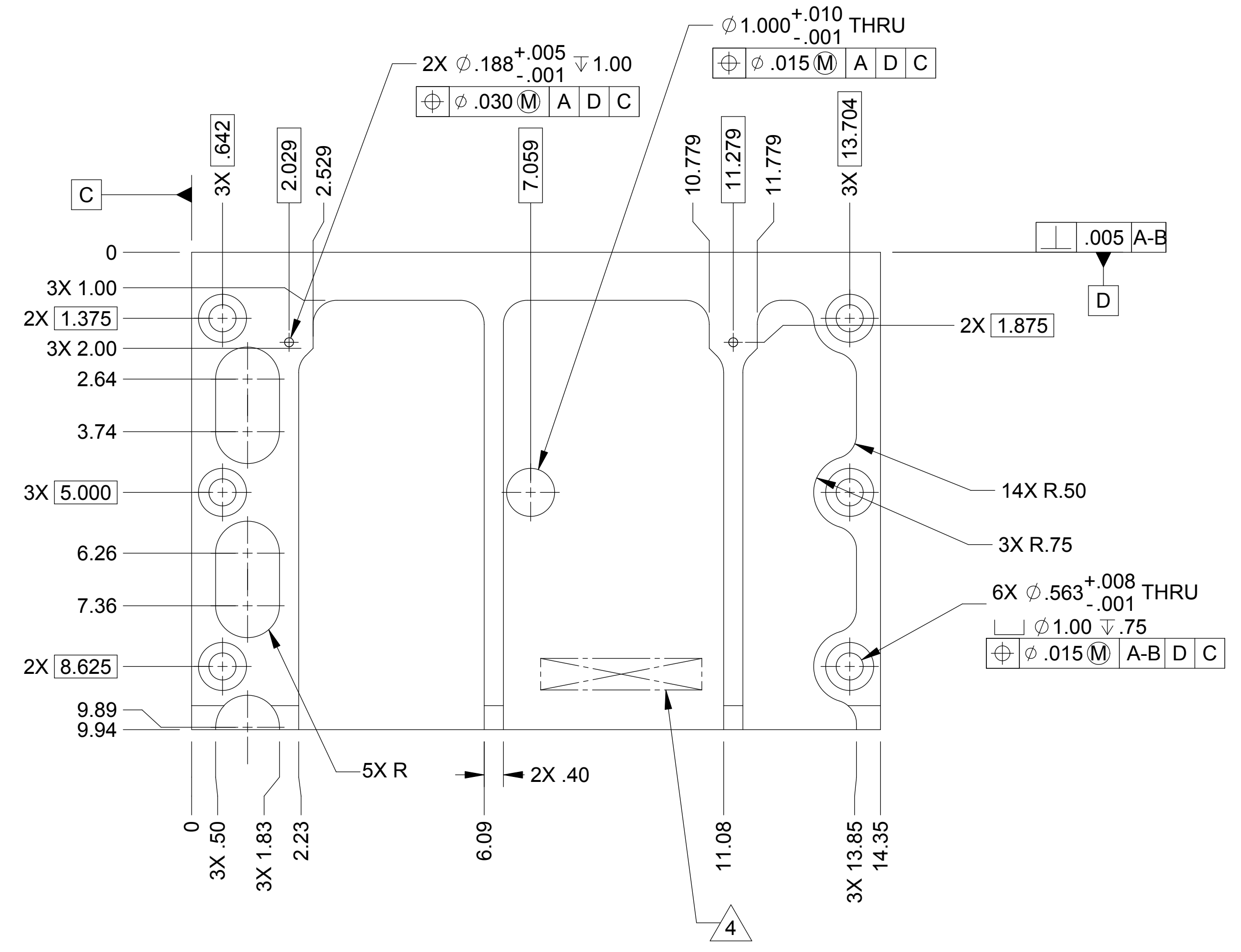
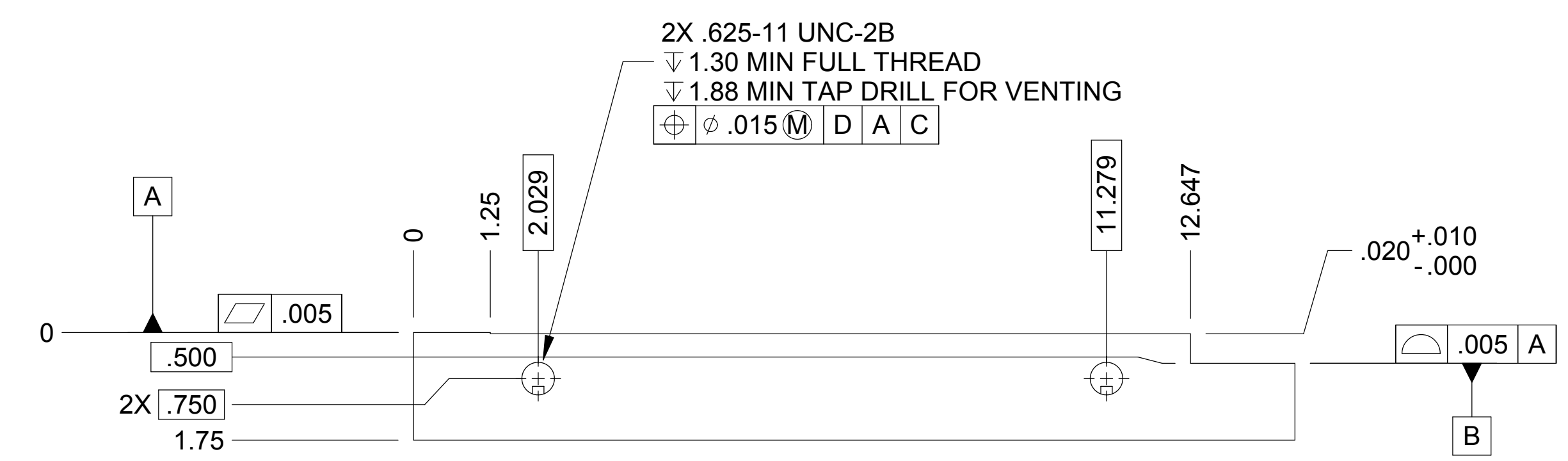
20007955

8 7 6 5 4 3 2 1

THIS DRAWING IS PRELIMINARY
AND NOT UNDER CONFIGURATION
CONTROL UNLESS A RED RELEASED
DATE IS SHOWN
RELEASED
9/13/2004

D
C
B
A

D
C
B



**-2 SHOWN
-1 SEE SHEET 1**

NOTES: SEE SHEET ONE

THIS DOCUMENT MAY CONTAIN ITAR CONTROLLED INFORMATION
AND/OR COMMERCE CONTROLLED INFORMATION
EXPORT RESTRICTIONS MAY APPLY

		ALLIANCE SPACESYSTEMS, INC. 1250 Lincoln Ave., Suite 100 Pasadena, CA 91103	
SIZE D	CAGE CODE 1KNU9	20007955	REV A
SCALE 1:2	UNCLASSIFIED	SHEET 2 OF 2	REV 3/03

8 7 6 5 4 3 2 1