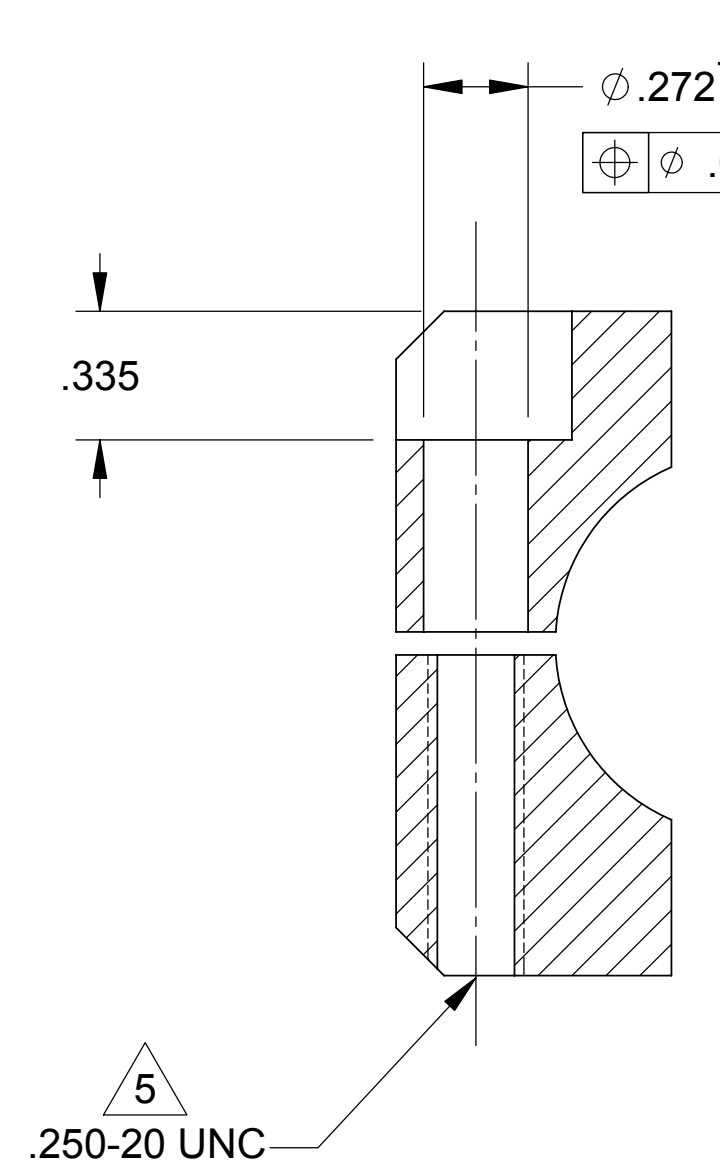
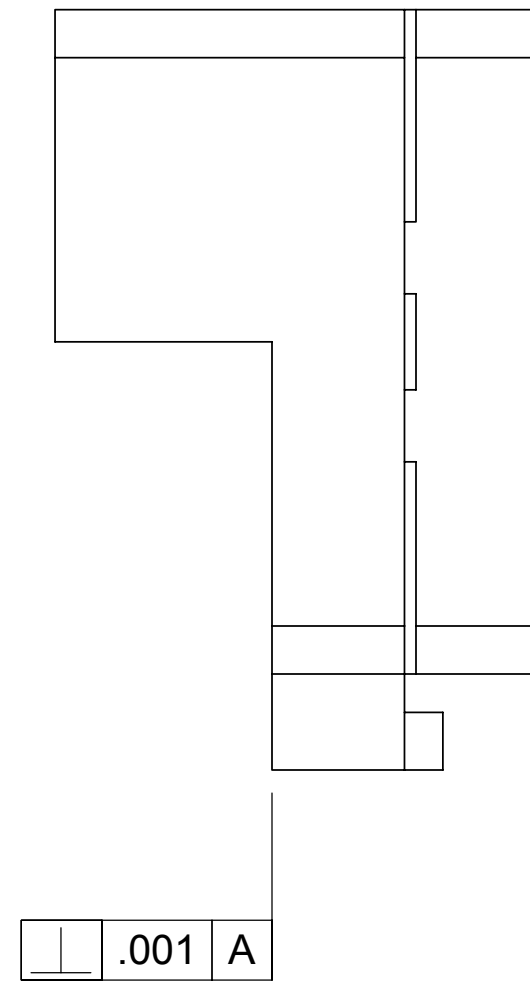
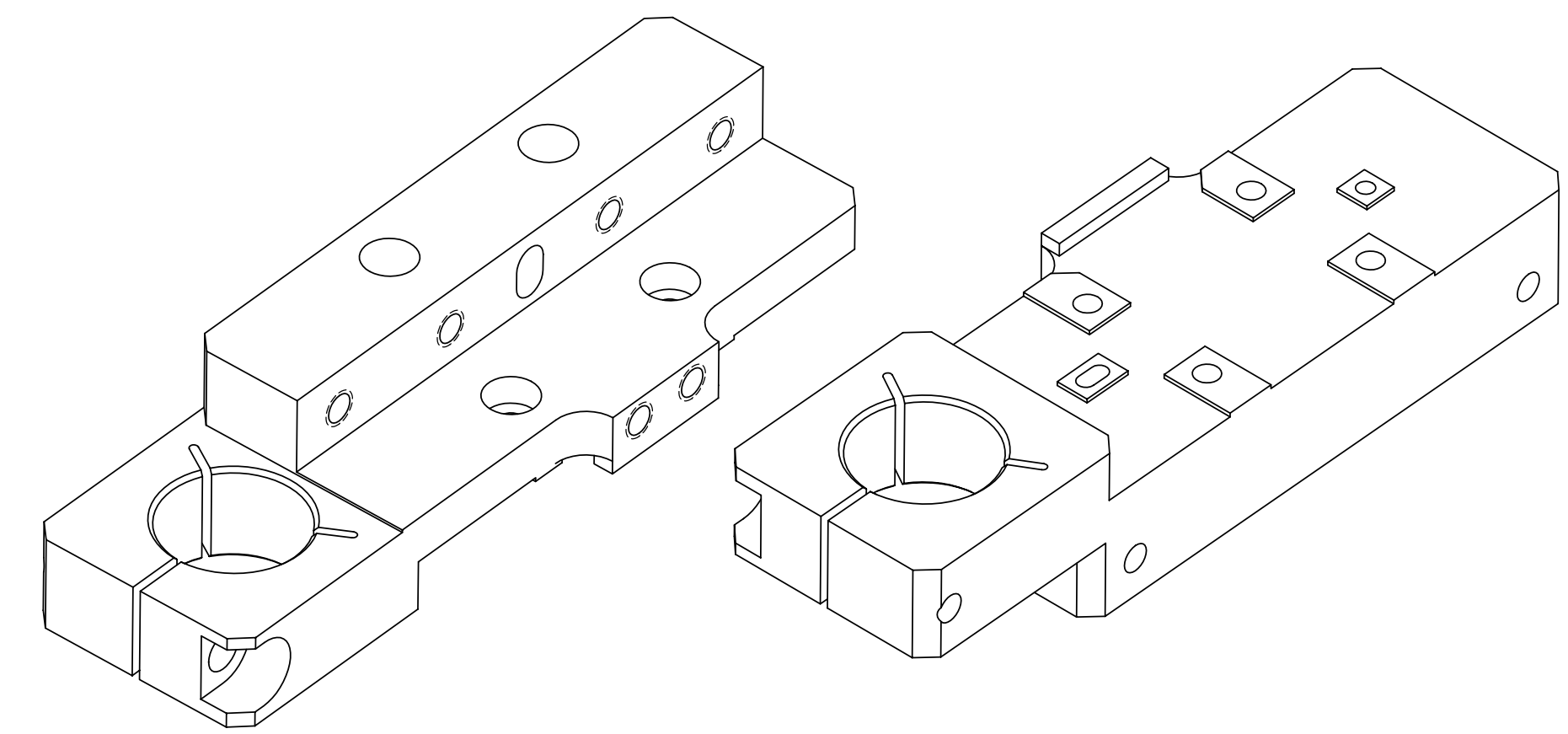
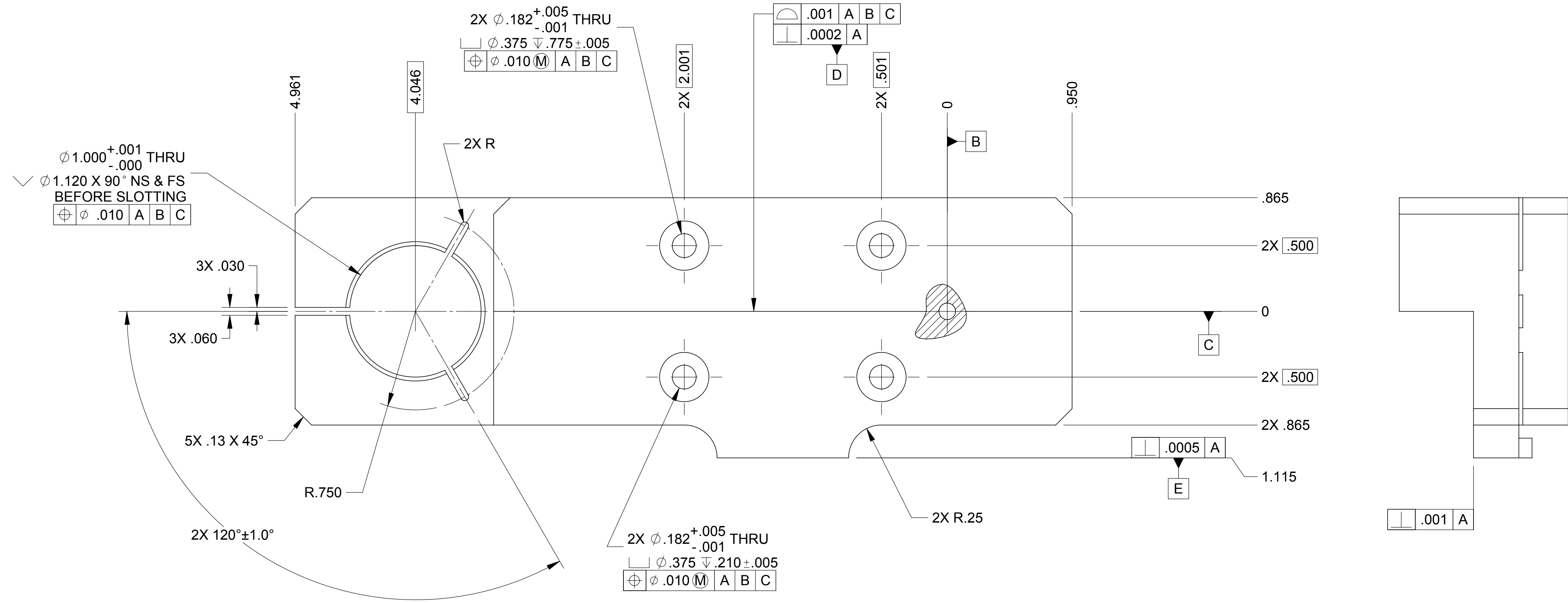
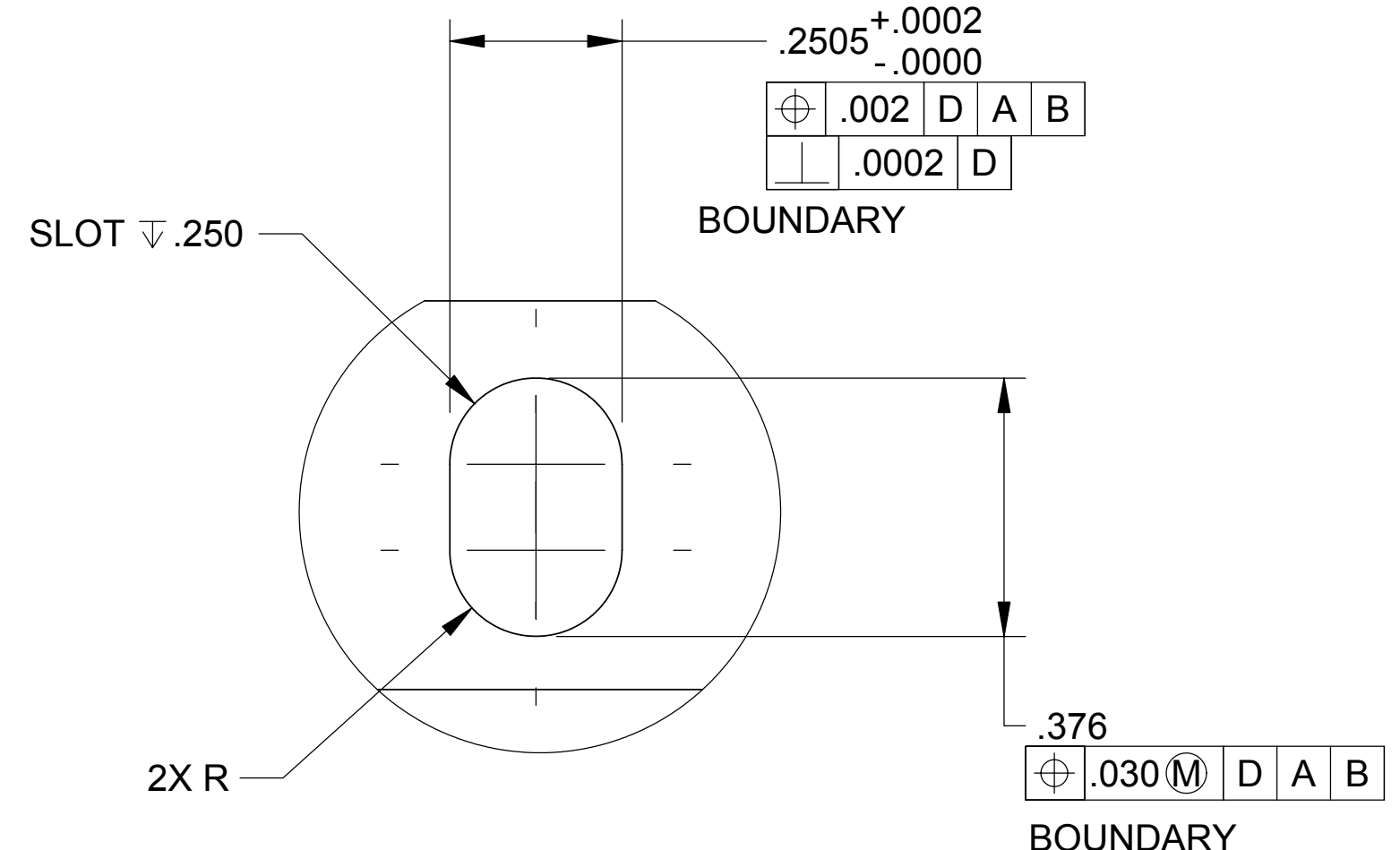
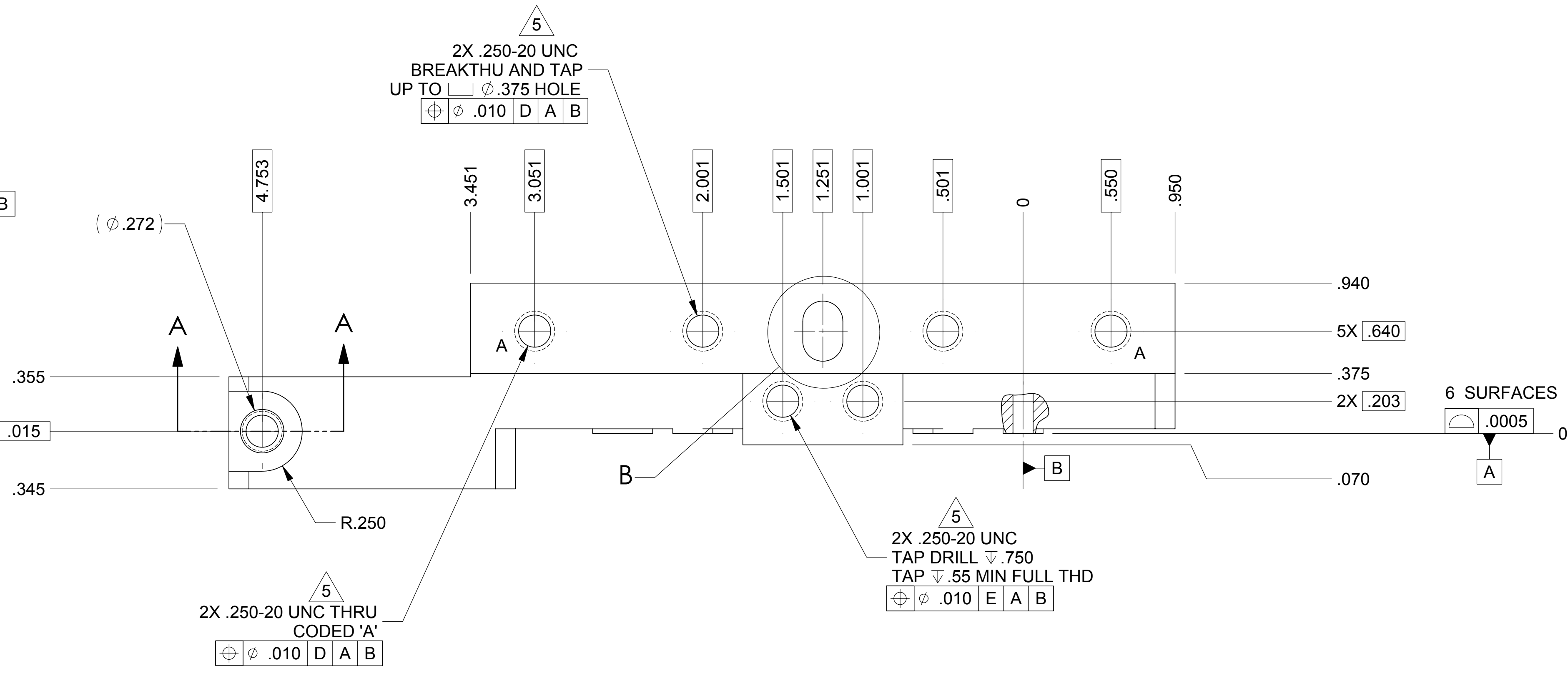


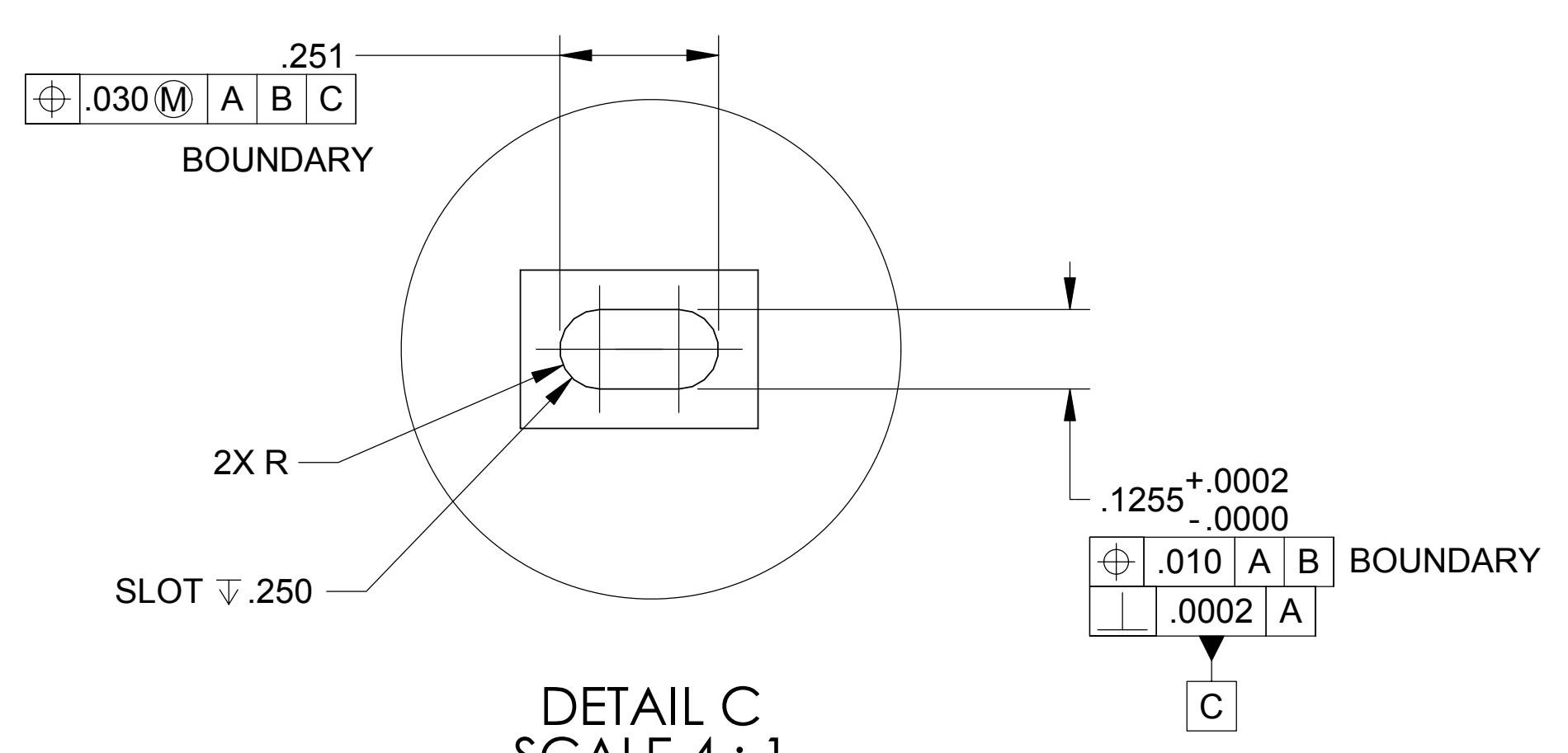
LTR		ZONE		REVISIONS										
				DWN	CHK	P-ENG	CONFG	ME	STRS	MATL	PROJ	QA	RELEASE DATE	
A														
				INITIAL RELEASE										



SECTION A-A



DETAIL B SCALE 4:1



DETAIL C SCALE 4:1

- NOTES: UNLESS OTHERWISE SPECIFIED.
- ALL PARTS SHALL BE MANUFACTURED IN ACCORDANCE WITH ASI SPECIFICATION 20008225 (LIGO E048225).
 - REMOVE ALL BURRS AND SHARP EDGES .005-.015.
 - MACHINE FILLET RADII .003-.015.
 - MARK PART AND SERIAL NUMBER IN LOCATION APPROXIMATELY AS SHOWN USING 0.13-INCH HIGH CHARACTERS IN ACCORDANCE WITH 20006686, TYPE I, CLASSES 4, 5, OR 6. SERIAL NUMBERS START AT 001 FOR FIRST PART AND PROCEED CONSECUTIVELY. PARTS TOO SMALL TO MARK SHALL BE IDENTIFIED IN ACCORDANCE WITH 20006686, TYPE II.
 - THREADED HOLES SHALL BE PRODUCED TO A .004-.006 OVERSIZE CONDITION ON THE PITCH DIAMETER BASED ON A 2B CONDITION. THIS DOES NOT APPLY TO THREADED INSERT HOLES.
 - COUNTERSINK 82° ALL TAPPED HOLES TO MAJOR DIAMETER +.015/-0.00.
 - COUNTERSINK 82° ALL DRILLED HOLES .015-.030 DEEP BOTH SIDES.
 - RECORD WEIGHT TO NEAREST 0.1 LB ON INSPECTION REPORT AFTER FINAL MACHINING. ESTIMATED WEIGHT IS 1.7 LBS.

20007920-1									
QTY REQD	ITEM NO	REF DES	CAGE NO	PART OR IDENTIFYING NO	NOMENCLATURE OR DESCRIPTION	SPECIFICATION	MATERIAL	NOTE	ZONE
PARTS LIST									
CONTRACT NO				UNLESS OTHERWISE SPECIFIED DIMENSIONS ARE IN INCHES		TOLERANCES		ANGLES	
				DECIMALS .XX ± .03		XXX ± .010 ± 1/2°			
				MACHINE FINISH 63		DO NOT SCALE DRAWING		INTERPRET DWG PER ASME Y14.5M - 1994	
				MATERIAL 303 CRES FORGING PER ASTM A 473					
				DWN R.D.BILLING 07/09/04		STRS			
				PROJ ENGR		MAIL			
				CONFIG		PROJ		SIZE E	
				ME		QA		CAGE CODE 1KNU9	
				APPLICATION				SCALE 2:1	
				20007968		1388		20007920	
				NEXT ASSEMBLY		PROJECT CODE		REV A	
								UNCLASSIFIED SHEET 1 OF 1	

THIS DOCUMENT MAY CONTAIN ITAR CONTROLLED INFORMATION AND/OR COMMERCE CONTROLLED INFORMATION EXPORT RESTRICTIONS MAY APPLY