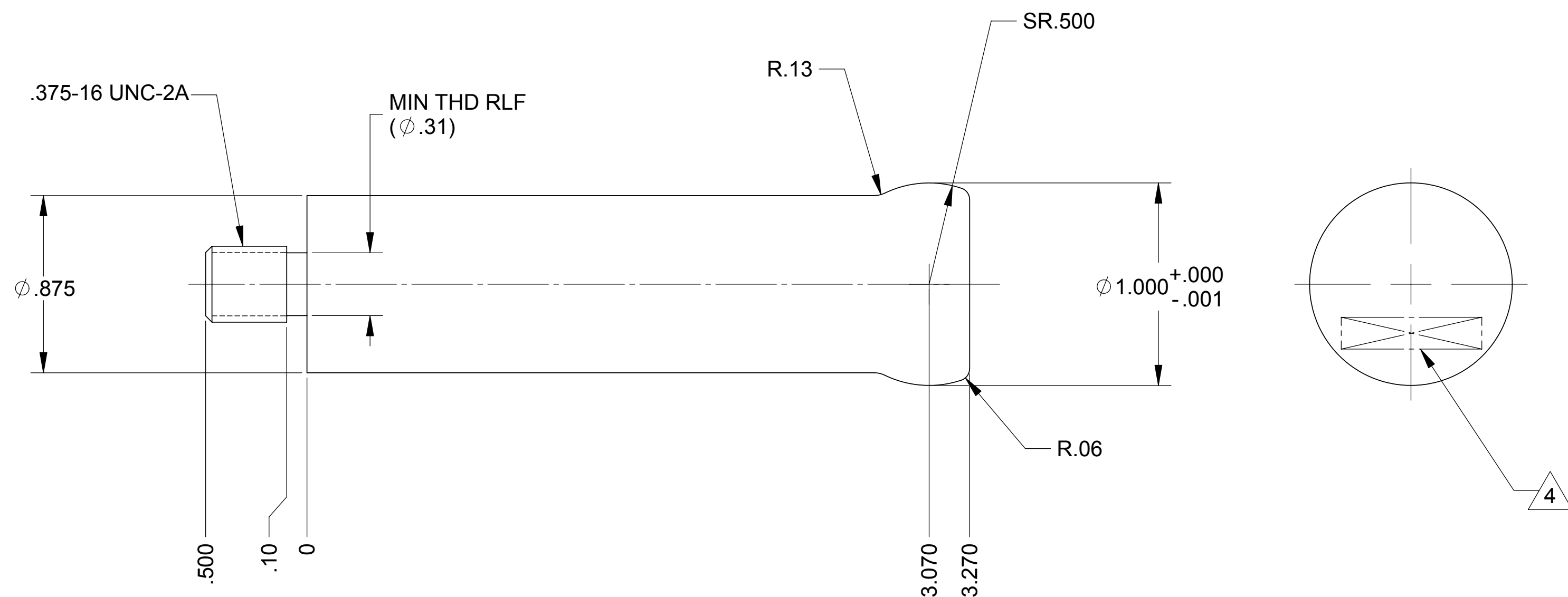
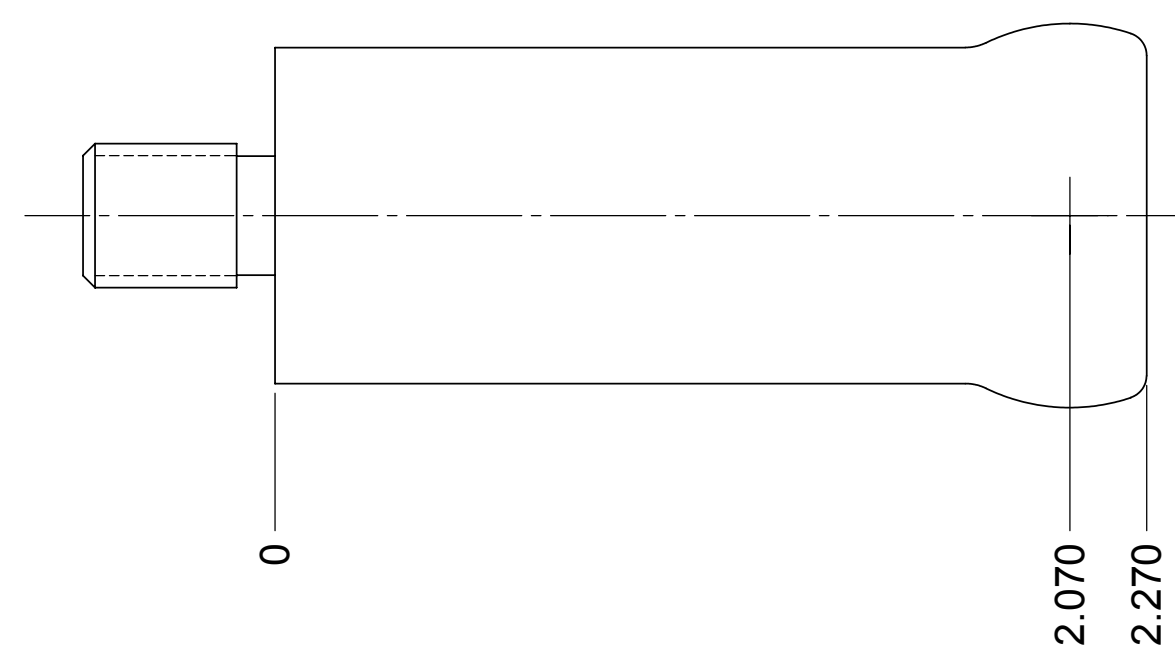


LTR		ZONE	DESCRIPTION	REVISIONS										
DWN	CHK	P-ENG	CONFIG	ME	STRS	MATL	PROJ	QA	RELEASE DATE					
A			INITIAL RELEASE											



**-1 SHOWN**



**-2 SAME AS -1 EXCEPT AS SHOWN**

NOTES: UNLESS OTHERWISE SPECIFIED.

- ALL PARTS SHALL BE MANUFACTURED IN ACCORDANCE WITH ASI SPECIFICATION 20008225 (LIGO E048225).
- REMOVE ALL BURRS AND SHARP EDGES .005-.015.
- MACHINE FILLET RADII .003-.015.
- MARK PART AND SERIAL NUMBER IN LOCATION APPROXIMATELY AS SHOWN USING 0.07-INCH HIGH CHARACTERS IN ACCORDANCE WITH 20006686, TYPE I, CLASSES 4, 5, OR 6. SERIAL NUMBERS START AT 001 FOR FIRST PART AND PROCEED CONSECUTIVELY. PARTS TOO SMALL TO MARK SHALL BE IDENTIFIED IN ACCORDANCE WITH 20006686, TYPE II.
- TOTAL INDICATED RUNOUT BETWEEN ALL CONCENTRIC DIAMETERS SHALL BE .010 MAX.
- RECORD WEIGHT TO NEAREST 0.1 LB ON INSPECTION REPORT AFTER FINAL MACHINING. ESTIMATED WEIGHTS 0.2 LBS, -1, AND 0.1 LBS, -2.

THIS DOCUMENT MAY CONTAIN ITAR CONTROLLED INFORMATION AND/OR COMMERCE CONTROLLED INFORMATION EXPORT RESTRICTIONS MAY APPLY

QTY REQD	ITEM NO	REF DES	CAGE NO	PART OR IDENTIFYING NO	NOMENCLATURE OR DESCRIPTION	SPECIFICATION	MATERIAL OR NOTE	ZONE
				20007913-2	POST, STAGE 1-2			
				20007913-1	POST, STAGE 0-1			

CONTRACT NO		UNLESS OTHERWISE SPECIFIED DIMENSIONS ARE IN INCHES		TOLERANCES		MACHINE FINISH		MATERIAL	
		DECIMALS	ANGLES	XX ±.03	.XXX ±.010	± 1/2°	63	AL 7075-T651	AMS-QQ-A-225/9
20007912		1388							
NEXT ASSEMBLY		PROJECT CODE							
APPLICATION									

SIZE	CAGE CODE	REV
D	1KNU9	A

SCALE	CLASSIFICATION	SHEET	TOTAL SHEETS
2:1	UNCLASSIFIED	1 OF 1	1

**RELEASED**  
1/17/2005

**asi** ALLIANCE SPACESYSTEMS, INC.  
1250 Lincoln Ave., Suite 100  
Pasadena, CA 91103

**STAGE 0-1 & 1-2  
DISPLACEMENT SENSOR POST  
LIGO-D047913-A**

FILE ATTACHMENTS  
20007913.x\_t