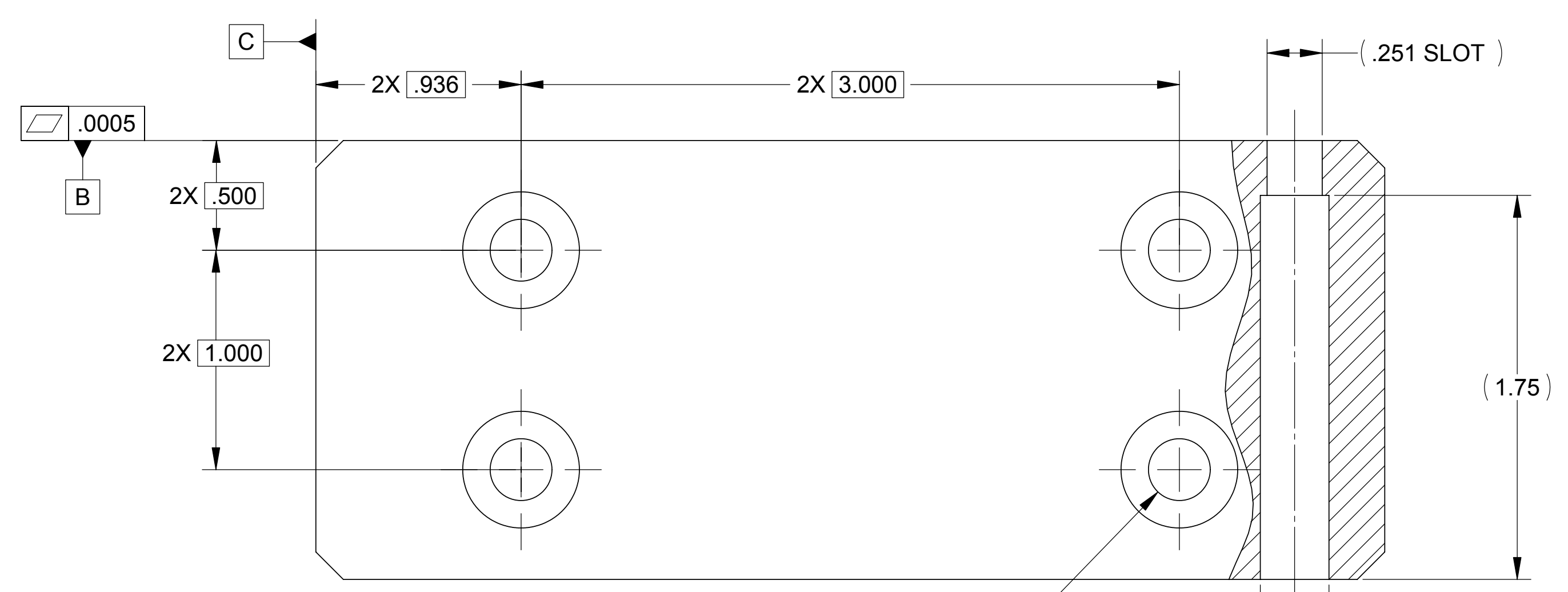
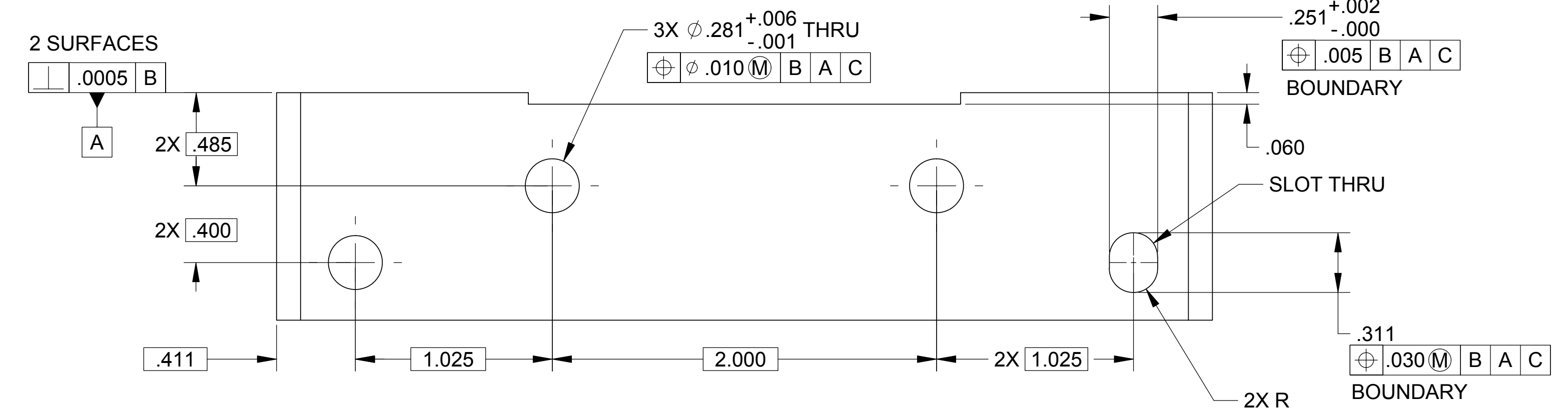
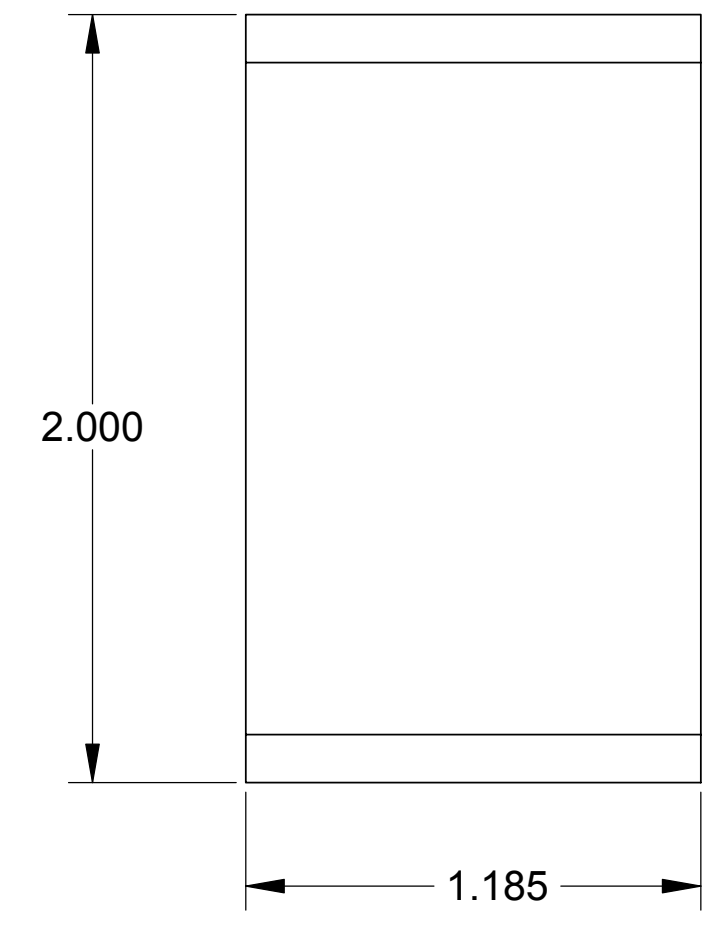
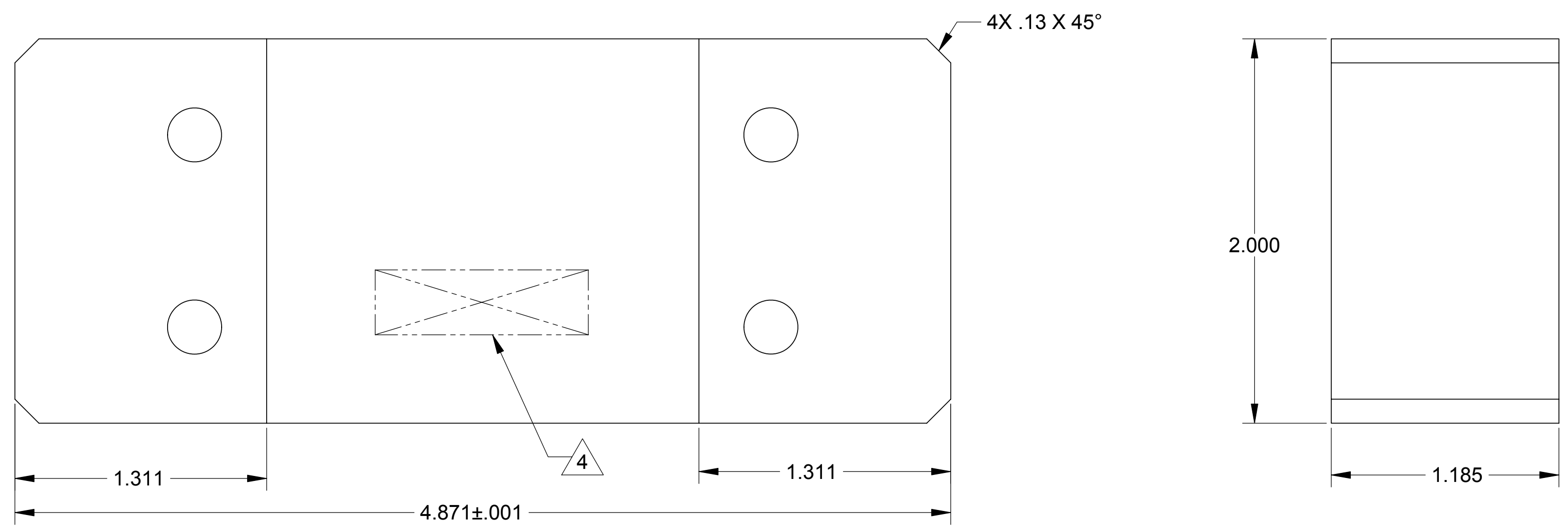
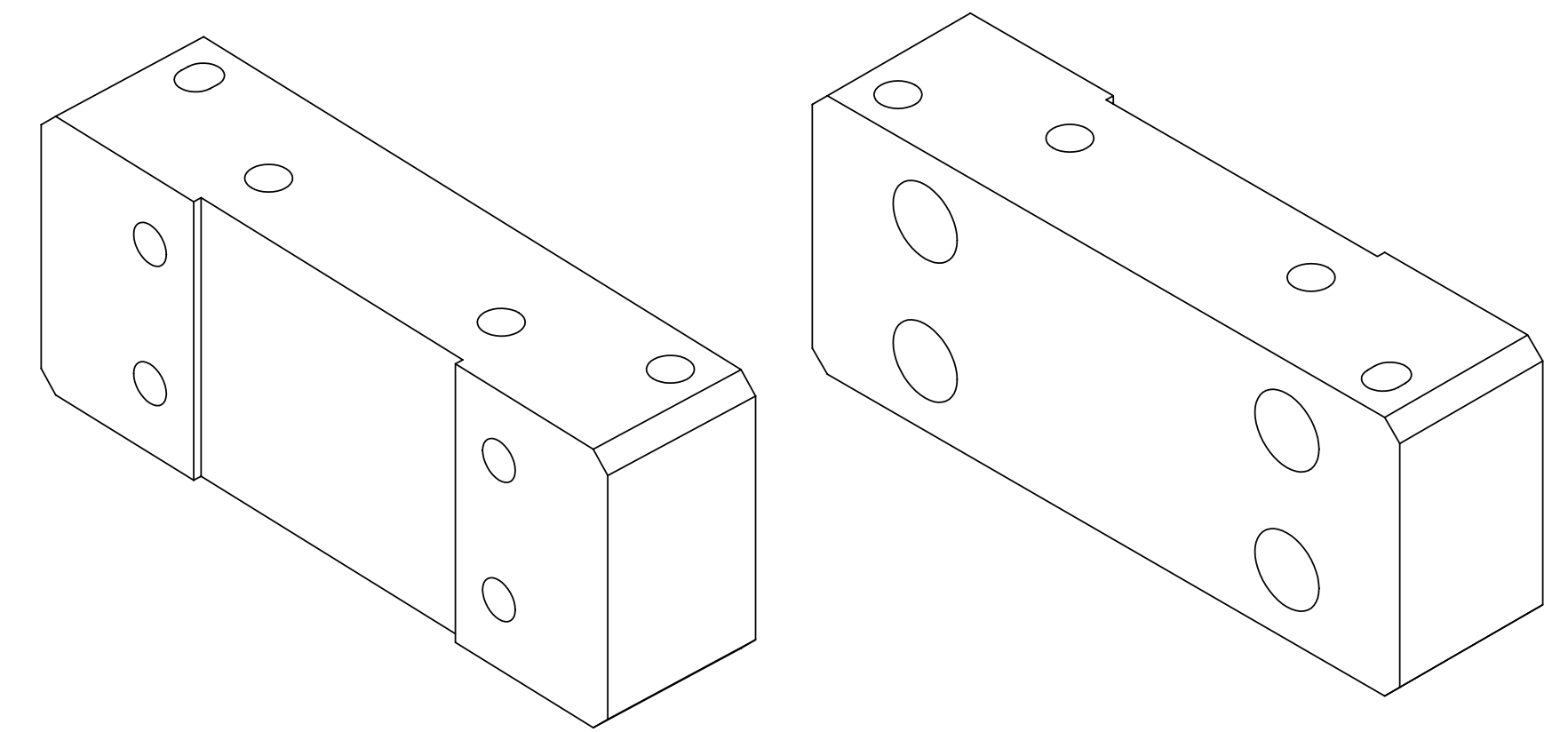
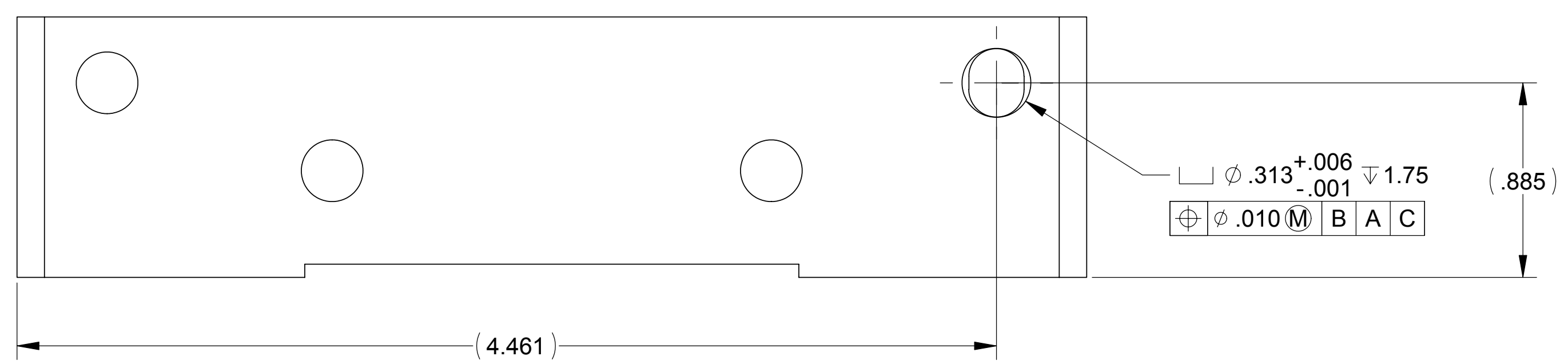


LTR		ZONE		REVISIONS										
				DESCRIPTION	DWN	CHK	P-ENG	CONFIG	ME	STRS	MATL	PROJ	QA	RELEASE DATE
A				INITIAL RELEASE										



NOTES: UNLESS OTHERWISE SPECIFIED.

- ALL PARTS SHALL BE MANUFACTURED IN ACCORDANCE WITH ASI SPECIFICATION 20008225 (LIGO E048225).
- REMOVE ALL BURRS AND SHARP EDGES .005-.015.
- MACHINE FILLET RADII .003-.015.
- MARK PART AND SERIAL NUMBER IN LOCATION APPROXIMATELY AS SHOWN USING 0.13-INCH HIGH CHARACTERS IN ACCORDANCE WITH 20006686, TYPE I, CLASSES 4, 5, OR 6. SERIAL NUMBERS START AT 001 FOR FIRST PART AND PROCEED CONSECUTIVELY. PARTS TOO SMALL TO MARK SHALL BE IDENTIFIED IN ACCORDANCE WITH 20006686, TYPE II.
- COUNTERSINK 82° ALL DRILLED HOLES .015-.030 DEEP BOTH SIDES.
- RECORD WEIGHT TO NEAREST 0.1 LB ON INSPECTION REPORT AFTER FINAL MACHINING. ESTIMATED WEIGHT IS 2.9 LBS.

20007909-1									
QTY REQD	ITEM NO	REF DES	CAGE NO	PART OR IDENTIFYING NO	NOMENCLATURE OR DESCRIPTION	SPECIFICATION	MATERIAL OR NOTE	ZONE	
PARTS LIST									
CONTRACT NO		UNLESS OTHERWISE SPECIFIED		DIMENSIONS ARE IN INCHES		TOLERANCES		RELEASED 1/17/2005	
		DECIMALS		ANGLES		MACHINE FINISH		125	
		.XX ±.03		.XXX ±.010		± 1/2"		AS ALLIANCE SPACESYSTEMS, INC.	
		MACHINE FINISH		DO NOT SCALE DRAWING		INTERPRET DWG PER ASME Y14.5M-1994		1250 Lincoln Ave., Suite 100	
		MATERIAL		303 CRES FORGING		ASTM A 473		Pasadena, CA 91103	
20007970		1388		20007970		1388		BRACKET, STAGE 0-1	
NEXT ASSEMBLY		PROJECT CODE		20007970		1388		HORZ ACT FIELD ADAPTER	
				20007970		1388		LIGO-D047909-A	
APPLICATION				20007970		1388		20007909	
				20007970		1388		REV A	
				20007970		1388		SCALE 2:1	
				20007970		1388		UNCLASSIFIED	
				20007970		1388		SHEET 1 OF 1	

THIS DOCUMENT MAY CONTAIN ITAR CONTROLLED INFORMATION AND/OR COMMERCE CONTROLLED INFORMATION EXPORT RESTRICTIONS MAY APPLY

FILE ATTACHMENTS
20007909.x_t