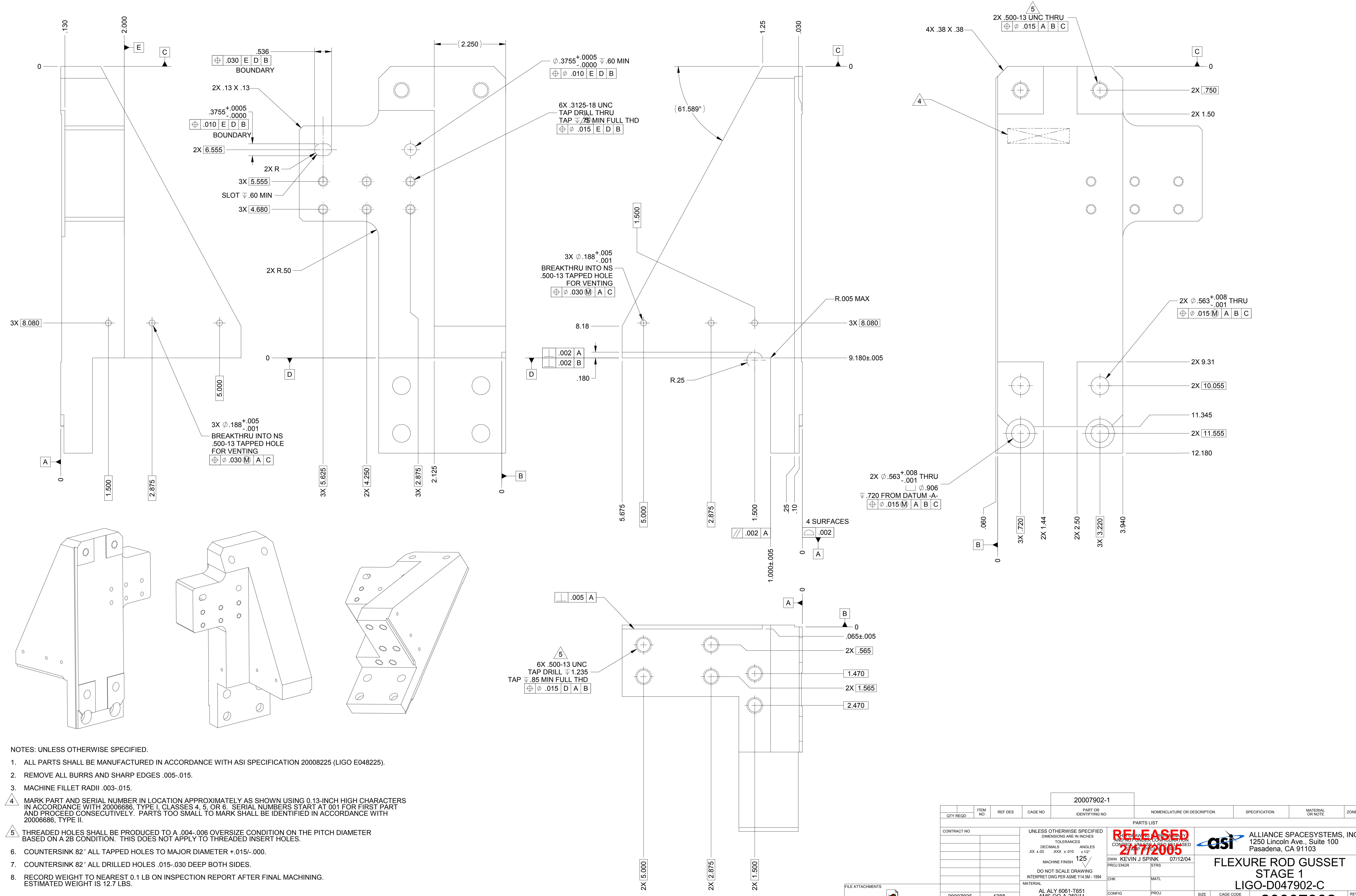


LTR		ZONE		REVISIONS										
				DWN	CHK	P-ENG	CONF	ME	STRS	MATL	PROJ	QA	RELEASE DATE	
A				KS	RF	KS	RF	RF	RK	DCW	DCW	SV	GDL	1-24-05
B	GS			RF	RF	KS	RF	RF	RF	DCW	DCW	SV	GDL	2-10-05
C	F-G6-7			RF										



- NOTES: UNLESS OTHERWISE SPECIFIED.
- ALL PARTS SHALL BE MANUFACTURED IN ACCORDANCE WITH ASI SPECIFICATION 20008225 (LIGO E048225).
 - REMOVE ALL BURRS AND SHARP EDGES .005-.015.
 - MACHINE FILLET RADII .003-.015.
 - MARK PART AND SERIAL NUMBER IN LOCATION APPROXIMATELY AS SHOWN USING 0.13-INCH HIGH CHARACTERS IN ACCORDANCE WITH 20006886, TYPE I, CLASSES 4, 5, OR 6. SERIAL NUMBERS START AT 001 FOR FIRST PART AND PROCEED CONSECUTIVELY. PARTS TOO SMALL TO MARK SHALL BE IDENTIFIED IN ACCORDANCE WITH 20006886, TYPE II.
 - THREADED HOLES SHALL BE PRODUCED TO A .004-.006 OVERSIZE CONDITION ON THE PITCH DIAMETER BASED ON A 2B CONDITION. THIS DOES NOT APPLY TO THREADED INSERT HOLES.
 - COUNTERSINK 82° ALL TAPPED HOLES TO MAJOR DIAMETER +.015/-.000.
 - COUNTERSINK 82° ALL DRILLED HOLES .015-.030 DEEP BOTH SIDES.
 - RECORD WEIGHT TO NEAREST 0.1 LB ON INSPECTION REPORT AFTER FINAL MACHINING. ESTIMATED WEIGHT IS 12.7 LBS.

QTY		REGD	ITEM NO	REF DES	CAGE NO	PART OR IDENTIFYING NO	NOMENCLATURE OR DESCRIPTION	SPECIFICATION	MATERIAL OR NOTE	ZONE
20007902-1										
PARTS LIST										
CONTRACT NO		UNLESS OTHERWISE SPECIFIED DIMENSIONS ARE IN INCHES		TOLERANCES		ANGLES		MACHINE FINISH		125
20007825		XX ±.03		XXX ±.010		±1/2°		MACHINE FINISH		125
NEXT ASSEMBLY		DO NOT SCALE DRAWING INTERPRET DWG PER ASME Y14.5M - 1994		MATERIAL		AL ALY 6061-T651 AMS-QQ-A-250/11		DWN KEVIN J SPINK		07/12/04
APPLICATION		20007902_X_1		1388		PROJECT CODE		STRS		07/12/04
SCALE 1:1		CAGE CODE		1KNU9		SIZE		E		C
UNCLASSIFIED		SHEET 1 OF 1		20007902		FLEXURE ROD GUSSET STAGE 1 LIGO-D047902-C		ALLIANCE SPACESYSTEMS, INC. 1250 Lincoln Ave., Suite 100 Pasadena, CA 91103		REV 704

THIS DOCUMENT MAY CONTAIN ITAR CONTROLLED INFORMATION AND/OR COMMERCE CONTROLLED INFORMATION EXPORT RESTRICTIONS MAY APPLY