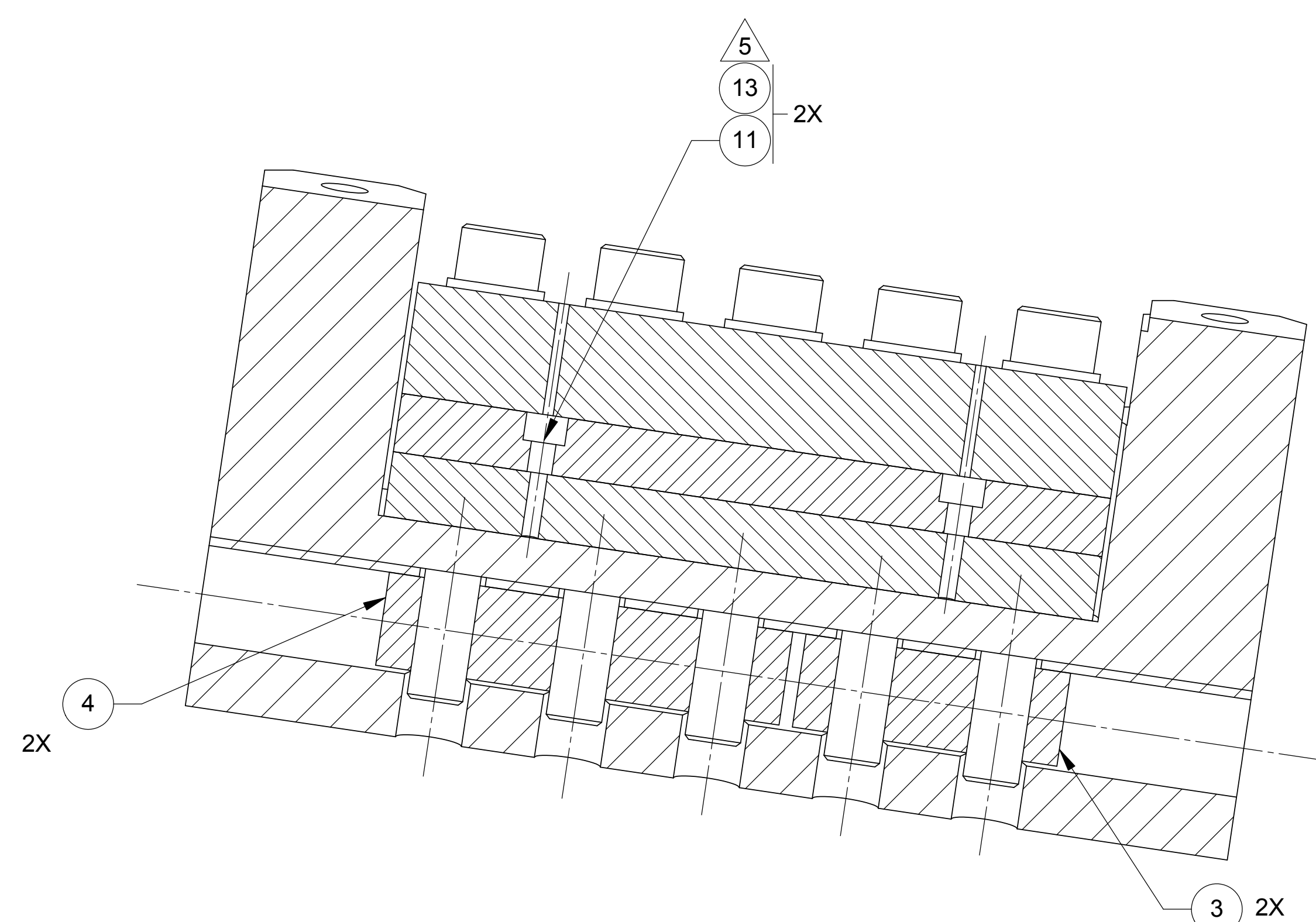
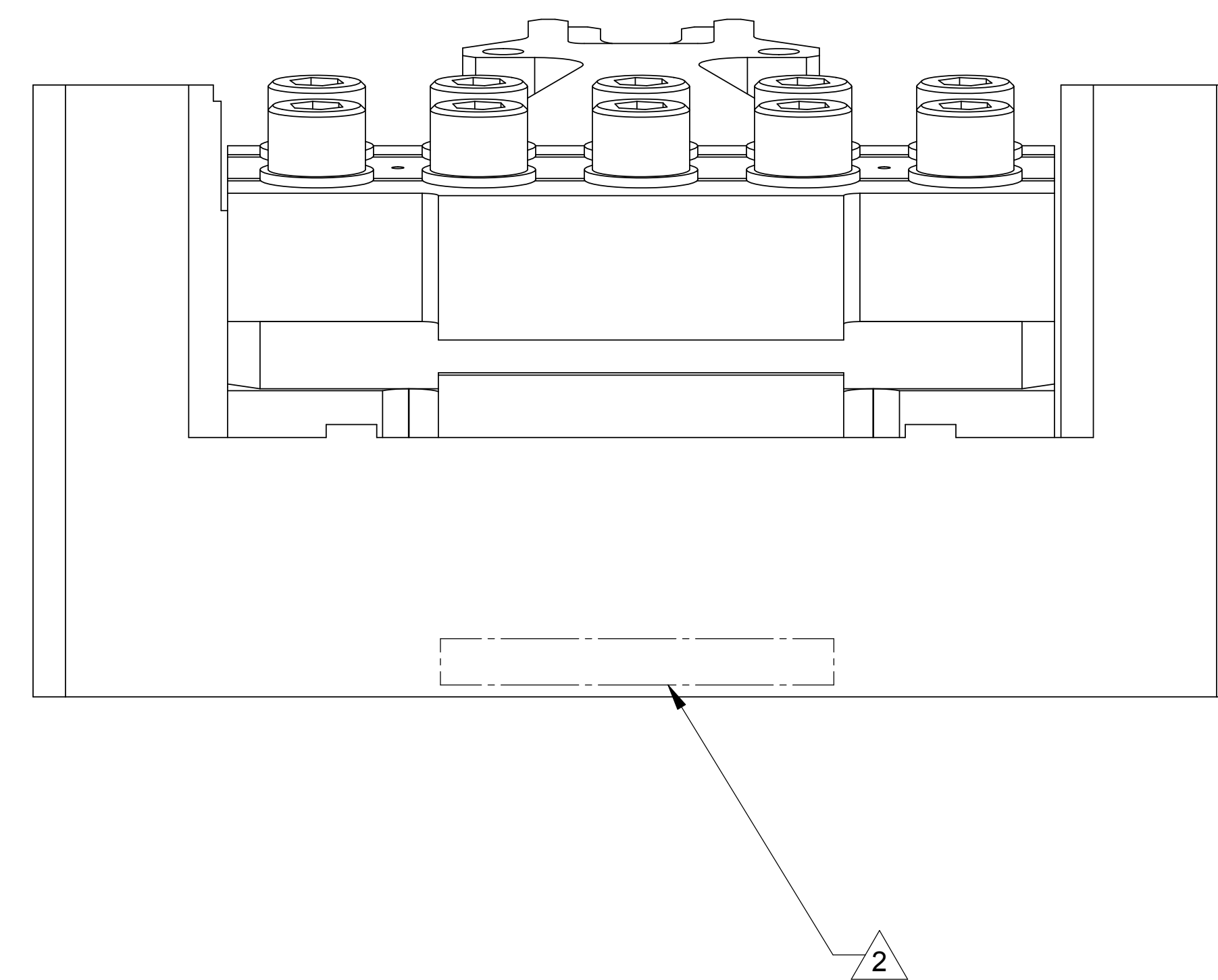
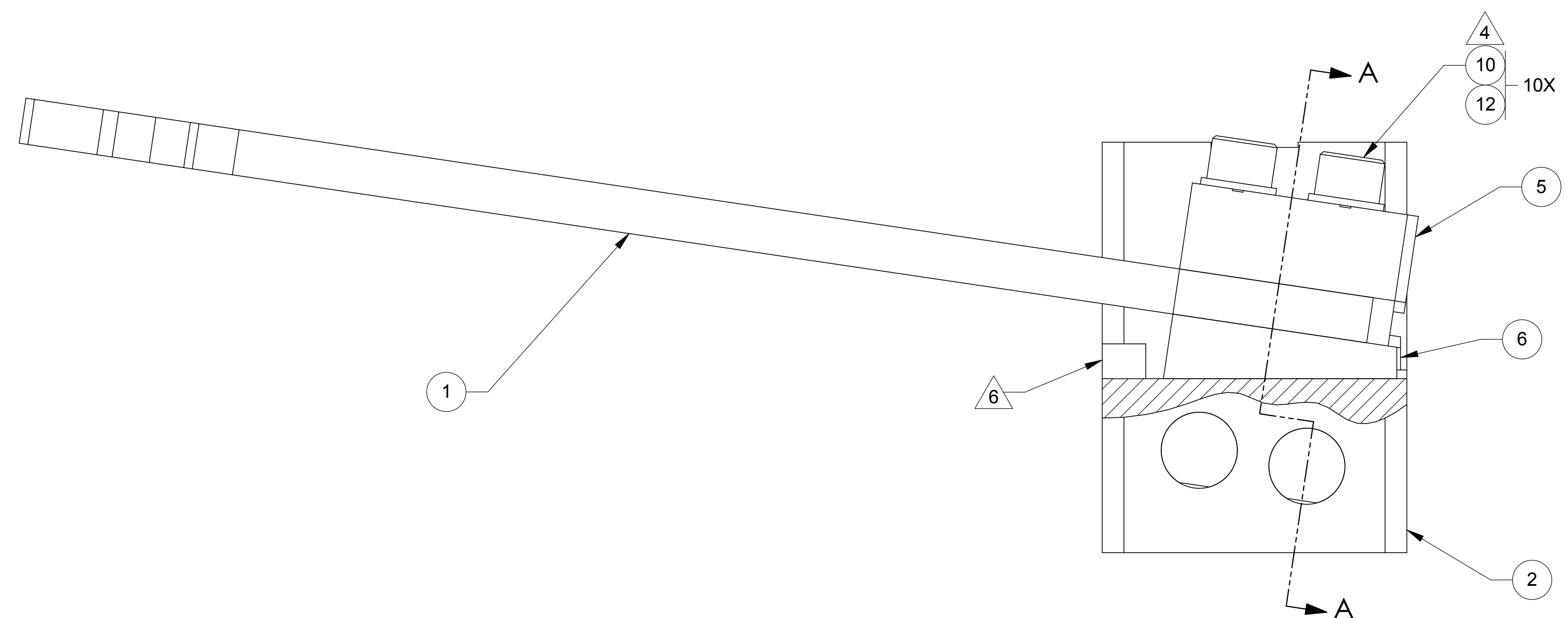


LTR	ZONE	DESCRIPTION	REVISIONS														
			DWN	CHK	P-ENG	CONF	ME	STRS	MATL	PROJ	QA	RELEASE DATE					
A		INITIAL RELEASE															



SECTION A-A
SCALE 1 : 1

NOTES: UNLESS OTHERWISE SPECIFIED.

- ALL PARTS SHALL BE MANUFACTURED IN ACCORDANCE WITH ASI SPECIFICATION 20008225 (LIGO E048225).
- MARK ASSY AND SERIAL NUMBER IN LOCATION APPROXIMATELY AS SHOWN USING 0.13-INCH HIGH CHARACTERS IN ACCORDANCE WITH 20006886, TYPE I, CLASSES 4, 5, OR 6. SERIAL NUMBERS START AT 001 FOR FIRST PART AND PROCEED CONSECUTIVELY.
- RECORD WEIGHT TO NEAREST 0.1 LB ON INSPECTION REPORT AFTER FINAL ASSEMBLY. ESTIMATED WEIGHT IS: 72.8 LBS.
- TORQUE BOLTS TO 110 FT-LBS.
- TORQUE BOLTS TO 30 IN-LBS.
- TWO .190-24 UNC HOLES ARE PROVIDED IN ITEM 2, SADDLE, FOR INSTALLING TWO FASTENERS TO SERVED AS ASSEMBLY AIDS THAT HOLD ITEM 6, SHIM AGAINST BACKSTOP FEATURE MACHINED INTO ITEM 2. THESE FASTENERS SHALL HAVE SMOOTH, NON-MARRING ENDS AND SHALL BE REMOVED BEFORE NEXT ASSEMBLY 20007970. TORQUE FASTENERS TO 10 IN-LBS MAX.
- BOLT TORQUING PROCEDURE SHALL ENSURE THAT THE SPECIFIED TORQUE IS APPLIED WITHIN A TOLERANCE OF +5% / -10%.
- RANGE OF ADJUSTMENT OF ITEM 6, BLADE SPRING SHIM, SHALL BE RESTRICTED BY EITHER OF THE FOLLOWING CONDITIONS:
 - ENGAGEMENT OF ITEM 10, BOLT SHALL BE 8.5 FULL THREADS MINIMUM.
 - ANGLE OF ITEM 6, BLADE SPRING SHIM, SHALL BE 11 DEGREES MAXIMUM.
- ALL SCREWS SHALL BE SILVER PLATED. DIMENSIONAL TOLERANCES PER UNC/UNF-2A APPLY AFTER PLATING.
- SOURCE OF SUPPLY: U-C COMPONENTS, INC. MORGAN HILL, CALIFORNIA 95037

QTY	REGD	ITEM NO	REF DES	CAGE NO	PART OR IDENTIFYING NO	NOMENCLATURE OR DESCRIPTION	SPECIFICATION	MATERIAL OR NOTE	ZONE
		2	13		WFV-10	WASHER, FLAT, VENTED	.195 ID, .354 OD X .032 THK	18-8 CRES	
		10	12		NAS1587-8C	WASHER, FLAT, C-SUNK	.515 ID, .875 OD X .086 THK	321 CRES	
		2	11		C-2412-A	SCREW, SHC, VENTED	.190-24 UNC X .750 L	18-8 CRES	
		10	10		NAS1352N8-60S	SCREW, SHC	.500-13 UNC X 3.750 L	A286 CRES	
		9							
		8							
		7							
		1	6		20007895-1	SHIM, BLADE SPRING			
		1	5		20007894-1	PLATE, BLADE SPRING CAP			
		2	4		20007883-3	BAR, BARREL NUT, 3 HOLE			
		2	3		20007883-2	BAR, BARREL NUT, 2 HOLE			
		1	2		20007892-1	SADDLE			
		1	1		20007890-1	SPRING			

CONTRACT NO 20007970		REF DES 1388		CAGE NO 1388		PART OR IDENTIFYING NO SEE PARTS LIST		NOMENCLATURE OR DESCRIPTION BLADE SPRING ASSY STAGE 1-2 LIGO D047890-A		SPECIFICATION UNCLASSIFIED		MATERIAL OR NOTE SHEET 1 OF 1		ZONE A	
UNLESS OTHERWISE SPECIFIED DIMENSIONS ARE IN INCHES TOLERANCES DECIMALS .XX ± .03 ANGLES XXX ± .010 ± 12° MACHINE FINISH --- DO NOT SCALE DRAWING INTERPRET DWG PER ASME Y14.5M - 1994		RELEASED 3/4/2005		ALLIANCE SPACESYSTEMS, INC. 1250 Lincoln Ave., Suite 100 Pasadena, CA 91103		DWN KEVIN J SPINK 12/02/04 PROJ ENGR STRS		SIZE E 1KNU9		CAGE CODE 20007890		SCALE 1:1		REV A	