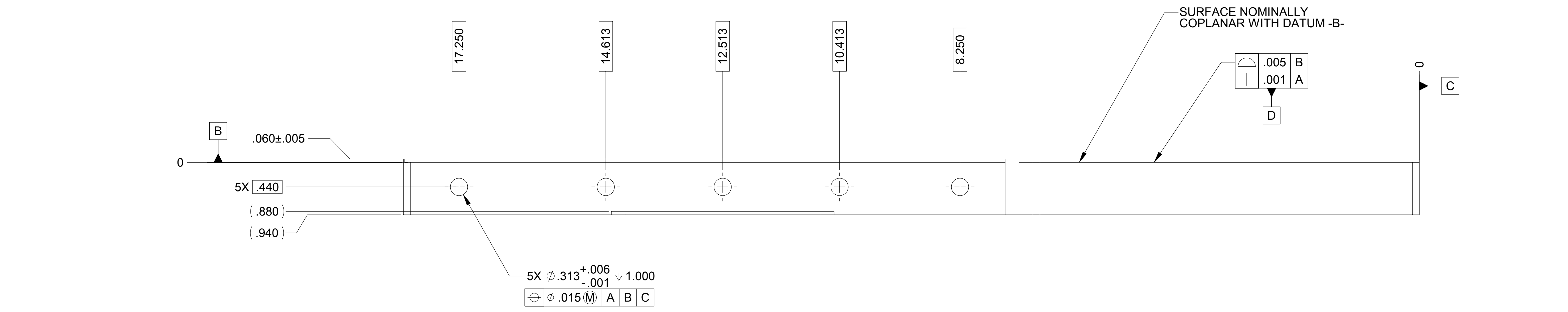
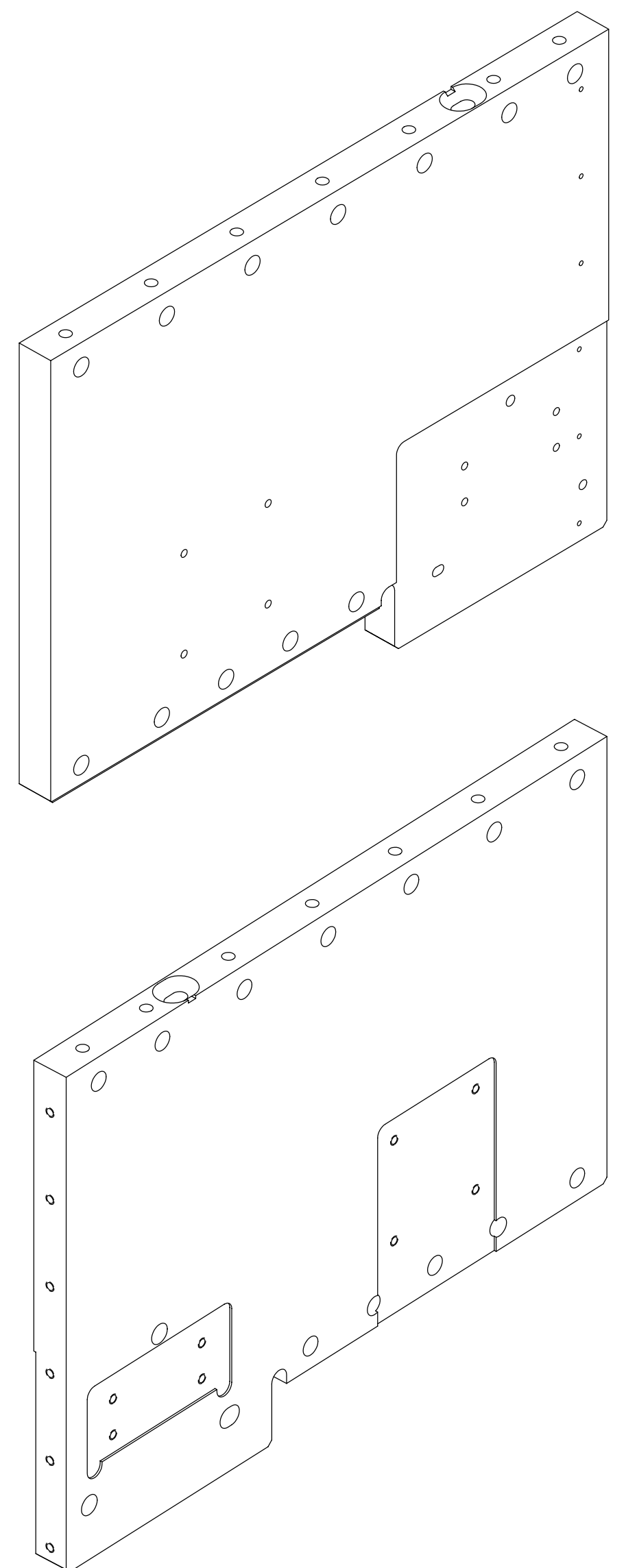
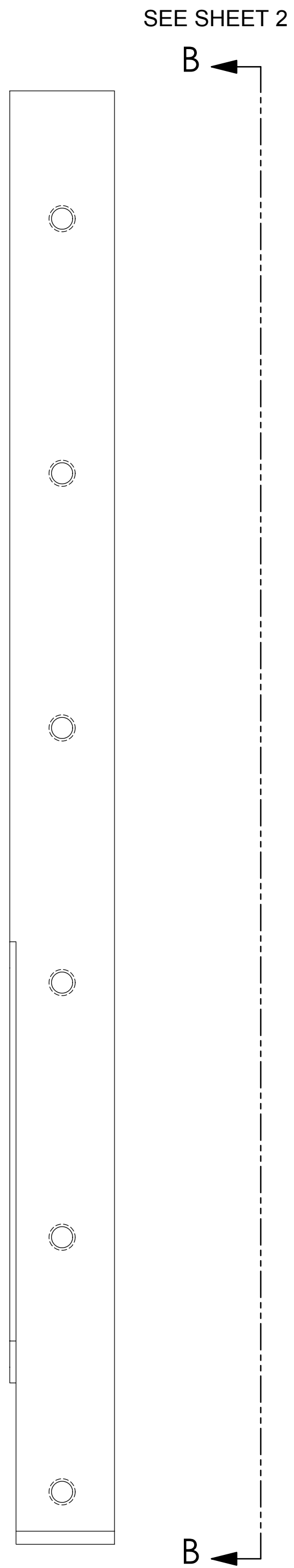
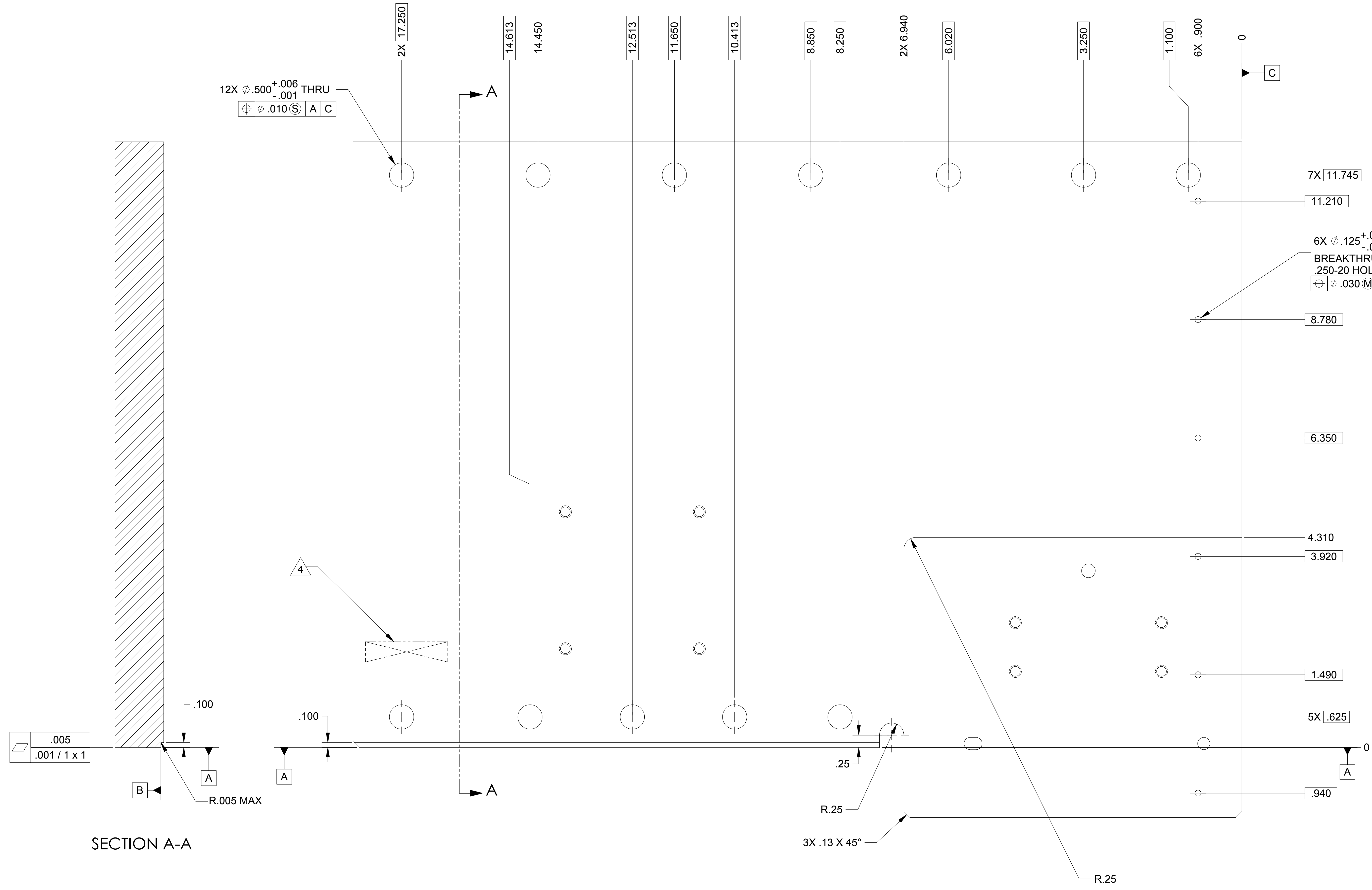


LTR		ZONE		REVISIONS										DWN	CHK	ENGR	STRESS	MATL	THRM	ME	PROJ	QA	RELEASE DATE	
A				INITIAL RELEASE																				



- NOTES: UNLESS OTHERWISE SPECIFIED.
- ALL PARTS SHALL BE MANUFACTURED IN ACCORDANCE WITH ASI SPECIFICATION 20008225 (LIGO E048225).
 - REMOVE ALL BURRS AND SHARP EDGES .005-.015.
 - MACHINE FILLET RADII .003-.015.
 - MARK PART NUMBER WITHOUT 'P' EXTENSION AND SERIAL NUMBER IN LOCATION APPROXIMATELY AS SHOWN USING 0.13 INCH HIGH CHARACTERS IN ACCORDANCE WITH 20006686, TYPE I, CLASSES 4, 5, OR 6. SERIAL NUMBERS START AT 001 FOR FIRST PART AND PROCEED CONSECUTIVELY. PARTS TOO SMALL TO MARK SHALL BE IDENTIFIED IN ACCORDANCE WITH 20006686, TYPE II.
 - MARK PART NUMBER WITH 'P' EXTENSION IN APPROXIMATE LOCATION SHOWN. USE ANY METHOD THAT WILL NOT RUB OFF OR SMUDGE UNDER NORMAL HANDLING. THIS MARKING DOES NOT NEGATE NOTE 4 AND WILL BE REMOVED DURING SUBSEQUENT OPERATIONS DEPICTED IN DRAWING 20007838.
 - THREADED HOLES SHALL BE PRODUCED TO A .004-.006 OVERSIZE CONDITION ON THE PITCH DIAMETER BASED ON A 2B CONDITION. THIS DOES NOT APPLY TO THREADED INSERT HOLES.
 - COUNTERSINK 82° ALL TAPPED HOLES TO MAJOR DIAMETER +.015/-.000.
 - COUNTERSINK 82° ALL DRILLED HOLES .015-.030 DEEP BOTH SIDES.
 - WEIGH AND RECORD MASS TO THE NEAREST 0.1 LB ON INSPECTION REPORT AFTER FINAL MACHINING. ESTIMATED WEIGHT IS 22.4 LBS.

20007829-1P									
QTY REQD	ITEM NO	REF DES	CAGE NO	PART OR IDENTIFYING NO	NOMENCLATURE OR DESCRIPTION	SPECIFICATION	MATERIAL OR NOTE	ZONE	
PARTS LIST									
CONTRACT NO		UNLESS OTHERWISE SPECIFIED DIMENSIONS ARE IN INCHES		TOLERANCES		DECIMALS ANGLES		XX ±.03 XXX ±.010 ±1/2°	
MACHINE FINISH		125		DWN JACQUES LARAMEE 07/12/04		PROJ ENGR STRS		CHK MATL	
MATERIAL		AL ALY 6061-T651 PER AMS-QQ-A-250/11		CONFIG PROJ		SIZE		CAGE CODE	
20007838		1388		20007829		E		1KNU9	
NEXT ASSEMBLY		PROJECT CODE		APPLICATION		SCALE 1:1		UNCLASSIFIED SHEET 1 OF 2	

THIS DOCUMENT MAY CONTAIN ITAR CONTROLLED INFORMATION AND/OR COMMERCE CONTROLLED INFORMATION EXPORT RESTRICTIONS MAY APPLY

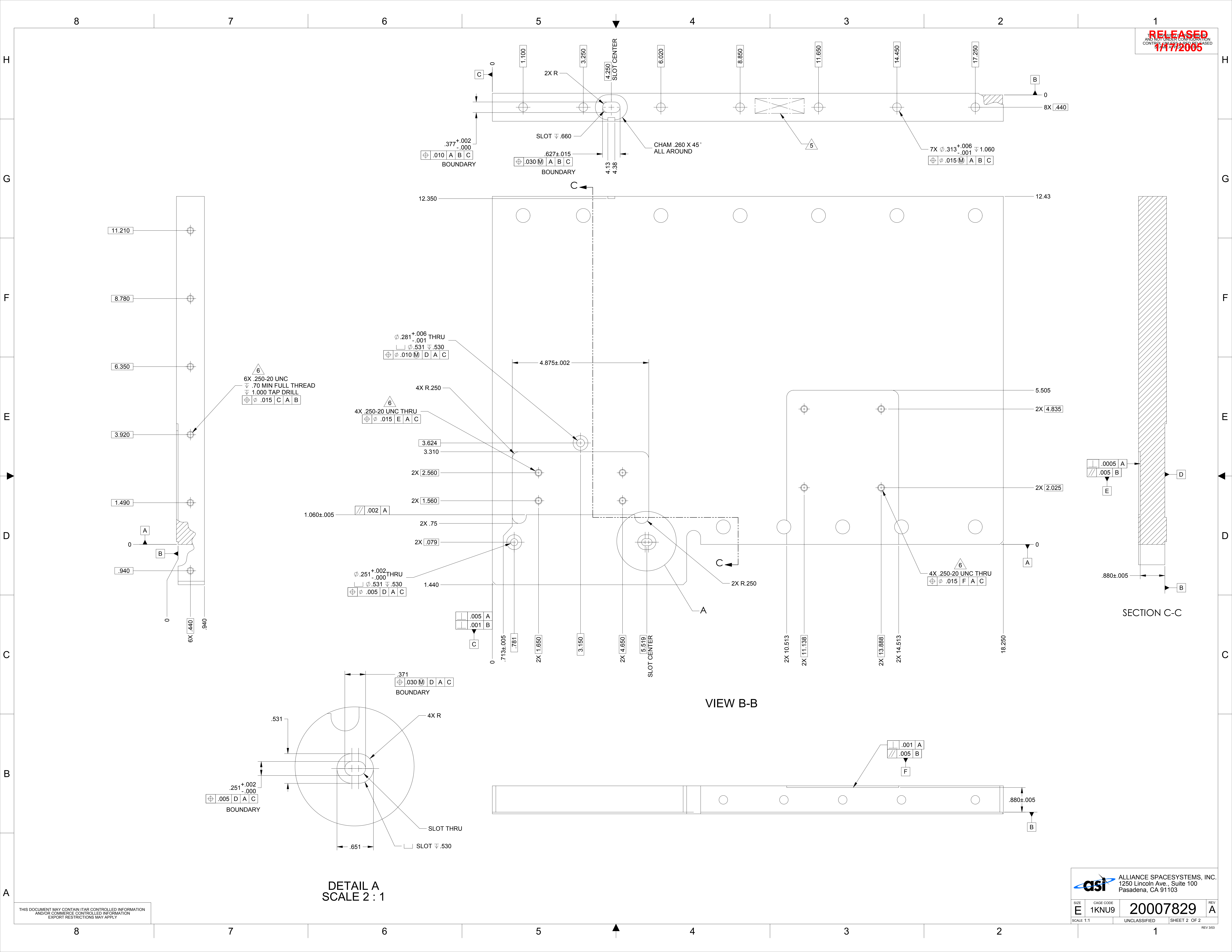
ALLIANCE SPACESYSTEMS, INC.
1250 Lincoln Ave., Suite 100
Pasadena, CA 91103

RELEASED
11/7/2005

asi

SIDE PLATE
L-4C INTERFACE STAGE 1
LIGO-D047829-A

20007829



THIS DOCUMENT MAY CONTAIN ITAR CONTROLLED INFORMATION AND/OR COMMERCE CONTROLLED INFORMATION EXPORT RESTRICTIONS MAY APPLY

DETAIL A
SCALE 2 : 1

VIEW B-B

SECTION C-C

		ALLIANCE SPACESYSTEMS, INC. 1250 Lincoln Ave., Suite 100 Pasadena, CA 91103	
SIZE E	CAGE CODE 1KNU9	REV 20007829	REV A
SCALE 1:1		UNCLASSIFIED	SHEET 2 OF 2