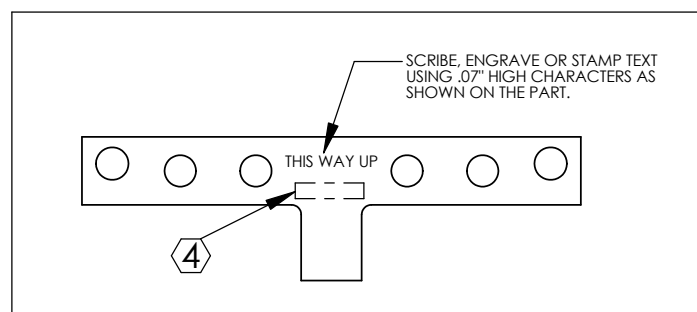
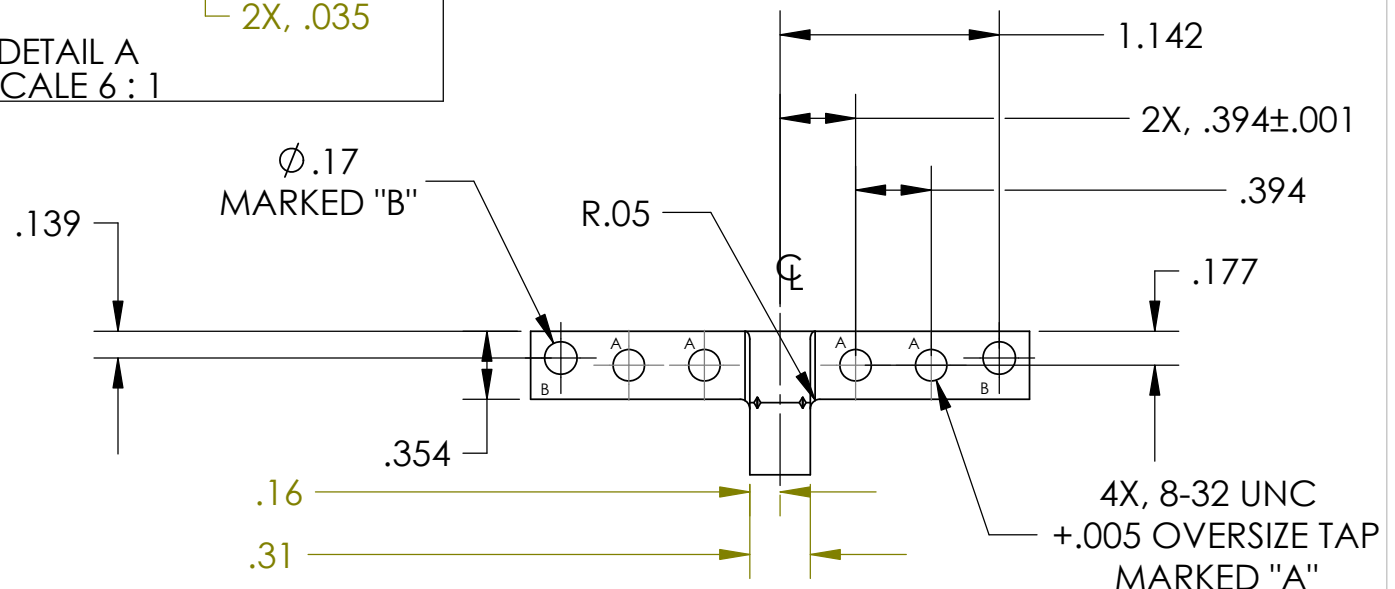
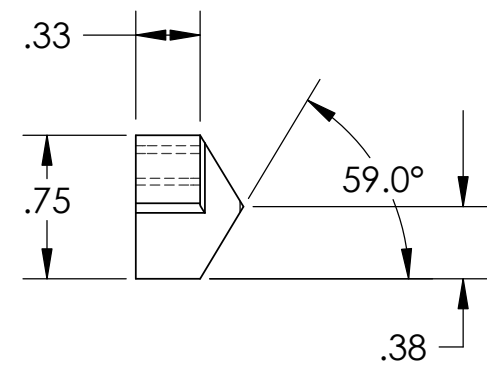
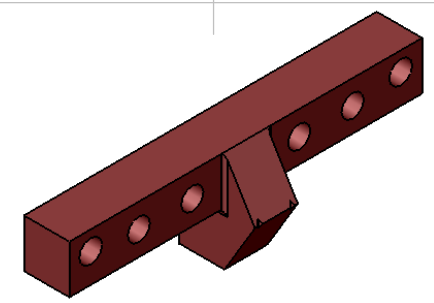
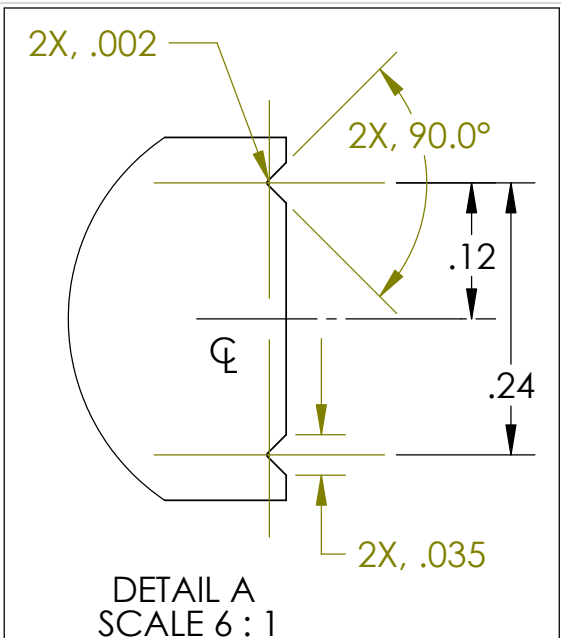
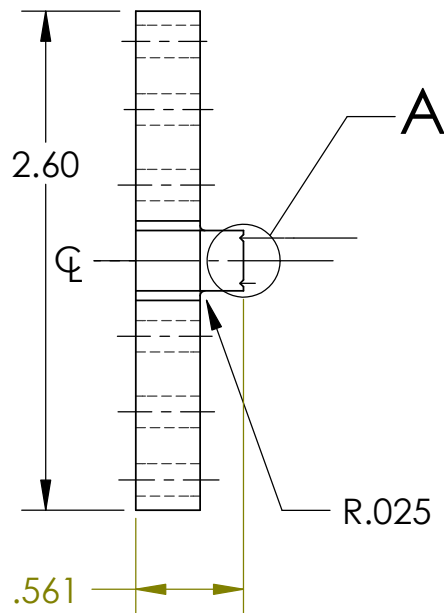


REV.	DATE	DCN #	DRAWING TREE #
A	FEB 17th 2006	E060057-00	E060059-A



NOTES: (UNLESS OTHERWISE SPECIFIED)

- DO NOT SCALE FROM DRAWING
 - REMOVE ALL SHARP EDGES, R.02 MAX.
 - ALL MACHINING FLUIDS SHALL BE WATER SOLUBLE AND FREE OF SULFUR, CHLORINE AND SILICONE, SUCH AS CINCINNATI MILACRON'S CIMTECH 410 (STAINLESS STEEL)
- ④ SCRIBE, ENGRAVE OR STAMP DRAWING PART NUMBER ON NOTED SURFACE OF PART AND THEN A THREE DIGIT SERIAL NUMBER. SERIAL NUMBERS START AT 001 FOR THE FIRST PART AND PROCEED CONSECUTIVELY. USE .07" HIGH CHARACTERS. EXAMPLE: D020188-001. A VIBRATORY TOOL MAY BE USED. REF: DESIGN BY C TORRIE & M P-LLOYD.

DIMENSIONS ARE IN INCHES

TOLERANCES:
 .XX ± 0.01
 .XXX ± 0.005

ANGULAR ± 0.5 °

MATERIAL
300 SSSL

FINISH
32 μ inch

	NAME	DATE
DRAWN	C Torrie	27 JAN 04
CHECKED	J Romie	30 AUG 04
APPROVED		

CALIFORNIA INSTITUTE OF TECHNOLOGY MASSACHUSETTS INSTITUTE OF TECHNOLOGY IGR, GLASGOW UNIVERSITY GEO 600 GROUP	
SYSTEM	ADVANCED LIGO
SUB-SYSTEM	SUS
NEXT ASSY	ETM C_PTYPE PEN MASS, D040132
PART NAME	PEN MASS WIRE BREAK OFF & CLAMP
SIZE	DWG. NO. D040420
REV.	A
SCALE: 1:2	PROJECTION:
SHEET 1 OF 1	