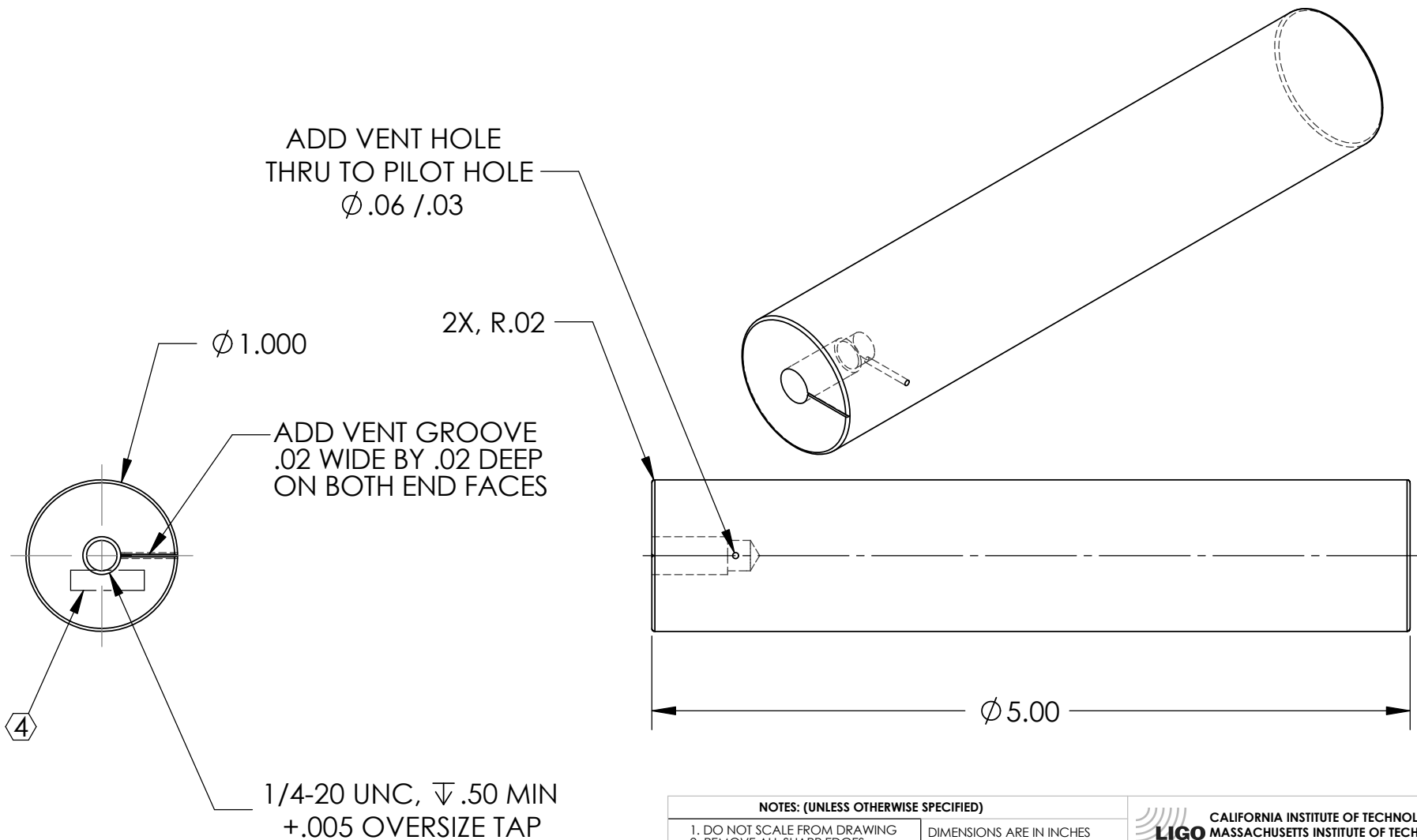


REV.	DATE	DCN #	DRAWING TREE #
A	FEB 17th 2006	E060057-00	E060059-A



NOTES: (UNLESS OTHERWISE SPECIFIED)

- DO NOT SCALE FROM DRAWING
 - REMOVE ALL SHARP EDGES, R.02 MAX.
 - ALL MACHINING FLUIDS SHALL BE WATER SOLUBLE AND FREE OF SULFUR, CHLORINE AND SILICONE, SUCH AS CINCINNATI MILACRON'S CIMTECH 410 (STAINLESS STEEL)
- ④ SCRIBE, ENGRAVE OR STAMP DRAWING PART NUMBER, REVISION ON NOTED SURFACE OF PART AND THEN A THREE DIGIT SERIAL NUMBER. SERIAL NUMBERS START AT 001 FOR THE FIRST PART AND PROCEED CONSECUTIVELY. USE .07" HIGH CHARACTERS. A VIBRATORY TOOL MAY BE USED. EXAMPLE: D020188-00 SN 001

DIMENSIONS ARE IN INCHES		
TOLERANCES: .XX ± 0.03 .XXX ± 0.005		
ANGULAR ± 0.5 °		
MATERIAL 303 / 304 SSSL		
FINISH 32 μ inch		
	NAME	DATE
DRAWN	C Torrie	11 Oct 2004
CHECKED	J Romie	Oct 2004
APPROVED		

LIGO CALIFORNIA INSTITUTE OF TECHNOLOGY
 MASSACHUSETTS INSTITUTE OF TECHNOLOGY
 IGR, GLASGOW UNIVERSITY GEO 600 GROUP

SYSTEM **ADVANCED LIGO**

SUB-SYSTEM **SUS**

NEXT ASSY
 ETM CPTYPE PENULTIMATE REACTION MASS

PART NAME
 ADJUSTABLE CYLINDER FOR PITCH

SIZE **DWG. NO.**
A **D040186**

SCALE: 1:2 PROJECTION: SHEET 1 OF 1

REV. **A**