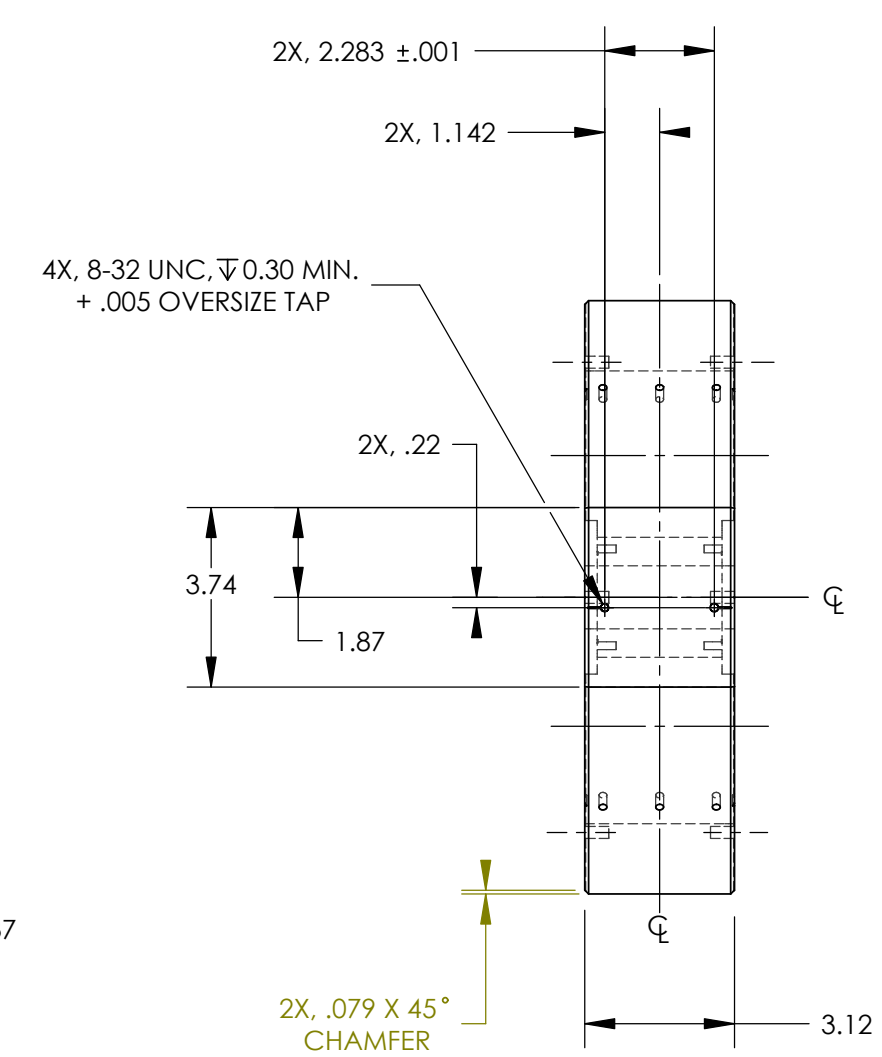
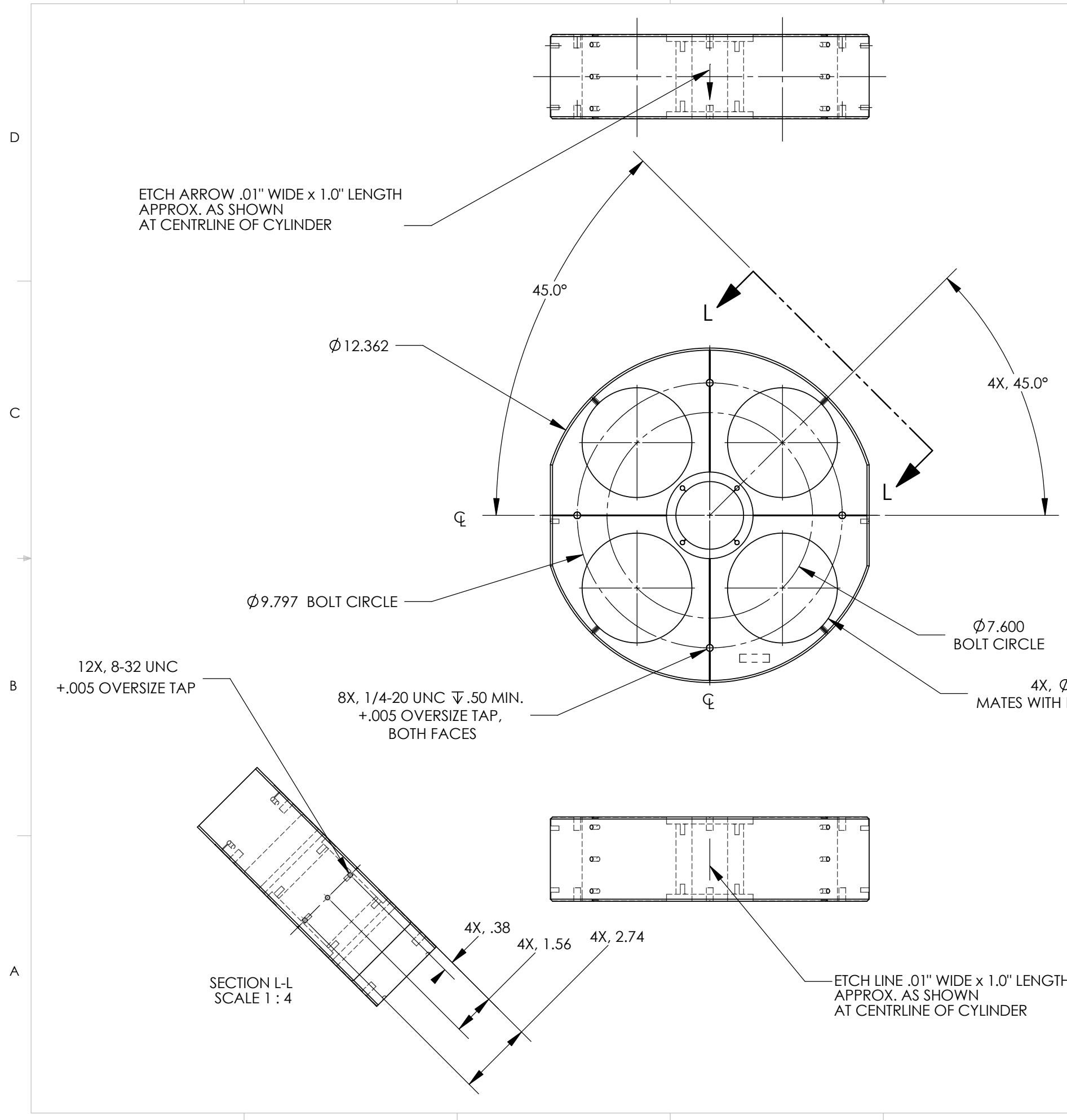
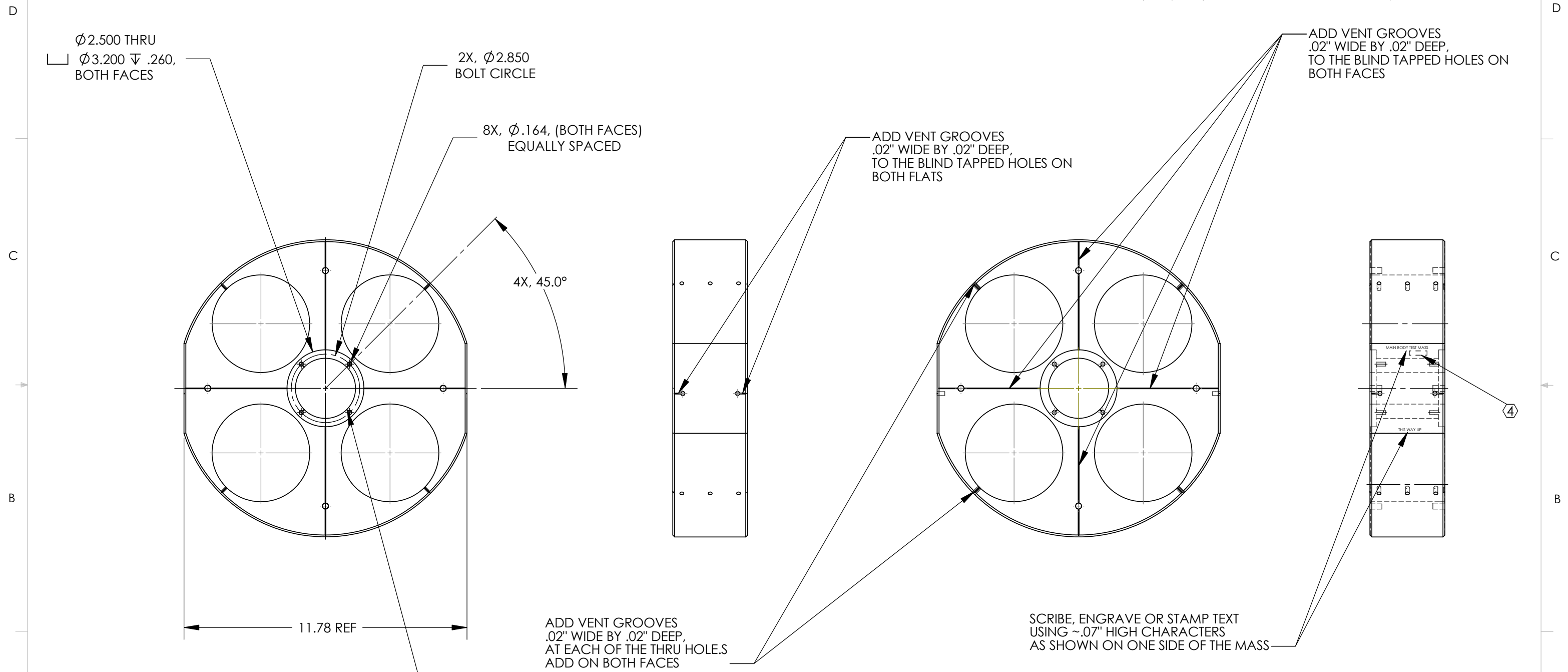


REV.	DATE	DCN #	DRAWING TREE #
A	FEB 17th 2006	E060057-00	E060059-A



NOTES: (UNLESS OTHERWISE SPECIFIED)			PARTS LIST	
1. DO NOT SCALE FROM DRAWING. 2. REMOVE ALL SHARP EDGES, R.02 MIN. 3. ALL MACHINING FLUIDS SHALL BE WATER SOLUBLE AND FREE OF SULFUR, CHLORINE AND SILICONE, SUCH AS CINCINNATI MILACRON'S CIMTECH 410 (STAINLESS STEEL)			DIMENSIONS ARE IN INCHES TOLERANCES: .XX ± 0.01 .XXX ± 0.005 ANGULAR ± 0.5°	
④SCRIBE, ENGRAVE OR STAMP DRAWING PART NUMBER, REVISION ON NOTED SURFACE OF PART. AFTER THIS ADD A THREE DIGIT SERIAL NUMBER WITH PREFIX SN START AT 001 FOR THE FIRST PART AND PROCEED CONSECUTIVELY. IF APPROPRIATE USE .07" HIGH CHARACTERS. A VIBRATORY TOOL MAY BE USED. EXAMPLE: D040036-06 SN001 REFERENCE: DESIGNED WITH N. ROBERTSON & M. P-LLOYD.			MATERIAL 6061-T6-Al	
FINISH 32 μ inch			SYSTEM ADVANCED LIGO SUB-SYSTEM SUS NEXT ASSY ETM C_PTYPE TEST MASS D040038 PART NAME MAIN BODY TEST MASS	
DRAWN C Torrie 28 JAN 2004			SIZE DWG. NO. B D040036 REV. A	
CHECKED L Jones 22 MAR 2004			SCALE: NTS PROJECTION:	
APPROVED M P-Lloyd 15 SEPT 2004			SHEET 1 OF 2	

REV.	DATE	DCN #	DRAWING TREE #



NOTES: (UNLESS OTHERWISE SPECIFIED)

REFERENCE: SHEET 1 OF 2 FOR NOTES

DIMENSIONS ARE IN INCHES

TOLERANCES:
 .XX ± 0.01
 .XXX ± 0.005

ANGULAR $\pm 0.5^\circ$

MATERIAL
 6061-T6-Al

FINISH
 32 μ inch

	NAME	DATE
DRAWN	C Torrie	28 JAN 2004
CHECKED	REF SHEET	1 OF 2
CHECKED	REF SHEET	1 OF 2
APPROVED		

PARTS LIST

LIGO CALIFORNIA INSTITUTE OF TECHNOLOGY
 MASSACHUSETTS INSTITUTE OF TECHNOLOGY
 IGR, GLASGOW UNIVERSITY GEO 600 GROUP

SYSTEM
 ADVANCED LIGO

SUB-SYSTEM
 SUS

NEXT ASSY
 ETM C_PTYPE TEST MASS D040038

PART NAME
 MAIN BODY TEST MASS

SIZE DWG. NO.
 B D040036

SCALE: NTS PROJECTION: SHEET 2 OF 2

A

A