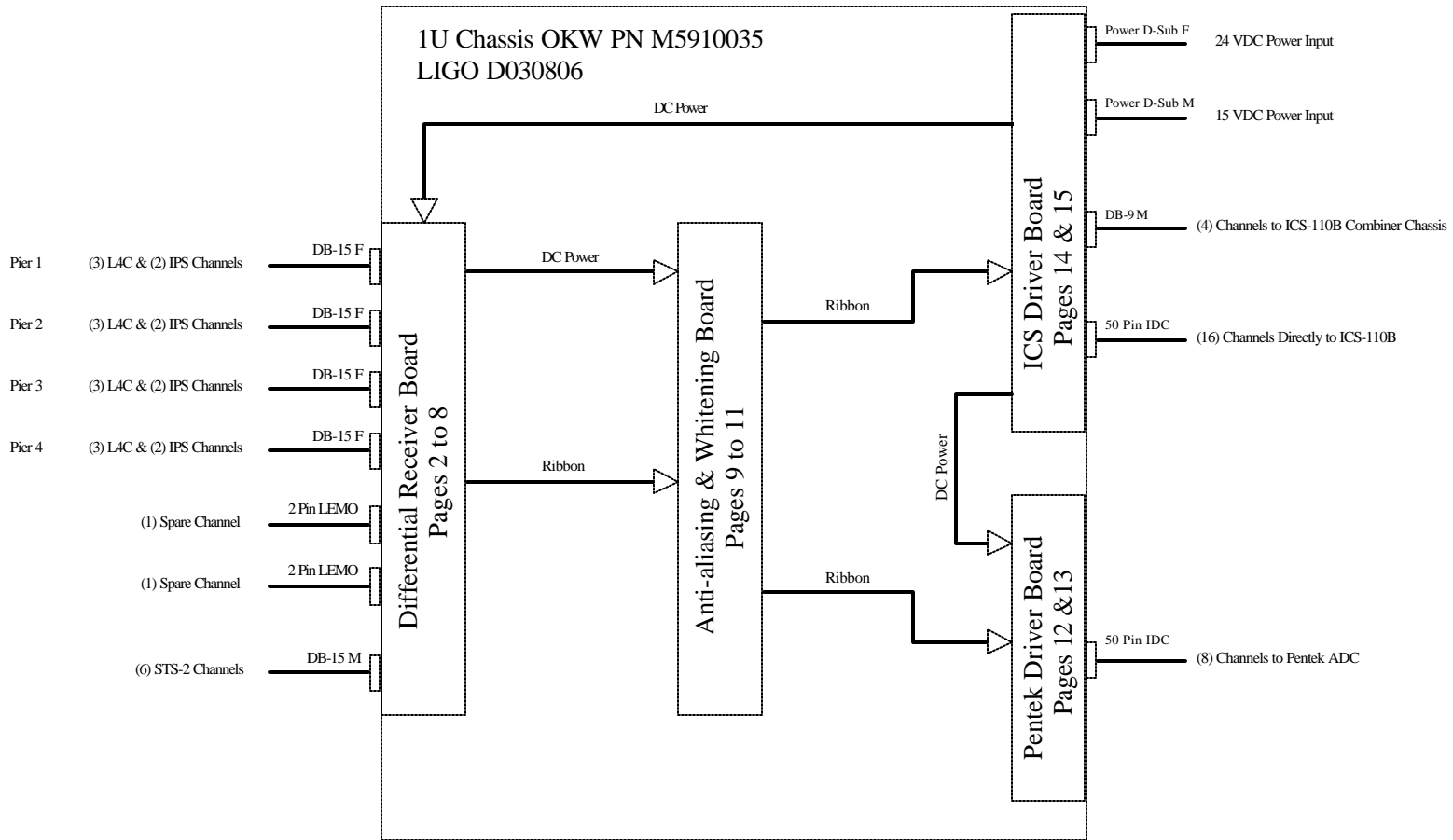
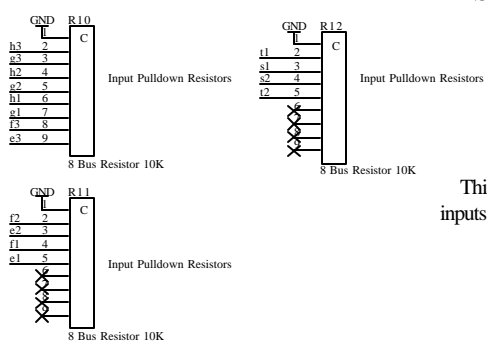


Seismic Interface Chassis Overview

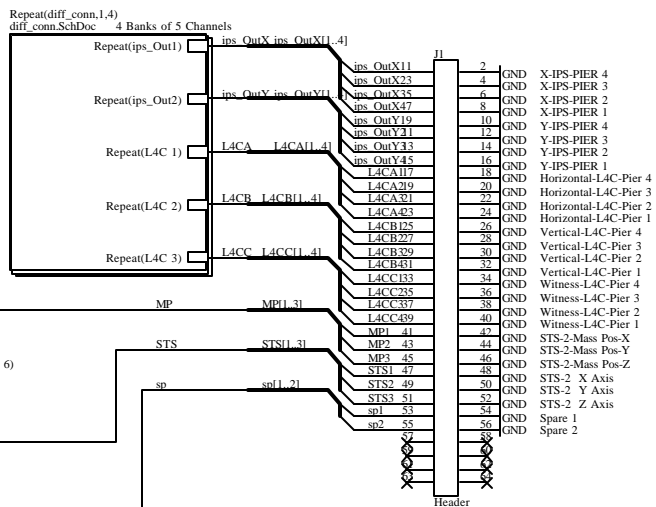


Title Seismic Interface Chassis Overview			LIGO Laboratory California Institute of Technology Massachusetts Institute of Technology		
Size: B	DCC Number: D030806	SCH / PCB Revision: A	Engineer: RS Abbott	Date: 4/6/2004	
File: C:\Rich's Files\Mycadfiles\Sei int\HEPI\SEI Interface\SEI int overview.SchDoc			Time: 3:25:34 PM		Sheet 1 of 15

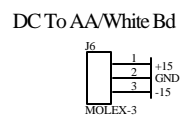
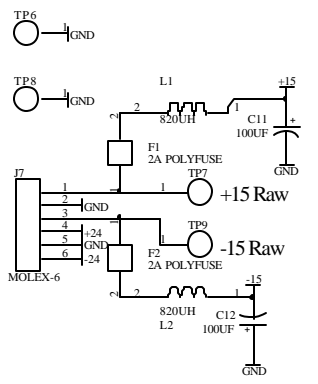
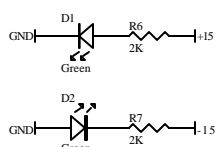
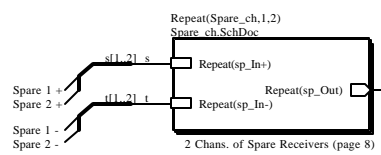
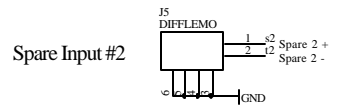
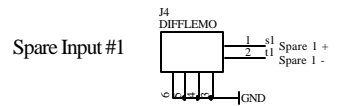
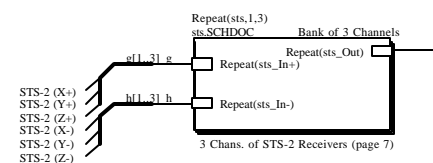
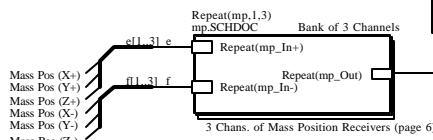
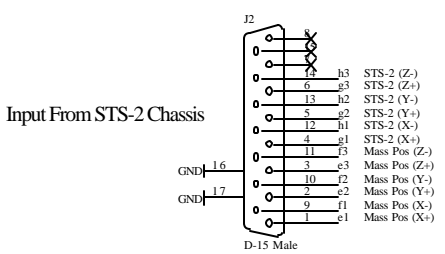
Seismic Interface Chassis Differential Inputs High Level View



This block shows details of the 4 DB-15 inputs from the LAC/IPS field interface box
See Page 3 of 15 for details



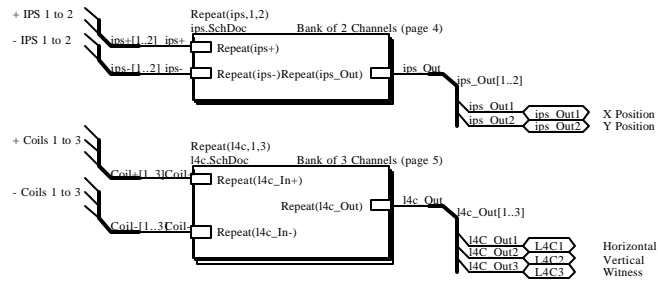
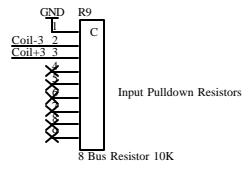
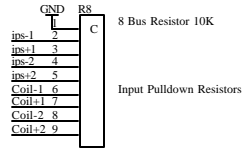
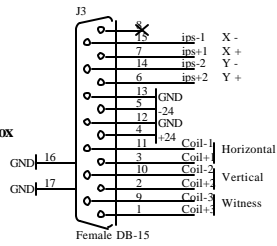
To Anti-aliasing & Whiting Board



Title SEI Interface Chassis Differential Input Board		LIGO Laboratory California Institute of Technology Massachusetts Institute of Technology		LIGO
Size: B	DCC Number: D030806	SCH / PCB Revision: A	Engineer: RS Abbott	Date: 4/6/2004
File: C:\Rich's Files\Mvccadfiles\Sei_int\HEPT\SEI Interface\diff Overview.SchDoc				Time: 2:26:16 PM
				Sheet 2 of 15

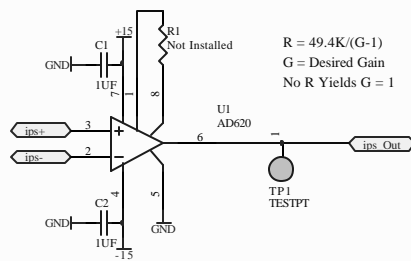
Detail of 4 D-sub Inputs from L4C & IPS Field Boxes

Input From Remote L4C Box
1 of 4



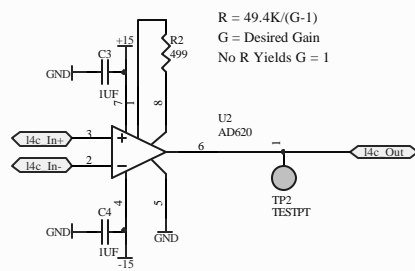
Title LAC/IPC Connection Details			LIGO Laboratory California Institute of Technology Massachusetts Institute of Technology		LIGO
Size: B	DCC Number: D030806	SCH / PCB Revision: A	Engineer: RS Abbott	Date: 4/6/2004	Time: 2:26:16 PM
File: C:\Rich's Files\Mvcadfiles\Sei_int\HEPI\SEI Interface\diff_conn.SchDoc					Sheet 3 of 15

Inductive Position Sensor Details



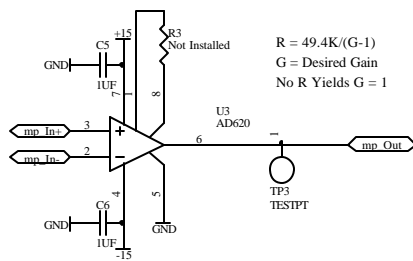
Title <i>Inductive Position Sensor Details</i>			<i>LIGO Laboratory</i> <i>California Institute of Technology</i> <i>Massachusetts Institute of Technology</i>		
Size: B	DCC Number: D030806	SCH / PCB Revision: A	Engineer: RS Abbott	Date: 6/16/2004	Time: 10:37:39 AM
File: C:\Rich's Files\Mvcafiles\Sei_int\HEPT\SEI Interface\ips.SchDoc				Sheet 4 of 15	

L4C Channel Details



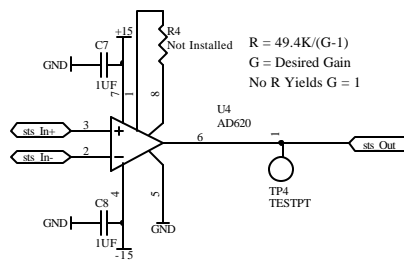
Title L4C Differential Receiver			LIGO Laboratory California Institute of Technology Massachusetts Institute of Technology		LIGO
Size: B	DCC Number: D030806	SCH / PCB Revision: A	Engineer: RS Abbott	Date: 6/16/2004	
File: C:\Rich's Files\Mvcafiles\Sei_int\HEPT\SEI Interface\I4c.SchDoc				Time: 10:38:05 AM	Sheet 5 of 15

Mass Position Channel Details



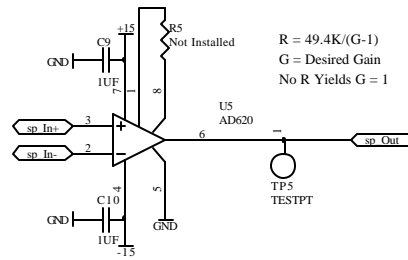
Title Mass Position Differential Receiver			LIGO Laboratory California Institute of Technology Massachusetts Institute of Technology		LIGO
Size: B	DCC Number: D030806	SCH / PCB Revision: A	Engineer: RS Abbott	Date: 4/6/2004	Time: 2:26:16 PM
File: C:\Rich's Files\Mvcafiles\Sei_int\HEPI\SEI Interface\mp.SCHDOC					Sheet 6 of 15

STS-2 Channel Details



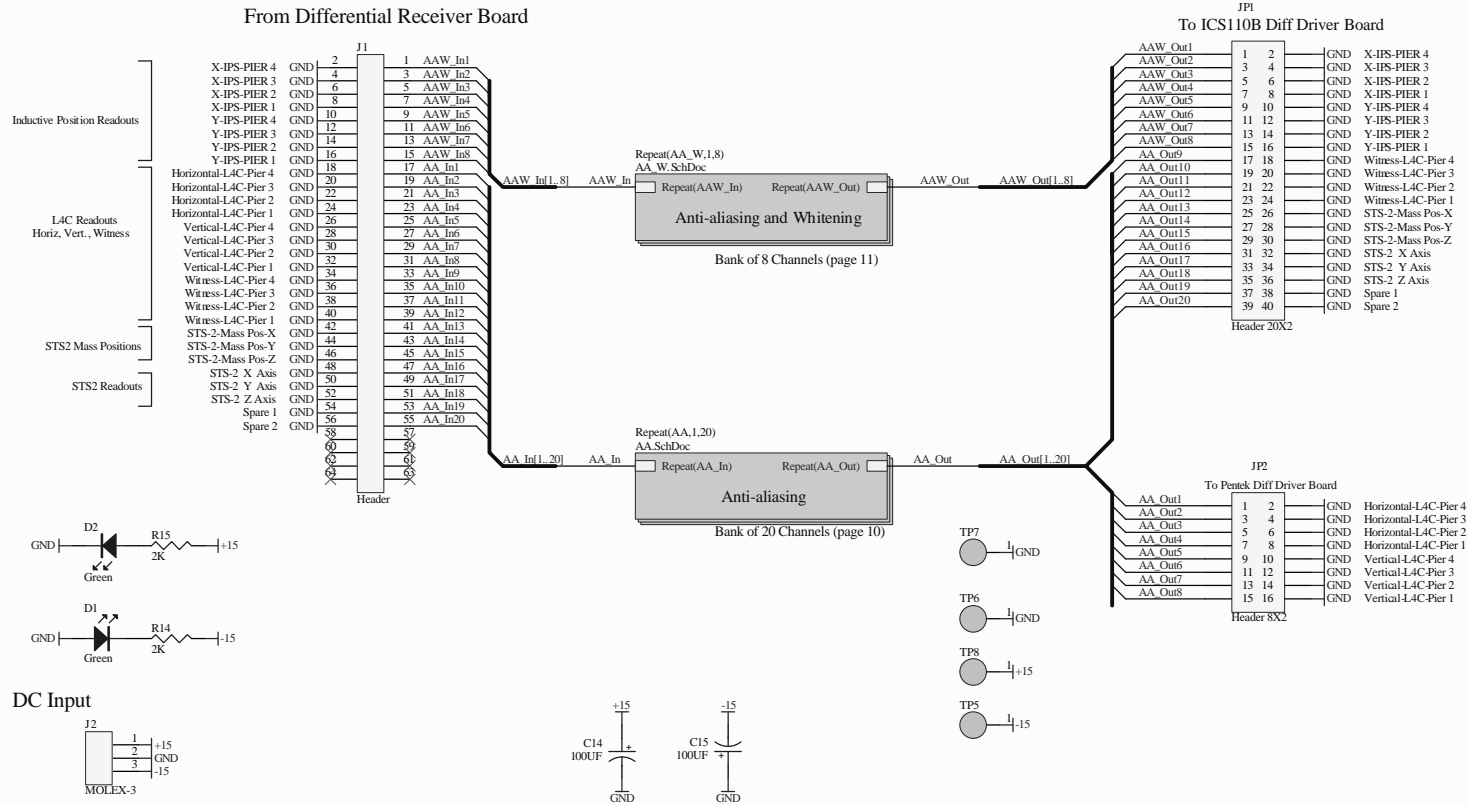
Title STS-2 Differential Receiver			LIGO Laboratory California Institute of Technology Massachusetts Institute of Technology		LIGO
Size: B	DCC Number: D030806	SCH / PCB Revision: A	Engineer: RS Abbott	Date: 4/6/2004	
File: C:\Rich's Files\Mvcafiles\Sei_int\HEPI\SEI_Interfaces\SCHDOC			Time: 2:26:17 PM		Sheet 7 of 15

Spare Channel Schematic Detail

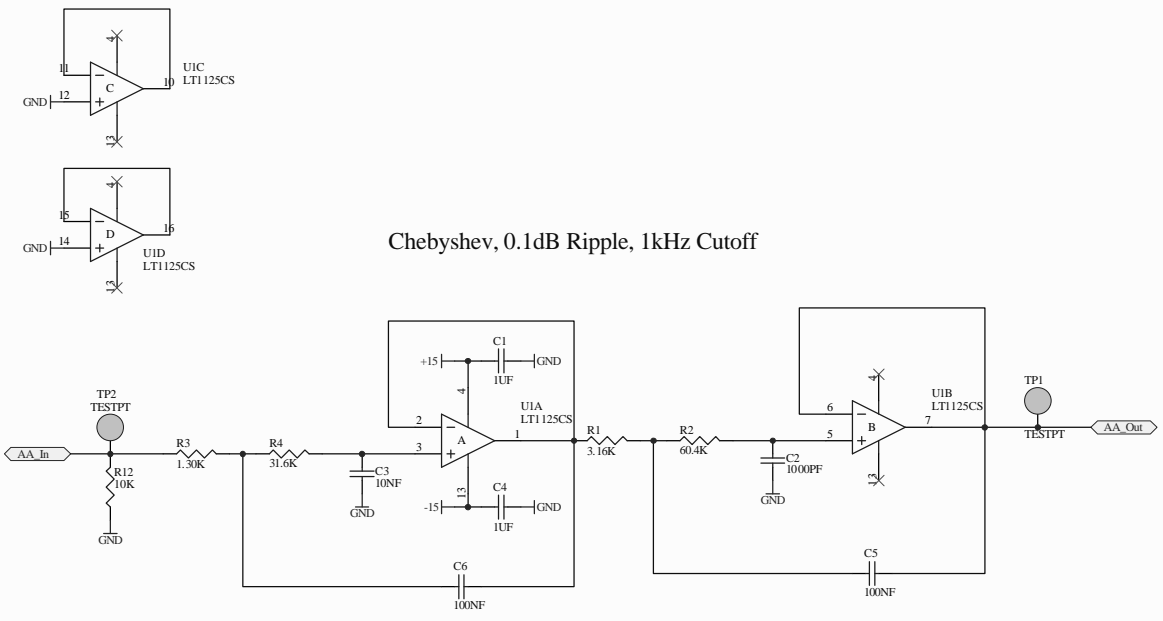


Title Spare Channel Differential Receiver			LIGO Laboratory California Institute of Technology Massachusetts Institute of Technology		LIGO
Size: B	DCC Number: D030806	SCH / PCB Revision: A	Engineer: RS Abbott	Date: 4/6/2004	
File: C:\Rich's Files\Mvcafiles\Sei_int\HEPI\SEI Interface\Spare_ch.SchDoc				Time: 2:26:17 PM	
				Sheet 8	of 15

Connector View of AA and Whitening Board



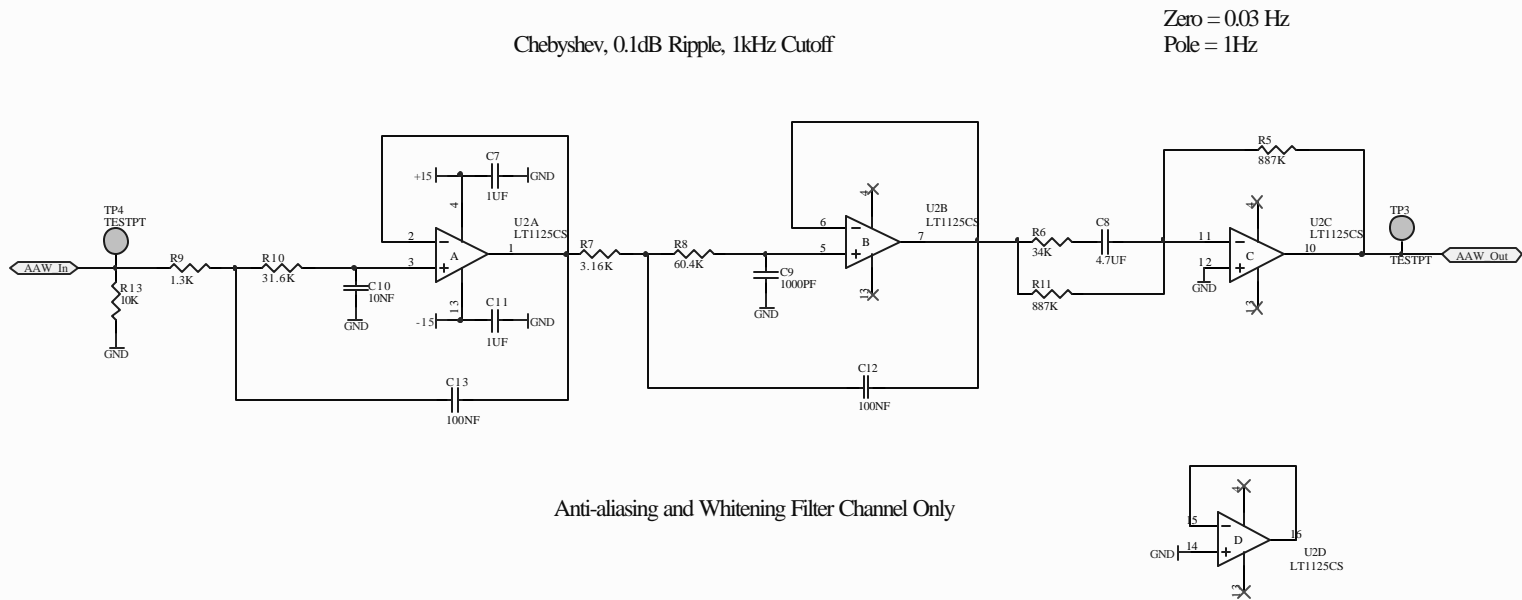
Title AA & Whitening Board Overview		LIGO Laboratory California Institute of Technology Massachusetts Institute of Technology		LIGO	
Size: B	DCC Number: DO30806	SCH / PCB Revision: A	Engineer: RS Abdon	Date: 4/6/2004	Time: 2:27:28 PM
File: C:\Rich's Files\Mycadfiles\Sei_int\HEPT\SEI_Interface\AA_White\AA_board.SchDoc					
				Sheet 9 of 15	



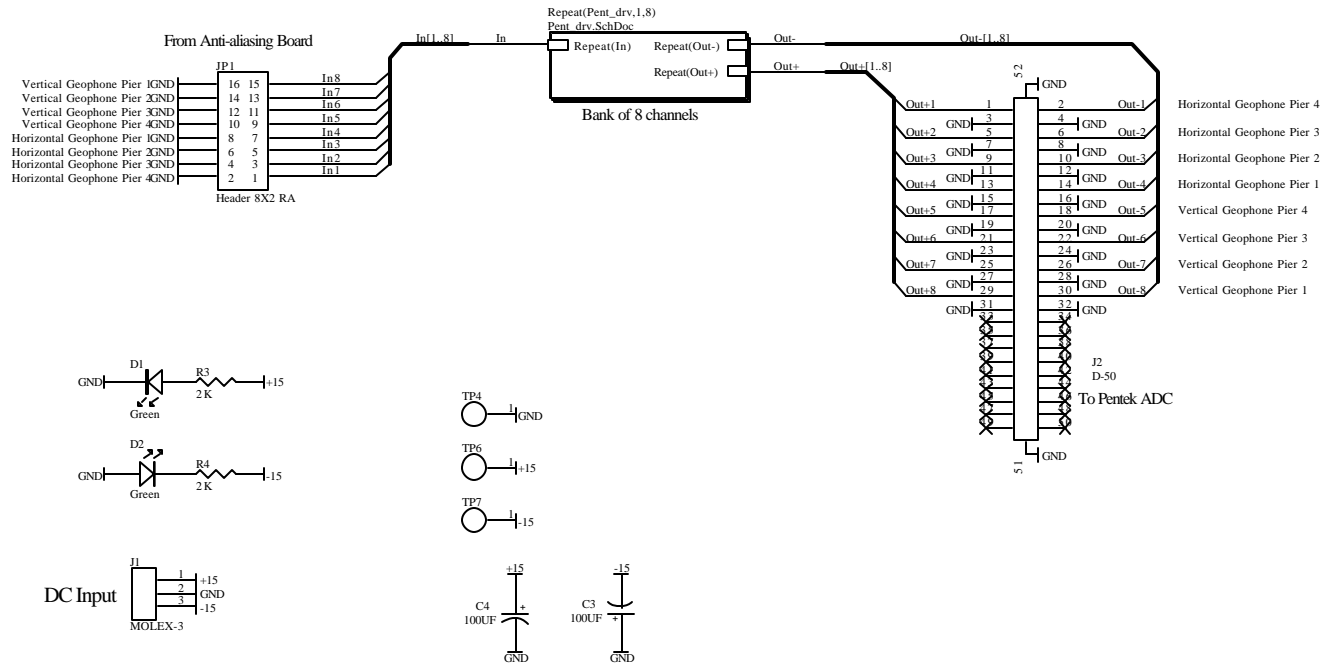
Chebyshev, 0.1dB Ripple, 1kHz Cutoff

Anti-aliasing Filter Channel Only

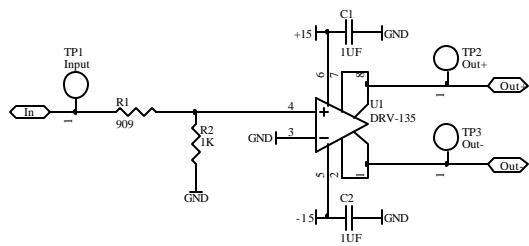
Title AA Filter		LIGO Laboratory California Institute of Technology Massachusetts Institute of Technology		LIGO	
Size: B	DCC Number: D030806	SCH / PCB Revision: A	Engineer: RS Abdon		Date: 4/6/2004
File: C:\Rich's Files\MyCADfiles\Sei_int\HEPT\SEI_Interface\AA_White\AA.SchDoc			Time: 2:27:28 PM		Sheet 10 of 15




Title AA & Whitering Filter		LIGO Laboratory California Institute of Technology Massachusetts Institute of Technology		LIGO
Size: B	DCC Number: D030806	SCH / PCB Revision: A	Engineer: RS Abbott	Date: 6/16/2004
File: C:\Rich's Files\Mvcafiles\Sei_int\HEPT\SEI Interface\AA_White\AA_W_SchDoc				Time: 10:38:33 AM
				Sheet 11 of 15

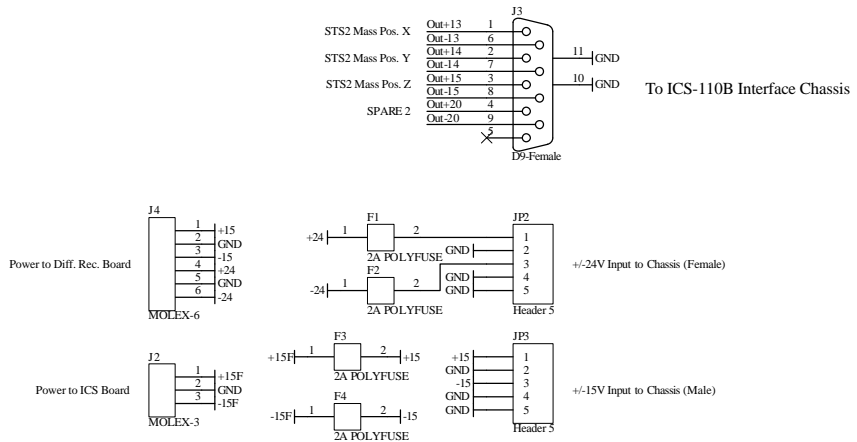
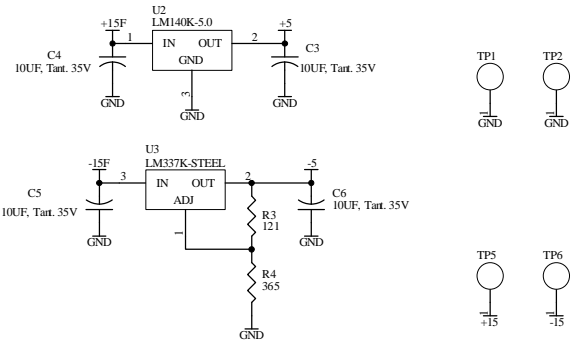
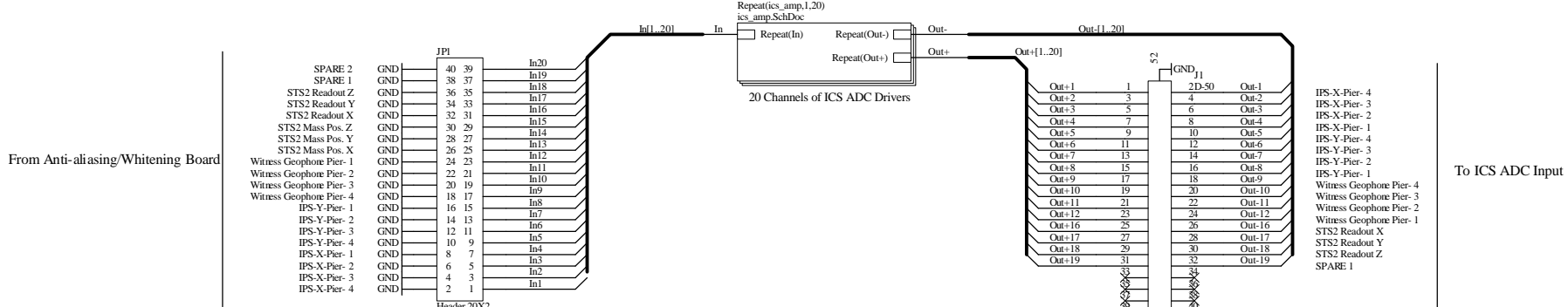


Title Pentek Interface Board		LIGO Laboratory California Institute of Technology Massachusetts Institute of Technology		LIGO
Size: B	DCC Number: D030806	SCH / PCB Revision: A	Engineer: RS Abbott	Date: 4/6/2004
File: C:\Rich's Files\Mvcafiles\Sei_int\HEPI\SEI Interface\Pentek_int\Pent_bd\SchDoc				Time: 2:54:24 PM
				Sheet 12 of 15



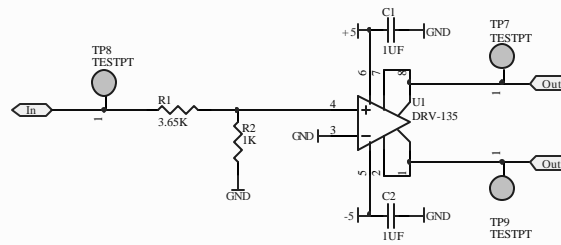
Title Pentek Differential Driver		LIGO Laboratory California Institute of Technology Massachusetts Institute of Technology		LIGO 
Size: B	DCC Number: D030806	SCH / PCB Revision: A	Engineer: RS Abbott	
File: C:\Rich's Files\Mvcafiles\Sei_int\HEPI\SEI		Interface\Pentek_int\Pent_drvy.SchDoc		Time: 2:54:24 PM
				Sheet 13 of 15

Interface Details to ICS-110B ADC



Title		LIGO Laboratory California Institute of Technology Massachusetts Institute of Technology		LIGO
Size: B		DCC Number: D030806	SCH / PCB Revision: A	
Date: 4/6/2004		Time: 2:56:38 PM		Sheet 14 of 15

ICS Differential Driver Detail



Title ICS ADC Differential Driver		LIGO Laboratory California Institute of Technology Massachusetts Institute of Technology		LIGO
Size: B	DCC Number: D030806	SCH / PCB Revision: A	Engineer: RS Abbott	Date: 6/16/2004
File: C:\Rich's Files\Mvcadfiles\Sei_int\HEPT\SEI Interface\ICS_int\ics_amp.SchDoc				Time: 10:04:47 AM
				Sheet 15 of 15