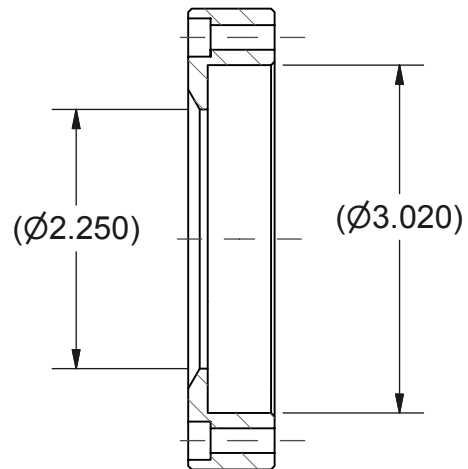
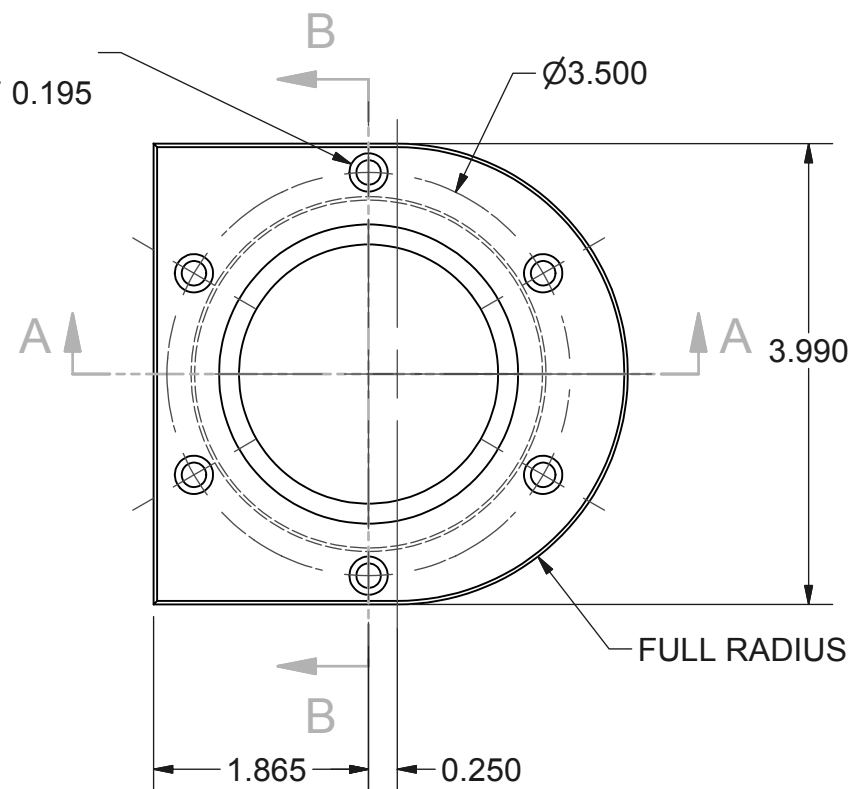


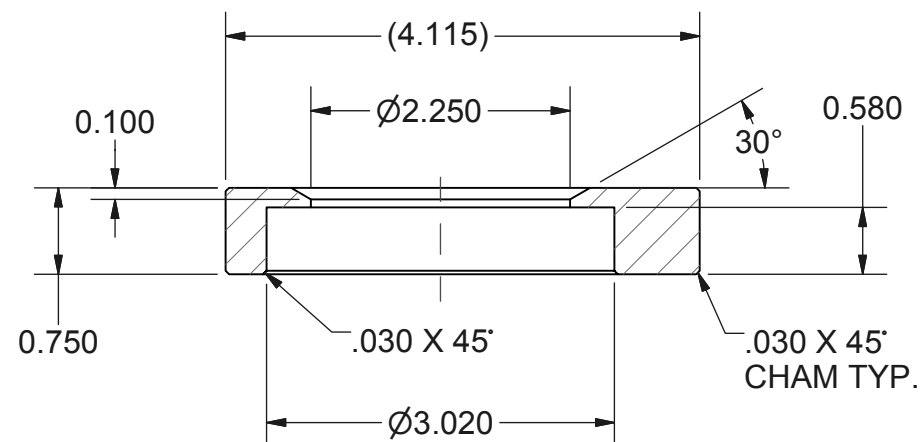
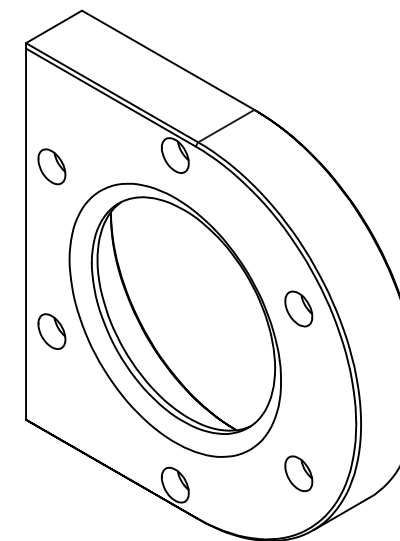
DWG. NO. 031111-1-02

Rev	Description	Drawn	Date	App'd	ECO
NC	NEW	LF	11/19/2003		11261
NC1	SPLIT CLAMPING RING, REMOVED ORING GROOVE	LF	12-03-03		11261

6X Ø0.213 THRU
 □ Ø0.332 ▽ 0.195
 60° APART



SECTION B-B
 SCALE 0.60 : 1



SECTION A-A
 SCALE 0.60 : 1

NOTES:

- METAL WORKING LUBRICANTS WHICH CONTAIN SULFUR OR SILICONE ARE PROHIBITED.
- ONLY WATER-SOLUBLE CUTTING FLUIDS ARE PERMITTED.
- BREAK ALL SHARP CORNERS .005 RADIUS MAX.
- 32 FINISH ON ALL MACHINED SURFACES UNLESS OTHERWISE SPECIFIED.
- PARTS SHALL BE CLEAN AND FREE FROM LOOSE CONTAMINANTS, OIL AND GREASE.
- MATERIAL: 3/4" THICK ALUMINUMUM PLATE

DO NOT SCALE DRAWING.

THIS DOCUMENT SHALL NOT BE REPRODUCED, NOR SHALL THE INFORMATION CONTAINED HEREIN BE USED BY OR DISCLOSED TO OTHERS EXCEPT AS EXPRESSLY AUTHORIZED BY NOR-CAL PRODUCTS.

Unless otherwise specified
 Dimensions in Inches
 .X=± 0.035
 .XX=± 0.020
 .XXX=± 0.005
 ANGLES ± 1/2'
 SCALE 1:2

Inventor File No: 031111-102



Nor-Cal Products, Inc.
 1967 South Oregon St./P.O. Box 518,
 Yreka, CA 96097
 1-800-824-4166 or 1-530-842-4457

TITLE EXTERNAL CLAMPING FLANGE

Customer LIGO

Date: 11/19/2003 DRAWN: LF CHECKED:

Sheet: 1 OF 1 DWG NO: 031111-1-02 REV: NC1

DWG. NO. 031111-1-02