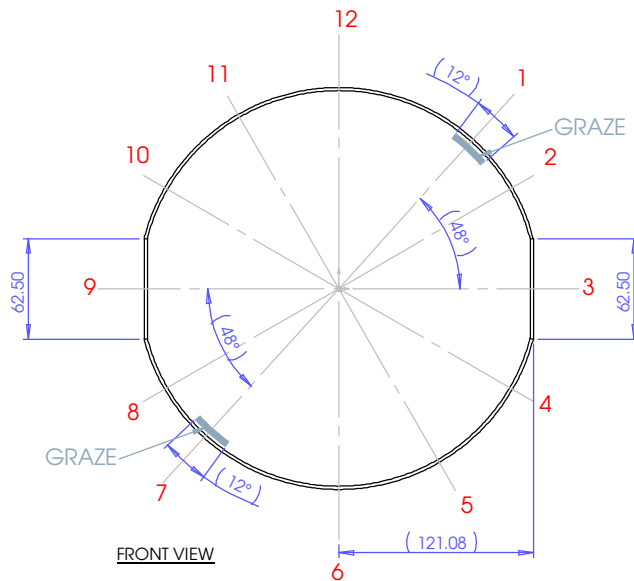
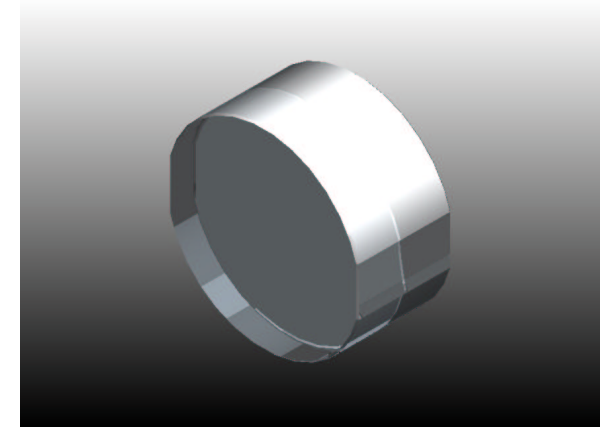


TOP VIEW

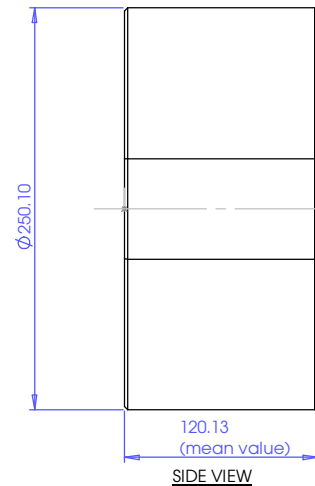
REFERENCE MARK ON BARREL OF MASS

MARK	MEASUREMENT (mm)
12	120.14
1	120.11
2	120.12
3	120.15
4	120.09
5	120.1
6	120.14
7	120.12
8	120.15
9	120.2
10	120.11
11	120.1
Σ	1441.53
mean	120.13

TABLE "A"



FRONT VIEW



SIDE VIEW

NOTES:

1) THE DIMENSIONS OF THE SAPPHIRE MASS SUPPLIED WERE READ USING A DIGITAL HEIGHT GAUGE. THE READING ERROR ON THESE MEASUREMENTS SHOULD BE TAKEN AS $\pm 0.05\text{mm}$.

IT IS ADVISABLE THAT ALL DIMENSIONS OF THE MASS ARE CHECKED PRIOR TO THE INITIALISATION OF ANY PROCESS.

2) MEASUREMENTS OF THICKNESS WERE TAKEN AT THE GENERAL SPACING "SUGGESTED" IN THE 'FRONT VIEW'. THESE MEASUREMENTS ARE SHOWN IN TABLE "A", AND WIELDED A MEAN VALUE OF 120.13mm. THE MASS IS NOT WEDGED.

3) MEASUREMENTS TAKEN AT POINTS '1' AND '7' (AS SHOWN IN THE 'FRONT VIEW') COINCIDE WITH A "GRAZE" THAT APPEARS TO RUN DIAGONALLY ACROSS THE MASS IN THE POSITION INDICATED.

NOTES: (UNLESS OTHERWISE SPECIFIED)

MANUFACTURE NOTES

(SEE NOTES ABOVE)

DIMENSIONS ARE IN MILLIMETERS

GENERAL TOLERANCES:

$\pm 0.05\text{mm}$ (reading error)

Angular: $\pm 1^\circ$

MATERIAL: SAPPHIRE

FINISH: N/A

QUANTITY:

DRAWN RAJ 20/10/03

CHK'D PSI/SH/02 23/10/03

DO NOT SCALE FROM DRAWING

A3 LANDSCAPE



SYSTEM: ADVANCED LIGO

SUB-SYSTEM: SUS

ASSEMBLY: Pre-prototype sapphire test mass

PART NAME: Glasgow 'fullscale' sapphire optic

DWG NO:

D030713

REVISION

00

SCALE: 1:3

SHEET 1 OF 1