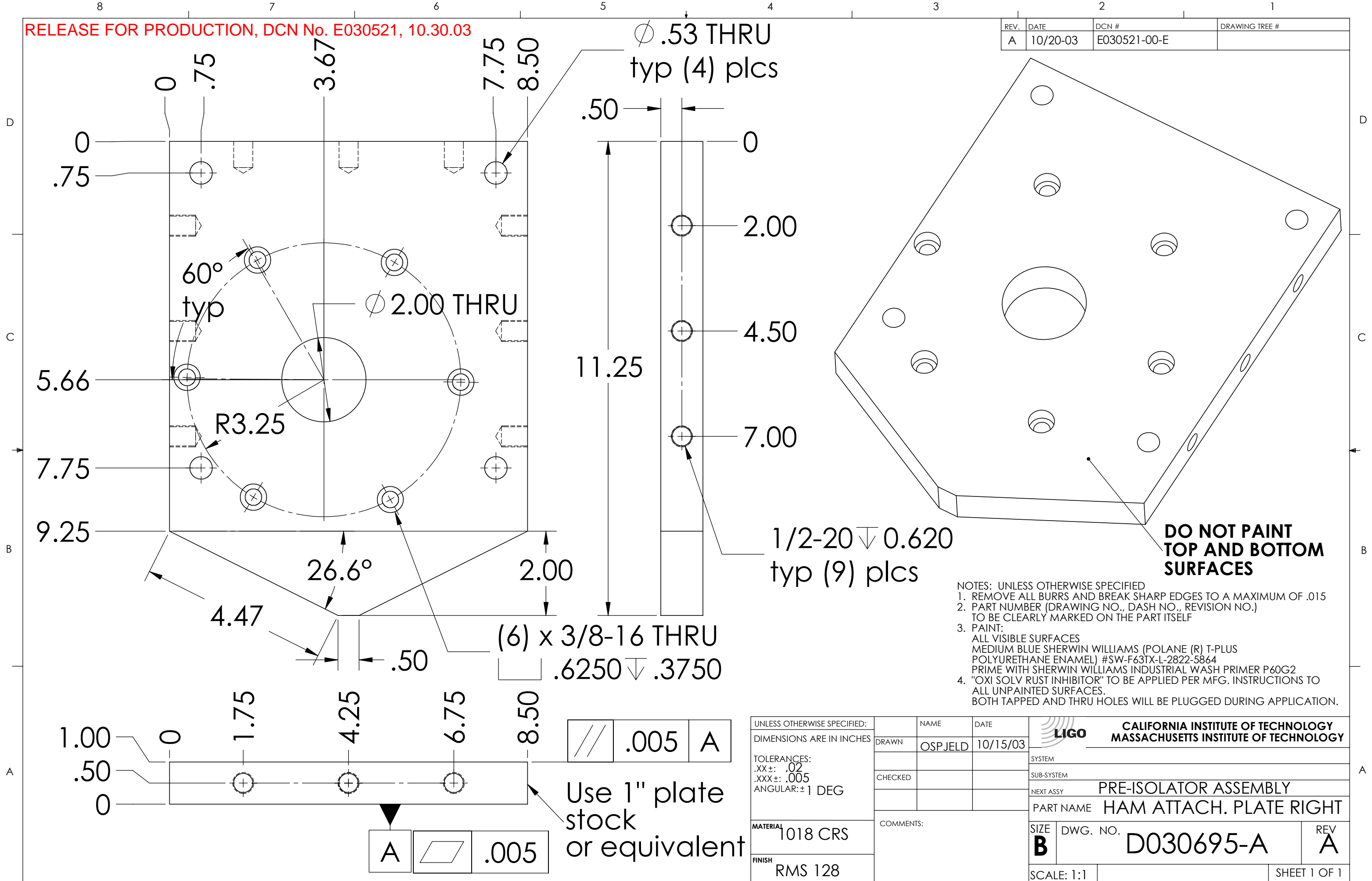


REV.	DATE	DCN #	DRAWING TREE #
A	10/20-03	E030521-00-E	



- NOTES: UNLESS OTHERWISE SPECIFIED
- REMOVE ALL BURRS AND BREAK SHARP EDGES TO A MAXIMUM OF .015
 - PART NUMBER (DRAWING NO., DASH NO., REVISION NO.) TO BE CLEARLY MARKED ON THE PART ITSELF
 - PAINT:
 ALL VISIBLE SURFACES
 MEDIUM BLUE SHERWIN WILLIAMS (POLANE (R) T-PLUS POLYURETHANE ENAMEL) #SW-F63TX-L-2822-5864
 PRIME WITH SHERWIN WILLIAMS INDUSTRIAL WASH PRIMER P60G2
 "OXI SOLV RUST INHIBITOR" TO BE APPLIED PER MFG. INSTRUCTIONS TO ALL UNPAINTED SURFACES.
 BOTH TAPPED AND THRU HOLES WILL BE PLUGGED DURING APPLICATION.

UNLESS OTHERWISE SPECIFIED: DIMENSIONS ARE IN INCHES		NAME OSP_JELD	DATE 10/15/03	CALIFORNIA INSTITUTE OF TECHNOLOGY MASSACHUSETTS INSTITUTE OF TECHNOLOGY
TOLERANCES: .XX±: .02 .XXX±: .005 ANGULAR: ± 1 DEG		CHECKED		
MATERIAL 1018 CRS	COMMENTS:			SYSTEM
FINISH RMS 128				SUB-SYSTEM
				NEXT ASSY PRE-ISOLATOR ASSEMBLY
				PART NAME HAM ATTACH. PLATE RIGHT
SIZE B	DWG. NO. D030695-A	REV A		
SCALE: 1:1			SHEET 1 OF 1	