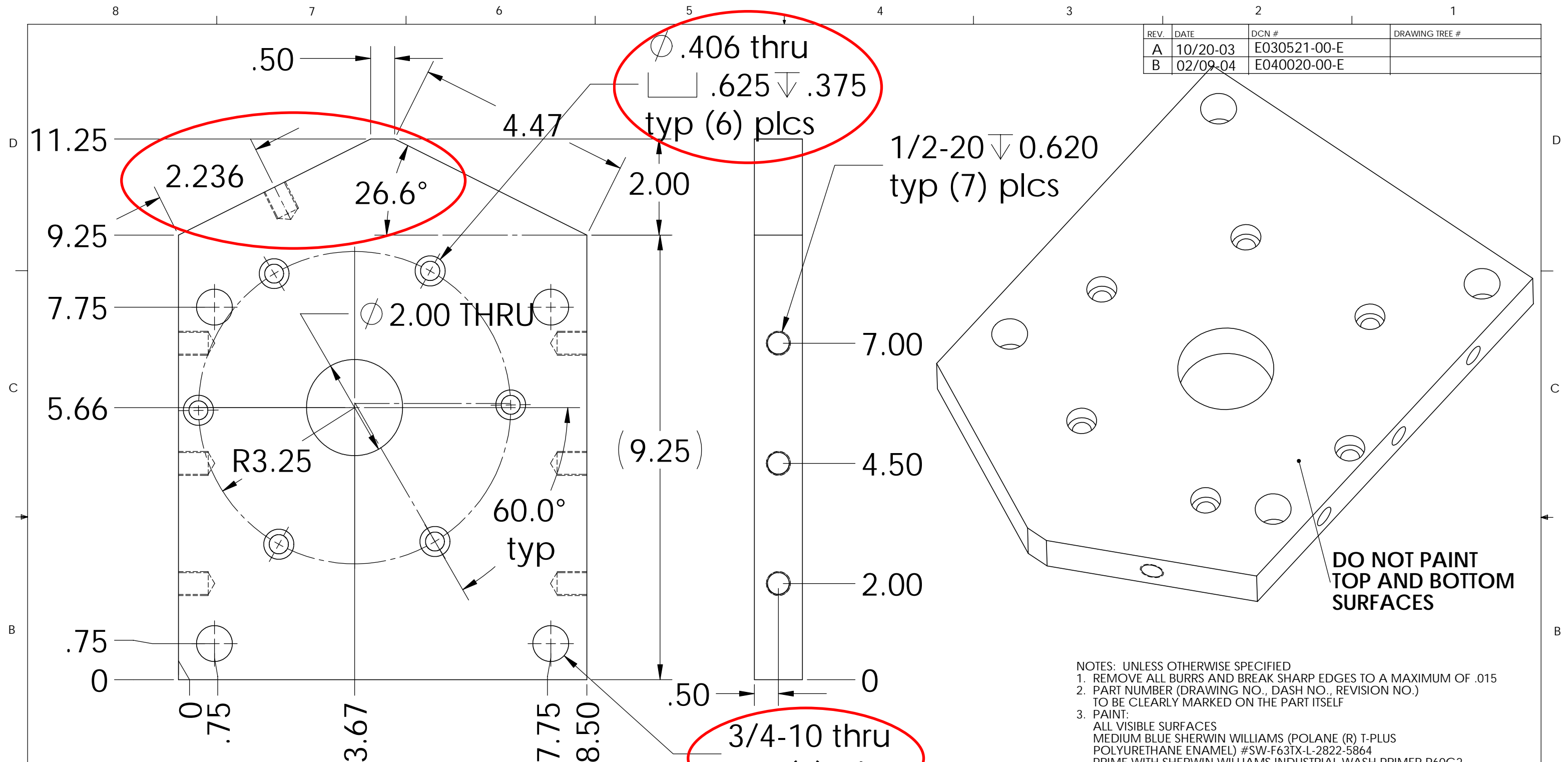


REV.	DATE	DCN #	DRAWING TREE #
A	10/20-03	E030521-00-E	
B	02/09-04	E040020-00-E	



\varnothing .406 thru
 \square .625 ∇ .375
 typ (6) plcs

2.236
 26.6°

1/2-20 ∇ 0.620
 typ (7) plcs

3/4-10 thru
 typ (4) plcs

NOTE: Use McMaster Part No. 90248A086 (4) plcs

**DO NOT PAINT
 TOP AND BOTTOM
 SURFACES**

- NOTES: UNLESS OTHERWISE SPECIFIED
- REMOVE ALL BURRS AND BREAK SHARP EDGES TO A MAXIMUM OF .015
 - PART NUMBER (DRAWING NO., DASH NO., REVISION NO.) TO BE CLEARLY MARKED ON THE PART ITSELF
 - PAINT:
 ALL VISIBLE SURFACES
 MEDIUM BLUE SHERWIN WILLIAMS (POLANE (R) T-PLUS POLYURETHANE ENAMEL) #SW-F63TX-L-2822-5864
 PRIME WITH SHERWIN WILLIAMS INDUSTRIAL WASH PRIMER P60G2
 "OXI SOLV RUST INHIBITOR" TO BE APPLIED PER MFG. INSTRUCTIONS TO ALL UNPAINTED SURFACES.
 BOTH TAPPED AND THRU HOLES WILL BE PLUGGED DURING APPLICATION.

\parallel .005 A

Use 1" plate stock or equivalent

A \square .005

UNLESS OTHERWISE SPECIFIED:		NAME	DATE	LIGO CALIFORNIA INSTITUTE OF TECHNOLOGY MASSACHUSETTS INSTITUTE OF TECHNOLOGY	
DIMENSIONS ARE IN INCHES		DRAWN	OSPJELD	10/15/03	SYSTEM
TOLERANCES: .XX±: .02 .XXX±: .005 ANGULAR: ±1 DEG		CHECKED	OSPJELD	02/09/04	SUB-SYSTEM
MATERIAL		COMMENTS:		NEXT ASSY	
1018 CRS				PRE-ISOLATOR ASSEMBLY	
FINISH				PART NAME	
RMS 128				HAM ATTACH. PLATE LEFT	
		SIZE	DWG. NO.	REV	
		B	D030693	B	
		SCALE: 1:1		SHEET 1 OF 1	