

8

7

6

5

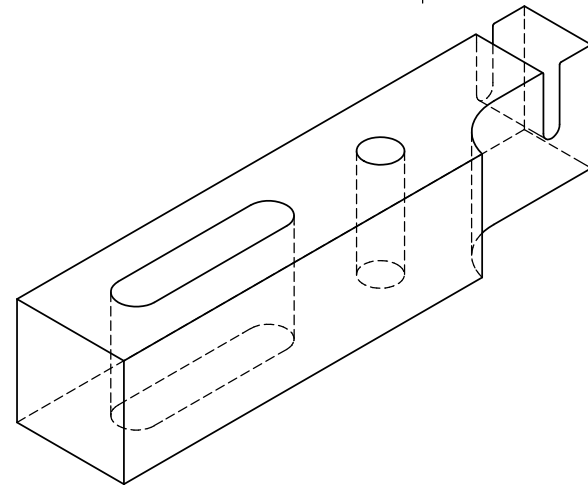
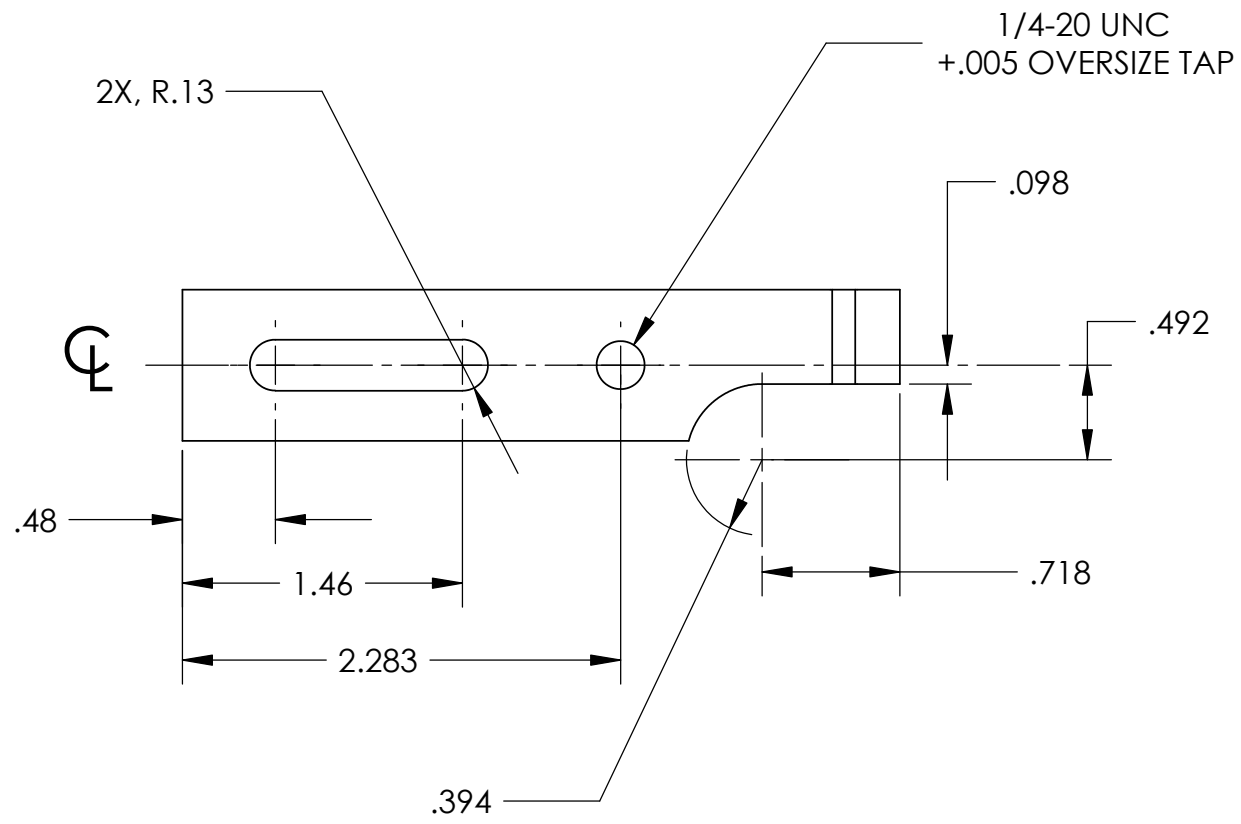
4

3

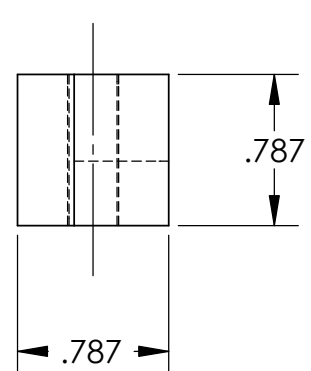
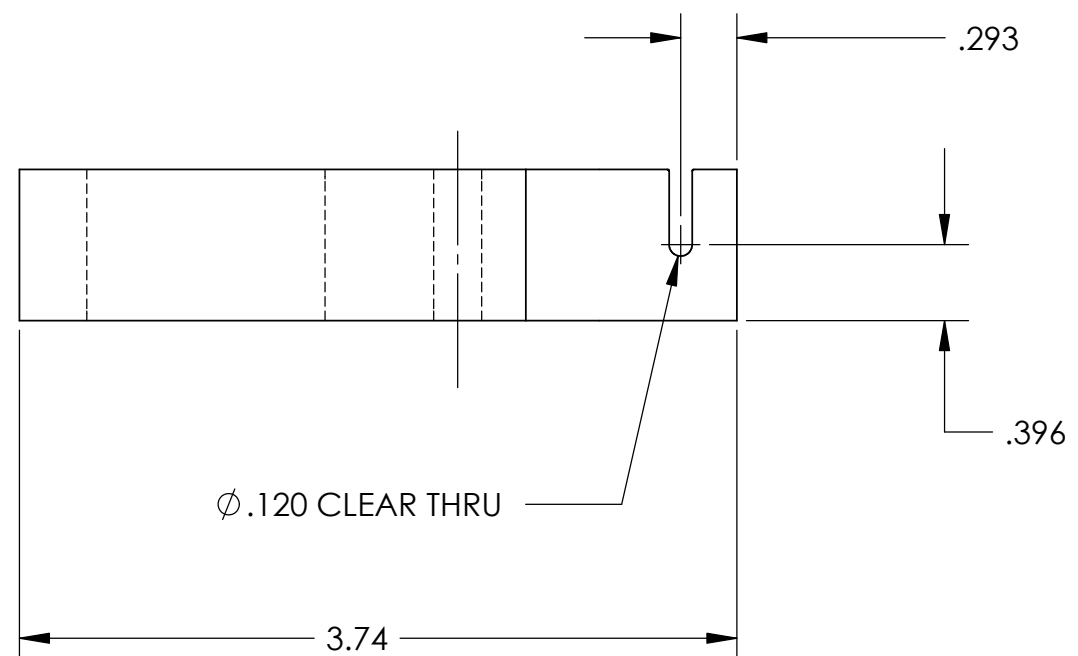
2



1

REV.	DATE	DCN#	DRAWING TREE
A	24 JUNE 2004	E040303-00	



D030264_DamperArm.step



MANUFACTURING/ASSEMBLY NOTES		MATERIAL		PARTS LIST	
1. REMOVE ALL SHARP EDGES R.02 MIN		6061-T6-Al		 CALIFORNIA INSTITUTE OF TECHNOLOGY  INSTITUTE FOR GRAVITATIONAL RESEARCH MASSACHUSETTS INSTITUTE OF TECHNOLOGY UNIVERSITY OF GLASGOW	
2. ALL MACHINING FLUIDS SHALL BE WATER SOLUBLE AND FREE OF SULPHUR, CHLORINE AND SILICONE		FINISH: NONE		SYSTEM ADVANCED LIGO	
		UNLESS OTHERWISE SPECIFIED:		SUB-SYSTEM SUS	
		DIMENSIONS ARE IN INCHES		NEXT ASSY Blade Damper	
		GENERAL TOLERANCES:		PART NAME Damper Arm	
		.XX ±:0.01		SIZE DWG. NO.	
		.XXX ±:0.005		B D030264	
		ANGULAR: ±0.5°		REV A	
		DRAWN RAJ(Gla) 03/03		SCALE: NTS	
		CHECKED MPL(Gla) 03/03		SHEET 1 OF 1	

7

6

5

4

3

2

1