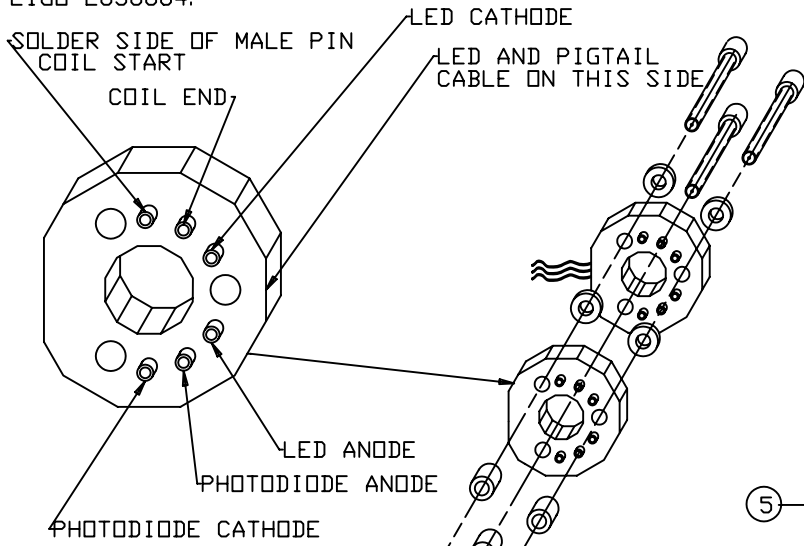
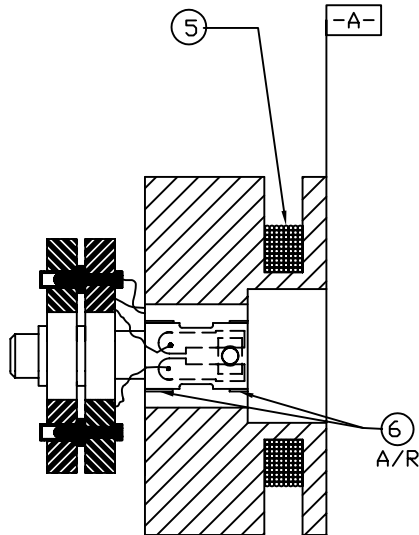


NOTES: UNLESS OTHERWISE SPECIFIED:
 1. ASSEMBLY SPECIFICATIONS DETAILED
 IN LIGO-E030084.

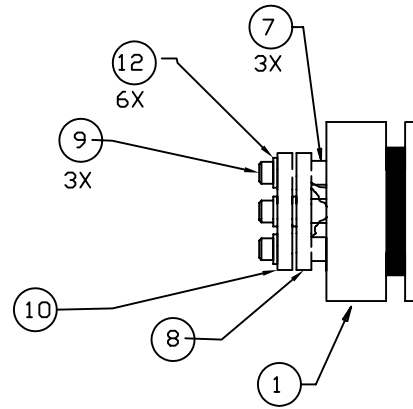
REV	DATE	DRAWN BY	CHECKED	DC	DCN/DESCRIPTION OF CHANGE
A	JUL 04	J. ROMIE			E040303/INITIAL RELEASE



SCALE 2: 1



SECTION A-A
 SCALE 2: 1



QTY	REQD	PART OR IDENTIFYING NO	NON-CONFORMANCE OR DESCRIPTION	MATERIAL SPECIFICATION	ITEM NO
6		95630A234	#4 FLAT WASHER, MCMASTER CARR P/N	TEFLON	12
1		D000209	PHOTODIODE OPTICAL FILTER		11
1		D990675	SENSOR/ACTUATOR PIGTAIL, LONG		10
3		C-410-A	4-40 x 5/8 SHCS, UC COMPONENTS P/N	VENTED SILVER/SST	9
1		D970073	SENSOR/ACTUATOR PIN PLATE		8
3		D030108	TEFLON OSEM SPACER	PFA 440HP TEFLON	7
A/R			AREMCO CERAMASEAL 571		6
A/R		32 QML	KAPTON WIRE, MWS INDUSTRIES P/N	COPPER WIRE, 32 AWG	5
1		D030107	CIRCUIT BOARD ASSY, HYBRID, LED		4
1		D030106	CIRCUIT BOARD ASSY, HYBRID, PD		3
A/R			AREMCO CERAMABOND 813-A		2
1		D020188	COIL FORMER		1

UNLESS OTHERWISE SPECIFIED DIMENSIONS ARE IN IN CHM TOLERANCES ARE:		APPROVALS		DATE	LIGO CALIFORNIA INSTITUTE OF TECHNOLOGY MASSACHUSETTS INSTITUTE OF TECHNOLOGY	
FRACTIONS	DECIMALS	DESIGNER	CHECKED	2/03	TITLE	REV
N/A		J. Hazel Romie			HYBRID OSEM ASSEMBLY	A
DO NOT SCALE DRAWING					SIZE	
MATERIAL N/A					B	DWG NO. D030105
FINISH N/A						
SCALE NONE				FILENAME	/home/dcc/docs/D030105.pdf	SHEET 1 OF 1