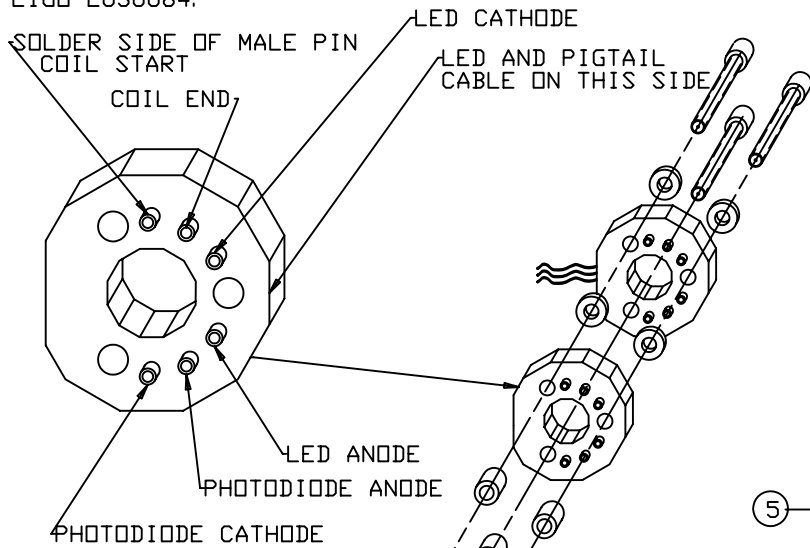
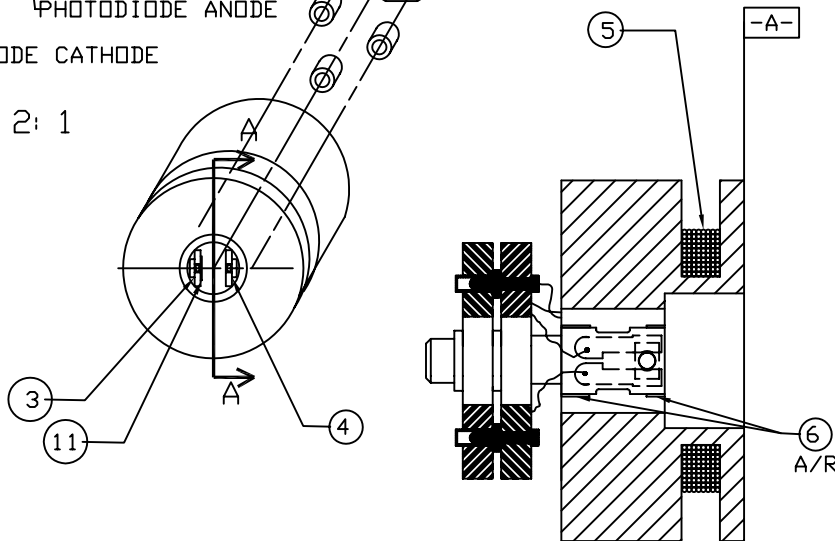


NOTES: UNLESS OTHERWISE SPECIFIED:  
 1. ASSEMBLY SPECIFICATIONS DETAILED  
 IN LIGO-E030084.

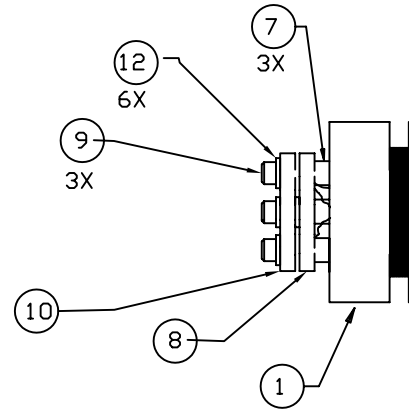
REV	DATE	DRAWN BY	CHECKED	DEC	REV/DESCRIPTION OF CHANGE



SCALE 2: 1



SECTION A-A  
 SCALE 2: 1



QTY REQD	PART OR IDENTIFYING NO	NOMENCLATURE OR DESCRIPTION	MATERIAL SPECIFICATION	ITEM NO
6	95630A234	#4 FLAT WASHER, MCMASTER CARR P/N	TEFLON	12
1	D000209	PHOTODIODE OPTICAL FILTER		11
1	D990675	SENSOR/ACTUATOR PIGTAIL, LONG		10
3	C-410-A	4-40 x 5/8 SHCS, UC COMPONENTS P/N	VENTED SILVER/SST	9
1	D970073	SENSOR/ACTUATOR PIN PLATE		8
3	D030108	TEFLON OSEM SPACER	PFA 440HP TEFLON	7
A/R		AREMCO CERAMASEAL 571		6
A/R	32 QML	KAPTON WIRE, MWS INDUSTRIES P/N	COPPER WIRE, 32 AWG	5
1	D030107	CIRCUIT BOARD ASSY, HYBRID, LED		4
1	D030106	CIRCUIT BOARD ASSY, HYBRID, PD		3
A/R		AREMCO CERAMABOND 813-A		2
1	D020188	COIL FORMER		1

UNLESS OTHERWISE SPECIFIED TOLERANCES ARE IN INCHES		APPROVALS		DATE	LIGO CALIFORNIA INSTITUTE OF TECHNOLOGY MASSACHUSETTS INSTITUTE OF TECHNOLOGY	
FRACTIONS	DECIMALS	DRAWN	J. Hazel Romie	2/03	TITLE	
N/A		CHECKED			HYBRID OSEM ASSEMBLY	
DO NOT SCALE DRAWING					SIZE	DWG NO.
MATERIAL	N/A			B		D030105
FINISH	N/A				REV	02
SCALE	NONE	FILENAME	/home/dcc/docs/D030105.pdf		SHEET	1 OF 1